

Vendor: VMware

Exam Code: VCPVCD510

Exam Name: VMware Certified Professional 5 - IaaS
Exam

Version: Demo

QUESTION NO: 1

An administrator is auditing IP address use in a specific Organizational Network.

Where will the administrator find this information?

- A. The administrator can run a Global IP Allocation report
- B. The information can be located in the IP Allocation properties for the specific Organizational Network
- C. The information can be located in the System Properties of the Organizational Network
- D. The administrator can run an IP Allocation report for the specific Organizational Network

Answer: B

Explanation:

QUESTION NO: 2

An administrator needs a list of all hosts and statuses across all Provider vDCs in a vCloud Director environment. Where will the administrator find this information?

- A. In the Hosts section of the vSphere Resources pane of the System tab
- B. In the Host Status report of vCenter Chargeback
- C. In the Hosts section of the vSphere Resources pane of the Administration tab
- D. In the Host settings section of each organization

Answer: A

Explanation:

QUESTION NO: 3

An administrator is updating the system SMTP server settings.

Where will the administrator change this setting?

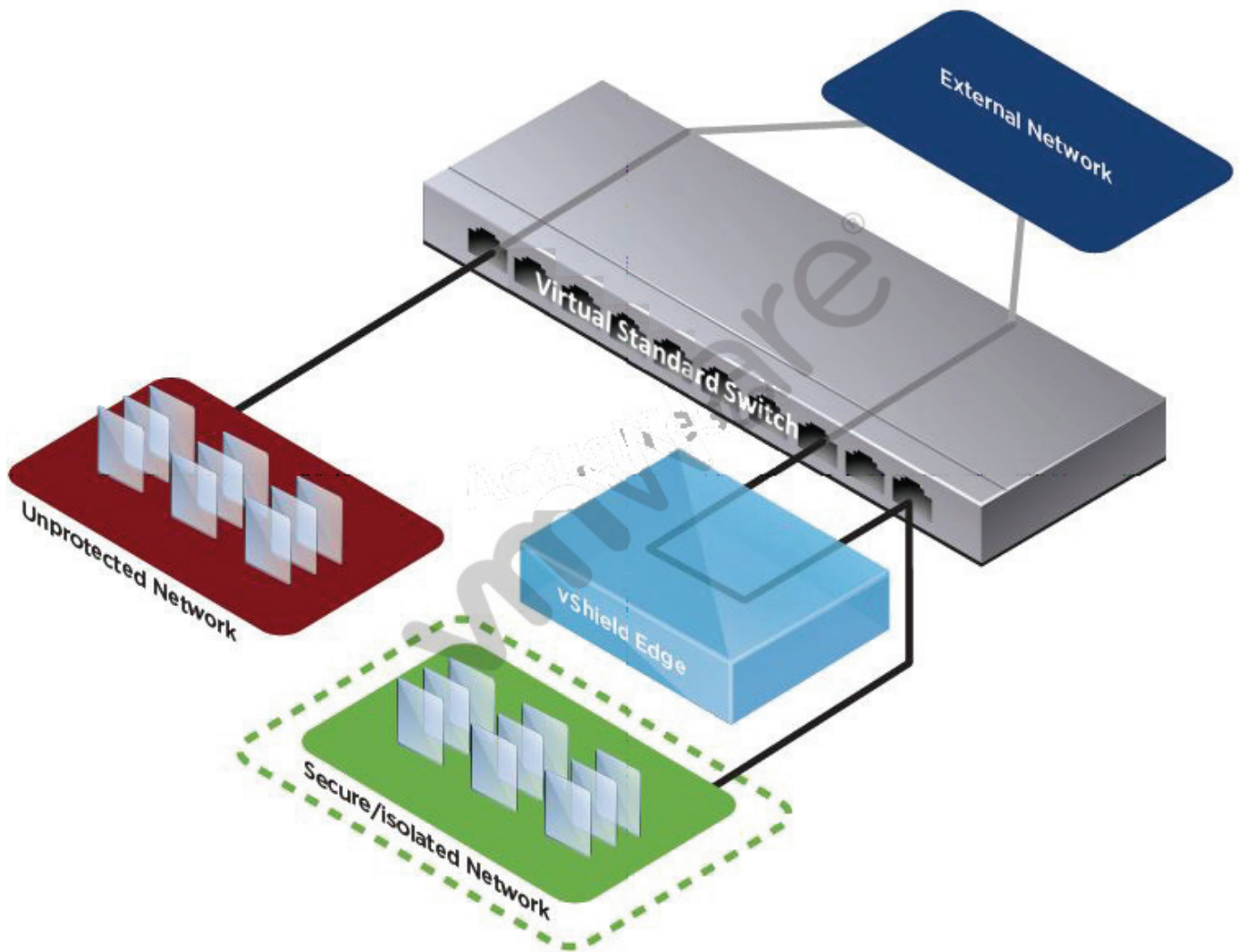
- A. The Email Server settings in the Alerts section of the Administration page.
- B. The Email section in the System settings section of the Administration page.
- C. The Email Server settings in the Servers section of the Administration page.
- D. The Email Services configuration file on each vCD Cell.

Answer: B

Explanation:

QUESTION NO: 4

Click the Exhibit button.



An administrator needs to configure a vSphere environment to support a vCloud network architecture providing for automatic provisioning of network pools.

Which step must be taken in order to successfully configure Port Group Isolation?

- A. vShield Edge component must be added between the External Network and the virtual switch.
- B. VLAN/PVLAN configuration information must be added to the configuration.
- C. A vShield Edge component must be added between the Unprotected Network and the virtual switch.
- D. The Virtual Standard Switch must be replaced with a vSphere Distributed Switch.

Answer: D

QUESTION NO: 5

Where must an administrator place sysprep files in order for Guest OS Customizations to work on all supported versions of Windows?

- A. On the VM during vApp creation.
- B. On the vCD management cluster.
- C. In a specific location on all vCD Cells.
- D. In a specific location on the vCenter Servers.

Answer: C

Explanation:

QUESTION NO: 6

An administrator attempts to delete the network named Internet but receives an error.

What is a possible reason for the error?

- A. The network named Internet is backed by a port group on a vSphere Standard Switch.
- B. The vShield Edge appliance on the external network is powered off.
- C. The administrator needs to be an Organization Administrator.
- D. The network is still in use by an Organization.

Answer: D

Explanation:

QUESTION NO: 7

A vCloud Service Provider is attempting to monitor a vCloud implementation. The service is unavailable from the Organization network. Firewall rules on the vShield Edge device are set correctly. Why would the service be unavailable?

- A. IP Masquerading rules are not set.
- B. NAT is not automatically assigned.
- C. Static routing is not enabled.
- D. DHCP is not scoped properly.

Answer: A

Explanation:

QUESTION NO: 8

Which core vSphere feature can be used to improve the availability of vShield components?

- A. VM Monitoring
- B. vCenter Server Heartbeat
- C. Fault Tolerance
- D. HA Monitoring

Answer: A

Explanation:

QUESTION NO: 9

Due to diminishing capacity, an ESXi host is added to a cluster that supports a cloud environment. A vCloud Administrator notices that newly created VMs created through vCD are not utilizing the host resource. What is the reason for this?

- A. An inventory synchronization was not performed after the new host was added to the cluster.
- B. The host was not manually added to an organizational vDC before it was utilized.
- C. The host was not prepared to be part of the vCD environment.
- D. DRS was not enabled on the cluster providing resources to the vCD environment.

Answer: C

Explanation:

QUESTION NO: 10

A virtual machine in the Finance Organization must communicate with a virtual machine in the Sales Organization. The virtual machine in the Finance Organization has been defined with an external IP address. A static route has been created on the Finance Organization Network.

For communication to successfully occur between these two virtual machines, how many vShield Edge devices and how many firewall rules would need to be deployed (Choose Two)?

- A. 3 vShield Edge devices
- B. 2 vShield Edge devices
- C. 3 Firewall rules

D. 2 Firewall rules

Answer: A,B

Explanation:

QUESTION NO: 11

An administrator needs to store a multi-VM vApp in a vCloud so that others can easily deploy.

Where should the administrator store this item?

- A. In the Content Management System.
- B. In an organization catalog.
- C. On the vCD cell's local storage.
- D. On the primary data store.

Answer: B

Explanation:

QUESTION NO: 12

An administrator needs to configure a vShield Edge device that allows for incoming pings.

Which two steps would allow incoming pings? (Choose two.)

- A. The rule must have the Log network traffic for firewall rule setting checked.
- B. A rule must be created that allows for outgoing traffic and the UDP protocol.
- C. The default rule must be set to Disable.
- D. A rule must be created that allows for incoming traffic and the ICMP protocol.

Answer: C,D

Explanation:

QUESTION NO: 13

A virtual machine in the QA Organization must communicate with a virtual machine in the Research Organization. When creating a Static Route, which two pieces of information are required (Choose Two)?

- A. The Classless Interdomain Routing (CIDR) address
- B. The address of the next hop
- C. The subnet address of the target network
- D. The address of the target vShield device

Answer: A,B

Explanation:

QUESTION NO: 14

A vApp is deployed within an internal vApp Network. One VM in the vApp is configured to use NAT. The vApp is converted to a vApp template and deployed to the Organization. After deploying the vApp, network connectivity does not function as expected.

What explains this behavior?

- A. vApps using NAT require the use of Network Pools.
- B. The vApp should be connected to an External Direct network.
- C. All virtual machines in a vApp must use the same NAT settings.
- D. The vApp NAT configuration settings are lost when a vApp is deployed.

Answer: D

Explanation:

QUESTION NO: 15

A user has been assigned a single external IP address that connects to the Internet. The user has a vApp containing 4 VMs deployed in the Organization VDC. Which technology will allow a user's VMs to accept incoming traffic the Internet?

- A. Firewall Rules
- B. Port Forwarding
- C. IP Translation
- D. 1:1 NAT

Answer: B

Explanation:

QUESTION NO: 16

An administrator receives the error:

Unable to create vShield Edge VM

while using the Reset Network function on vApp or Organizational Networks. What is the cause of this error?

- A. The vApp or Organizational Network name is too long.
- B. The vShield Edge VM resource pool is out of resources.
- C. The vShield Manager appliance is not registered to vCD.
- D. The vShield Manager appliance is not registered to vCenter.

Answer: A

Explanation:

QUESTION NO: 17

An administrator needs to allow traffic between two different networks within the same Organization. Traffic on the internal network cannot be compromised.

Where must static routes be configured to enable this functionality?

- A. On the source Internal network to the target External Routed network
- B. On the source External Direct network to the target network
- C. On the source Internal network to the target External Direct network
- D. On the source External Routed network to the target network

Answer: D

Explanation:

QUESTION NO: 18

An administrator is unable to connect to the Internet from within the cloud. The administrator suspects the firewall setting is causing the issue.

Which troubleshooting step should the user take first?

- A. Open Configure Services for the External Network
- B. Open Configure Services for the External Routed Organizational network

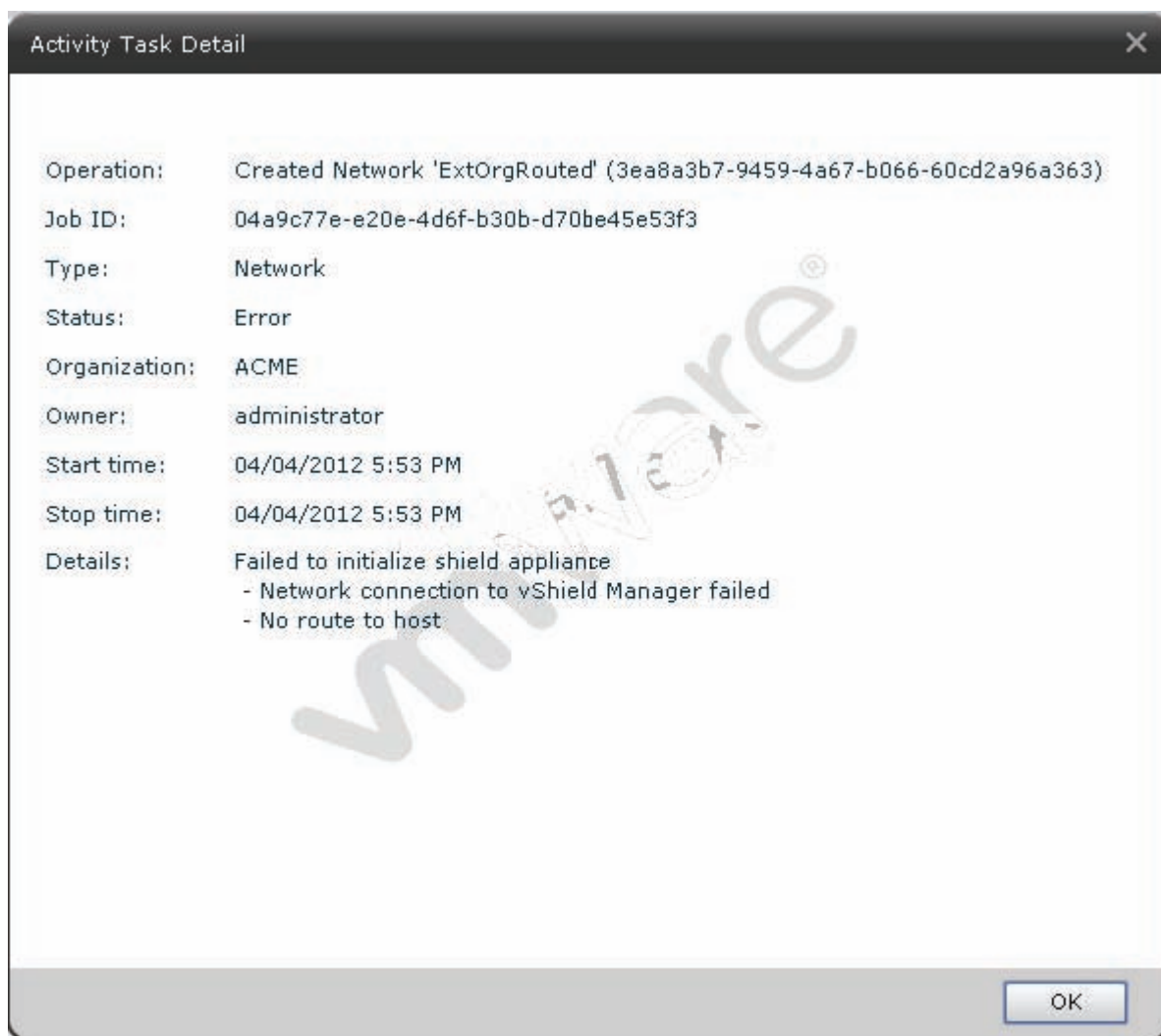
- C. Open Configure Services for the vShield Edge device
- D. Open Configure Services for the External Direct Organizational network

Answer: B

Explanation:

QUESTION NO: 19

Click the Exhibit button.



ACME has a Web Server virtual machine with an IP Address of 192.168.0.27. It is not responding to incoming customer requests on either internal or external networks. The network is an External Routed network with the firewall rules displayed in the exhibit.

Which configuration change would correct this behavior?

- A. Enable the Outgoing Web Services rule.
- B. Enable the ACME External Internet rule
- C. Change the IP Address of the Outgoing Web Services rule to 192.168.0.17

D. Delete the Outgoing Web Services rule

Answer: A

Explanation:

QUESTION NO: 20

An administrator has scheduled a report to run at 8 PM nightly and has configured a number of recipients to receive the report. After the report runs, the administrator discovers that a link to the report was sent to the recipients, not the report itself. Why did this occur?

- A. vCenter Chargeback cannot support attachments via email.**
- B. The report size was larger than the size limit configured for the SMTP server.**
- C. vCenter Chargeback was configured to send links instead of attachments.**
- D. The SMTP server was configured not to accept attachments.**

Answer: B

Explanation:

QUESTION NO: 21

The VM Instance feature in vCenter Chargeback allows the hard bundling of which two resource types? (Choose two.)

- A. CPU**
- B. Memory**
- C. Storage**
- D. vCPU**

Answer: B,D

Explanation:

QUESTION NO: 22

Which two actions should an Organization Administrator take to deploy three vApps that communicate with each other? (Choose two.)

- A. Connect all vApps to an existing Organization network.**

- B. Connect all vApps to an external network with external IP addresses.
- C. Connect all vApps to a new Organization network.
- D. Connect each vApp to an External Routed vApp network.

Answer: A,C

Explanation:

QUESTION NO: 23

A vApp containing four VMs is connected to an External Routed Organization network.

Which two ways could the IP mode be configured to allow the VMs to get IP addresses automatically mapped externally? (Choose two.)

- A. Static - Manual
- B. DHCP
- C. DHCP - Static
- D. Static - IP pool

Answer: A,D

Explanation:

QUESTION NO: 24

What are two requirements for setting up a VPN tunnel between two Organization Networks in the same organization? (Choose two.)

- A. Both Organization Networks must be External Routed networks.
- B. Both Organization Networks must have static routes configured between them.
- C. Both Organization Networks must be connected to the same external provider network.
- D. Both Organization Networks must have firewalls disabled in the vShield Edge device.

Answer: A,C

Explanation:

QUESTION NO: 25

A user is assigned a role with Create, Read, Update, and Delete access to the Cost Model resource type. Which two dependent resources are assigned as well? (Choose two.)

- A. Cost Template
- B. Billing Policy
- C. Report
- D. Fixed Cost

Answer: B,D

Explanation:

QUESTION NO: 26

An administrator must create an Organization with virtual machines that need to be provisioned rapidly, on demand, and allow for over allocation. Which two storage features of vCloud Director Organization vDCs will allow this? (Choose two.)

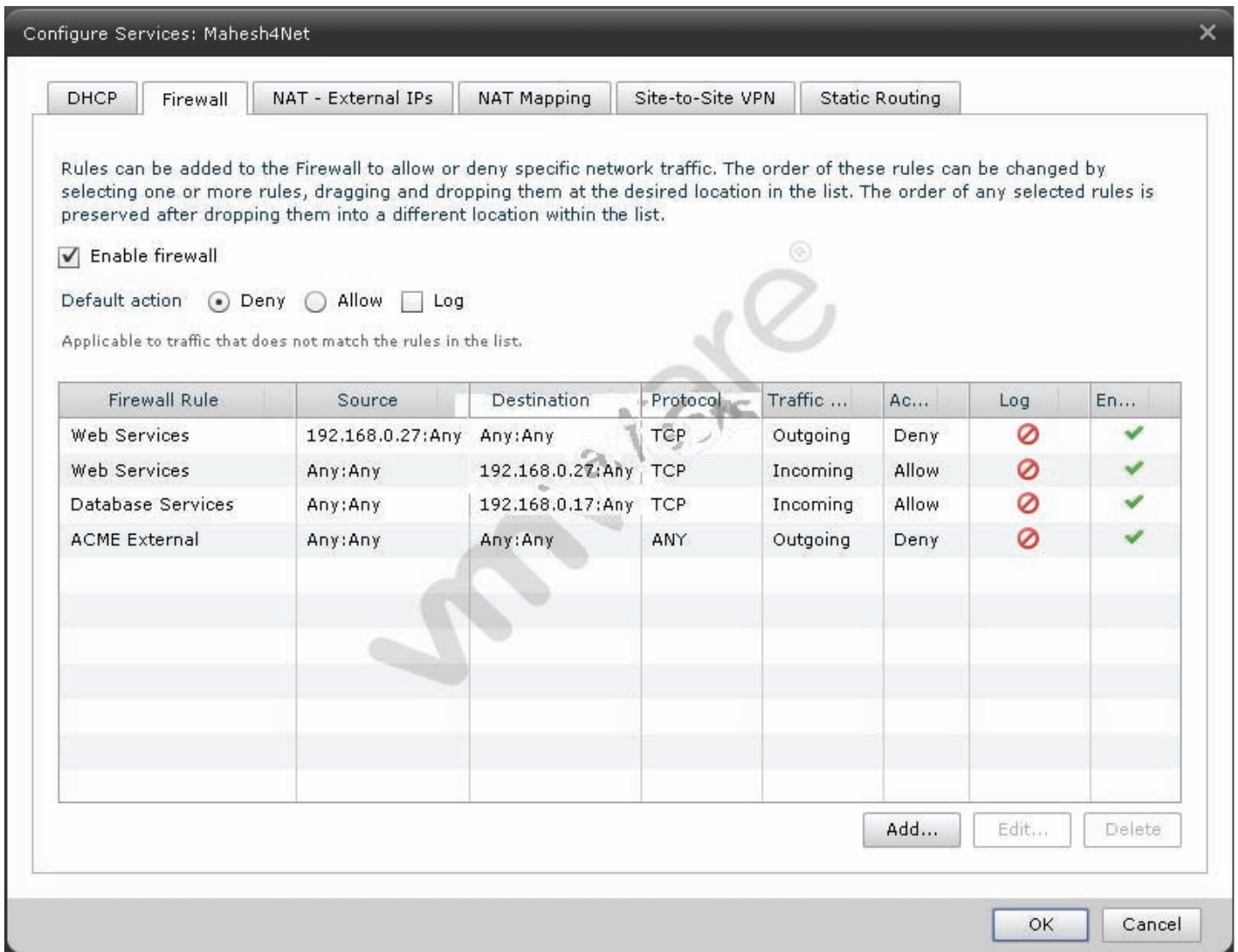
- A. Fast Provisioning
- B. Shadow Provisioning
- C. Thin Provisioning
- D. Thick Provisioning

Answer: A,C

Explanation:

QUESTION NO: 27

Click the Exhibit button.



ACME has a virtual machine with an IP address of 192.168.0.51. It is running an SMTP mail service and is unable to communicate from the assigned network. The network is an External Routed network with the firewall rules displayed in the exhibit.

Which configuration change would correct this behavior?

- A. Set the Destination IP address to 192.168.0.51.
- B. Enable the Web Services Internal rule.
- C. Disable the ACME External Internet rule to an incoming rule.
- D. Set the ACME External Internet rule to allow.

Answer: D

Explanation:

QUESTION NO: 28

How can an administrator make an external IP mapping persistent?

- A. Choose the radio button in the vShield Edge device's External Static IP table.
- B. Check the box in the vShield Edge device's NAT – External IP tab.

- C. Choose Re-use IP from the drop down menu in the vApp network tab.
- D. Check the Always use assigned IP addresses box for the specific vApp.

Answer: D

Explanation:

QUESTION NO: 29

A vApp containing multiple VMs has three vApp networks. The vApp is not connected to an Organization network. The VMs on each vApp network can communicate with each other but not across vApp networks. The administrator cannot add additional networks but requires communication across vApp networks. Which method should the administrator use to identify the issue?

- A. Use IP Assignments to verify each IP address.
- B. Use a trace route tool to map the hops between the vApp networks.
- C. Use the vApp diagram tool to verify the network topology.
- D. Use a network sniffer to determine whether traffic is being received from all vApp networks.

Answer: C

Explanation:

QUESTION NO: 30

A user needs to prevent a vShield Edge device from automatically mapping an external IP address to an internal IP address. Which IP Mode should the vApp author choose when connecting virtual network adapters to vApp networks?

- A. Static-Manual
- B. Static-IP
- C. DHCP
- D. Broadcast

Answer: C

Explanation:

QUESTION NO: 31

Which service is available for an Internal Organization Network?

- A. Firewall
- B. NAT
- C. DHCP
- D. VPN

Answer: C

Explanation:

QUESTION NO: 32

A user has a vApp that requires controlled access to specific services.

What needs to be deployed in the user's environment in order to fulfill this requirement?

- A. vShield Manager
- B. vShield Endpoint
- C. vShield App
- D. vShield Edge

Answer: D

Explanation:

QUESTION NO: 33

A user is troubleshooting networking connectivity and needs to enable logging.

How should the user accomplish this?

- A. Enable logging in Firewall Rule Editor.
- B. Enable VMs to send log info to syslog.
- C. Enable logging in Org Admin Syslog Setting.
- D. Enable logging in System Syslog Setting.

Answer: A

Explanation:

QUESTION NO: 34

A user needs to set up a VPN tunnel.

What is the minimum role that would allow a user to perform this operation?

- A. vApp Author
- B. vApp User
- C. System Administrator
- D. Organization Administrator

Answer: D

Explanation:

QUESTION NO: 35

A user deploys 2 vApps. Each vApp has 2 VMs: VM-A1 and VM-A2 reside in vApp-A1; VM-B1 and VM-B2 reside in vApp-B1.

VM-A1 can ping VM-B1 and VM-B2 but not VM-A2.

VM-A2 can ping VM-B1 and VM-B2 but not VM-A1.

Why is this occurring?

- A. vShield Edge firewall is enabled to drop all incoming packets.
- B. Guest Operating Systems in VM-A1 and VM-A2 have firewall rules to block ping packets.
- C. vShield Edge firewall is enabled but configured to drop ping packets.
- D. Guest Operating Systems in VM-A1 and VM-A2 are running Anti-Virus software.

Answer: B

Explanation:

QUESTION NO: 36

A vApp is connected to an External Routed network. The vShield Edge is accidentally deleted from the vSphere and the vApp loses connectivity. How should the administrator restore connectivity?

- A. Reset the network.
- B. Reset the vApp.
- C. Redeploy the vApp.
- D. Redeploy the vShield Edge device.

Answer: A

Explanation:

QUESTION NO: 37

Click the Exhibit button.

Leases

Specify the maximum time that vApps and vApp templates can run and be stored in this organization's vDC(s).

vApp leases:

Maximum runtime lease: 7 Days *

How long vApps can run before they are automatically stopped.

Maximum storage lease: 90 Days *

How long stopped vApps are available before being automatically cleaned up.

Storage cleanup: Move to Expired Items

How long will VMs deployed in an organization with the indicated settings reside on storage?

- A. Until powered off
- B. Indefinitely
- C. Three months
- D. One week

Answer: B

Explanation:

QUESTION NO: 38

An administrator needs to provide network connectivity to an Organization while ensuring the traffic is not visible by any other Organization. What are two possible ways to accomplish this goal? (Choose two.)

- A. Provision an External Direct Organization Network backed by port groups.
- B. Provision an Isolated Organization Network backed by VLANs.
- C. Provision an Isolated Organization Network backed by port groups.
- D. Provision an External Routed Organization Network backed by VLANs.

Answer: B,C

Explanation:

QUESTION NO: 39

An organization administrator is attempting to restart a vApp that was shut down because its runtime lease expired. How should the administrator proceed?

- A. Renew the lease for the vApp.
- B. Move the vApp from the expired item pool.
- C. Renew the lease for the Organization.
- D. Redeploy the vApp from the template.

Answer: A

Explanation:

QUESTION NO: 40

An Organization has been configured with a storage and runtime lease of 1 week each.

Which two events will occur as a result? (Choose two.)

- A. A storage cleanup will be performed in 7 days.
- B. A storage cleanup will be performed in 14 days.
- C. The vApp will be shut down in 7 days.
- D. The vApp will be shut down in 14 days.

Answer: B,C

Explanation:

QUESTION NO: 41

Which two resources must be in place prior to creating a new Provider vDC? (Choose two.)

- A. vCloud External Network
- B. vCenter Datastore
- C. vCenter Resource Pool
- D. vShield Protection Group

Answer: B,C

Explanation:

QUESTION NO: 42

An administrator needs to perform maintenance on an ESXi host that is part of a vCloud Provider vDC. The maintenance will include a host reboot. The management team requires that service remain uninterrupted for all virtual machines in the vCloud environment.

Which two steps must the administrator take in order to accomplish this? (Choose two.)

- A. Disable the ESXi host.
- B. Clone VMs to another ESXi host.
- C. Place the ESXi host in Maintenance Mode.
- D. Migrate VMs to another ESXi host.

Answer: A,D

Explanation:

QUESTION NO: 43

The vSphere cluster supporting vCloud Director is running out of memory. Additional ESXi hosts have been added to the cluster in vCenter server but the memory situation has not improved. How can the administrator address the problem?

- A. Provision Hosts
- B. Prepare Hosts
- C. Rescan Hosts
- D. Refresh Hosts

Answer: B

Explanation:

QUESTION NO: 44

Where does the guarantee take place when configuring a Pay-As-You-Go Organization vDC and setting Memory resources guaranteed?

- A. The Provider vDC.
- B. The resource pool.

- C. The VM.
- D. The cluster.

Answer: C

Explanation:

QUESTION NO: 45

An administrator needs to restrict the amount of storage that a group of users is able to use.

Which vCloud Director construct will allow this?

- A. Provider vDC
- B. Organizational vDC
- C. Storage Allocation Wizard
- D. Datastore Configuration

Answer: B

Explanation:

QUESTION NO: 46

An administrator needs to create an Organization vDC with a specific CPU speed for all virtual machines within an organization. Which Organization vDC pool will allow this?

- A. Allocation Pool
- B. Reservation Pool
- C. User adjustable Pool
- D. Pay-As-You-Go Pool

Answer: D

Explanation:

QUESTION NO: 47

An administrator must create an Organization with virtual machines that need to be provisioned on demand and allow for over allocation. Management has indicated that the VMs should also be independent of each other. Which storage feature of Organization vDCs will allow this?

- A. Fast Provisioning
- B. Thick Provisioning
- C. Rapid Provisioning
- D. Thin Provisioning

Answer: D

Explanation:

QUESTION NO: 48

An administrator needs to create an Organization vDC that allows only system administrators to configure the amount of over commitment of resources. Which Organization vDC pool will allow this?

- A. Allocation Pool
- B. Pay-as-you-go Pool
- C. User adjustable Pool
- D. Reservation Pool

Answer: A

Explanation:

QUESTION NO: 49

An administrator needs to populate the catalog with a vApp.

What are two possible sources? (Choose two.)

- A. An existing deployed vCloud vApp which can be published as a vApp Template.
- B. An existing deployed vSphere vApp which can be published as a vApp Template.
- C. An existing vSphere Template which can be converted to a vApp Template.
- D. An existing powered off workload which can be copied into a new vApp Template.

Answer: A,D

Explanation:

QUESTION NO: 50

A user in a vCloud needs to build a new virtual machine configuration from installation media

rather than an existing template. What must the user have access to in order to accomplish this?

- A. Installation media in the form of an OVF readily available.
- B. A CD or DVD of the installation media readily available.
- C. Installation media published to an accessible Organization Catalog.
- D. A blank template with the installation media already attached.

Answer: C

Explanation:

QUESTION NO: 51

An author needs to create an item in the catalog that will be marked as locked.

Which two actions must the author take in order for this configuration to be successful? (Choose two.)

- A. Ensure that the vApp is deployed with no networking attached.
- B. Ensure that the vApp is deployed only to an internal Organizational Network.
- C. Ensure that the vApp is fenced if it is attached to an Organizational Network.
- D. Ensure that the vApp is deployed only to a vApp Network.

Answer: C,D

Explanation:

QUESTION NO: 52

Using a vSphere 5.x vCenter Server with vCloud Director provides which added benefit?

- A. vCloud Director gains visibility of remote vCD cells.
- B. vShield Manager provides additional functionality.
- C. vCloud Director managed VMs are protected from accidental modification.
- D. vCloud Director and vCenter Server communication is encrypted.

Answer: C

Explanation:

QUESTION NO: 53

A new vShield Manager is installed for use with an existing vCloud Director controlled vCenter Server. Problems arise that seem to indicate that vSM is not properly managing vCloud Director networks.

What action will resolve these issues?

- A. Change the vShield Manager settings associated with the vCenter Server properties in the vCD GUI.
- B. Change the vShield Manager IP settings in vCenter server.
- C. Change the vCenter Server IP settings in the vShield GUI.
- D. Add the new vShield Manager to the list of associated vShield Managers in the vCD GUI.

Answer: A

Explanation:

QUESTION NO: 54

An administrator needs to remove an existing external network and redeploy the resources. Selecting Delete Network fails. What could cause this issue?

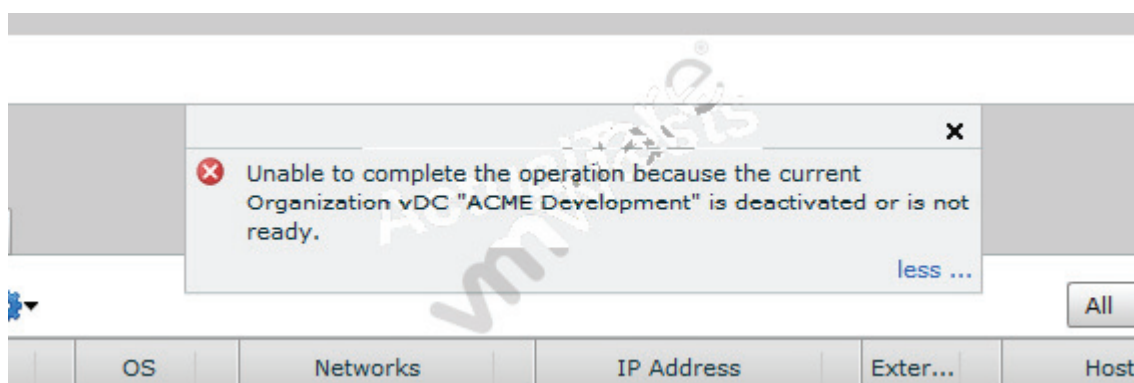
- A. All Organization Networks that rely on the network must be deleted first.
- B. The external network specification must be deleted first.
- C. All Organization vDCs that rely on the network must be deleted first.
- D. All Provider vDCs that rely on the network must be deleted first.

Answer: A

Explanation:

QUESTION NO: 55

Click the Exhibit button.



An administrator is attempting to determine why Organization administrators trying to power on existing virtual machines in an organization are getting the error displayed in the exhibit.

What are two possible causes of this error? (Choose two.)

- A. The Organization vDC containing the vApp is disabled.
- B. The Provider vDC containing the Organization vDC is disabled.
- C. The Resource pool containing the vApp is disabled.
- D. The Hosts on which the virtual machines reside are disabled.

Answer: A,B

Explanation:

QUESTION NO: 56

An administrator learns that vApps within an organization are unable to access the Internet even though they are able to ping vApps from other organizations using the same external network. Both organizations are configured with a direct connected external network. How should the administrator respond to this situation?

- A. Troubleshoot the physical network.
- B. Troubleshoot the vApp network.
- C. Add additional networks to the corresponding network pool.
- D. Add additional uplinks to the DVS providing the external network.

Answer: A

Explanation:

QUESTION NO: 57

An administrator chooses the Network Reset option on an Internal Organization Network.

What effect will this operation have within this organization?

- A. vApps will lose network connectivity.
- B. vApps will be unable to request IP addresses.
- C. vApps will have their virtual NICs removed and re-created.
- D. vApps will be redeployed with a new IP address.

Answer: B

Explanation:

QUESTION NO: 58

An existing network isolation-backed network pool has been fully provisioned (100 out of 100 networks have been deployed). How can an administrator provide greater capacity for a fully provisioned vApp network?

- A.** Edit the properties of the vSphere Distributed Switch to increase the number of configured PVLANS.
- B.** Remove any configured vApp networks and re-create a larger network pool.
- C.** Increase the number of vCloud isolated networks in the network pool properties.
- D.** Create a new network pool and attach it to the organization VDC.

Answer: C

Explanation:

QUESTION NO: 59

An administrator needs to configure network pools that will require the smallest amount of administrative effort in order to provision additional networks. Which two network pool types meet this requirement? (Choose two.)

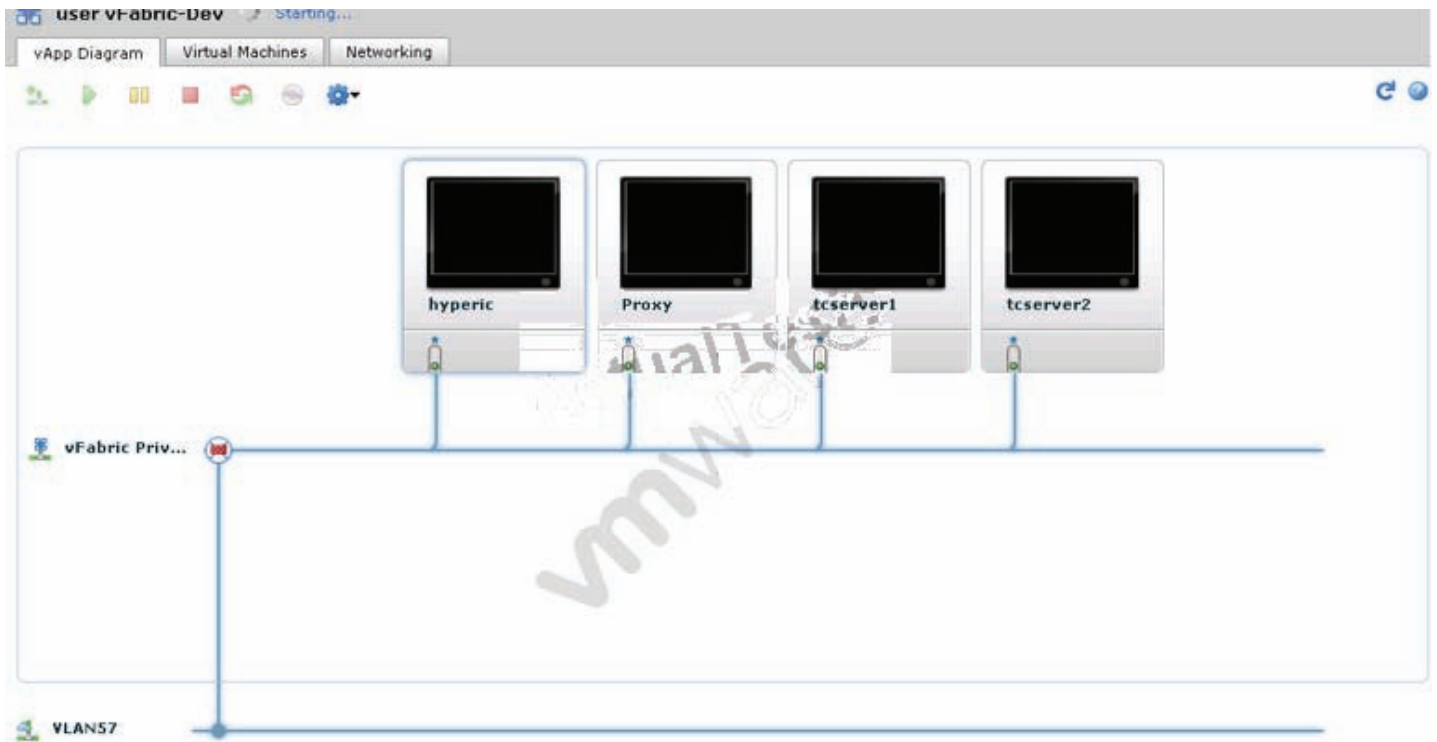
- A.** Port group-backed
- B.** vShield Manager-backed
- C.** VLAN-backed
- D.** Network isolation-backed

Answer: C,D

Explanation:

QUESTION NO: 60

Click the Exhibit button.



An administrator has configured a vApp containing a proxy server as shown in the exhibit. The proxy server is the only VM in the vApp with an external IP address and is configured to run a SSH service.

Users find they are unable to login to they proxy server using SSH. Which of the following would explain the cause of the issue?

- A. The vApp network is an External Routed Network.
- B. The vShield Edge device is configured for port forwarding.
- C. There is no static route to the proxy.
- D. The vShield Edge is set to default.

Answer: D

Explanation:

QUESTION NO: 61

An administrator finds that fixed costs associated with a cost model are excluded from vCloud hierarchy reports. What are two possible causes of this issue? (Choose two.)

- A. Show fixed cost in report was not enabled for the selected report.
- B. The fixed costs were not added to the billing policy.
- C. The fixed costs were not added to the cost model.
- D. Fixed costs are not applied to directly to a vCenter Chargeback hierarchy.

Answer: A,B

Explanation:

QUESTION NO: 62

Where does an administrator configure the syslog server address in the vCloud Director interface?

- A. Manage and Monitor Logs
- B. Organizational Administration settings
- C. Provider vDC properties
- D. Cloud Administration settings

Answer: D

Explanation:

QUESTION NO: 63

An administrator needs to enable the installation of software following the deployment of a vApp Template. Which two mechanisms can accomplish this? (Choose two.)

- A. Guest OS Customizations, a VM within a vApp can be instructed to join a particular Windows Domain.
- B. vApp Template properties, all VMs can be forced to install specific software upon deployment.
- C. Guest OS Customizations, a VM within a vApp can be instructed to install specific software upon deployment.
- D. Guest OS Customizations, a VM within a vApp can execute a script upon deployment.

Answer: A,D

Explanation:

QUESTION NO: 64

A vShield Edge device is deployed to the vSphere environment for which network type?

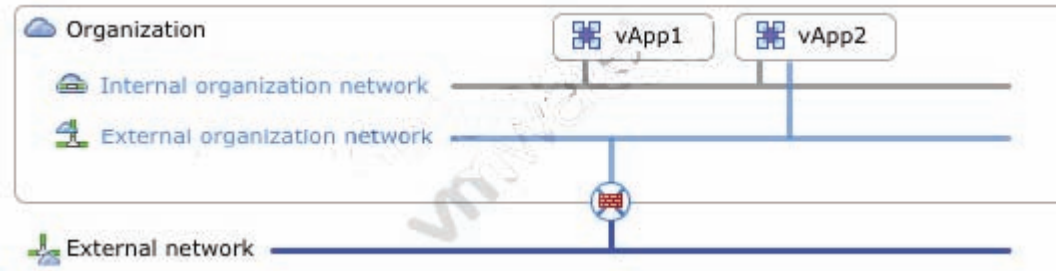
- A. External Routed
- B. vApp
- C. Organization
- D. External Direct

Answer: A

Explanation:

QUESTION NO: 65

Click the Exhibit button.



Which external organization network type is being created in the Organization Network Creation Wizard?

- A. External Direct
- B. External Routed
- C. vShield App
- D. vShield Edge

Answer: B

Explanation:

QUESTION NO: 66

Which two steps are part of transferring a virtual machine from one cloud to another using vCloud Connector? (Choose two.)

- A. The VM is transferred from source to destination via multipart using checkpoint-restart.
- B. A VIM API request is used to tell vCenter to export the VM.
- C. A VIM API request is used at the destination to tell vCD to import the VM.
- D. The VM is transferred from the source datastore directly to the destination vCD transfer storage.

Answer: A,B

Explanation:

QUESTION NO: 67

System Administrators can be added to vCloud Director in which two ways? (Choose two.)

- A. Create a System Administrator account in vCloud Director.
- B. Import LDAP users or groups by a System Administrator.
- C. Assign the System Administrator role to the vCenter Administrator.
- D. Copy an existing System Administrator account to inherit Administrator rights from an ESXi host.

Answer: A,B

Explanation:

QUESTION NO: 68

Two Organizations share the same range of internal IP addresses for their deployed vApps.

Which Organization Network type is used by each Organization?

- A. Internal
- B. External NAT-routed
- C. VLAN-backed
- D. External Direct connected

Answer: B

Explanation:

QUESTION NO: 69

A vCloud administrator needs to create a network pool that will service 50 vApp networks. The network administrator requires that all vApp network traffic resides on a single VLAN.

Which network pool type will meet these requirements?

- A. VLAN-backed
- B. Port group-backed
- C. Network isolation-backed
- D. vShield Manager-backed

Answer: C

Explanation:

QUESTION NO: 70

An Organization Administrator needs to enable communication between two vApps.

What is one way to configure this?

- A. Connect both vApps to a common organization network.
- B. Configure vShield Manager to establish a bridge between the two vApp networks.
- C. Configure a bridge between the vApp networks using vCloud Connector.
- D. Connect the network pools in vCloud Director to the same vSphere port groups.

Answer: A

Explanation:

QUESTION NO: 71

When an Organization was configured a month ago, the runtime lease was set to never expire and the storage lease was set to two days. The vApp was shut down by the user seven days ago and is no longer available. What are two reasons the VM is no longer visible to the user? (Choose two.)

- A. The vApp was moved to expired items.
- B. The vApp was archived.
- C. The vApp was disabled.
- D. The vApp was deleted.

Answer: A,D

Explanation:

QUESTION NO: 72

A Pay-As-You-Go Organization vDC just ran out of resources. The resource pool backing the Provider vDC is fully consumed, but the cluster has no more resources to spare and is at its maximum size. Which two actions should the administrator perform to allocate more resources to the Organization vDC? (Choose two.)

- A. Change the setting on the resource pool backing the Provider vDC to Unlimited.
- B. Add a second cluster to the Provider vDC.
- C. Add a resource pool to the Provider vDC from another cluster.
- D. Add another Organization vDC backed by a different Provider vDC to the Organization.

Answer: C,D

Explanation:

QUESTION NO: 73

An administrator is auditing VLAN to External Network mapping for a vCloud implementation.

Where will the administrator find this information?

- A. It is a part of the Networking view
- B. It is a part of the Virtual Network view in vCenter Resources
- C. It is a part of the External Network view
- D. It can be retrieved by generating an External Network Report

Answer: C

Explanation:

QUESTION NO: 74

An IT administrator installs a vCenter Chargeback server and needs to configure the SMTP server. Alerts and email messages are not being sent out from the vCenter Chargeback server.

Which role should be assigned to address this issue?

- A. Hierarchy Manager
- B. Super User
- C. Root
- D. Administrator

Answer: B

Explanation:

QUESTION NO: 75

A vCloud Service Provider offers Infrastructure-as-a-Service consisting of a fixed allocation of resources. Only a portion of the resources are guaranteed. If customers exceed the guarantee a new cost is applied. Which vCenter Chargeback billing policy should be used in this situation?

- A. vCloud Director Actual Usage
- B. vCloud Director Allocation Pool
- C. vCloud Director Overage Allocation Pool
- D. vCloud Director Reservation Pool

Answer: C

Explanation:

QUESTION NO: 76

A vCloud administrator needs to create an Organization for a tenant. This tenant should not have permission to share catalogs with other Organizations. Which setting should the administrator select when creating this Organization?

- A. Catalog Publishing, cannot publish catalogs
- B. Catalog Publishing, isolate catalogs
- C. Catalog Publishing, cannot share catalogs
- D. Catalog Publishing, cannot distribute catalogs

Answer: A

Explanation:

QUESTION NO: 77

An administrator needs to create an Organization where vApps meet the following requirements:

- Stop vApps automatically in one week.
- Keep the storage in place for an additional week.
- vApps must be able to be easily restarted.

Which two actions should the administrator take to meet these requirements? (Choose two.)

- A. Set the storage lease to never expire.
- B. Set the maximum runtime lease to 1 week.
- C. Set the storage lease to move to expired items.
- D. Set the storage lease to 2 weeks.

Answer: B,C

Explanation:

QUESTION NO: 78

Click the Exhibit button.

The screenshot shows the 'New External Network' configuration window. The 'Ready to Complete' tab is active, displaying the following configuration details:

Network name:	External 99A
Description:	
vSphere network:	External
Network mask:	255.255.255.0
Default gateway:	192.168.4.254
Primary DNS:	
Secondary DNS:	
DNS suffix:	
Address pool for static IP allocation:	192.168.4.100 - 192.168.4.200

An error message is displayed in a red box: "Port group 'External' has a conflicting VLAN with another port group that is currently being used."

A system administrator is attempting to create a separate external network for each of two organizations. The first network completes successfully, but the second network shows the error in the exhibit.

What are three different ways the administrator could successfully create the networks described in this situation? (Choose three.)

- A. Modify the configuration to allow both organizations to use the same external network.
- B. Reconfigure the second external network to provision networks from a different VLAN-backed network pool.
- C. Reconfigure one organization to use a direct connect external network and the other to use an external routed network.
- D. Modify the System Settings of the vCloud deployment to allow for overlapping external networks.
- E. Reconfigure the port group backing one of the port groups for a different, unused VLAN.

Answer: A,D,E

Explanation:

QUESTION NO: 79

An administrator needs to create a custom authentication source for an Organization in vCloud Director.

The Custom LDAP service should be configured in which location to allow an organization to utilize its own authentication?

- A. at the Organization level
- B. at the vCloud Director level
- C. on the vCenter Server
- D. on an AD domain controller

Answer: A

Explanation:

QUESTION NO: 80

Which two components are required for a vCloud infrastructure installation? (Choose two.)

- A. AMQP Broker
- B. vCloud Connector
- C. vShield Manager
- D. Oracle/MS SQL database

Answer: C,D

Explanation:

QUESTION NO: 81

Which two courses of action are required in order to license a vCloud Director installation? (Choose two.)

- A. Using the vSphere client, go to Home > Licensing and add the license key for vShield Manager into vCenter.
- B. Using the vCD GUI, enter in the vCloud Director license key.
- C. Using the vSphere client, go to Home > Licensing and add the license key for vCloud Director into vCenter.
- D. Using the vCD GUI, enter in the vShield Manager license key.

Answer: A,B

Explanation:

QUESTION NO: 82

An administrator needs a list of all Resource Pools that are allocated to all Provider vDCs in a vCloud implementation.

Where will the administrator find this information?

- A. by running a Resource Usage report from vCenter Chargeback
- B. by reviewing the Resource Pools from vCenter Resources
- C. by reviewing the Resource Allocation from vCenter Resources
- D. by running a Resource Allocation report from vCD

Answer: B

Explanation:

QUESTION NO: 83

An administrator notices that an end user has exhausted the cluster's resources originally provisioned to its Pay-As-You-Go organization. The administrator needs to add additional resources on another vCenter Server and provide it to this Organization. Which two steps allow for the most efficient way to complete this task? (Choose two.)

- A. Create a new cluster on the new vCenter Server.
- B. Add the new cluster to the Organization.
- C. Add the new cluster to the Provider VDC.
- D. Create a new secondary Organization.

Answer: A,C

Explanation:

QUESTION NO: 84

An administrator is unable to create an Organization catalog.

What is a possible cause?