

**100%** Money Back  
**Guarantee**

**Vendor:**OMG

**Exam Code:**OMG-OCUP-200

**Exam Name:**OMG-Certified UML Professional  
Intermediate Exam

**Version:**Demo

### QUESTION 1

What best describes the distinction between a delegation connector and an assembly connector?

- A. A delegation connector can be used to model the internals of a component, while an assembly connector cannot.
- B. Assembly connectors provide white box views of components, while delegation connectors provide black box views.
- C. An assembly connector connects two components while a delegation connector connects the internal contract of a component with its external parts.
- D. An assembly connector connects the required interface or required port of one component with the provided interface or provided port of another component, while a delegation connector connects the external contract of a component with its internal parts.

Correct Answer: D

---

### QUESTION 2

What will be deleted when performing a DestroyObjectAction on an object that participates in a composition association with many components?

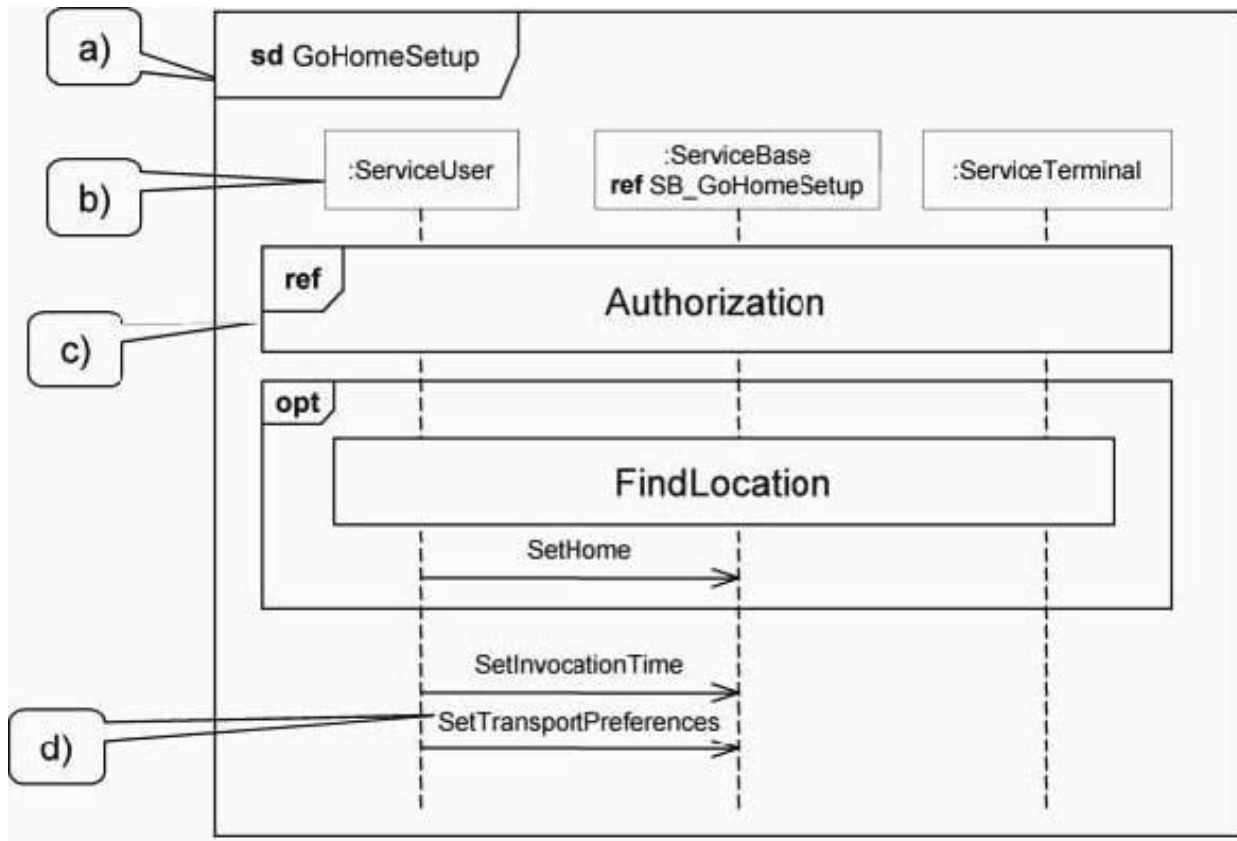
- A. object
- B. component objects
- C. object and all its links
- D. object and all its component objects
- E. object, all its links, and all linked objects

Correct Answer: A

---

### QUESTION 3

In the exhibit, what represents an interaction occurrence?



A. a

B. b

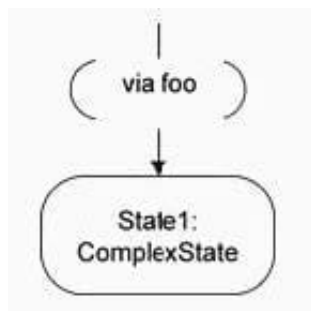
C. c

D. d

Correct Answer: C

#### QUESTION 4

What does via foo in the exhibit designate?



A. transient pseudostate named foo

B. an action foo associated with the transition

- C. a transition terminating on the foo entry point
- D. the sending of a foo message on the transition
- E. a Boolean guard equal to the logical value of foo

Correct Answer: C

---

#### **QUESTION 5**

What is true of a completion transition?

- A. has no trigger defined
- B. is only triggered by a completion event
- C. is executed when the final state is reached
- D. is executed when the state machine is terminated

Correct Answer: B

---

#### **QUESTION 6**

Which must be true in order to use a delegation connector to connect two components?

- A. The components must have complex ports.
- B. One component must be a subtype of the other.
- C. The components must be related to each other via a dependency.
- D. One component must be part of the internal realization of the other component.

Correct Answer: D

---

#### **QUESTION 7**

Which list contains only connectable elements?

- A. port and connector end
- B. behavior, port and property
- C. connector end, port and part
- D. property, port, and parameter
- E. behavior, connector end, and port

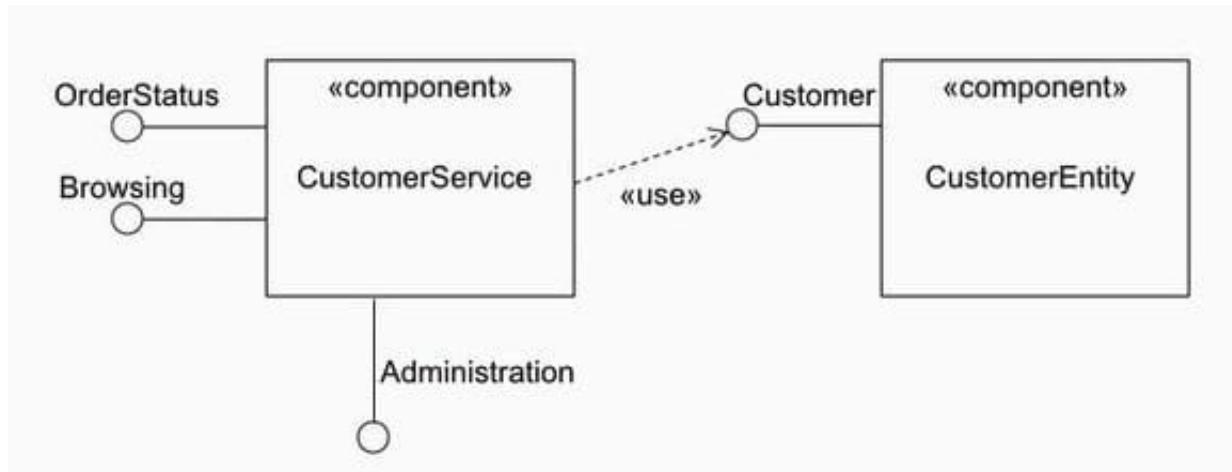
Correct Answer: D

---

**QUESTION 8**

Refer to the exhibit.

How many interfaces does the CustomerService component make visible to its clients?



- A. 0
- B. 1
- C. 2
- D. 3
- E. 4

Correct Answer: D

---

**QUESTION 9**

What can return a result on an output pin?

- A. SendObjectAction
- B. CallBehaviorAction
- C. DestroyObjectAction
- D. AddVariableValueAction
- E. BroadcastSignalOperation

Correct Answer: B

---

**QUESTION 10**

What is permitted for the profile mechanism?

- A. creates new metamodels
- B. extends existing metamodels
- C. changes existing metamodels
- D. removes existing metamodels

Correct Answer: B

---

#### QUESTION 11

An encapsulated classifier is characterized by which fact?

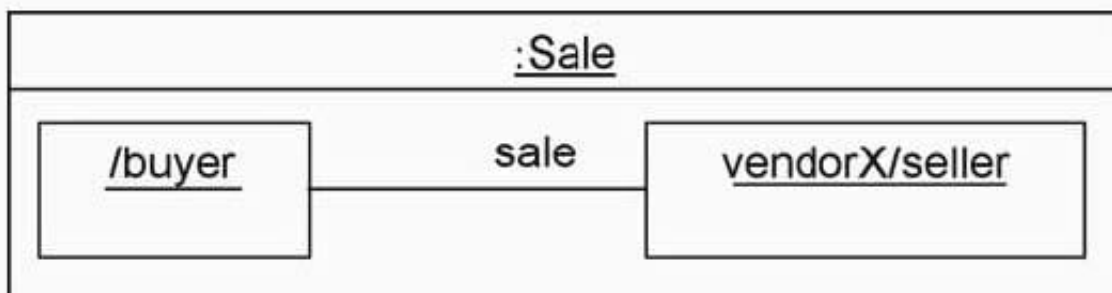
- A. has an encapsulation shell
- B. can own one or more ports
- C. hides information from other classifiers
- D. acts as a package and can own one or more classifiers

Correct Answer: B

---

#### QUESTION 12

What is wrong with the Sale instance diagram shown in the exhibit?



- A. Sale instance name is missing.
- B. buyer instance name is missing.
- C. Link name should be underlined.
- D. Link should be shown with a dashed line.
- E. Types of the buyer and seller parts are missing.

Correct Answer: C

