

100% Money Back
Guarantee

Vendor:Network Appliance

Exam Code:NS0-502

Exam Name:NetApp Certified Implementation
Engineer-SAN and Virtualization

Version:Demo

QUESTION 1

When assessing a current storage solution, it is critical to document the current NetApp storage system configuration.

Which factor should NOT be considered when documenting this existing configuration?

- A. Data ONTAP version
- B. current data layout (RAID groups, aggregates, volumes, etc...)
- C. storage system name and IP
- D. host power cables and power usage

Correct Answer: D

QUESTION 2

Which commands allow you to enable NetApp deduplication and verify space savings?

- A. sis on , sis start , df s
- B. asis on , asis start , df s
- C. sis on , sis start , df r
- D. sis on, sis start, df p

Correct Answer: A

QUESTION 3

A 100-GB thinly provisioned LUN is allocated to a Windows host. 100 GB of data is written into the LUN. The current capacity utilization on the disk array as well as the host is 100%. 50 GB of data is deleted from the LUN. Space reclaimer has NOT been run.

What is the current capacity utilization on both the host and the disk array?

- A. 50% on the host, 100% on the disk array
- B. 100% on the host, 50% on the disk array
- C. 50% on the host, 50% on the disk array
- D. 100% on the host, 100% on the disk array

Correct Answer: A

QUESTION 4

Which three protocols can be used for communications between a host running SnapDrive for Windows and the NetApp Storage Controllers? (Choose three.)

- A. http:
- B. https:
- C. ftp:
- D. RPC
- E. ssh

Correct Answer: ABD

QUESTION 5

You have a Windows 2003 host using the NetApp ONTAP DSM MPIO environment with a FAS6000 high availability configuration running single image cfmode. When you disconnect a cable from the FC switch to a storage target port, how will the I/O fail over?

- A. I/O will fail over to any port on the original controller but NOT on the partner controller that is part of the associated portset. Choice of path will be controlled by the host's MPIO weighting table.
- B. I/O will fail over to any port on either controller that is part of the associated portset. Choice of path will be controlled by the host's MPIO weighting table.
- C. I/O will fail over to any port on the original controller that is part of the associated portset. Choice of path will be controlled by NetApp storage system igroup settings.
- D. I/O will fail over to any port on either controller that is part of the associated portset. Choice of path will be controlled by NetApp storage system igroup settings.

Correct Answer: B

QUESTION 6

What information needs to be included in a cabinet diagram? (Choose three.)

- A. NetApp storage system login information
- B. physical location of the rack in the data center
- C. storage controller configuration information

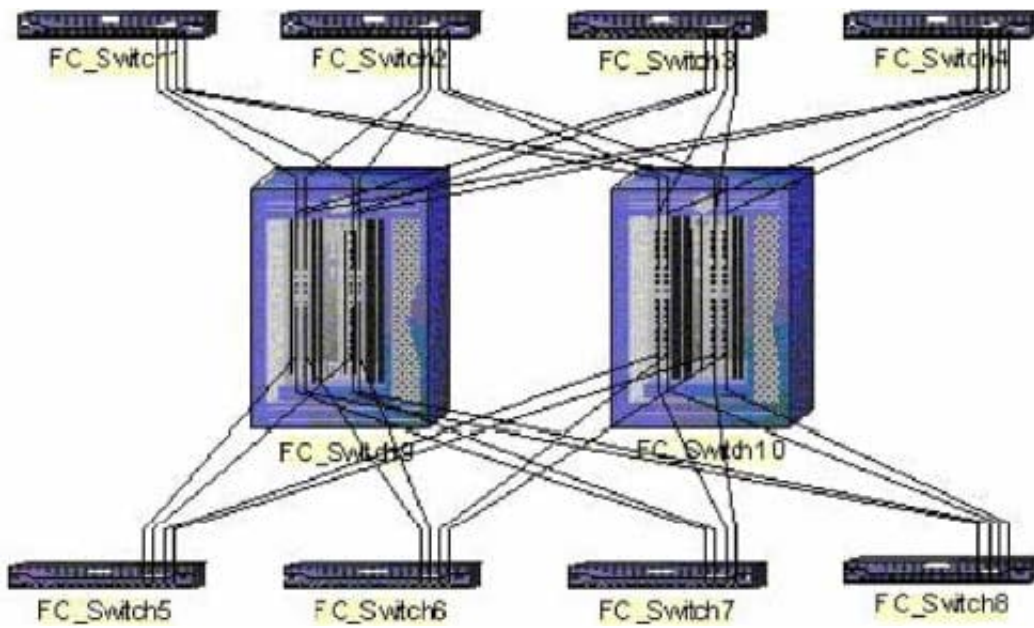
D. rack identifying information

E. location in the rack of NetApp storage controllers and storage shelves

Correct Answer: BDE

QUESTION 7

Click the Exhibit button.



Based on the diagram shown, what is the appropriate FC switch topology?

A. full mesh

B. core-edge

C. full cascade

D. partial mesh

Correct Answer: B

QUESTION 8

You are about to replace a failed Brocade Fibre Channel switch.

Which three steps do you take prior to connecting the switch in the SAN? (Choose three.)

A. Force the new switch to be the principle switch.

- B. Change the domain ID of the replacement switch to the domain ID of the failed switch.
- C. Clear all zoning configurations on the replacement switch.
- D. Change the core PID format of the replacement switch to the core PID format of the failed switch.
- E. Preload the zoning information from the fabric onto the new switch.

Correct Answer: BCD

QUESTION 9

A company is planning to use physical Raw Device Mappings (RDMs) in their ESX environment.

Which LUN type should they use on the NetApp storage system if they want to prevent LUN I/O alignment issues?

- A. They should use the VMware LUN type.
- B. They should use the LUN type matching the guest operating system.
- C. ESX will automatically align I/O on WAFL boundaries if NetApp host utilities is installed.
- D. Any UNIX LUN type will work since it is an RDM.

Correct Answer: B

QUESTION 10

A customer has a four-node SUN cluster configuration. Each node has two, dual-ported HBAs. What is the minimum number of igroups that need to be created to map a LUN to the cluster?

- A. 1
- B. 2
- C. 4
- D. 8

Correct Answer: A

QUESTION 11

During an equipment move a Fibre Channel cable from a host to a switch is accidentally plugged into a different switch port on the FC switch. However, the host still sees the storage devices on all its paths.

What are two reasons why this is possible? (Choose two.)

- A. LUN masking uses switch port numbers and not WWPNs.
- B. The host HBA WWPN is a part of a WWPN zoning scheme.
- C. The Fibre Channel address for the HBA has not changed.
- D. The WWPN Alias was n changed on the NetApp Controllers.

Correct Answer: BD

QUESTION 12

Which native GUI switch tool is used to manage Cisco MDS-Series switches and directors?

- A. Operations Manager
- B. Fabric Manager
- C. Web Tools
- D. Data Fabric Manager

Correct Answer: B