

**100%** Money Back  
**Guarantee**

**Vendor:**NetApp

**Exam Code:**NS0-175

**Exam Name:**Cisco and NetApp FlexPod Design  
Specialist

**Version:**Demo

**QUESTION 1**

A customer is verifying that they have separation on their FC switch fabric to protect their FlexPod solution from their other storage devices.

Which two technologies enable the customer to accomplish this task? (Choose two.)

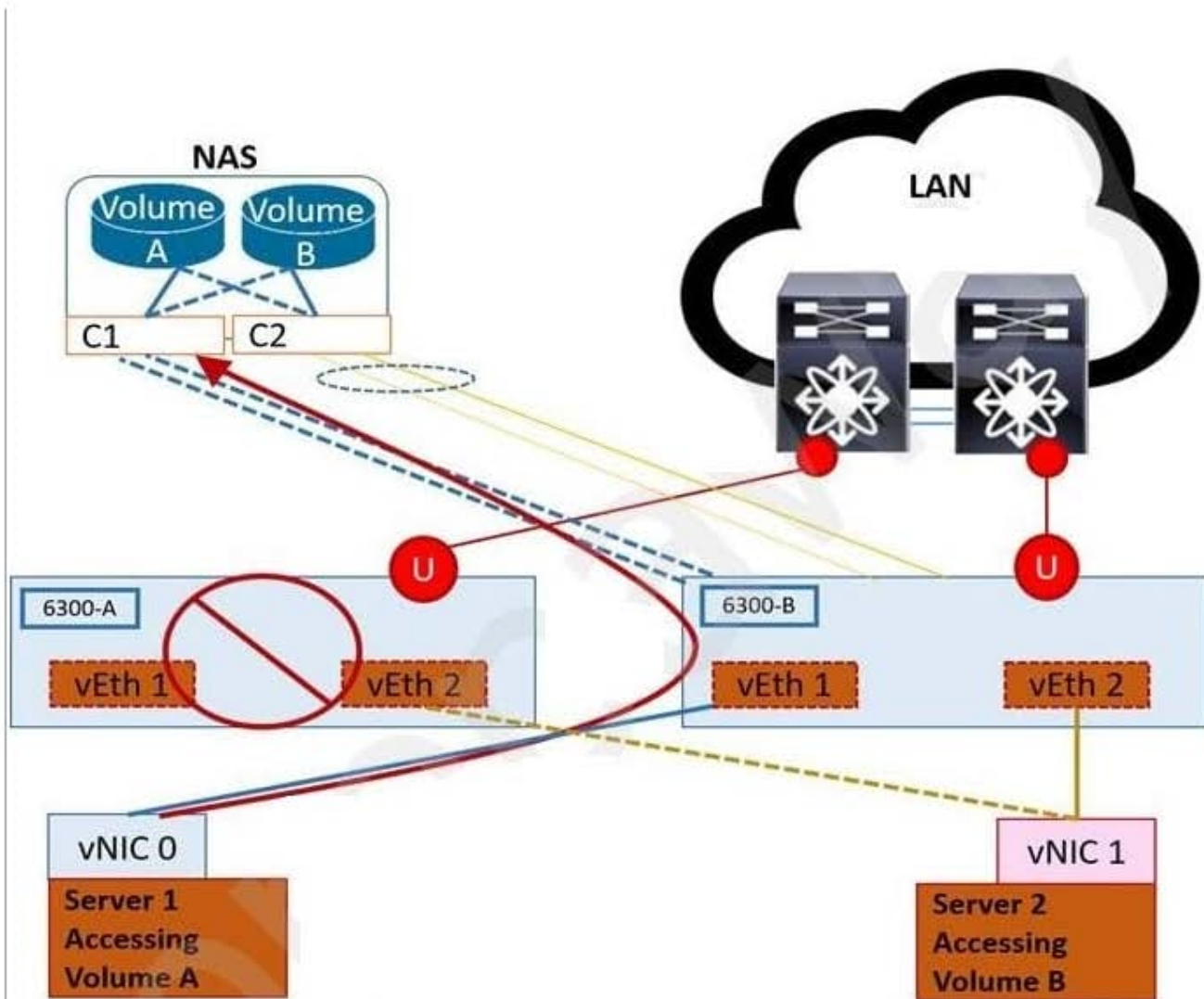
- A. WWPN zoning
- B. VASN
- C. IQN igroup
- D. VLAN

Correct Answer: AD

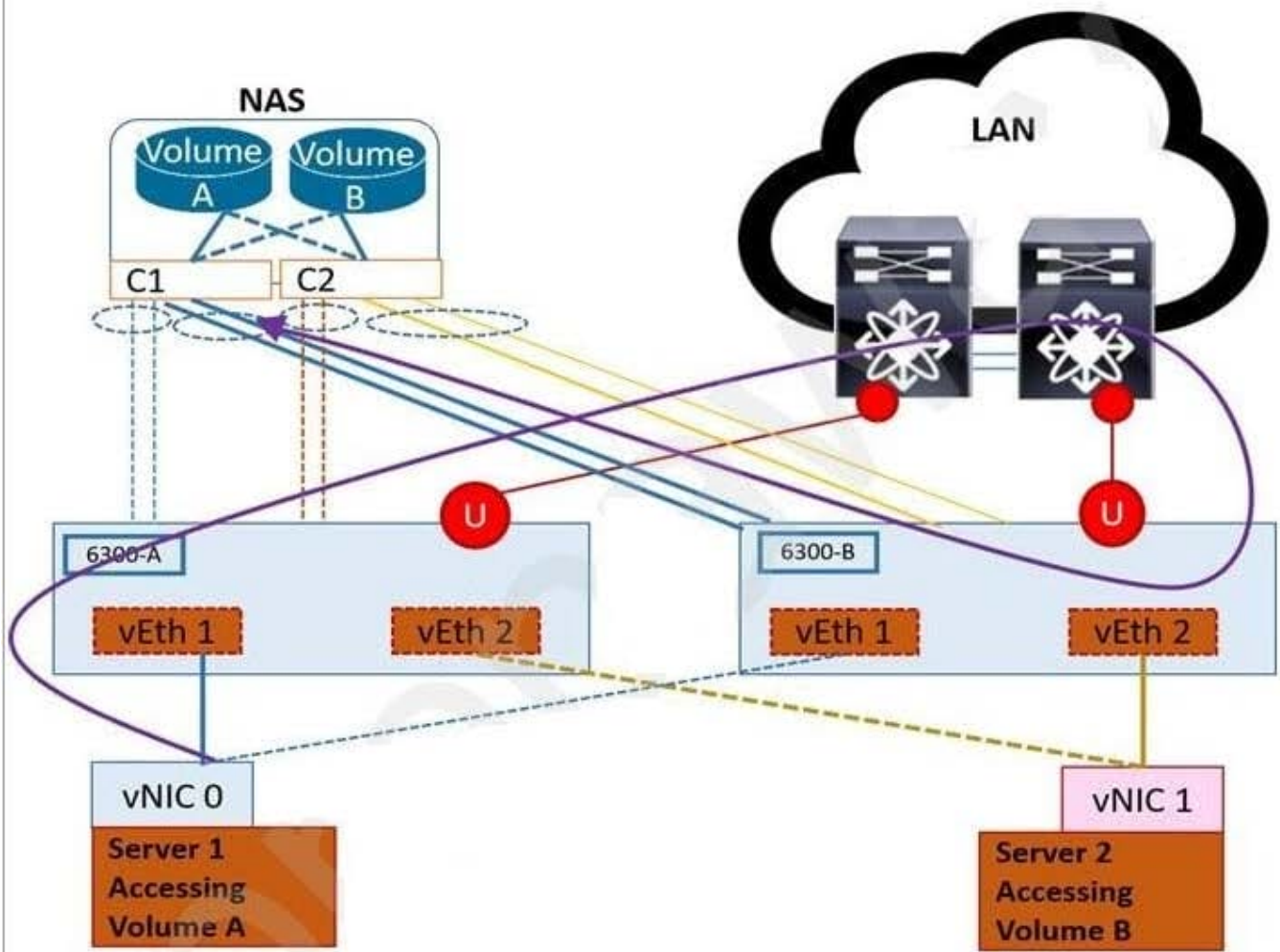
---

**QUESTION 2**

Click the Exhibit button. Exhibit 1.

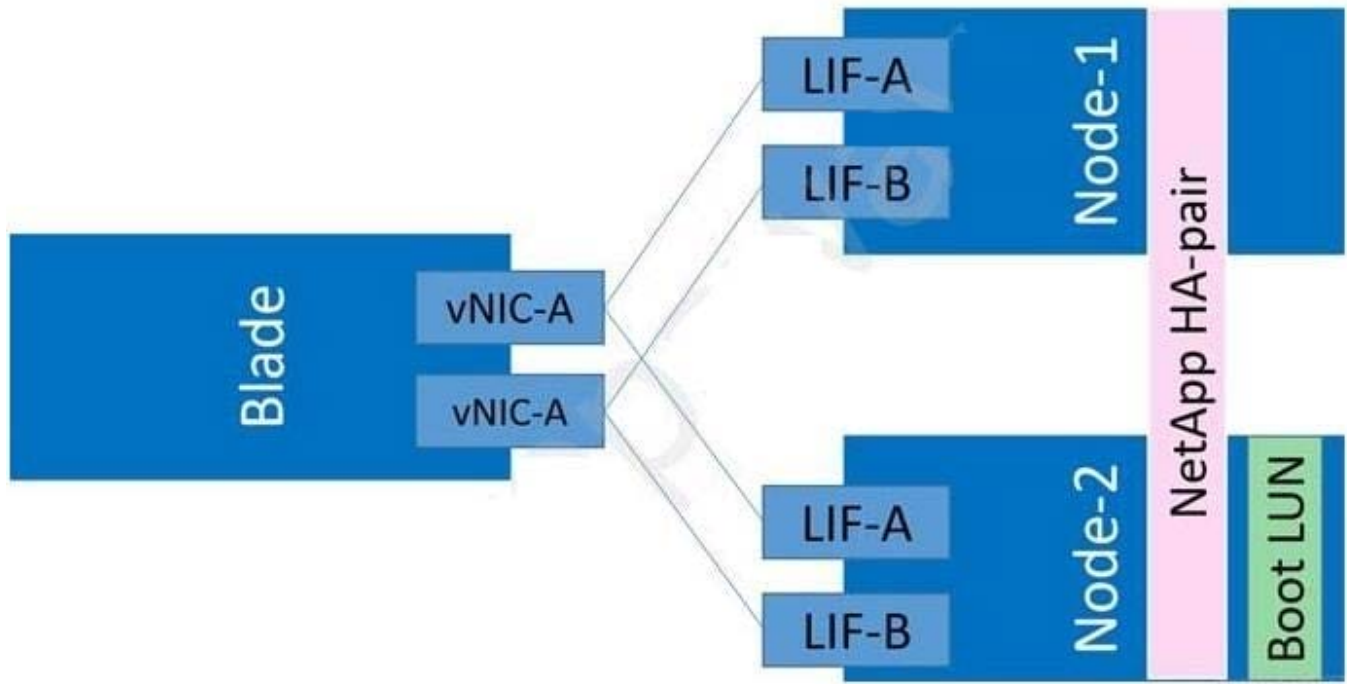


**Figure 1**



**Figure 2**

Exhibit 2.



Referring to the exhibit, UCS Fabric Interconnect 6300-A fails as shown in Figure 1. Due to the storage LIF configuration, after UCS Fabric Interconnect 6300-A is restored, traffic flows as shown in Figure 2.

To enable this capability, on which two UCS port types should storage VLANs be accessible? (Choose two.)

- A. uplink ports
- B. appliance ports
- C. fabric ports
- D. switch ports

Correct Answer: AB

Reference: [https://www.cisco.com/c/en/us/td/docs/unified\\_computing/ucs/ucs-manager/GUI-User-Guides/Getting-Started/3-2/b\\_UCSM\\_Getting\\_Started\\_Guide\\_3\\_2/b\\_UCSM\\_Getting\\_Started\\_Guide\\_3\\_2\\_chapter\\_010.pdf](https://www.cisco.com/c/en/us/td/docs/unified_computing/ucs/ucs-manager/GUI-User-Guides/Getting-Started/3-2/b_UCSM_Getting_Started_Guide_3_2/b_UCSM_Getting_Started_Guide_3_2_chapter_010.pdf) (8)

### QUESTION 3

A customer is performing a server refresh of their FlexPod solution to accommodate business growth. The customer is interested in using Cisco C-Series servers, and supporting multiple 40 Gbps link to each server, upgrading from the existing 10 Gbps links.

Which two VICs support these requirements? (Choose two.)

- A. Cisco UCS 1480 VIC
- B. Cisco UCS 1497 VIC

- C. Cisco UCS 1495 VIC
- D. Cisco UCS 1440 VIC

Correct Answer: AD

Reference: [https://www.cisco.com/c/en/us/td/docs/unified\\_computing/ucs/UCS\\_CVDs/flexpod\\_sap\\_ucsm40\\_fcsan\\_design.html](https://www.cisco.com/c/en/us/td/docs/unified_computing/ucs/UCS_CVDs/flexpod_sap_ucsm40_fcsan_design.html)

---

#### QUESTION 4

You are creating a FlexPod with a significant AI workload and would like to use NVIDIA's SXM2-based GPUs.

Which Cisco UCS server would you use in this scenario?

- A. Cisco UCS C240 M5
- B. Cisco UCS B200 M5
- C. Cisco UCS C480 ML M5
- D. Cisco UCS C125 M5

Correct Answer: C

Reference: [https://docs.netapp.com/us-en/flexpod/pdfs/sidebar/FlexPod\\_Datacenter\\_Technical\\_Specifications.pdf](https://docs.netapp.com/us-en/flexpod/pdfs/sidebar/FlexPod_Datacenter_Technical_Specifications.pdf)

---

#### QUESTION 5

A customer is designing a FlexPod solution that must satisfy the requirements shown below:

- have disaster recovery to an alternative data center,
- must have continuous replication of data for a database,
- must leverage a 100Gbps capable switch,
- have a maximum distance of 700 km.

In this scenario, which two components would be used to satisfy the requirements? (Choose two.)

- A. MetroCluster FC
- B. Cisco Nexus 3232C
- C. MetroCluster IP
- D. Cisco MDS 9132T

Correct Answer: AC

Reference: <https://www.cisco.com/c/dam/en/us/products/collateral/servers-unified-computing/flexpodmetrocluster-ip-vxlan-multi-site-wp.pdf>

---

### QUESTION 6

An administrator wants to ensure secure authentication while accessing a NetApp ONTAP system.

In this scenario, which two access methods should be used? (Choose two.)

- A. RSH
- B. SSH
- C. HTTPS
- D. HTTP

Correct Answer: AB

Reference: <https://www.netapp.com/fr/media/10674-tr4569.pdf>

---

### QUESTION 7

A customer wants to use a Cisco Nexus 93180YC-FX switch to support the FC protocol for booting from SAN without having to deploy additional Cisco 900 Series MDS switches in their FlexPod Datacenter configuration.

In this scenario, what is required for this solution?

- A. The customer must enable the FC license on the 93180YC-FX switch
- B. The customer must deploy the 93180YC-FX switch as part of a Cisco ACI fabric
- C. The customer must directly connect the NetApp AFF system to the Cisco UCS Fabric Interconnects
- D. The customer must add an expansion FC module to the 93180YC-FX switch

Correct Answer: C

Reference: [https://www.cisco.com/c/en/us/td/docs/unified\\_computing/ucs/UCS\\_CVDs/fp\\_vmware\\_vsphere\\_7\\_0\\_ontap\\_9\\_7.html](https://www.cisco.com/c/en/us/td/docs/unified_computing/ucs/UCS_CVDs/fp_vmware_vsphere_7_0_ontap_9_7.html)

---

### QUESTION 8

A customer wants to deploy a FlexPod Datacenter solution in a limited amount of rack space. After planning for the networking and storage devices required for the deployment, they realize they have six rack units of space remaining. They need to install as many servers as possible in this available rack space.

In this scenario, which solution allows them to accomplish their objective?

- A. three Cisco UCS C4200 rack servers
- B. four Cisco UCS B480 M blade servers
- C. six Cisco UCS C220 M5 rack servers

D. eight Cisco UCS B200 M5 blade servers

Correct Answer: D

Reference: [https://www.cisco.com/c/en/us/td/docs/unified\\_computing/ucs/UCS\\_CVDs/flexpod\\_vmware\\_vs\\_7\\_design.html#\\_Toc58868310](https://www.cisco.com/c/en/us/td/docs/unified_computing/ucs/UCS_CVDs/flexpod_vmware_vs_7_design.html#_Toc58868310)

---

### QUESTION 9

You have designed a FlexPod configuration with VXLAN configured on Cisco Nexus 9000 Series switches operating in NX-OS mode.

Which two statements are true in this scenario? (Choose two.)

- A. VXLAN segments are independent of the underlying network topology
- B. VXLAN is supported only on Cisco MDS 9000 Series switches
- C. VXLAN supports the Spanning Tree Protocol for loop prevention
- D. VXLAN is a Layer 2 overlay scheme over a Layer 3 network

Correct Answer: CD

---

### QUESTION 10

Which Cisco UCS Fabric Interconnect model has multiple 100 Gbps ports available for use?

- A. Cisco UCS 6332
- B. Cisco UCS 6324
- C. Cisco UCS 6454
- D. Cisco UCS 6332-16UP

Correct Answer: C

Reference: <https://www.cisco.com/c/dam/en/us/products/collateral/servers-unified-computing/ucs-b-seriesblade-servers/6400-specsheet.pdf>

---

### QUESTION 11

A customer wants to upgrade their core fabric between each site with a modular chassis switch that supports up to 400GbE per port to accommodate more business transaction volume.

In this scenario, which device would help them accomplish their objective?

- A. Cisco Nexus 9504



- B. Cisco Nexus 9332C
- C. Cisco MDS 9706
- D. Cisco Catalyst 9400

Correct Answer: A

Reference: <https://www.cisco.com/c/en/us/solutions/data-center/high-capacity-400g-data-centernetworking/index.html>

---

## QUESTION 12

You are sizing a FlexPod Datacenter solution for multitenancy use.

What are two important platform scaling considerations in this scenario? (Choose two.)

- A. maximum NetApp ONTAP cluster limits
- B. maximum NetApp ONTAP storage VM limits
- C. maximum Cisco vPC interfaces between Fabric Interconnects
- D. maximum Cisco L1, L2 interfaces between Fabric Interconnects

Correct Answer: AD