

**100%** Money Back  
**Guarantee**

**Vendor:**Juniper

**Exam Code:**JN0-635

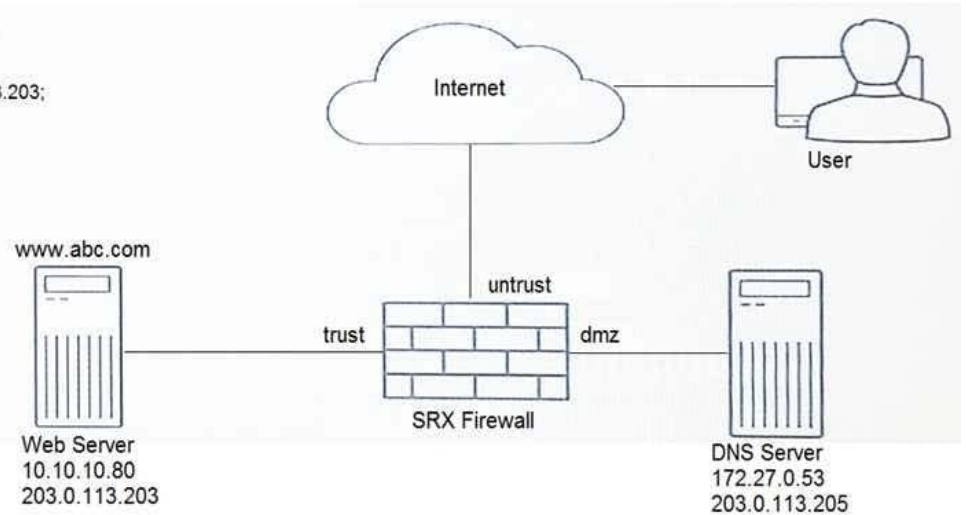
**Exam Name:**Security, Professional

**Version:**Demo

## QUESTION 1

Click the Exhibit button.

```
user@srx> show configuration security nat static
static {
  rule-set abc_rule1 {
    from zone untrust;
    rule 1 {
      match {
        destination-address 203.0.113.203;
      }
      then {
        static-nat {
          prefix {
            10.10.10.80;
          }
        }
      }
    }
  }
}
```



A user is trying to reach a company's website, but the connection errors out. The security policies are configured correctly.

Referring to the exhibit, what is the problem?

- A. Persistent NAT must be enabled
- B. The action for rule 1 must change to static-nat inet
- C. DNS ALG must be disabled
- D. Static NAT is missing a rule for DNS server

Correct Answer: D

## QUESTION 2

Click the Exhibit button.

```
user@srx> show security mka statistics
```

```
Interface name: fxpl
Received packets: 3
Transmitted packets: 3
Version mismatch packets: 0
CAK mismatch packets: 6
ICV mismatch packets: 0
Duplicate message identifier packets: 0
Duplicate message number packets: 0
Duplicate address packets: 0
Invalid destination address packets: 0
Formatting error packets: 0
Old Replayed message number packets 0
```

While configuring the SRX345, you review the MACsec connection between devices and note that it is not working.

Referring to the exhibit, which action would you use to identify problem?

- A. Verify that the formatting settings are correct between the devices and that the software supports the version of MACsec in use
- B. Verify that the connectivity association key and the connectivity association key name match on both devices
- C. Verify that the transmission path is not replicating packets or correcting frame check sequence error packets
- D. Verify that the interface between the two devices is up and not experiencing errors

Correct Answer: B

Reference: [https://www.juniper.net/documentation/en\\_US/junos/topics/reference/command-summary/show-security-mka-statistics.html](https://www.juniper.net/documentation/en_US/junos/topics/reference/command-summary/show-security-mka-statistics.html)

---

### QUESTION 3

You must troubleshoot ongoing problems with IPsec tunnels and security policy processing. Your network consists of SRX340s and SRX5600s.

In this scenario, which two statements are true? (Choose two.)

- A. IPsec logs are written to the kmd log file by default
- B. IKE logs are written to the messages log file by default
- C. You must enable data plane logging on the SRX340 devices to generate security policy logs
- D. You must enable data plane logging on the SRX5600 devices to generate security policy logs

Correct Answer: AD

---

#### QUESTION 4

You have a remote access VPN where the remote users are using the NCP client. The remote users can access the internal corporate resources as intended; however, traffic that is destined to all other Internet sites is going through the remote access VPN. You want to ensure that only traffic that is destined to the internal corporate resources use the remote access VPN.

Which two actions should you take to accomplish this task? (Choose two.)

- A. Enable the split tunneling feature within the VPN configuration on the SRX Series device
- B. Enable IKEv2 within the VPN configuration on the SRX Series device
- C. Configure the necessary traffic selectors within the VPN configuration on the SRX Series device
- D. Configure split tunneling on the NCP profile on the remote client

Correct Answer: CD

Reference: [https://www.juniper.net/documentation/en\\_US/junos/topics/topic-map/security-remote-accessvpns-with-ncp-exclusive-remote-access-client.html](https://www.juniper.net/documentation/en_US/junos/topics/topic-map/security-remote-accessvpns-with-ncp-exclusive-remote-access-client.html)

---

#### QUESTION 5

You are trying to get a SSH honeypot set up on a Juniper ATP Appliance collector. The collector is running on hardware with two physical interfaces and two physical CPU cores. The honeypot feature is not working.

Which statement is true in this scenario?

- A. The collector must have at least three physical interfaces
- B. The collector must have at least four physical cores
- C. The collector must have at least four physical interfaces
- D. The collector must have at least six physical cores

Correct Answer: A

---

#### QUESTION 6

Click the Exhibit button.

```
user@srx> show security flow session
Session ID: 358216, Policy name: default-policy-logical-system-00/2, Timeout:
1788, Valid
  In: 10.10.10.1/63261 --> 203.0.113.10/443;tcp, Conn Tag: 0x0, If: ge-0/0/1.0,
Pkts: 632, Bytes: 49341,
  Out: 203.0.113.10/443 --> 172.25.11.4/21740;tcp, Conn Tag: 0x0, If: ge-
0/0/0.0, Pkts: 662, Bytes: 79325,
```

Referring to the exhibit, which statement is true?

- A. Source NAT with PAT is occurring
- B. Destination NAT is occurring
- C. Static NAT without PAT is occurring
- D. Source NAT without PAT is occurring

Correct Answer: A

---

#### QUESTION 7

You are asked to set up notifications if one of your collector traffic feeds drops below 100 kbps.

Which two configuration parameters must be set to accomplish this task? (Choose two.)

- A. Set a traffic SNMP trap on the JATP appliance
- B. Set a logging notification on the JATP appliance
- C. Set a general triggered notification on the JATP appliance
- D. Set a traffic system alert on the JATP appliance

Correct Answer: BD

---

#### QUESTION 8

An administrator wants to implement persistent NAT for an internal resource so that external hosts are able to initiate communications to the resource, with the internal resource having previously sent packets to the external hosts.

Which configuration setting is used to accomplish this goal?

- A. persistent-nat permit any-remote-host
- B. persistent-nat permit target-host-port
- C. address-persistent
- D. persistent-nat permit target-host

Correct Answer: A

---

#### **QUESTION 9**

When would you use the port-overloading-factor 1 setting?

- A. to enable the port-overloading
- B. to disable the port-overloading
- C. to map ports with 1:1 ratio for port-overloading
- D. to set the maximum port-overloading capacity to 65,536

Correct Answer: C

Reference: [https://www.juniper.net/documentation/en\\_US/junos/topics/reference/configuration-statement/security-edit-port-overloading-interface-source-nat.html](https://www.juniper.net/documentation/en_US/junos/topics/reference/configuration-statement/security-edit-port-overloading-interface-source-nat.html)

---

#### **QUESTION 10**

You are asked to look at a configuration that is designed to take all traffic with a specific source ip address and forward the traffic to a traffic analysis server for further evaluation. The configuration is no longer working as intended.

```

[edit]
user@srx# show
...
interfaces (
  xe-0/0/1 {
    description "Connected to Finance";
    unit 0 {
      family inet {
        address 10.1.1.1/24;
      }
    }
  }
  xe-0/1/0 (
    description "Connected to Internet";
    unit 0 {
      family inet (
        address 192.168.2.2/30;
      )
    }
  }
  xe-0/2/1 {
    description "Connected to Sales";
    unit 0 {
      family inet {
        address 10.3.2.21/24;
      }
    }
  }
}
firewall {
  filter filter1 {
    term t1 {
      from {
        source-address {
          10.1.1.3/32;
        }
      }
      then {
        next-interface {
          xe-0/1/0.0;
          routing-instance evall;
        }
      }
    }
    term t2 {
      then {
        routing-instance default;
      }
    }
  }
}
routing-instances {
  evall {
    instance-type virtual-router;
    interface xe-0/1/0.0;
  }
}

```

Referring to the exhibit which change must be made to correct the configuration?

- A. Apply the filter as in input filter on interface xe-0/2/1.0
- B. Apply the filter as in input filter on interface xe-0/0/1.0
- C. Create a routing instance named default
- D. Apply the filter as in output filter on interface xe-0/1/0.0

Correct Answer: B

---

#### **QUESTION 11**

Which interface family is required for Layer 2 transparent mode on SRX Series devices?

- A. LLDP
- B. Ethernet switching
- C. inet
- D. VPLS

Correct Answer: B

---

#### **QUESTION 12**

Which three roles or protocols are required when configuring an ADVPN? (Choose three.)

- A. OSPF
- B. shortcut partner
- C. shortcut suggester
- D. IKEv1
- E. BGP

Correct Answer: ABC

Reference: [https://www.juniper.net/documentation/en\\_US/junos/topics/topic-map/security-auto-discoveryvpns.html](https://www.juniper.net/documentation/en_US/junos/topics/topic-map/security-auto-discoveryvpns.html)