

100% Money Back
Guarantee

Vendor:HP

Exam Code:HP2-Z37

Exam Name:Fast Track - Applying HP FlexNetwork
Fundamentals

Version:Demo

QUESTION 1

Refer to the exhibit.

```
<Comware> display link-aggregation verbose

Loadsharing Type: Shar -- Loadsharing, NonS -- Non-Loadsharing
Port Status: S -- Selected, U -- Unselected
Flags: A -- LACP_Activity, B -- LACP_Timeout, C -- Aggregation,
       D -- Synchronization, E -- Collecting, F -- Distributing,
       G -- Defaulted, H -- Expired

Aggregation Interface: Bridge-Aggregation1
Aggregation Mode: Dynamic
Loadsharing Type: Shar
System ID: 0x8000, d07e-28ce-c94f

Local:
  Port          Status  Priority  Oper-Key  Flag
-----
GE1/0/3        S       32768    1         {ACDEFG}
GE1/0/4        U       32768    1         {ACG}

<-output omitted->
```

A network administrator has implemented link aggregation on an HP Comware switch using LACP. The two ports are functioning at the data link layer between the Comware switch and its neighboring switch. The administrator executes the display link-aggregation verbose command and notices the flags shown in the exhibit.

What does this indicate?

- A. The links are up, but both links are blocked by LACP.
- B. The links are up, but are blocked because they are using duplicate operational keys.
- C. The links are up, but LACP negotiation has failed on them.
- D. The links are up, but LACP is not configured on this link aggregation.

Correct Answer: D

QUESTION 2

A company requires switches to use Multiple Spanning Tree Protocol (MSTP) instead of Rapid Spanning Tree Protocol (RSTP), so that the switches can forward traffic on more than one switch-to-switch link. How does the administrator set up the solution to meet this requirement?

- A. Configure every switch with a unique bridge priority in the IST, which is also called spanning tree instance 0.
- B. Ensure that switches use the 802.3t standard costs instead of the legacy costs.

C. Set the same spanning tree cost on all redundant links on a switch.

D. M different VLANs to different instances, and make a different switch root bridge in each instance.

Correct Answer: D

QUESTION 3

Where is priority information stored in an Ethernet frame?

A. 802.1Q VLAN tag

B. IP Precedence field

C. DSCP field

D. TOS tag

Correct Answer: A

QUESTION 4

Refer to the exhibit.

```

<Comware> dir
Directory of cfa0:/

 0 drw-      6985954   Apr 26  2007  21:06:29  logfile
 1 -rw-      3141842   Apr 27  2007  04:37:17  main.app
 2 -rw-         1518   Apr 26  2007  12:05:38  config.cfg
 3 -rw-         2045   May 04  2007  15:50:01  backcfg.cfg
 4 -rwh          428   Apr 27  2007  16:41:21  hostkey
 5 -rwh          572   Apr 27  2007  16:41:31  serverkey
14605 KB total (1955 KB free)

```

```

<Comware> dir /all
Directory of cfa0:/

 0 drw-      6985954   Apr 26  2007  21:06:29  logfile
 1 -rw-      3141842   Apr 27  2007  04:37:17  main.app
 2 -rw-         1518   Apr 26  2007  12:05:38  config.cfg
 3 -rw-         2045   May 04  2007  15:50:01  backcfg.cfg
 4 -rwh          428   Apr 27  2007  16:41:21  hostkey
 5 -rwh          572   Apr 27  2007  16:41:31  serverkey
 6 -rw-     2737556   Oct 12  2007  01:31:44  [old.app]
14605 KB total (1955 KB free)

```

A network administrator is upgrading the operating system on an HP Comware switch. When copying the new image from a TFTP server to the flash of the switch, the process fails because there is not enough flash to store the new operating system. The new operating system is 3.2MB in size. The administrator then executes the commands shown in the exhibit above.

Which action should the administrator perform to solve this problem?

- A. Execute the reset recycle-bin command, and perform the TFTP transfer again.
- B. Execute the clear flash command, and perform the TFTP transfer again.
- C. Reformat flash, and perform the TFTP transfer again.
- D. Execute the delete old.app command, and perform the TFTP transfer again.

Correct Answer: A

QUESTION 5

A mid-sized company purchases HP Intelligent Management (IMC) to manage 500 nodes. In addition to the base platform, the company purchases the UAM, WSM, and NTA modules. Which deployment method should this company

use to install their IMC base platform and modules?

- A. Stand-alone
- B. Distributed
- C. Centralized
- D. Hierarchical

Correct Answer: B

QUESTION 6

A network administrator examines an HP Comware switch that is configured to route packets between VLANs. The switch is configured with multiple routing protocols. All routing protocols have learned of the same destination network. All routing protocols use the default administrative distances.

Which routing protocol does the switch select for the destination network?

- A. EIGRP
- B. Indirect
- C. OSPF
- D. Static route

Correct Answer: C

QUESTION 7

What is true about the community string used for SNMPv1 and SNMPv2c?

- A. The community string encrypts the SNMP message, but does not hash it, providing for data privacy.
- B. The community string hashes the SNMP message, but does not encrypt it, providing for data integrity.
- C. The community string encrypts and hashes the SNMP message, providing for data integrity and privacy.
- D. The community string is like a password transmitted in cleartext, providing no data integrity or privacy.

Correct Answer: D

QUESTION 8

Which command can a network administrator execute on an HP Comware switch to manage configuration files?

- A. delete
- B. startup-default

C. write file

D. write memory

Correct Answer: A

QUESTION 9

A server connects to a port on an HP Comware switch. The network administrator wants to ensure that:

Which statement describes how the administrator can accomplish this?

A. The administrator must manually configure the port as an STP edge port.

B. The administrator can lower the port's root path cost to zero.

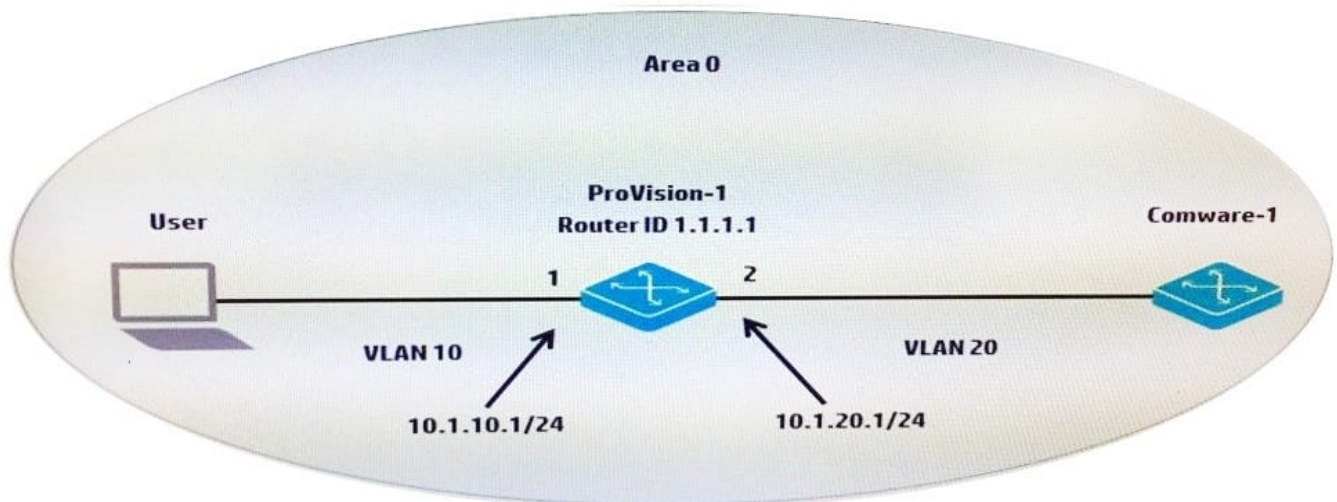
C. The administrator can accept the default behavior of auto-edge.

D. The administrator can configure the port as an MSTP master port.

Correct Answer: B

QUESTION 10

Refer to the exhibit.



A network administrator sets up OSPF in part of the network topology shown in the exhibit. The Comware-1 switch is already configured. The administrator needs to configure ProVision-1 so that:

-OSPF includes VLANs 10 and 20 in the routing process.

-

The router ID of 1.1.1.1 is assigned to the switch.

The ProVision-1 switch can successfully build a neighbor adjacency with the Comware-1 switch. Which configuration should the administrator apply to the ProVision-1 switch to meet these requirements?

A.

```
router-id 1.1.1.1router ospf area 0vlan 10ip ospf area 0vlan 20ip ospf area 0
```

B.

```
router ospf router-id 1.1.1.1area 0 vlan 10area 0 vlan 20enable
```

C.

```
router ospfrouter-id 1.1.1.1area 0 vlan 10area 0 vlan 20
```

D.

```
ip router-id 1.1.1.1router ospfarea 0enablevlan 10 ip ospf area 0vlan 20 ip ospf area 0
```

Correct Answer: D

QUESTION 11

Refer to the exhibits.

Exhibit 1

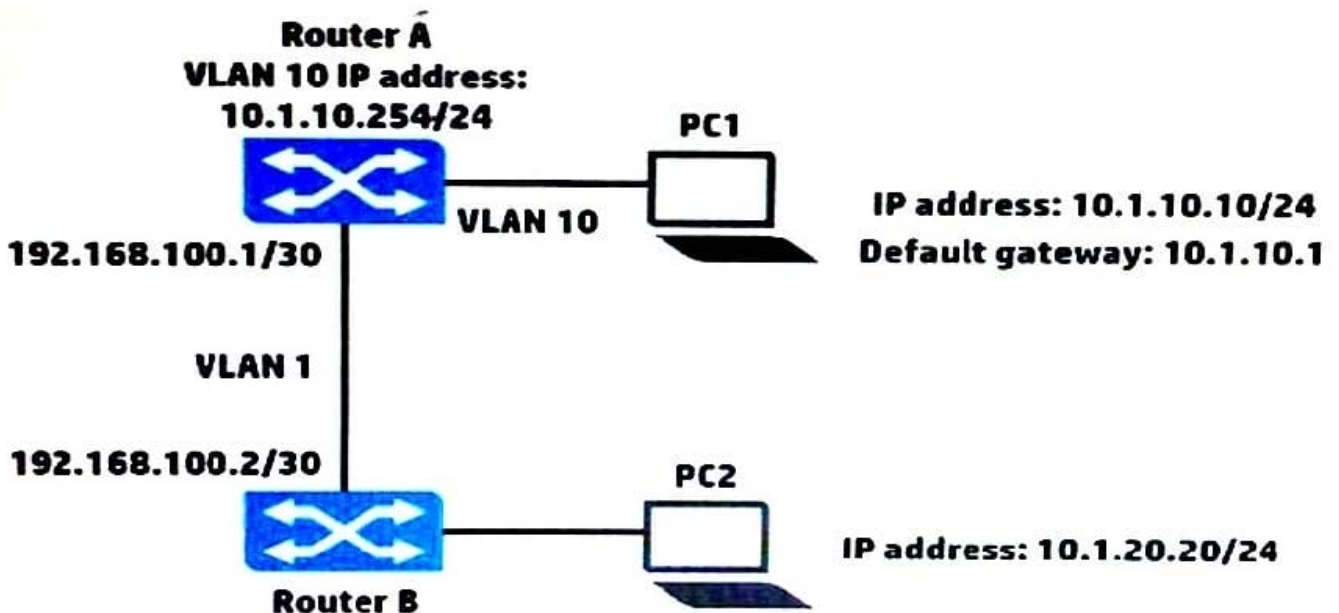


Exhibit 2

Router A IP routing table

Destination Mask	Proto	NextHop	Interface
10.1.10.0/24	Direct	10.1.10.254	vlan10
10.1.20.0/24	Static	192.168.100.2	vlan1
192.168.100.0/30	Direct	192.168.100.1	vlan1

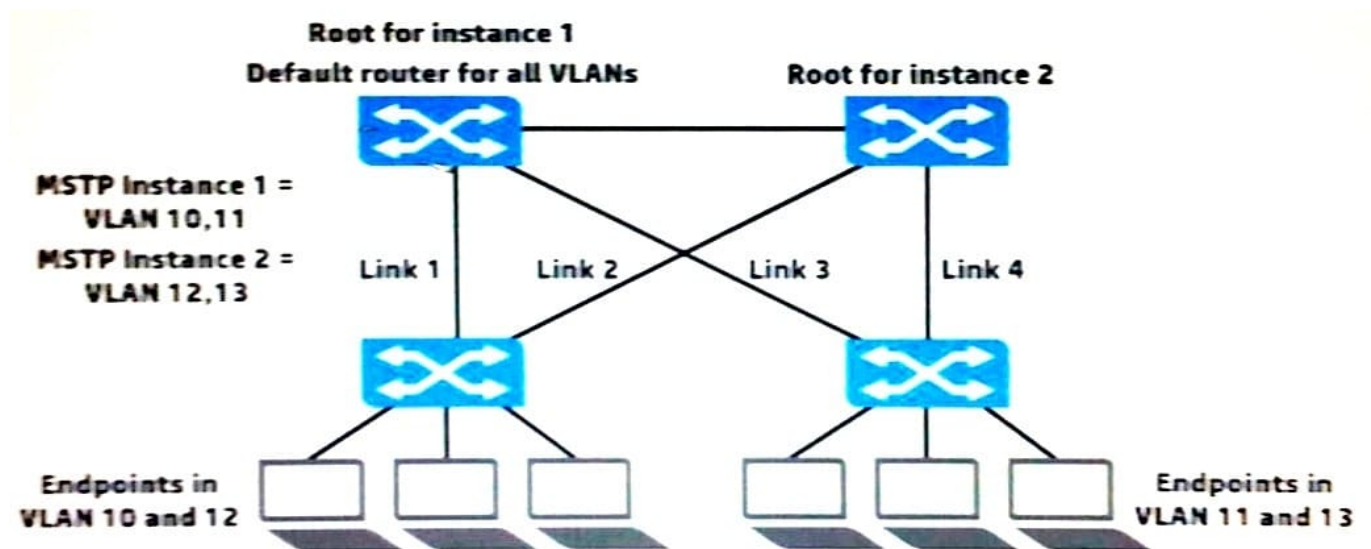
PC1 cannot reach PC2. Based on the exhibits, what could be causing this error?

- A. PC1 has the wrong IP address for its default gateway setting.
- B. Router A has a direct route, instead of a static route, to 10.1.10.0/24.
- C. The next hop address for the 10.1.20.0/24 route is incorrect.
- D. Router A has an invalid subnet mask for the VLAN 1 subnet.

Correct Answer: B

QUESTION 12

Refer to the exhibit.



The network administrator is setting up Multiple Spanning Tree Protocol (MSTP) with the settings shown in the exhibit. All the switches are in the same region. The administrator has requested help determining which VLANs each switch-to-switch link should carry. What is a recommendation for this topology?

- A. To prevent disruptions during link failure, Links 1-4 should carry VLANs 10-13.
- B. To optimize forwarding, Links 1 and 2 should only carry VLANs 10 and 12, and Links 3 and 4 should only carry VLANs 11 and 13.
- C. To ensure compatibility with MSTP, Links 1-4 should be untagged in VLAN 1 and have no tagged VLAN assignments.

D. To optimize forwarding, Links 1 and 3 should only carry VLANs 10 and 11, and Links 2 and 4 should only carry VLANs 12 and 13.

Correct Answer: D