

Exam : **HP0-D14**

Title : Architecting HP
CloudSystem Solutions

Version : Demo

1DRAGDROP

Click the Task button. Match the HP server with the correct hypervisor for use in an HP CloudSystem Matrix solution.

Match the **HP** server with the correct hypervisor for use in an **HP** CloudSystem Matrix solution.

Hypervisors

Virtual Machine Monitors (VMMs) are used to create and manage virtual machines (VMs) on a physical server. They allow multiple operating systems to run on the same hardware, each in its own virtual environment. This is useful for testing, development, and running legacy applications on modern hardware.

Virtual Machine Monitors (VMMs) are used to create and manage virtual machines (VMs) on a physical server. They allow multiple operating systems to run on the same hardware, each in its own virtual environment. This is useful for testing, development, and running legacy applications on modern hardware.

Microsoft Hyper-V is a type 1 hypervisor that allows multiple operating systems to run on the same hardware. It is used to create and manage virtual machines (VMs) on a physical server. It is a good choice for running Windows and Linux operating systems.

HP Servers

HP ProLiant server

HP Integrity and HP ProLiant server

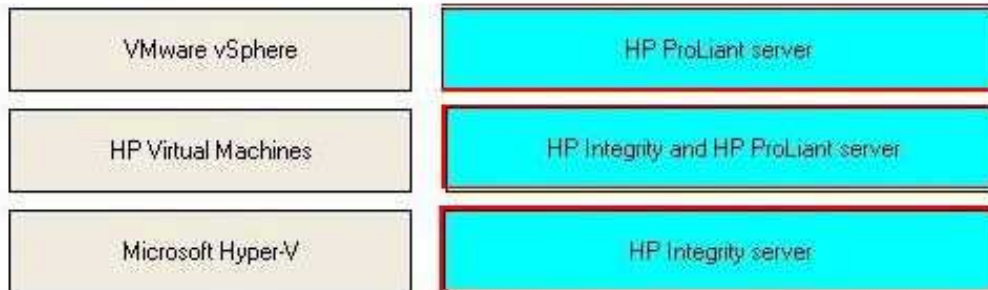
Done

HP Integrity server

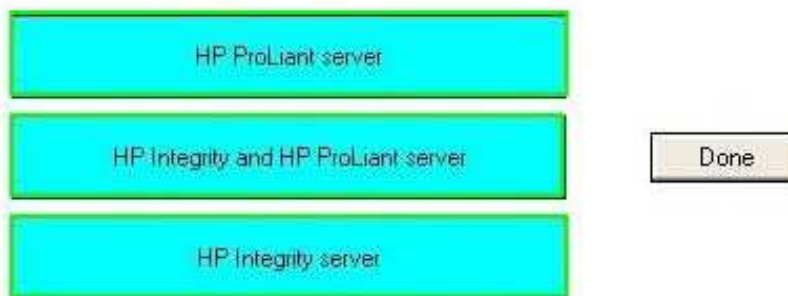
Answer:

Match the HP server with the correct hypervisor for use in an HP CloudSystem Matrix solution.

Hypervisors



HP Servers



2. When HP ProLiant servers are used, which infrastructure provisioning technology is utilized in an HP CloudSystem Matrix solution?

- A. Insight Control server deployment
- B. Ignite-UX
- C. Microsoft System Center
- D. HP SmartStart

Answer: A

3. Which feature is available in all three HP CloudSystem offerings?

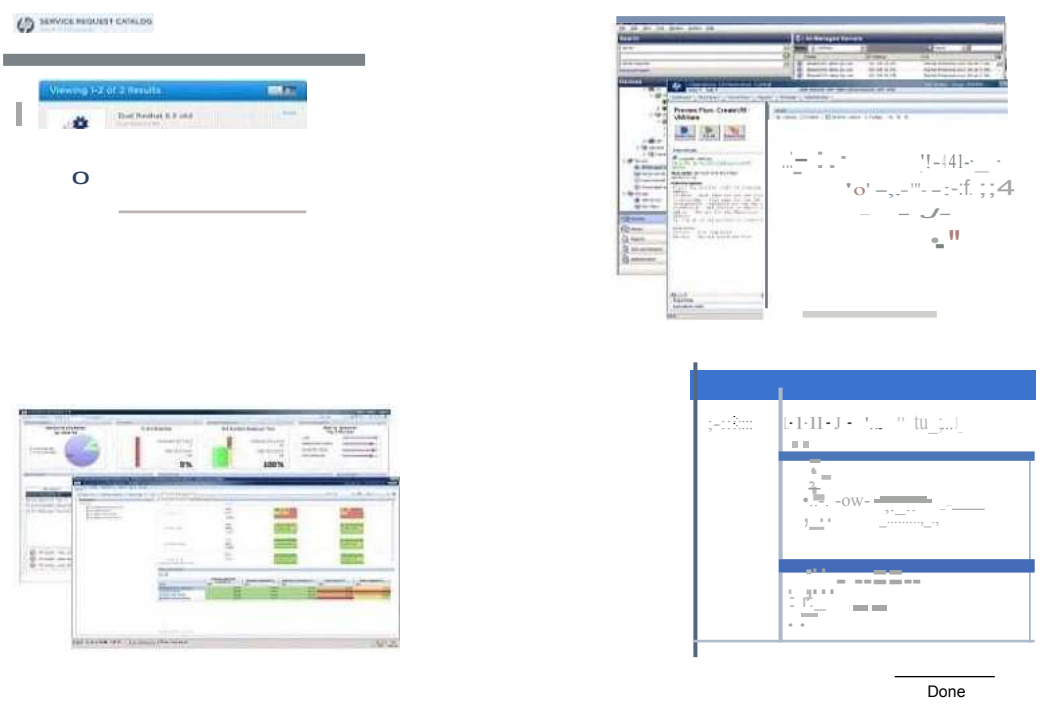
- A. HP Operations Orchestration
- B. HP Advanced Resource Manager
- C. HP Aggregation Platform for SaaS
- D. HP Database and Middleware Automation

Answer: A

4. HOTSPOT

Click the Task button. Click on the portal a customer uses to perform basic service lifecycle management.

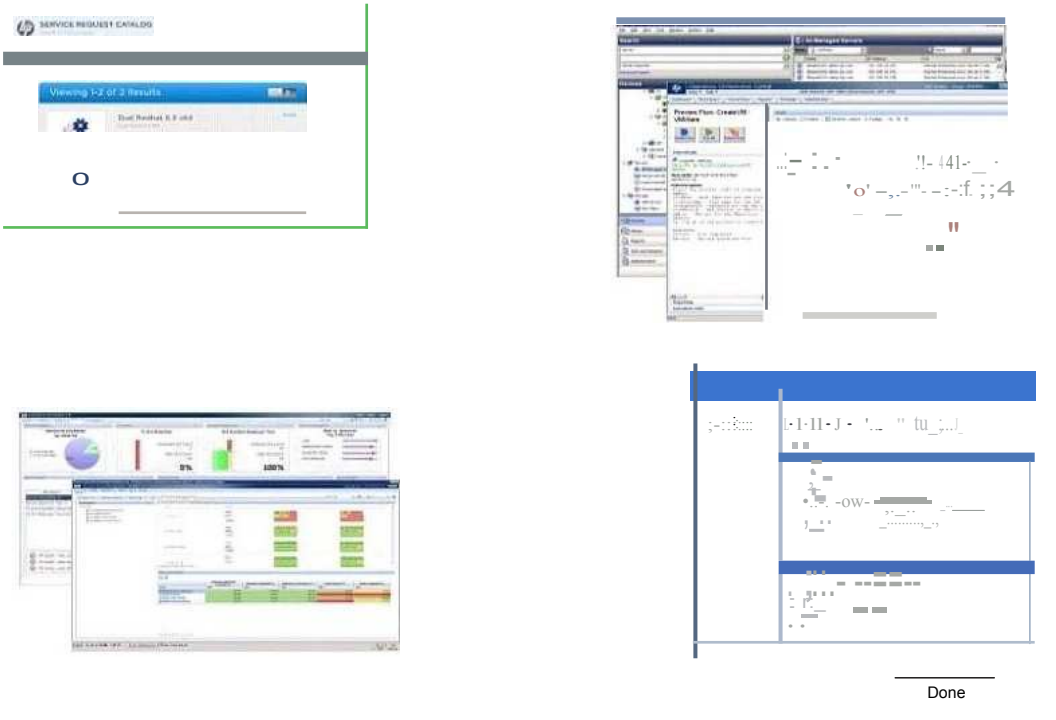
Click on the portal a customer uses to perform basic service lifecycle management.



The screenshot displays a 'SERVICE REQUEST CATALOG' interface. At the top, it shows 'Viewing 1-2 of 2 results' and a search bar. Below this, there are several dashboard panels. On the left, a 'Dashboard' panel features a pie chart and two bar charts. The top right panel shows a 'Process Overview' with a flow diagram. The bottom right panel shows a 'Task' list with columns for 'Task Name', 'Status', and 'Priority'. A 'Done' button is located at the bottom right of the screenshot area.

Answer:

Click on the portal a customer uses to perform basic service lifecycle management.

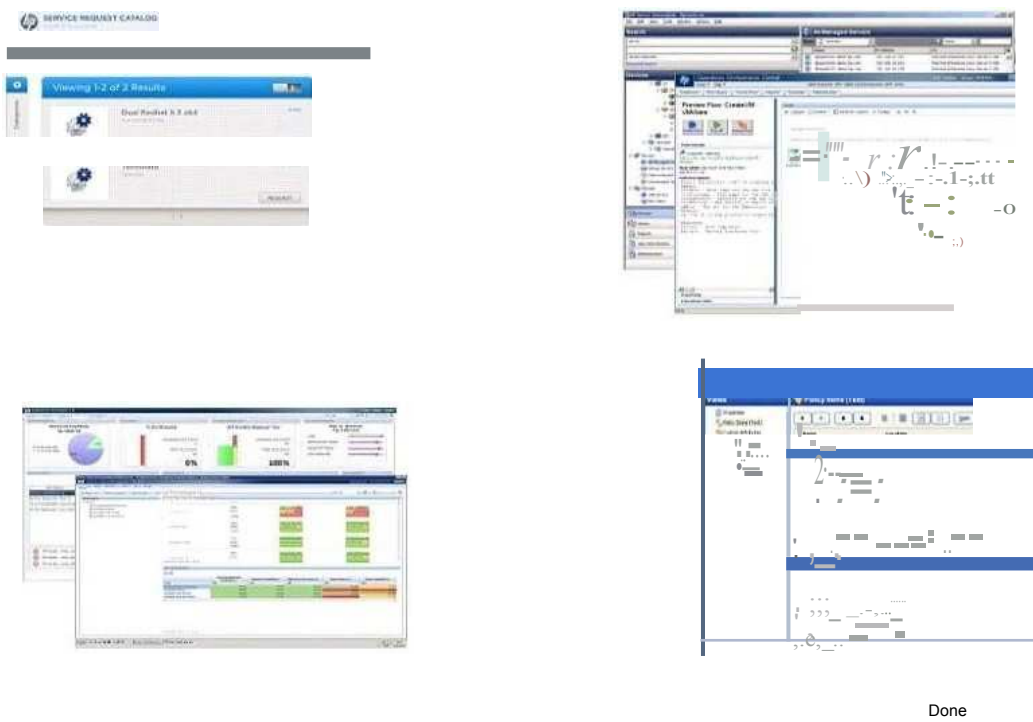


This screenshot is identical to the one above, showing the 'SERVICE REQUEST CATALOG' interface with various dashboards and a 'Done' button at the bottom right.

S.HOTSPOT

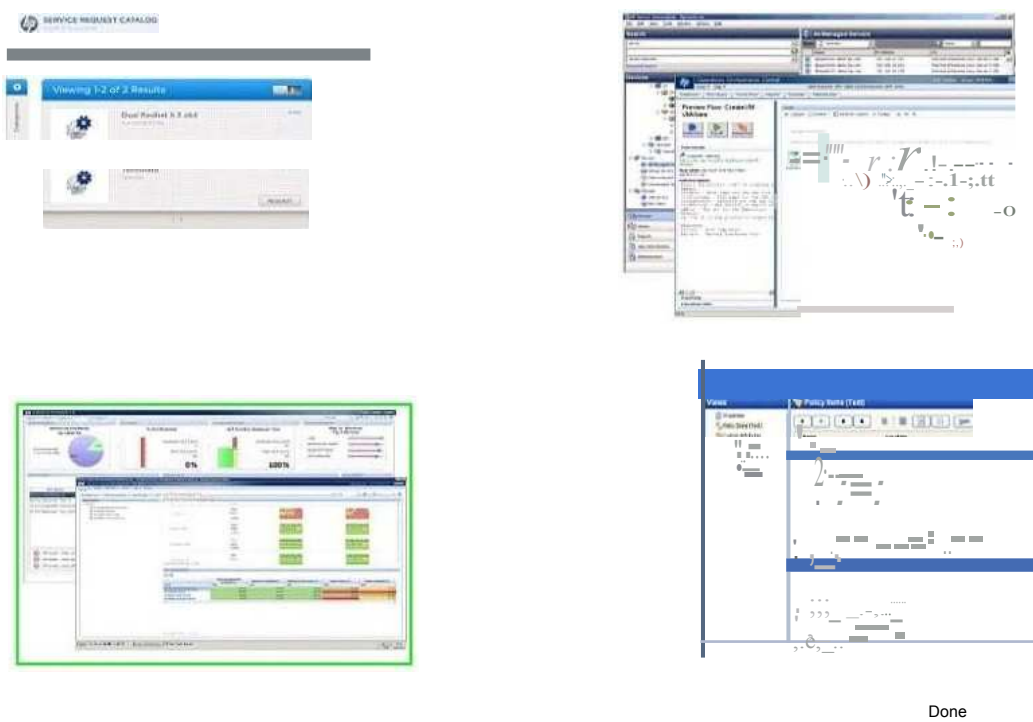
Click the Task button. Click on the portal a customer uses to monitor services, events and processes.

Click on the portl a customer uses to monitor services, events and processes.



Answer:

Click on the portl a customer uses to monitor services, events and processes.



6.1n HP Cloud Service Automation (CSA), which role uses the Provider Management tab in the HP CSA Provider Console to populate the HP CSA Database?

- A. Service Subscriber
- B. Administrator

- C. Resource Manager
- D. Service Publisher

Answer: C

7. Which HP CloudSystem term is used to describe an HP reference configuration?

- A. orchestration
- B. service templates
- C. cloud maps
- D. application lifecycle management

Answer: C

8. In HP Cloud Service Automation (CSA), which management interface is used by a Service Publisher?

- A. HP Operations Orchestration Studio
- B. HP CSA Environment Portal
- C. HP CSA Provider Console
- D. HP Service Request Catalog

Answer: C

9. In HP Cloud Service Automation (CSA), what is the role for a skilled architect who uses HP Operations Orchestration Studio to graphically create the components of a service offering to produce a Service Definition Document?

- A. Service Subscriber
- B. Service Designer
- C. Administrator
- D. Service Publisher

Answer: B

10. In an HP CloudSystem Enterprise, which portal is used for service presentation?

- A. HP Operations Orchestration Studio Designer
- B. HP CSA Admin Portal
- C. HP CSA Foundation Server with Self Service Portal
- D. HP Site Scope Service Portal

Answer: D

Trying our product !




- ★ **100%** Guaranteed Success
- ★ **100%** Money Back Guarantee
- ★ **365 Days** Free Update
- ★ **Instant Download** After Purchase
- ★ **24x7** Customer Support
- ★ Average **99.9%** Success Rate
- ★ More than **69,000** Satisfied Customers Worldwide
- ★ Multi-Platform capabilities - **Windows, Mac, Android, iPhone, iPod, iPad, Kindle**

Need Help

Please provide as much detail as possible so we can best assist you.

To update a previously submitted ticket:



 One Year Free Update <p>Free update is available within One Year after your purchase. After One Year, you will get 50% discounts for updating. And we are proud to boast a 24/7 efficient Customer Support system via Email.</p>	 Money Back Guarantee <p>To ensure that you are spending on quality products, we provide 100% money back guarantee for 30 days from the date of purchase.</p>	 Security & Privacy <p>We respect customer privacy. We use McAfee's security service to provide you with utmost security for your personal information & peace of mind.</p>
---	---	--

Guarantee & Policy | Privacy & Policy | Terms & Conditions

Any charges made through this site will appear as Global Simulators Limited.

All trademarks are the property of their respective owners.

Copyright © 2004-2014, All Rights Reserved.