

100% Money Back
Guarantee

Vendor:EXIN

Exam Code:EX0-113

Exam Name:TMap Next Foundation

Version:Demo

QUESTION 1

See the definition below:

Tests in which the supplying party demonstrates that the product particularly meets the functional and non-functional specifications and the technical design, among other things of which test level is this the definition?

- A. acceptance test
- B. development test
- C. system test

Correct Answer: C

QUESTION 2

What is the definition of valuation?

- A. Evaluation gives insight in the actual and future status of the end product.
- B. Evaluation is a process that gives insight into and advice on quality and related risks.
- C. Evaluation is assessing the interim products in the system development process.

Correct Answer: C

QUESTION 3

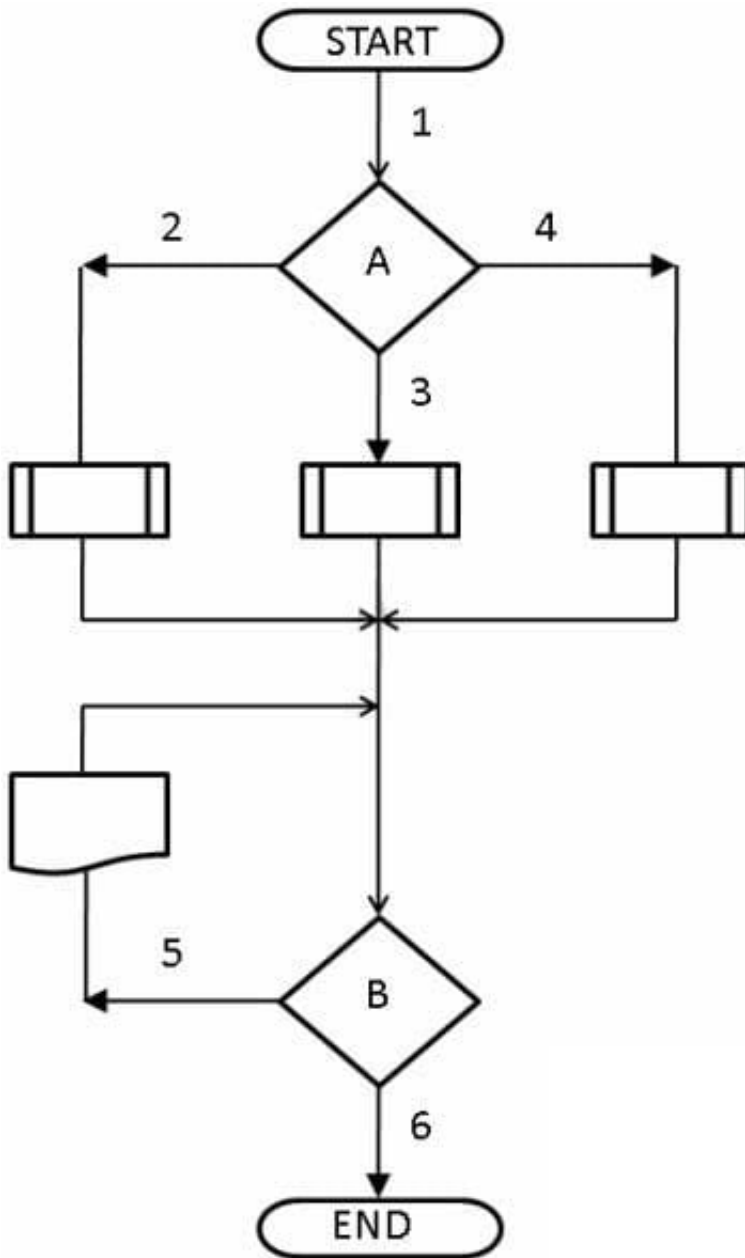
What is an advantage of the BDTM approach?

- A. a test process that can be controlled by the client
- B. a cheaper test process
- C. a risk-free production launch of the tested system

Correct Answer: A

QUESTION 4

See the procedure flow below:



- A. 3
- B. 6
- C. 9
- D. 11

Correct Answer: D

QUESTION 5

The test infrastructure consists of facilities and resources required to conduct testing effectively. Which facility does not belong to the testing infrastructure?

- A. test environments
- B. test design techniques
- C. test tools
- D. workplaces

Correct Answer: B

QUESTION 6

See the following specification:

IF	customer no. > 200 AND (group=330 OR article=action OR customer years >=10)
	TI ICN discount = 10%
	IF customer no. > 500 AND region code = 4
	THEN invoice type = A
	ELSE
	invoice type = C
	ENDIF
ELSE	invoice type = C
ENDIF	

How many test situations can be distinguished for this specification when the coverage type decision points modified condition/decision is used?

- A. 2
- B. 6
- C. 8
- D. 64

Correct Answer: C

QUESTION 7

What is the aim of the activity \\assessing the test basis\\'?

- A. to determine the risk of the various system components
- B. to select the most suitable test design techniques
- C. to determine whether the delivered system components can be tested in a useful manner

D. to establish the testability of the test basis

Correct Answer: D

QUESTION 8

See the specifications below:

```
IF      A AND B
THEN    X=10
ELSE    Y=100
ENDIF
```

```
IF      C OR D
THEN    Z=1000
ENDIF
```

How many test situations are generated if the coverage type decision points with decision coverage (as part of the elementary comparison test) is used?

- A. 3
- B. 4
- C. 6
- D. 8

Correct Answer: B

QUESTION 9

See the specification below in which a decision point is described:

$R = (D \text{ OR } E) \text{ AND } F$

Use of the coverage type decision points modified condition/decision coverage produces the following table with test situations:

$R = (D \text{ OR } E) \text{ AND } F$	1	0
D	101	001
E		001
F	101	100

Which values are missing where the dots are stated (? to make the table complete?

- A. 010
- B. 011
- C. 110
- D. 111

Correct Answer: B

QUESTION 10

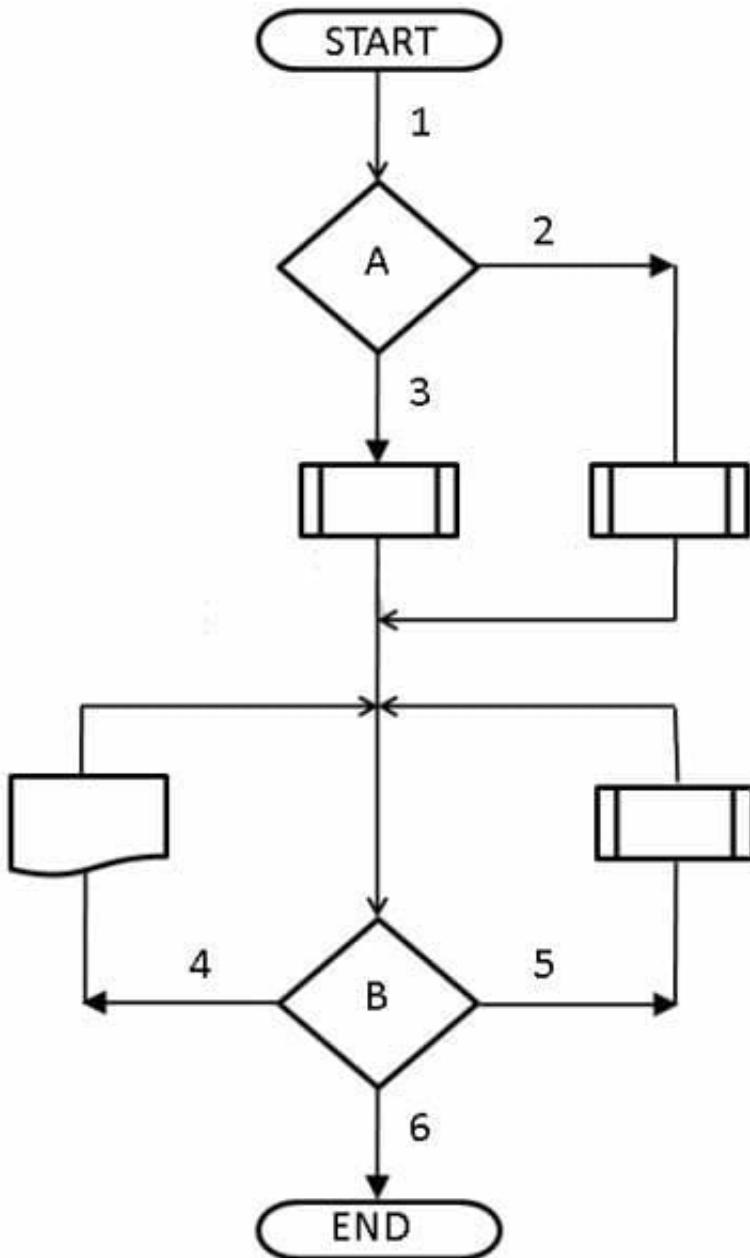
Which TMap phase may be located on the critical path?

- A. Planning and Control
- B. Specification
- C. Execution
- D. Preparation

Correct Answer: C

QUESTION 11

See the procedure flow below:



What is the minimum number of logical test cases are generated by the use of the Process Cycle Test if the coverage type paths test depth level 2 is used?

- B. 6
- C. 8
- D. 14

Correct Answer: B

QUESTION 12

What is the aim of the activity 'assessing the test basis'?

- A. To determine the risk of the various system components
- B. To select the most suitable test design techniques
- C. To determine whether the delivered system components can be tested in a useful manner
- D. To establish the testability of the test basis

Correct Answer: D