

100% Money Back
Guarantee

Vendor: EMC

Exam Code: E20-816

Exam Name: Symmetrix Solutions Expert Exam for
Technology Architects

Version: Demo

Question No : 1

Which type of errors does the TimeFinder Integration Module for Exchange scan for prior to a backup?

- A. -1010
- B. -1018
- C. -1019
- D. -1022

Answer: C

Explanation:

Question No : 2

A customer has the following storage configuration for a specific application:

- Symmetrix VMAX 4 engine with 128 GB cache per engine
- SRDF/A with two 1 Gbps links to remote site
- 4.2 TB of logical volumes configured for SRDF/A replication
- SMC / SPA installed for storage management

The customer is periodically experiencing high response times for the application.

How can the customer use SPA to determine the potential cause of the high response times?

- A. View Directors BE % busy versus Directors FE % busy
- B. View SRDF/A device write pending count versus system write pending count
- C. View Ports FE throughput in Kbps versus Devices Kbps read + Devices Kbps written
- D. View RDF-Group (group number) rewrites per sec

Answer: B

Explanation:

Question No : 3

You have been tasked with gathering performance data for a Microsoft SQL server database that will be migrated to a Symmetrix VMAX. Which Perfmon counter must you measure prior to designing a disk layout?

- A. Physical Disk\Disk Writes/sec
- B. Physical Disk\Avg. Disk sec/Write
- C. Logical Disk\Avg. Disk Bytes/sec
- D. Logical Disk\Disk Write Bytes/sec

Answer: A

Explanation:

Question No : 4

Which Symmetrix VMAX component is involved in measuring sampled average response time?

- A. Front-end ports
- B. Cache
- C. Back-end directors
- D. Front-end directors

Answer: D

Explanation:

Question No : 5

Your customer has security and management concerns with SRDF and Timefinder scripts that are currently running on many production hosts. Symacl will be used to reduce or limit storage management controls to two centralized management servers. How can your customer finish migrating the scripts after symacl is enabled?

- A. The legacy scripts access can be managed by using the unknown group.
- B. The legacy scripts can be managed by creating a legacy access control group.
- C. The legacy script must be migrated to the centralized management server before

enabling symacl.

D. The legacy scripts access can be managed by creating a legacy Access Control Pool.

Answer: A

Explanation:

Question No : 6

Which change in a Symmetrix VMAX workload will typically result in an increase in the read hit rate?

- A. Increase in locality of reference
- B. Increase in the percentage of read I/Os
- C. Increase in the I/O size
- D. Spread the workload over more devices

Answer: A

Explanation:

Question No : 7

A new data warehouse will be hosted on an existing 4-engine VMAX array. The database server has 4 HBAs connected at 8Gb/s. Due to limited SAN switch ports only port 0 on each VMAX FA is connected - also at 8Gb/s.

The workload is expected to require at least 1700MB/s of reads @ 128KB I/O size. It must maintain performance in case of any major component failure in the host, switch or array. Assume that the existing workload on the VMAX does not exceed 350MB/s per port. Also assume that the ports can sustain up to 500MB/s without exceeding 70% utilization.

What is the best practice HBA to FA mapping to ensure the required performance of the data warehouse?

- A. HBA0 -> Engine 3 FA ports HBA1 -> Engine 4 FA ports HBA2 -> Engine 5 FA ports HBA3 -> Engine 6 FA ports
- B. HBA0 -> E0 FA ports HBA1 -> F0 FA ports HBA2 -> G0 FA ports HBA3 -> H0 FA ports

-
- C. HBA0 -> E1 FA ports HBA1 -> F1 FA ports HBA2 -> G1 FA ports HBA3 -> H1 FA ports
D. HBA0 -> FA 7e0, 8e0, 9e0, 10e0 HBA1-> FA 5e0, 6e0, 11e0, 12e0 HBA0 -> FA 7h0, 8h0, 9h0, 10h0 HBA1-> FA 5h0, 6h0, 11h0, 12h0

Answer: B

Explanation:

Question No : 8

Cascaded SRDF is running in SRDF/A mode from the source (R1) site to the disk-based secondary (R21) site. Which SRDF mode is permitted between the R21 and the R2 sites?

- A. Adaptive Copy Disk
- B. Adaptive Copy Write Pending
- C. Synchronous
- D. Asynchronous

Answer: A

Explanation:

Question No : 9

A company uses VMware ESXi Servers and Symmetrix VMAX storage arrays. Which EMC Virtual Storage Integrator feature allows the allocation of new Symmetrix VMAX storage to Virtual Machines from the VMware vSphere client?

- A. Unified Storage Management
- B. Storage Viewer
- C. Storage Pool Management
- D. Symmetrix SRA Utilities

Answer: C

Explanation:

Question No : 10

A company has a VMware vSphere 5.0 ESXi host using NUMA. This host is experiencing poor performance. Which BIOS settings on the ESXi host could help alleviate this performance issue?

- A. Enable Node Interleaving
- B. Disable Node Interleaving
- C. Enable HyperThreading
- D. Disable HyperThreading

Answer: B

Explanation:

Question No : 11

A data warehouse team is reporting poor performance on their batch reports. The database runs on a Solaris host connected to a DMX-4 array with Fibre Channel drives sized to support a sequential read workload. Which metrics in Performance Manager would be useful in diagnosing the performance issue?

- A. I/O per second, KBytes read per second, prefetched tracks per second, Tracks not used per second
- B. Average sampled read time, KBytes read per second, I/O per second, Read hit %
- C. KBytes read per second, Prefetched tracks per second, Read %, Write %
- D. Read hit %, Tracks not used per second, Average sampled read time, I/O per second

Answer: A

Explanation:

Question No : 12

A customer requested a point-in-time replica of their Oracle database. You have architected a TimeFinder/Clone environment to meet the customer's requirements. However, the customer immediately notices that queries against the production database are noticeably slower than normal. Which recommendation helps minimize this performance impact?

- A. Re-create the clone pair using the differential option

-
- B. Create a TimeFinder/Snap session off R2 volumes
 - C. Re-create a new TimeFinder/Clone session off R2 volumes
 - D. Create a new TimeFinder/Clone session using the precopy flag

Answer: D

Explanation:

Question No : 13

Your customer has an Oracle 11g environment that requires a database to be recoverable within a few minutes over an extended distance. Which best practice would you recommend to ensure recoverability on the target side?

- A. Enable Archive Log mode on the production database; enable SRDF/A across the RDF link; split the RDF link (consistent); and apply the archive logs on the target side.
- B. Using SRDF/A across the RDF link, apply the redo logs on the target side after the split
- C. Enable SRDF/S for full source-to-target synchronization. After the RDF split, apply the redo logs to ensure recoverability
- D. Enable SRDF/AR for full source-to-target synchronization at the bunker site

Answer: A

Explanation:

Question No : 14

Your customer just enabled symacl on a pair of existing VMAX arrays with SRDF/S replication configured between the frames. What needs to be done next to enable the local management host to manage the SRDF relationship?

- A. Assign access type Base, RDF to both local management hosts on its corresponding Remote VMAX frames.
- B. No additional access is required, as the local management hosts have full admin rights to the local VMAX.
- C. Assign access type RDF to both local management hosts on its corresponding Remote VMAX frames.
- D. Assign access type RDF to both local management hosts on its corresponding Remote VMAX frames.

Answer: A

Explanation:

Question No : 15

A customer has a Symmetrix VMAX array. Symmetrix back-end utilization is about 70%. They would like to increase their workload by 10%. What would be the expected change in the response time due to the increased workload?

- A. 10%
- B. Greater than 10%
- C. Less than 10%
- D. Remain the same

Answer: B

Explanation:

Question No : 16

An EMC Customer has deployed an ESXi cluster on Symmetrix storage and the deployment of VM Servers is slow. Which technology would speed up the deployment process?

- A. vStorage APIs for Array Integration
- B. PowerPath/VE
- C. TimeFinder Clone
- D. Nexus 1000v

Answer: A

Explanation:

Question No : 17

Which Microsoft utility enables the storage administrator to align sector and track

boundaries for the purpose of increasing storage or device performance for SQL Server 2005?

- A. DiskPart
- B. Master Boot Alignment (MBL)
- C. SQL Server Analyzer
- D. Work Load Analyzer (EMC WLA)

Answer: D

Explanation:

Question No : 18

What defines the time to restart Exchange?

- A. RTO
- B. SLA
- C. RPO
- D. SLP

Answer: C

Explanation:

Question No : 19

A colleague is demonstrating the VMAX virtual LUN migration feature. They configure four test devices to move from FC RAID 5 volumes to SATA RAID 6 volumes and start the migration. The colleague reports the LUN migration moves very slowly and appears to stop during peak processing times.

What is the likely cause of the issue?

- A. The VMAX is reaching system write pending limits.
- B. FAST VP is interfering with virtual LUN migration processes.
- C. They are attempting to migrate too many volumes at once.
- D. The target volumes are the same size as the source volumes.

Answer: A

Explanation:

Question No : 20

When selecting Symmetrix data protection on a VMAX, why would you propose CHAP?

- A. Provides port security authentication for iSCSI connectivity
- B. Prevents encryption at the iSCSI port level
- C. Provides port security authentication for SRDF connectivity
- D. Prevents spoofing at the fiber channel port level

Answer: A

Explanation:

Question No : 21

A customer is implementing Replication Manager to create local clone replicas of their SQL database on their VMAX array. The customer is concerned the RM replica jobs may run for an extended period of time and could cause resource conflicts with other production applications. How can the customer best minimize the impact of the RM replica jobs on the array?

- A. Run the replica jobs simultaneously and during off-peak hours.
- B. Stagger the replica jobs and run them during peak hours.
- C. Run the replica jobs simultaneously and during peak hours.
- D. Stagger the replica jobs and run them during off-peak hours.

Answer: D

Explanation:

Question No : 22

A customer reports their hosts are performing slowly after migration to a new VMAX array.

You review performance data from the VMAX and note the following:

- I/O sizes are 16 KB.
- The front-end director ports are operating at 1 GB auto-negotiate.
- Several front-end director ports are approaching 100% utilization.
- A few director ports show little or no utilization.

What do you advise the customer?

- A.** Rebalance the hosts across all available FA ports and consider upgrading the SAN switch ports to 2 GB or higher.
- B.** Reduce the number of hosts that are accessing the VMAX and consider implementing iSCSI connectivity.
- C.** Rebalance the hosts across all available FA ports and consider setting the front-end director ports to 2 GB or higher.
- D.** Add more HBAs to each host accessing the VMAX and consider setting the host I/O size to 8 KB or less.

Answer: A

Explanation:

Question No : 23

What describes a restartable database in an Oracle environment?

- A.** A copy of a database using consistency technology without putting the database in hot backup mode
- B.** A copy of a database in which transaction logs can be applied to the data files
- C.** A copy of a database in which Oracle data files are always synchronized
- D.** A copy of a database using consistency technology by putting the database in cold backup mode

Answer: A

Explanation:

Question No : 24

A customer has implemented an Oracle application on a VMAX with a mix of Enterprise Flash Drives (EFD) and FC 15K drives. EFD are configured in RAID 5 and FC 15K both in RAID 5 and RAID 1. In terms of IOPS activity, reads are predominant over writes. The customer decided to place a portion of the database in each tier. Which Oracle database object(s) is suitable to be placed on the FC 15K RAID 1 drives?

- A. Data files
- B. Redo logs files
- C. Index files
- D. Temp file

Answer: B

Explanation:

Question No : 25

A colleague configured new thin volumes on an EMC Symmetrix VMAX in preparation for a customer's Exchange 2010 environment. The Exchange environment will be configured on a 4-node Windows 2008 Failover Cluster. The customer's storage environment is already oversubscribed and the new store volumes are quite large. The colleague wants to avoid fully allocating the thin volumes.

How should you format the volumes?

- A. NTFS using quick format.
- B. NTFS using regular format.
- C. FAT32 using regular format.
- D. FAT32 using quick format.

Answer: A

Explanation:

Question No : 26

A customer is implementing Replication Manager to create local clone replicas of their SQL

database on their EMC VMAX array. The customer is concerned the RM replica jobs will run for an extended period of time and cause resource conflicts with other production applications.

Which action do you recommend to minimize the impact of the RM replica jobs on the array?

- A. Stagger the start of each replica job.
- B. Schedule the replica jobs to run during business hours.
- C. Run the replica jobs simultaneously.
- D. Schedule the replica jobs to run during peak hours.

Answer: A

Explanation:

Question No : 27

A customer is using Replication Manager to make local TimeFinder/Clone backups of their Exchange 2010 environment. The customer reconfigured the Exchange environment to place the logs on the L:\ drive and mount the database on L:\SG1DB1. They updated the associated Replication Manager replica job to reflect the change. The customer reports the mount of the database to the backup server now fails. What do you advise the customer?

- A. A separate application set must be configured for the database.
- B. Additional clone targets need to be added to the storage pool.
- C. Nested mount points are not supported with Replication Manager.
- D. The database replica must be part of the same replica job as the logs.

Answer: C

Explanation:

Question No : 28

Four days after configuring FAST-VP on a new VMAX array with EFD, FC and SATA tiers you notice that FAST-VP is moving data, but only 20% of the EFD tier has been consumed. The active FAST-VP policy lists 100% for the EFD tier. What is preventing more data moving to the EFD tier?

-
- A. Pool Reserve Capacity is set to 80%
 - B. Workload Analysis period is set to 7 days
 - C. Pool Reserve Capacity is set to 20%
 - D. DA Processor utilization is too high

Answer: A

Explanation:

Question No : 29

Click on the calculator icon in the upper left corner. A customer would like to add a new database application to their VMAX. This application is expected to produce 3000 I/O per second with 45% read hit and 25% write. The customer expects to use RAID 5 (3+1) on new drives that are not yet utilized. These drives perform 100 SCSI commands per second (read/writes) at 100% utilization.

Assuming drive utilization should not exceed 70%, how many physical drives, excluding hot spares, does the customer need to achieve performance requirements?

- A. 56 disks
- B. 48 disks
- C. 32 disks
- D. 68 disks

Answer: A

Explanation:

Question No : 30

Click on the calculator icon in the upper left corner. A new Oracle database is being deployed on a 4-engine VMAX array. The DBA requests 2TB of usable capacity.

Which configuration will best distribute database workload across the back-end Disk Adapters (DAs) while avoiding host queuing?

- A. 5 x 400GB devices
- B. 2 x 4-way meta devices using 50GB members

-
- C. 1 x 24-way meta device using 100GB members
 - D. 4 x 16-way meta devices using 32GB members

Answer: D

Explanation:

Question No : 31

A company is evaluating SRDF/Star. They are concerned that the RDF daemon represents a single point of failure. How could this concern be addressed?

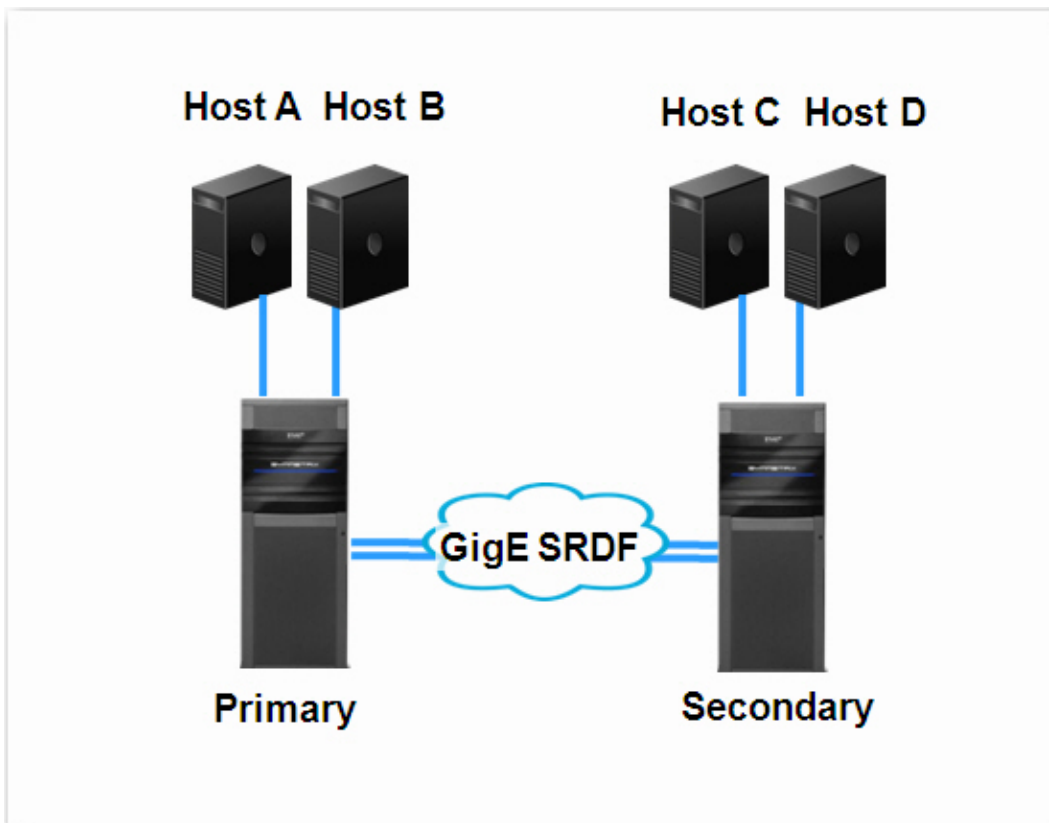
- A. RDF daemon process runs on the Symmetrix array. If the workload site RDF daemon fails, the RDF daemon from one of the other sites will take over.
- B. RDF daemons will be deployed on one management station at each of the three sites. If the workload site RDF daemon fails, one of the RDF daemons from the other two sites will take over.
- C. RDF daemons will be deployed on multiple management stations at the workload site. The RDF daemons will cooperate with each other.
- D. RDF daemon process runs on the Symmetrix array and has built-in redundancy.

Answer: C

Explanation:

Question No : 32

Refer to the exhibit.



Host C is the remote site to an existing production site, Host A in the illustration. Host D is remote site to Host B. The customer would like to have data-at-rest protection for host A and data-in-flight protection for Host B.

Which Symmetrix Security features would be required?

- A. DARE in the primary and secondary sites
- B. PowerPath encryption on Host A, IPsec on host B and D
- C. DARE in the primary site , IPSEC on both Symmetrix
- D. PowerPath Encryption on Host A, IPSEC on both Symmetrix

Answer: D

Explanation:

Question No : 33

Within a VMAX storage environment, what would be a benefit of implementing OFA (Oracle Flexible Architecture) supporting an Oracle database application environment?

-
- A. Enables multiple versions of Oracle to run simultaneously
 - B. Ensures optimal performance across multiple Oracle instances
 - C. Ensures recoverable instances on the target host
 - D. Enables restartable instances after an SRDF split

Answer: A

Explanation:

Question No : 34

A company has a VMware vSphere ESXi 5.0 host. They have been noticing performance issues when they receive bursts of heavy I/O workloads after a relatively low period of CPU utilization. Which measure could be taken in the VM configuration to alleviate this issue?

- A. Decrease monitor.idleLoopSpinUS setting
- B. Increase monitor.idleLoopSpinUS setting
- C. Turn on monitor.idleLoopSpinUS setting
- D. Decrease priority of monitor.idleLoopSpinUS setting

Answer: B

Explanation:

Question No : 35

An SRDF/Star customer wants to move their production from the current workload site to one of the target sites. Which operational step is necessary before executing the symstar halt command?

- A. Ensure that all host I/O is stopped
- B. Ensure that both targets are in the disconnected state
- C. Ensure that both targets are in the isolated state
- D. Execute a symstar switch command

Answer: A

Explanation:

Question No : 36

You have been requested to design a Symmetrix VMAX FAST-VP storage solution. When considering skew, what is a primary performance metric that should be used during the design process?

- A. Device IOPS
- B. FA IOPS
- C. Device MB/sec
- D. Physical Disk MB/sec

Answer: A

Explanation:

Question No : 37

A customer is implementing a new ESXi cluster and will be provisioning 50TB of storage from Symmetrix Pool Storage. The size of the LUNS being presented is 150GB. Based on EMC Best Practices, on how many storage ports should LUNS be presented?

- A. 3
- B. 4
- C. 2
- D. 5

Answer: C

Explanation:

Question No : 38

A Symmetrix VMAX storage array is designed for performance with the following configuration:

What will be the limiting factor for performance?

-
- A. Processor
 - B. Matrix
 - C. Cache
 - D. Disk

Answer: A

Explanation:

Question No : 39

A customer has several Solaris 10 hosts that they will connect via FC to an EMC VMAX. The hosts are all dual-pathed with PowerPath installed. Each host will be assigned 5 volumes on the VMAX. Each volume will be an 8-member metavolume.

What is the actual throttle depth for each Solaris host?

- A. 16
- B. 10
- C. 20
- D. 80

Answer: A

Explanation:

Question No : 40

A large customer has a formal Capacity and Performance Management (CPM) department. This customer's business users describe the environment as both good and challenged. They are acutely aware when there are performance short-falls or insufficient storage resources available. How would you categorize this Performance Management style?

- A. Casually Observant
- B. Actively Observant
- C. Proactive Style
- D. Reactive Style

Answer: D

Explanation:

Question No : 41

Click on the calculator icon in the upper left corner. A customer is implementing an Exchange 2010 environment for 500 users on an EMC Symmetrix VMAX and has the following requirements.

- 1 GB mailbox quota per user.
- Each user sends and receives approximately 125 messages per day.
- The average message size is 65 KB.
- Deleted items will be retained for 14 days.

What is the minimum capacity recommended for each mailbox?

- A. 1.3 GB
- B. 1.0 GB
- C. 1.1 GB
- D. 1.6 GB

Answer: A

Explanation:

Question No : 42

A customer has a new four engine Symmetrix VMAX storage array installed at their site. The array will be the target for a consolidation of three Symmetrix DMX storage arrays. The customer has concerns about required performance for a specific application that currently uses logical volumes from two of the source arrays. All applications that use this storage will have different peak usage times during the day.

How can the customer configure the new VMAX cache to guarantee the best level of service to the specific application?

-
- A. Create a dynamic partition, set a high donation age for the application cache partition
 - B. Create a static partition, set a high donation age for the application cache partition
 - C. Create a dynamic partition, set a low donation age for the application cache partition
 - D. Create a static partition, set a lower write pending limit for the application cache partition

Answer: A

Explanation:

Question No : 43

A customer has a VMAX 1 Engine with 128 GB of cache. The disks are configured in RAID 1 and SRDF is not implemented. The applications on the VMAX perform heavy writes with a ratio of 20/80 (Reads/Writes). Due to continuous rate of writes, the VMAX reaches the Device Write Pending Limit.

What is the most cost effective way to address the problem?

- A. Add cache on the VMAX
- B. Spread write activity to more devices
- C. Migrate from RAID 1 to RAID 5
- D. Migrate from RAID 1 to RAID 6

Answer: B

Explanation:

Question No : 44

Two weeks after configuring FAST-VP on a new VMAX array with EFD, FC and SATA tiers you notice that FAST-VP is no longer moving data to the SATA tier which is 82% full. The active FAST-VP policy lists 100% for the SATA tier. What is preventing more data moving to the SATA tier?

- A. Pool Reserve Capacity is set to 20%
- B. Fast Relocation Rate is set to 5
- C. Pool Reserve Capacity is set to 80%
- D. Too many TDEVs are bound to the FC tier

Answer: A

Explanation:

Question No : 45

A company plans to lay out their Oracle 11g OLTP database across four Symmetrix VMAX LUNs. Which Oracle component can be co-located with the Control Files without impacting performance?

- A. System Tablespace
- B. Data files
- C. Redo Log files
- D. Archive Log files

Answer: A

Explanation:

Question No : 46

A customer implemented an Oracle application on a VMAX with a mix of Enterprise Flash Drives (EFD) and FC 15K drives. EFD are configured in RAID 5 and FC 15K both in RAID 5 and RAID 1. The application is random read intensive. The customer has decided to place a portion of the database in each tier.

Which Oracle database files are suitable to be placed on EFD drives?

- A. Redo logs
- B. Archive logs
- C. Data files
- D. Temp file

Answer: C

Explanation:

Question No : 47

When setting up Symmetrix Access Control, what must be completed before all hosts have been granted Access Control rights (via the Unknown Group)?

- A. The Administrator Group must be setup using SymmWin.
- B. The Administrator Group must be setup using SymCLI.
- C. The license file must be registered using SymACL.
- D. The license file must be registered using SymCLI.

Answer: A

Explanation:

Question No : 48

A customer needs to collect performance data from the HP-UX hosts in the environment. Which collection utility is used?

- A. sar
- B. iostat
- C. perfmon
- D. wrksdsts

Answer: B

Explanation:

Question No : 49

For a 2 engine VMAX, what is the minimum number of Enterprise Flash Drives required to ensure balanced performance across the backend excluding hot spares?

- A. 4
- B. 8
- C. 12
- D. 16

Answer: D

Explanation:

Question No : 50

An existing 2-engine VMAX array has 192 x 450GB 15K Fibre Channel drives in a single Virtual Provisioning pool. Two Linux database hosts are connected to the array and both are running PowerPath.

Host oradb01 is connected to the E0 FA ports on each director and is meeting the customer performance SLA. Host oradb02 is connected to the G0 FA ports on each director - and for the past 3 days this host has been experiencing poor performance during peak activity in the afternoons.

What steps do you take to identify likely bottlenecks?

- A. Check the host for queued I/Os, use SPA to examine I/O size and utilization on the G0 FA ports
- B. Use SMC to check for Virtual Pool alerts, use SPA to measure drive response times
- C. Run iostat -x in order to compare I/O size and read/write ratio of the two hosts
- D. Open a case with EMC Support and upload Oracle Statspack information

Answer: A

Explanation:

Question No : 51

A customer is planning a new Exchange 2010 environment on their EMC VMAX. The customer asks how they can backup volumes containing active mailbox databases. What do you advise the customer?

- A. Use the VSS plug-in that ships with Exchange 2010 or Replication Manager.
- B. Only Replication Manager or a third-party Exchange-aware VSS-based application can be used.
- C. Only the VSS plug-in that ships with Exchange 2010 can be used.
- D. Custom backup scripts will need to be created.

Answer: A

Explanation:

Question No : 52

A customer is planning a new Exchange 2010 environment on their EMC VMAX. The customer asks how they can backup volumes containing passive mailbox database copies. What do you advise the customer?

- A. Only the VSS plug-in that ships with Exchange 2010 can be used.
- B. The VSS plug-in that ships with Exchange 2010 or Replication Manager can be used.
- C. Use Replication Manager or a third-party Exchange-aware VSS-based application.
- D. Custom backup scripts will need to be created.

Answer: C

Explanation:

Question No : 53

A company is in the process of setting up a VMware vSphere 5.0 ESXi host. Which power management setting should be set on the physical host BIOS that the ESXi hypervisor will be installed on?

- A. O/S Controlled Mode
- B. Hardware Controlled Mode
- C. Hypervisor Controlled Mode
- D. User Controlled Mode

Answer: A

Explanation:

Question No : 54

What does basic Symmetrix performance knowledge allow you to do?

- A. Advise customer on configuration issues that might affect workload

-
- B. Install planned microcode upgrades without experiencing downtime
 - C. Plan for power outages
 - D. Provide better pricing on small and mid-range array models

Answer: D

Explanation:

Question No : 55

SRDF/EDP is running in Adaptive Copy Disk mode from the source (R1) site to the secondary (R21) site. Which SRDF mode is permitted between the R21 and the R2 sites?

- A. Adaptive Copy Disk
- B. Adaptive Copy Write Pending
- C. Synchronous
- D. Data mobility

Answer: B

Explanation:

Question No : 56

Host A and Host B are connected to a Symmetrix VMAX, the hosts do not share volumes. The customer plans to implement PowerPath Encryption on Host A. Which action will be required on Host B.?

- A. No action required. Host B will continue to operate normally
- B. Install a new PowerPath Encryption key on Host B
- C. Install the same PowerPath Encryption key on Host B
- D. Stop operations on Host B during the installation

Answer: A

Explanation:

Question No : 57

In Windows 2003 SP1 and greater, which Windows utility is used to properly align partitions to track boundaries?

- A. Disk Management
- B. Diskpar
- C. Diskpart
- D. Symdev

Answer: B

Explanation:

Question No : 58

The customer is looking to deploy a large SQL environment to a ESXi cluster. The main I/O Load of the environment will be OLTP, with a high rate of transactions. Which Raid Type should this environment deploy?

- A. RAID5 striped meta
- B. RAID5 concatenated meta
- C. RAID1 striped meta
- D. RAID1 concatenated meta

Answer: C

Explanation:

Question No : 59

The links between an R1/R2 pair are logically suspended and a half swap is performed on the R2 device. What describes the RDF pair configuration?

- A. Duplicate
- B. Half
- C. Normal
- D. Suspended

Answer: A

Explanation:

Question No : 60

What is a write pending slot in a Symmetrix VMAX?

- A. A cache slot with data that has not yet been destaged to disk
- B. Any cache slot with data written from the host
- C. A cache slot that the host is about to write to
- D. A cache slot that is yet to be replicated to the remote array

Answer: A

Explanation:

Question No : 61

A customer plans to deploy Oracle on their new EMC VMAX. They are concerned about the performance of the redo log files. You recommend isolating these files to their own set of disks and deploying them on striped metavolumes. Why would you recommend striped metavolumes?

- A. Actuator contention is reduced
- B. Random-read response is improved
- C. Spindle queue depth is increased
- D. The write-pending limit is higher

Answer: D

Explanation:

Question No : 62

You have been tasked with gathering performance data for a clustered Microsoft SQL server database that will be migrated to a Symmetrix VMAX. Which Perfmon counter must you measure prior to designing a disk layout?

-
- A. Logical Disk\Disk Writes/sec
 - B. Logical Disk\Avg. Disk sec/Write
 - C. Physical Disk\Avg. Disk Bytes/sec
 - D. Physical Disk\Disk Write Bytes/sec

Answer: A

Explanation:

Question No : 63

You are planning the deployment of a new Symmetrix VMAX array for two different applications. The two applications should not share back-end directors, ports, or disks. How should you allocate the storage for the two applications?

- A. Allocate devices that are managed by different engines
- B. Allocate devices from different disk groups
- C. Allocate devices from different disks
- D. Allocate devices from disks residing on different storage bays

Answer: A

Explanation:

Question No : 64

A customer recently reconfigured their Exchange 2010 environment. They placed the log and system files on the L:\ drive and mounted the mailbox stores on L:\SG1DBMP. They report they updated the associated Replication Manager replica job to reflect the change, but the mounts to the backup server fail. What do you advise the customer?

- A. Additional clone targets need to be added to the storage pool.
- B. A separate replica job must be configured for the mailbox stores.
- C. Log and system files on same volume are not supported.
- D. The mailbox store replica must be part of the same replica job as the log files.

Answer: B

Explanation:

Question No : 65

Your customer decided to implement FAST VP on a two engine VMAX. The requirement is approximately 1.5TB for the Enterprise Flash Drive Tier. Which drive configuration option provides a balanced backend design with the best performance?

- A. sixteen 200GB EFD
- B. eight 400GB EFD
- C. twelve 200GB EFD
- D. twenty 100GB EFD

Answer: A

Explanation:

Question No : 66

A customer is planning an Oracle 11g implementation. You have been assigned to design the Oracle storage architecture. You recommend placing redo logs files on separate drives from other Oracle files. Your customer wants an explanation of this architecture choice. What best describes the reason for this EMC recommendation?

- A. Redo logs write performance can affect the performance of the entire database
- B. Separation ensures that disk failure will not result in losing the entire database
- C. Redo logs on the same drives as the Oracle Data files is not supported
- D. Redo logs read performance can affect the performance of the entire database

Answer: A

Explanation:

Question No : 67

A company has three data centers that they use to run Concurrent SRDF/Star. All links between the workload and synchronous target sites were temporarily unavailable. They are unsure about the sequence of actions during the transient fault recovery process. When do

they need to run the symstar reset command?

- A. After switching the workload to the asynchronous target
- B. After disabling RDF consistency group protection
- C. After the connection between the workload and target sites is reinstated
- D. After setting the RDF mode to Adaptive Copy

Answer: C

Explanation:

Question No : 68

A customer requires a restartable Oracle database up to and including the last committed transaction. Which SRDF best practice solution would you architect?

- A. Maintain a synchronous RDF link between the R1 and R2 at all times. Perform a consistent BCV split off the R2 devices and mount the BCVs to the target host.
- B. Split (consistent) all the BCV devices from the R1s after full synchronization. Mount the Oracle BCV devices to the production host.
- C. Create a point-in-time clone copy of the R2 and deactivate the clone session for recoverability.
- D. Split (consistent) all the BCV devices from the R2s after full synchronization. Then mount the Oracle BCV devices to the production host.

Answer: A

Explanation:

Question No : 69

A company is considering different options in the storage placement of a VMware vSphere 5.0 swap file. When considering placement options, what type of storage would vMotion performance be reduced via the placement of the swap file in that location?

- A. SAS Drives on Local Storage
- B. SAS Drives utilizing NFS
- C. SAS drives utilizing iSCSI
- D. SAS drives utilizing FC

Answer: A

Explanation:

Question No : 70

Prior to creating your Symmetrix VMAX architecture for SQL, you are given a Perfmon Log view containing data for your database LUN. The file contains read and write IOPS collected over the past week, at 3-minute intervals.

Which method should you use to determine the correct IOPS target for calculating the appropriate number of RAID corrected spindles?

- A. 75th percentile
- B. Overall Peak
- C. 90th percentile
- D. Overall Average

Answer: C

Explanation:

Question No : 71

Which data protection benefit does Symmetrix Service Credential provide?

- A. Maintains protection during maintenance operations
- B. Provides service connection encryption
- C. Maintains SRDF data-in-flight protection
- D. Provides user host connection authentication

Answer: A

Explanation:

Question No : 72

A company is using VMware vSphere 5.0 and plans to use the Large Memory Page Size option. What is the page size ESXi assigns to the guest VM?

- A. 2 MB
- B. 8 MB
- C. 4 MB
- D. 4 GB

Answer: A

Explanation:

Question No : 73

You are designing a new Symmetrix VMAX storage array to replace a client's Symmetrix DMX4.

Performance data is captured and examined for the DMX4. During the discovery phase, the client states that their critical business application has increased response times when establishing SRDF for 20 logical volumes. Examination of the current configuration of the logical volumes used for the application reveals the following:

- Ten 4way meta volumes at 200 GB
- Five 8 way meta volumes at 472 GB
- Five logical volumes at 59 GB

Performance analysis shows that the device write pending counts for the five logical volumes at 59 GB are higher than other volumes used by the application.

The client expects migration events to require a complete establishment of their DR environment logical volumes. How should all the devices be configured on the target Symmetrix VMAX storage array?

- A. Meta volumes, minimum 3 members
- B. Virtual provisioned single volumes
- C. Meta volumes, minimum 4 members
- D. Virtual meta volumes, minimum 2 members

Answer: C

Explanation:

Question No : 74

You are designing a Symmetrix VMAX Virtual Provisioning solution for a VMware vSphere environment. What format does EMC recommend when creating a virtual disk for a Virtual Machine?

- A. zeroedthick
- B. eagerzeroedthick
- C. thin
- D. 2gbsparse

Answer: A

Explanation:

Question No : 75

During Symmetrix VMAX performance analysis, you notice that a collection of VMAX devices has a front-end I/O rate that is much lower than its back-end I/O rate. What might be the reason for this?

- A. Devices are RAID 5 protected.
- B. Workload has a high percentage of read hits.
- C. Front-end ports are faster than the back-end ports.
- D. Host is striping the data across all of the devices.

Answer: A

Explanation:

Question No : 76

You are planning a VMAX configuration with FAST VP for a customer's Exchange 2010

environment. The customer requests the database be placed on thin devices and the log files be placed on regular devices. Some of volumes are quite large and will require metavolumes to meet the capacity requirements.

Which metavolume configuration should you use?

- A. Small meta-member size, odd number of members.
- B. Large meta-member size, odd number of members.
- C. Small meta-member size, even number of members.
- D. Large meta-member size, even number of members.

Answer: D

Explanation:

Question No : 77

A new Symmetrix array is being designed for an Oracle data warehouse. The workload is expected to be primarily reads for batch reporting. The customer wants to maximize usable capacity of the array and follow best practices for RAID types to optimize performance. Which RAID level(s) should be used for the control files, data files, redo logs and archive logs?

- A. RAID 5 for data files, RAID 1 for control files, redo logs and archive logs
- B. RAID1 for all data
- C. RAID1 for control and data files, RAID 5 for archive and redo logs
- D. RAID5 for archive logs and data files, RAID1 for control files and redo logs

Answer: A

Explanation:

To Read the [Whole Q&As](#), please purchase the [Complete Version](#) from [Our website](#).

Trying our product !

- ★ **100%** Guaranteed Success
- ★ **100%** Money Back Guarantee
- ★ **365 Days** Free Update
- ★ **Instant Download** After Purchase
- ★ **24x7** Customer Support
- ★ Average **99.9%** Success Rate
- ★ More than **69,000** Satisfied Customers Worldwide
- ★ Multi-Platform capabilities - **Windows, Mac, Android, iPhone, iPod, iPad, Kindle**

Need Help

Please provide as much detail as possible so we can best assist you.

To update a previously submitted ticket:



 One Year Free Update <p>Free update is available within One Year after your purchase. After One Year, you will get 50% discounts for updating. And we are proud to boast a 24/7 efficient Customer Support system via Email.</p>	 Money Back Guarantee <p>To ensure that you are spending on quality products, we provide 100% money back guarantee for 30 days from the date of purchase.</p>	 Security & Privacy <p>We respect customer privacy. We use McAfee's security service to provide you with utmost security for your personal information & peace of mind.</p>
---	---	--

[Guarantee & Policy](#) | [Privacy & Policy](#) | [Terms & Conditions](#)

Any charges made through this site will appear as Global Simulators Limited.

All trademarks are the property of their respective owners.

Copyright © 2004-2015, All Rights Reserved.