

100% Money Back
Guarantee

Vendor: EMC

Exam Code: E20-611

Exam Name: CLARiiON Installation and Troubleshooting
Specialist

Version: Demo

Question No : 1

On a CLARiiON CX4-480 array what is the maximum number of drives supported on each back-end loop?

- A. 90
- B. 120
- C. 240
- D. 480

Answer: B

Question No : 2

Which operating systems support EMCRemote?

- A. Windows Server 2000, Windows Vista
- B. Windows Server 2008, Windows Server 2000
- C. Windows XP Professional, Windows Server 2000
- D. Windows XP Professional, Windows Vista

Answer: C

Question No : 3

When interconnecting DAE3Ps what is the maximum supported cable length between them?

- A. 2 meters
- B. 4 meters
- C. 8 meters
- D. 12 meters

Answer: C

Question No : 4

How many fans are in a CX4-960 fan pack?

-
- A. 1
 - B. 2
 - C. 3
 - D. 4

Answer: A

Question No : 5

During a CLARiiON conversion the Upgrade Wizard does not start automatically when the SP is booted to the Utility Partition.

What is the most common problem and resolution?

- A. The correct Conversion Image NDU package was not installed and the upgrade will need to be completed manually without the Upgrade Wizard.
- B. The correct Conversion Image NDU package was not installed and the original hardware configuration will need to be swapped back so the correct Conversion Image can be installed.
- C. The new hardware is not compatible and the original hardware configuration will need to be swapped back until compatible hardware is shipped to the site.
- D. There is no fifth vault drive and the original hardware configuration will need to be swapped back so the fifth drive can be added to proceed with the conversion.

Answer: B

Question No : 6

How many back-end activities have to occur when modifying a single sector on a RAID 5 LUN in a CLARiiON CX4 series array?

- A. One (1) read, one (1) write
- B. One (1) write
- C. Two (2) reads, one (1) write
- D. Two (2) reads, two (2) writes

Answer: D

Question No : 7

What are the four main sections contained in the Interactive Installation Guide (IIG)?

- A. Installation, Connect New Server, Software Assistant, Support
- B. Installation, Connect New Server, Software, Support
- C. Installation, Initialize Storage Domain, Software, Select Storage System
- D. Installation, Select Storage System, Software, Support

Answer: B

Question No : 8

Which host failover software is supported with a Non-Disruptive Upgrade (NDU)?

- A. HP-UX PVLlinks, Linux native failover, Microsoft Windows with PowerPath
- B. HP-UX PVLlinks, Solaris with VERITAS DMP, Microsoft Windows with PowerPath
- C. Linux native failover, HP-UX PVLlinks, Solaris with VERITAS DMP
- D. Microsoft Windows with PowerPath, Linux native failover, Solaris with VERITAS DMP

Answer: A

Question No : 9

Your customer has asked you to explain the RAID 5 parity and striping functions on a CX4 series array. How many stripes will you tell them occur on a disk before the parity block will rotate to the next disk?

- A. 4
- B. 8
- C. 16
- D. 32

Answer: B

Question No : 10

Using EMC best practices what is the percentage of memory that should be allocated for read cache?

- A. 10%
- B. 15%

-
- C. 20%
 - D. 30%

Answer: C

Question No : 11

In FLARE release 24, what are the three tabs in an Enterprise Storage window?

- A. General, Hosts, and Monitors
- B. Hosts, Monitors, and Software
- C. Hosts, Monitors, and Storage
- D. Monitors, Software, and Storage

Answer: D

Question No : 12

Your customer wishes to zone a Windows host HBA to Storage Processor B port 9 on a CX4-960 array.

Which WWPN should be included in the zone?

- A. 50:06:01:61:BB:24:02:07
- B. 50:06:01:69:BB:24:02:07
- C. 50:06:01:61:BB:20:02:07
- D. 50:06:01:69:BB:20:02:07

Answer: B

Question No : 13

When retrieving an SPCollect from a CX4 array, what is the location of the files shown in the file transfer manager of the storage processor?

- A. C:\CLARiiON\logs
- B. C:\dumps
- C. C:\logs
- D. C:\Navisphere\logs

Answer: B

Question No : 14

Your customer is serially connected using PPP from a management station to an array. What is the maximum baud rate that can be used for a dial-up networking environment?

- A. 9,600
- B. 19,200
- C. 38,400
- D. 115,200

Answer: B

Question No : 15

Which two services are started automatically, after installing CLARAlert?

- A. ConnectEMC, Navisphere Manager
- B. EMCRemote, Navisphere Manager
- C. Navisphere Agent, ConnectEMC
- D. Navisphere Agent, EMCRemote

Answer: C

Question No : 16

How is Write cache mirrored in a CLARiiON array?

- A. Write data is mirrored through the SP agent over the service port connections.
- B. Write data is received by the target SP and copied to the peer SP through the CMI bus.
- C. Write data is sent to each SP from the host and compared through the CMI bus.
- D. Write data is sent to the target LUN and read back to the peer SP.

Answer: D

Question No : 17

The output file of an SPCollect generated from CAP2 is in which format?

- A. doc
- B. html
- C. xml
- D. zip

Answer: C

Question No : 18

Which GUI utility in CAP2 displays storage processor event logs?

- A. EIP
- B. HEAT
- C. SPLAT
- D. SWAT

Answer: C

Question No : 19

Which IP address is required when configuring Centralized monitor Email-Home during the CLARAlert ConnectEMC installation?

- A. EMC ControlCenter Server
- B. ESRS Gateway
- C. Portal System
- D. SMTP Server

Answer: D

Question No : 20

What additional reference material is included in the CLARiiON Procedure Generator?

- A. CLARiiON Array Pocket Reference Document
- B. CLARiiON Best Practices Reference Document
- C. CLARiiON Default Configurations Document
- D. CLARiiON Features and Functionality Document

Answer: A

Question No : 21

How many SPE power supplies are needed to start Write caching on a CLARiiON CX3-20?

- A. 1
- B. 2
- C. 3
- D. 4

Answer: B

Question No : 22

There is a power supply faulted on each of the SPs of a CX4-480.

Does the array have write cache enabled and is the array in High Availability mode?

- A. The array does not have write cache enabled and is not in High Availability mode.
- B. The array does not have write cache enabled but is in High Availability mode.
- C. The array has write cache enabled and is also in High Availability mode.
- D. The array has write cache enabled but is not in High Availability mode.

Answer: C

Question No : 23

Click the Exhibit Button.

On the CX4-960 power cabling diagram, what does "a" depict?

- A. The input power to the first disk-array enclosure (DAE) from the standby power supply (SPS) units
- B. The input power to the remaining disk-array enclosure (DAE) from the Power Distribution Unit (PDU)
- C. The input power to the standby power supply (SPS) units from the power distribution units (PDUs)

D. The input power to the storage processor enclosure (SPE) power supplies from the standby power supply (SPS) units

Answer: C

Question No : 24

When performing a proactive drive replacement on CLARiiON CX4 series, what is the preferred method?

- A. Reseat the suspect drive to see if the errors cleared
- B. Run Background Verify to determine if there are any uncorrectable errors
- C. Use Navisphere Manager to access the suspect drive and initiate a copy to hot spare
- D. Use the Navisphere Service Taskbar Disk Replacement Utility

Answer: C

Question No : 25

On CLARiiON Fibre Channel arrays, which type of protection is used on the FLARE Db?

- A. Double mirrored
- B. RAID 3
- C. RAID 5
- D. Triple mirrored

Answer: D

Question No : 26

Which parity calculation method does RAID 5 use?

- A. Even
- B. Odd
- C. XNOR
- D. XOR

Answer: D

Question No : 27

Your customer has discovered that the boot images for both SPA and SPB in their CX3-80 are corrupt and will need re-imaging. The recovery image file was not loaded to the array during the last software upgrade.

What is the file extension for the "reactive" recovery file?

- A. ENA
- B. MIF
- C. NDU
- D. PBU

Answer: B

Question No : 28

Under which failure scenario, with FLARE 28, will the array maintain cache?

- A. Multiple SPB power supplies on CX4-120
- B. Multiple vault drives on CX4-240
- C. Multiple standby power supplies (SPS) on CX4-480
- D. Multiple power supplies on CX4-960

Answer: A

Question No : 29

Your customer has MirrorView installed and configured on their CX4-480, and they are installing two additional FE UltraFlex I/O modules in the array.

Will the MirrorView ports on the array need to be reconfigured and moved to the highest numbered ports on the new modules?

- A. No. The CLARiiON will automatically move the ports to the highest numbered port on the array.
- B. No. The ports will not need to be reconfigured; the ports will stay the same.
- C. Yes. The ports will need to be auto-assigned by the SPs and moved accordingly.
- D. Yes. The ports will need to be reconfigured in Navisphere Manager to the highest port numbers.

Answer: B

Question No : 30

Which process, internal to FLARE, will help to minimize the possibility that a disk defect will remain undetected?

- A. RLSParser
- B. Scrubber
- C. SNiFFER
- D. Zero disk

Answer: C

Question No : 31

When is processor throttling used in a CX4-960?

- A. After a total power loss
- B. Before write cache is configured for the first time
- C. During a multiple fan fault
- D. When the cache vault is "broken"

Answer: C

Question No : 32

When is it unsafe to remove a CX4 series storage processor (SP)?

- A. When no system LED is lit
- B. When the system Amber LED is lit
- C. When the system Green LED is lit
- D. When the system White LED is lit

Answer: D

Question No : 33

What is NOT a valid feature of proactive hot sparing?

- A. A Copy to Hot Spare operation can take place only on a redundant RAID group.
- B. The Copy to Hot Spare can only be initiated manually by qualified support personnel via GUI or SecCLI.
- C. There can be multiple Copy to Hot Spare operations taking place as long as they are on different RAID groups.
- D. There can be only one active Copy to Hot Spare operation per RAID group.

Answer: B

Question No : 34

Which CX4 array model has a maximum number of one back-end Fibre Channel port per storage processor (SP)?

- A. CX4-120
- B. CX4-240
- C. CX4-480
- D. CX4-960

Answer: A

Question No : 35

How many BE ports does a CX4-960 array with the expansion option have?

- A. 4
- B. 8
- C. 16
- D. 32

Answer: C

Question No : 36

What is the maximum write cache value for a CX4-480 array?

- A. 2.5 GB
- B. 3.0 GB

- C. 4.5 GB
- D. 6.0 GB

Answer: C

Question No : 37

Click the Exhibit button

Your customer has reported back-end issues with their FC4700 array. You have run Fibre Backend Isolation (FBI) and are analyzing the report.

Which is the most likely failing disk?

Load File: C:\clarioni_troubleshooting\case studies\fbi cases\case_02.rls
 RLS Common Format file (04/14/2005 01:40:27)
 Interface: LAN/PPP Host Name: 10.128.24.226
 Bus 1

Port A Statistics:

	Link Failure Count	Loss of Synchronization Count	Invalid Transmission Count	Invalid CRC Count	LIP F7 Initiator Count	LIP F7 Receiver Count	LIP F8 Initiator Count	LIP F8 Receiver Count
CRU149 (Bus:1 Enc:2 Slot:9)	0	0	0	0	0	0	0	0
CRU147 (Bus:1 Enc:2 Slot:7)	0	0	0	0	0	0	0	0
CRU145 (Bus:1 Enc:2 Slot:5)	0	0	0	0	0	0	0	0
CRU143 (Bus:1 Enc:2 Slot:3)	0	0	0	0	0	1	0	0
CRU141 (Bus:1 Enc:2 Slot:1)	0	0	0	0	0	0	0	0
CRU159 (Bus:1 Enc:3 Slot:9)	0	0	0	0	0	0	0	0
CRU130 (Bus:1 Enc:3 Slot:9)	0	1	3	0	2195	18439	0	0
CRU157 (Bus:1 Enc:3 Slot:7)	0	0	0	0	0	1	0	0
CRU155 (Bus:1 Enc:3 Slot:5)	0	0	0	0	0	1	0	0
CRU153 (Bus:1 Enc:3 Slot:3)	0	0	0	0	0	1	0	0

- A. CRU130
- B. CRU141
- C. CRU143
- D. CRU159

Answer: D

Question No : 38

Which tool must be used to associate the Host LUN Number (HLU) to the FLARE LUN Number (FLU)?

- A. CAP2
- B. HEAT
- C. SPLAT
- D. TRiiAGE

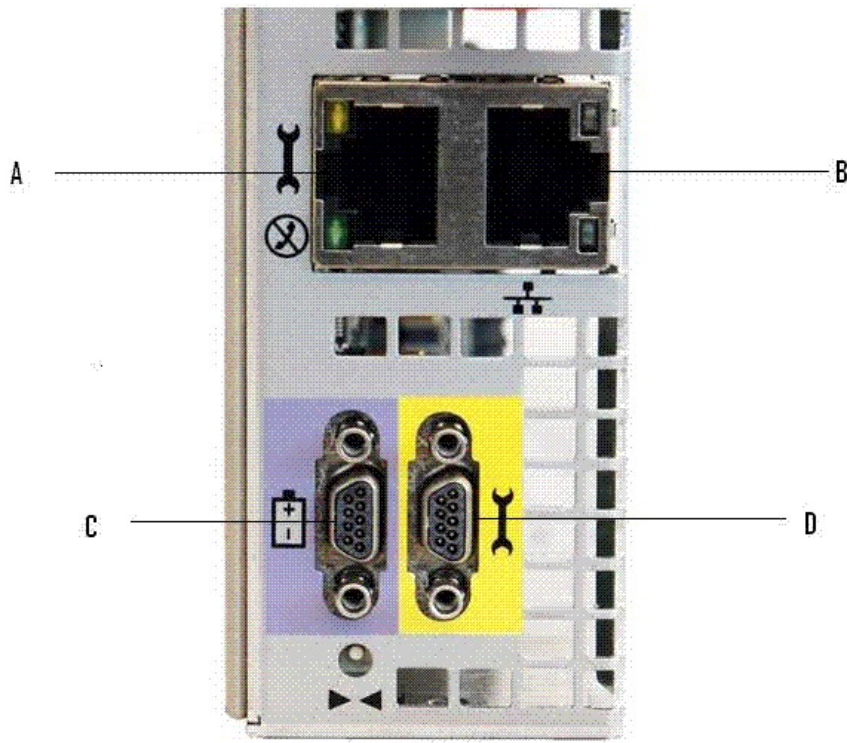
Answer: D

Question No : 39

Click the Exhibit button.

You have been tasked with performing a Non-Disruptive Upgrade on Your customer's CX4 array. You plan to use Navisphere Service Taskbar (NST) on your service laptop. The customer has informed you that they must maintain management access to the CLARiiON during this procedure.

Which port should be used?



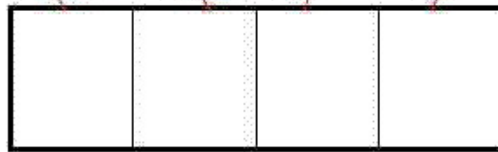
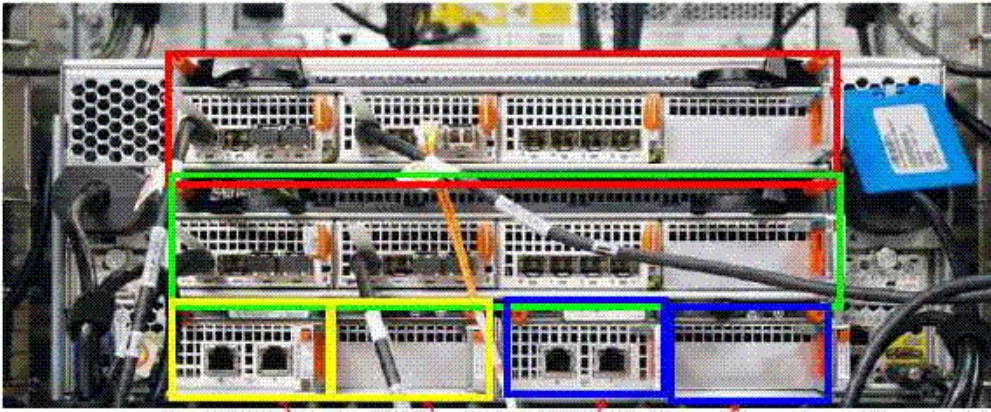
- A. A
- B. B
- C. C
- D. D

Answer: A

Question No : 40

Click the Exhibit button.

In the illustration, how should the I/O Annex correspond to the SPs from left to right?



- A. SPA, SPA, SPB, SPB
- B. SPA, SPB, SPA, SPB
- C. SPB, SPA, SPB, SPA
- D. SPB, SPB, SPA, SPA

Answer: D

Question No : 41

A Customer Engineer (CE) is sent to reset Storage Domain Security at a customer site.

What form of communication does the Customer Engineer need to use to reset the Storage Domain Security?

- A. HyperTerminal
- B. Procomm
- C. Serial PPP
- D. Telnet

Answer: C

Question No : 42

Which "Magic Byte" is used by Background Verify to detect incomplete writes of a full stripe?

-
- A. Checksum
 - B. shedstamp
 - C. timestamp
 - D. writestamp

Answer: C

Question No : 43

Your customer has experienced problems viewing target LUNs from one of their Windows hosts. The Support Center has requested a data collection.

Which EMC supplied utility should be run to collect the host data?

- A. EMCGrab
- B. EMCRemote
- C. EMCReports
- D. SPCollect

Answer: C

Question No : 44

You are working on a CLARiiON where one DAE is streaming 801 errors. You are unable to trace exactly what drive or drives are causing the problem.

Which tool would be best to trace down the problematic drive or drives?

- A. Background Verify
- B. CAP2
- C. FBI
- D. SPLAT

Answer: C

Question No : 45

Your customer's CX4-240 array is experiencing boot problems with SPA. You observe that

the fault LED for SPA is blinking amber at the rate of once every four seconds (1/4 Hz).

Where did the boot process fail?

- A. BIOS
- B. FLARE driver start
- C. OS boot
- D. POST

Answer: A

Question No : 46

Which type of SCSI error is a 0x801?

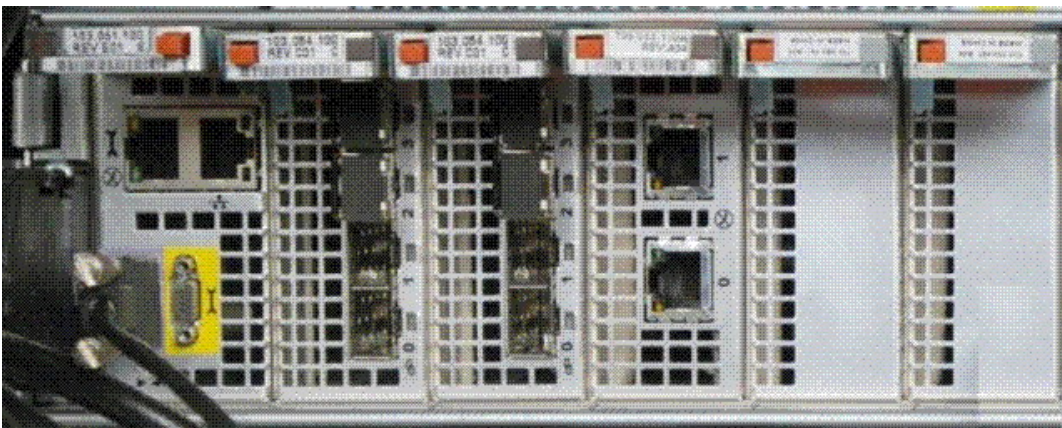
- A. Hard
- B. Informational
- C. Soft
- D. Uncorrectable

Answer: C

Question No : 47

Click the Exhibit button.

In which slot is the iSCSI module installed?



- A. 0
- B. 1

-
- C. 2
 - D. 3

Answer: C

Question No : 48

Optical cables are required for which connection(s)?

- A. Fibre Channel back-end connections and all iSCSI connections
- B. Fibre Channel back-end connections to disk-array enclosures (DAE)
- C. Fibre Channel front-end host connection to disk-array enclosures (DAE)
- D. Fibre Channel front-end host connection to storage processors (SP)

Answer: D

Question No : 49

A disk in a RAID 5 set has failed. While performing the rebuild to the hot spare a permanent CRC sector error is encountered on one of the remaining disks in the RAID group.

What is the result of this occurrence?

- A. The affected data will be lost even after the failed disk is replaced.
- B. The affected data will be reconstructed by the SP and written to the hot spare.
- C. The affected data will be unavailable until the failed disk is replaced.
- D. The peer SP will attempt to read the sector.

Answer: A

Question No : 50

When booting to the utility partition on a CLARiiON storage processor using a serial connection, what are the HyperTerminal parameters?

- A. Bits per second: 115200
Data bits: 8
Parity: none

Stop bits: 1
Flow control: hardware
B. Bits per second: 19200
Data bits: 8, Parity: none
Stop bits: 1
Flow control: hardware
C. Bits per second: 57600
Data bits: 8
Parity: none
Stop bits: 1
Flow control: Xon/Xoff
D. Bits per second: 9600
Data bits: 8
Parity: none
Stop bits: 1
Flow control: none

Answer: D

Question No : 51

In which area of the CLARiiON array is the ".pbu" file(s) stored?

- A. Boot image
- B. FLARE database
- C. PSM
- D. Write cache

Answer: C

Question No : 52

How many bytes are contained in a logical sector on a SATA disk drive in a CLARiiON array?

- A. 512
- B. 520
- C. 524
- D. 540

Answer: B

Question No : 53

What does the low priority, always running, Sniff Verify operation check?

- A. A LUN
- B. The bound space in a RAID group
- C. The entire bound space in an array
- D. The specified sectors

Answer: C

Question No : 54

The SPA event log of a CLARiiON CX4 series array has displayed the error message:

09/26/08 18:10:49 Bus0 Enc1 Dsk8 820 Soft Media Error 05 0 0

Which explanation should be provided to the customer?

- A. This represents a media error that was corrected by the ATA disk drive module.
- B. This represents a media error that was corrected by the Fibre Channel disk drive module.
- C. This represents a media error that was corrected by the storage processor.
- D. This represents a media error that was not correctable.

Answer: C

Question No : 55

Where would a Customer Engineer find documentation explaining Test and Acceptance Criteria (TAC)?

- A. CLARiiON Procedure Generator
- B. E-Lab Navigator
- C. Enhanced Installation Procedure (EIP)
- D. Powerlink

Answer: A

Question No : 56

Which utility is required in order for Test and Acceptance Criteria (TAC) to function?

- A. EMCReports
- B. Navisphere CLI
- C. Navisphere Manager
- D. NST

Answer: D

Question No : 57

One of the rules fails in Navisphere Service Taskbar (NST) during a FLARE upgrade. You are prompted for a password to override this individual failed rule.

Which password is used to override a failed rule?

- A. clariion!
- B. MESSNER
- C. siw
- D. SYR

Answer: C

Question No : 58

When performing a FLARE Code NDU on a CLARiiON array, according to the procedure generator, which item needs to be verified with the customer before proceeding?

- A. All hosts are online and can see the storage.
- B. I/O has been halted to the CLARiiON array.
- C. Write cache has been enabled.
- D. All hosts have HA connectivity.

Answer: D

To Read the [Whole Q&As](#), please purchase the [Complete Version](#) from [Our website](#).

Trying our product !

- ★ **100%** Guaranteed Success
- ★ **100%** Money Back Guarantee
- ★ **365 Days** Free Update
- ★ **Instant Download** After Purchase
- ★ **24x7** Customer Support
- ★ Average **99.9%** Success Rate
- ★ More than **69,000** Satisfied Customers Worldwide
- ★ Multi-Platform capabilities - **Windows, Mac, Android, iPhone, iPod, iPad, Kindle**

Need Help

Please provide as much detail as possible so we can best assist you.

To update a previously submitted ticket:



 One Year Free Update <p>Free update is available within One Year after your purchase. After One Year, you will get 50% discounts for updating. And we are proud to boast a 24/7 efficient Customer Support system via Email.</p>	 Money Back Guarantee <p>To ensure that you are spending on quality products, we provide 100% money back guarantee for 30 days from the date of purchase.</p>	 Security & Privacy <p>We respect customer privacy. We use McAfee's security service to provide you with utmost security for your personal information & peace of mind.</p>
---	---	--

[Guarantee & Policy](#) | [Privacy & Policy](#) | [Terms & Conditions](#)

Any charges made through this site will appear as Global Simulators Limited.

All trademarks are the property of their respective owners.

Copyright © 2004-2015, All Rights Reserved.