

100% Money Back
Guarantee

Vendor:IBM

Exam Code:COG-625

Exam Name:IBM Cognos 10 BI Data Warehouse
Developer Practice Test

Version:Demo

QUESTION 1

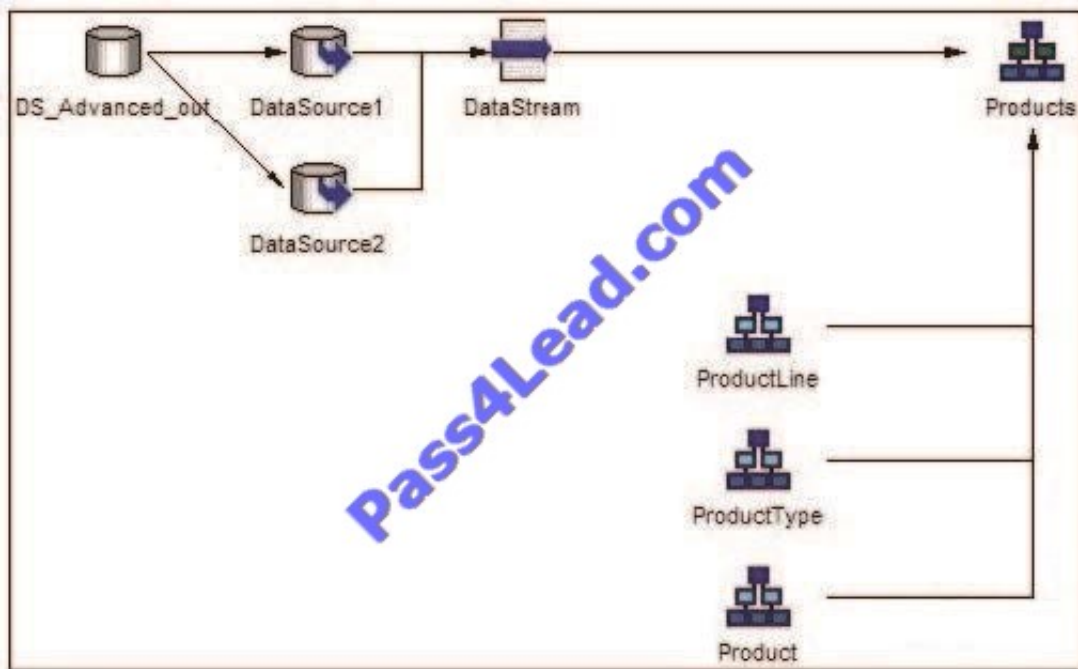
A developer has created a hierarchy that uses multiple data sources. The developer wants to know if there are multiple parents or children without parents. What tool should the administrator use?

- A. Navigator
- B. SQLTXT Designer
- C. SQLTerm
- D. Reference Explorer
- E. Hierachy wizard

Correct Answer: D

QUESTION 2

The following hierarchy has been created:



Before executing the dimension build, the developer wants to ensure that duplicate rows are excluded from each hierarchy level. If any duplicates are encountered, the developer only wants to keep the row from DataSource1. The data sources will be executed in series. What should be done?

- A. Create a data integrity lookup for the hierarchy that will flag duplicate rows at each level.
- B. Specify that duplicate rows are to be rejected on the Audit tab of the dimension build's properties.
- C. Modify the SQL statement for the dimension build to use the SELECT DISTINCT clause.

D. Specify that duplicate rows are to be rejected on the Features tab of the hierarchy's properties.

Correct Answer: D

QUESTION 3

End users must be able to create Cognos 8 reports using data from the data warehouse. To facilitate this, what can the developer do from within Data Manager?

- A. Run the Create Framework Manager Model wizard to create a project.
- B. Create a Cognos 8 package in the Library area of the catalog.
- C. Export the Data Manager metadata to XML for use in Framework Manager.
- D. Publish a Cognos 8 package in the Metadata area of the catalog.

Correct Answer: C

QUESTION 4

Which of the following are characteristics of surrogate keys? (choose three)

- A. Are numbers.
- B. Tend to be larger than keys from operational systems.
- C. Are text-based.
- D. Are replaced by business keys in the data warehouse.
- E. Have no intrinsic meaning.
- F. Are unique.

Correct Answer: AEF

QUESTION 5

What is a difference between a measure element and an attribute element?

- A. Attribute values can be aggregated by Data Manager, while measure values cannot.
- B. Measure values can be merged by Data Manager, while attribute values cannot.
- C. Attribute values can be merged by Data Manager, while measure values cannot.
- D. Measure values can be aggregated by Data Manager, while attribute values cannot.

Correct Answer: D

QUESTION 6

Which of the following is true of pivoting?

- A. Each data source column in the array must be mapped to a corresponding pivot value.
- B. It increases the number of output columns.
- C. It decreases the number of output rows.
- D. Each data source column in the array must be mapped to a pivot derivation element.

Correct Answer: A

QUESTION 7

What can be seen with Reference Explorer that cannot be seen when using SQLTerm to examine the data?

- A. Hierarchical data from two database connections.
- B. Number of rows in the data source used to build the hierarchy.
- C. Number of tables in the data source used to build the hierarchy.
- D. Columns from which the member data was obtained.

Correct Answer: A

QUESTION 8

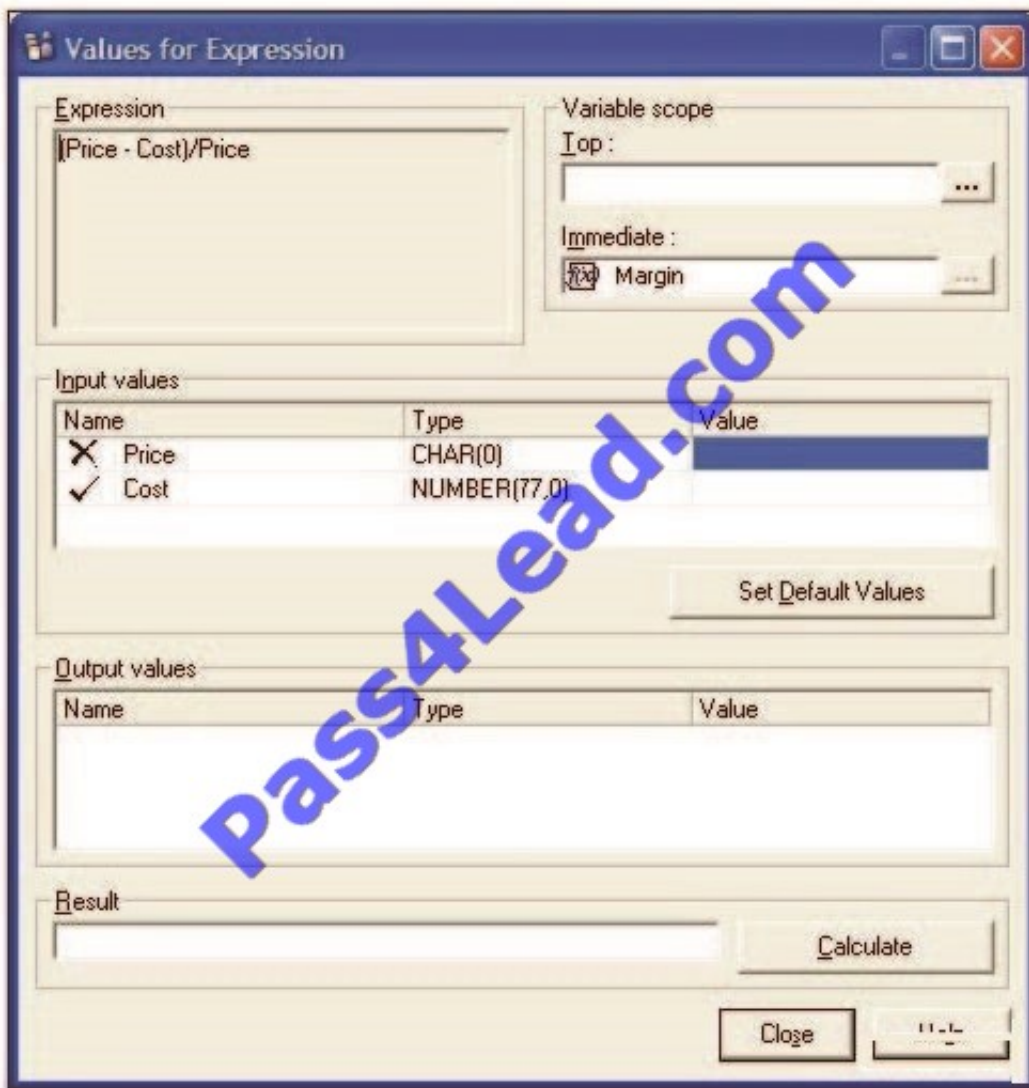
Which element does Data Manager use to identify duplicate rows?

- A. Dimension
- B. Attribute
- C. Measure
- D. Index

Correct Answer: A

QUESTION 9

A developer is attempting to test a derivation.



In the Input values section, what does the cross symbol beside Price indicate?

- A. No value has yet been defined for Price in the Output values section.
- B. The option in the Top box should be set to Price.
- C. The option in the Immediate box should be set to Price.
- D. A definition for Price has not been found.

Correct Answer: D

QUESTION 10

During execution, a fact build generated the following messages in the log file:

```
[INTERNAL - 11:14:05]Hash: 118 page(s), 135173 of 150000 slots  
in use (90%), 0 reusables, avg 2.56 hits  
[INTERNAL - 11:14:05]Hash: table full, restructuring  
[INTERNAL - 11:14:05]Hash: resizing table from 15000  
[INTERNAL - 11:14:05]Hash: table restructuring complete
```

What can be done to avoid seeing the last three lines when the build is executed again?

- A. Increase the initial size of the hash table.
- B. Decrease the size of the page pool.
- C. Disable audit logging.
- D. Increase the amount of working memory (in megabytes).

Correct Answer: A

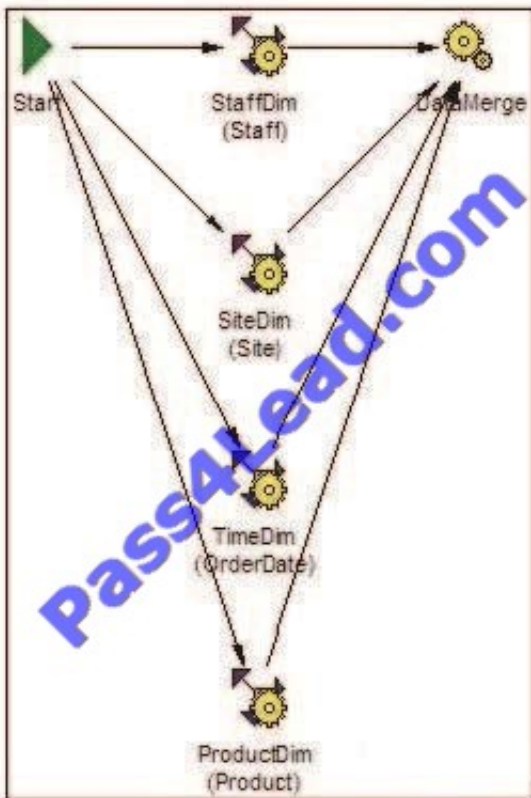
QUESTION 11

Where can a developer define variables in Data Manager?

- A. Metadata dimensions
- B. Connections
- C. JobStreams
- D. Metadata collections

Correct Answer: C

QUESTION 12



In this JobStream, the action on failure setting for the SiteDim node has been set to TERMINATE.

What will happen if this node fails while the JobStream is executing?

- A. Data Manager will immediately stop processing the remaining dimension build nodes, and process the fact build node instead.
- B. Data Manager will stop processing the SiteDim node, but will continue to process the remaining dimension build nodes.
- C. Data Manager will stop all processing of all nodes in the JobStream, even if they are currently running.
- D. Data Manager will remove the SiteDim node from the JobStream and restart the execution process.

Correct Answer: B

To Read the [Whole Q&As](#), please purchase the [Complete Version](#) from [Our website](#).

Try our product !

100% Guaranteed Success

100% Money Back Guarantee

365 Days Free Update

Instant Download After Purchase

24x7 Customer Support

Average **99.9%** Success Rate

More than **800,000** Satisfied Customers Worldwide

Multi-Platform capabilities - **Windows, Mac, Android, iPhone, iPod, iPad, Kindle**

Need Help

Please provide as much detail as possible so we can best assist you.

To update a previously submitted ticket:



 <p>One Year Free Update Free update is available within One Year after your purchase. After One Year, you will get 50% discounts for updating. And we are proud to boast a 24/7 efficient Customer Support system via Email.</p>	 <p>Money Back Guarantee To ensure that you are spending on quality products, we provide 100% money back guarantee for 30 days from the date of purchase.</p>	 <p>Security & Privacy We respect customer privacy. We use McAfee's security service to provide you with utmost security for your personal information & peace of mind.</p>
---	---	--

Any charges made through this site will appear as Global Simulators Limited.

All trademarks are the property of their respective owners.