

100% Money Back
Guarantee

Vendor: IBM

Exam Code: C2090-552

Exam Name: IBM InfoSphere Optim for Distributed
Systems - V7.3.1

Version: Demo

Topic 1, Volume A

Question No : 1 - (Topic 1)

You can use the silent installer in a UNIX environment to install the Optim Server. The silent installer is NOT available for which two of the following platforms? (Choose two.)

- A. HP-UX 11i v2
- B. Red Hat Linux 3
- C. IBM AIX 5
- D. Solaris 8
- E. SUSE 10

Answer: B,D

Question No : 2 - (Topic 1)

When installing Optim, what is the minimum disk space needed for the database?

- A. 50gb
- B. 50mb
- C. As required
- D. 500mb

Answer: C

Question No : 3 - (Topic 1)

You are planning an installation of IBM Optim. Which two configurations are supported for the Optim Server and Optim Directory? (Choose two.)

- A. DB2 database running on Ubuntu Linux
- B. DB2 or Oracle databases running on AIX
- C. Oracle or Microsoft SQL Server databases running on AIX
- D. DB2 or Informix databases running on Sun Solaris
- E. DB2 or Microsoft Access databases running on Windows XP Professional

Answer: B,D

Question No : 4 - (Topic 1)

Which two statements are true about Optim security roles? (Choose two.)

- A. Functional Privilege classes such as Create New Actions and Create New Definitions can be controlled using Roles.
- B. Privileges such as Archive Request and Compare Request can be controlled using Roles
- C. By default, the Access Control Domain allows access to all Optim Actions and privileges. Only denial of privileges can be assigned using roles.
- D. Default Roles may not be modified to allow or deny Functional Privilege Classes and New Action Privileges.
- E. Edit the FAD (File Access Definition) to control which roles has access to all of the files.

Answer: A,B

Question No : 5 - (Topic 1)

The customer has critical production systems against which Optim archive and delete processes are run. If Optim archive and delete processes are run at the wrong time, it will impact business. Which of the following will resolve the issue?

- A. Using the Optim Configuration program, initialize Optim Security and assign a Security Administrator. For each role, grant or deny the appropriate privileges.
- B. Configure object security, which will deny access to sensitive production objects.
- C. By default, the Access Control Domain allows or denies access to particular Optim functions.
- D. Configure program security to restrict access to the Optim executables.

Answer: A

Question No : 6 - (Topic 1)

When performing an archive process that uses a Storage Profile, which action could be performed as a result of using the storage profile?

- A. Creates a connection to the database for use by the storage management device.

-
- B.** Creates a connection to the storage management device and copies an Archive File to a backup device.
 - C.** Creates a storage allocation parameter for the storage or file management system.
 - D.** Creates a duplicate of the existing information from the Archive Repository on the storage management device.

Answer: B

Question No : 7 - (Topic 1)

When installing Optim, which of the following is true?

- A.** ODM/Optim Connect must be installed during the Optim Installation process.
- B.** ODM/Optim Connect must be installed after Optim is successfully installed.
- C.** ODM/Optim Connect can be installed either during the Optim installation, or after Optim is successfully installed.
- D.** ODM/Optim Connect is not a part of the Optim Installation.

Answer: C

Question No : 8 - (Topic 1)

The Optim Directory is built in an Oracle Database. If the project Database is Unicode enabled, which of the following is true?

- A.** The Optim Directory can be enabled as either Unicode or Non-Unicode.
- B.** The Optim Directory and the DB Alias must both be initialized the same, either both as Unicode or both as Non-Unicode.
- C.** The Optim Directory and the DB Alias both must be Unicode enabled.
- D.** The DB Alias must be enabled as Non-Unicode.

Answer: C

Question No : 9 - (Topic 1)

You have installed the Optim Server on an AIX system. The system is configured with various internal and external storage options attached to the server. Where should the Optim Temporary Work folder be placed?

-
- A. the attached archive appliance
 - B. the attached NAS device
 - C. the system's internal disk drives
 - D. the attached SAN device

Answer: C

Question No : 10 - (Topic 1)

You are installing IBM Optim into an Oracle environment. Which statement is correct about user permissions?

- A. The installation user requires the DBA role.
- B. The installation user is the only user that can run Optim.
- C. The installation user's permissions must be deleted once the installation is complete and all DB Aliases are created.
- D. The installation user must have the SELECT ANY DICTIONARY role.

Answer: D

Question No : 11 - (Topic 1)

Which databases are directly supported on distributed platforms for Optim Test Data Management?

- A. DB2 LUW, Oracle, Microsoft SQL Server, Microsoft Access
- B. Sybase, Informix, Progress, DB2LUW, MySQL, Microsoft SQL Server
- C. Informix, Microsoft SQL Server, Sybase, DB2 LUW, Oracle
- D. Microsoft Access, MySQL, Progress, DB2 LUW, Oracle, Sybase

Answer: C

Question No : 12 - (Topic 1)

Where can the Optim Directory be stored?

- A. DB2 UDB for z/OS running on mainframe platform

-
- B. SQL Server running on UNIX platform
 - C. DB2 LUW running on Windows, UNIX or Linux platforms
 - D. Microsoft Access database running on Windows platforms

Answer: C

Question No : 13 - (Topic 1)

Consider the following Archive file name that is defined using macros:
/home/<\$USER>/archives/<MON \$SEQ6>.AF Which filenames would be generated from this macro? (Note: Assume that the file was created on Monday, February 2, 2009, by the person with the user ID of dev3x and the last sequential number assigned was 263.)

- A. /dev3x/Feb000263.AF
- B. /home/dev3x/archives/MON 264.af
- C. /home/dev3x/archives/Feb264.af
- D. /home/dev3x/archives/MON000264.AF

Answer: D

Question No : 14 - (Topic 1)

You must have a password to review and change Product Options. What is the default password?

- A. "null"
- B. "softtech"
- C. "optim"
- D. "ibm"

Answer: C

Question No : 15 - (Topic 1)

Optim objects are saved in the Optim Directory. Which two statements are true about saving Optim objects? (Choose two.)

-
- A. Optim objects like Column Maps, Table Maps and Access Definitions are saved with two-part names.
 - B. Only Optim relationships are saved in the Optim Directory.
 - C. If a Column Map is noted as local, with no name, it is used only once and then discarded.
 - D. An Archive Request cannot be saved in the Optim Directory.
 - E. There may be more than one Optim object with the same name as long as they are different types of objects.

Answer: A,E

Question No : 16 - (Topic 1)

Given the following command-line export command: PROCMND /EXPORT TYPE=EX NAME=%.% Which required parameter is missing from this syntax?

- A. The name of the export file is missing.
- B. The name of the report file is missing.
- C. The name of the Optim Directory is missing.
- D. The name of the parameter file is missing.

Answer: A

Question No : 17 - (Topic 1)

Click the Exhibit button.

Options		Child	Parent Table	Child Table
(1)	(2)	Limit		
<input checked="" type="checkbox"/>	<input type="checkbox"/>		CUSTOMERS	ORDERS
<input checked="" type="checkbox"/>	<input type="checkbox"/>		ITEMS	DETAILS
<input checked="" type="checkbox"/>	<input type="checkbox"/>		ORDERS	DETAILS
<input checked="" type="checkbox"/>	<input type="checkbox"/>		SALES	STATE_LOOKUP
<input checked="" type="checkbox"/>	<input type="checkbox"/>		SALES	CUSTOMERS

EXTRACT STEPS for TEST.CERT

Step 1:

Extract Rows from Start Table ORAOPTIM.SAMPLE.SALES. No Point and Shoot List, Selection Criteria or Statistical Controls used, therefore Start Table does not need to be revisited, even if part of a Cycle.

Step 2:

Extract Rows from ORAOPTIM.SAMPLE.STATE_LOOKUP which are Children of Rows Previously Extracted from ORAOPTIM.SAMPLE.SALES in Step 1 using Relationship CERTTEST.

Step 3:

Extract Rows from ORAOPTIM.SAMPLE.CUSTOMERS which are Children of Rows Previously Extracted from ORAOPTIM.SAMPLE.SALES in Step 1 using Relationship RSC.

Step 4:

Extract Rows from ORAOPTIM.SAMPLE.ORDERS which are Children of Rows Previously Extracted from ORAOPTIM.SAMPLE.CUSTOMERS in Step 3 using Relationship RCO.

Untraversed Table(s):

ORAOPTIM.SAMPLE.ITEMS

Reference Table(s):

ORAOPTIM.SAMPLE.DETAILS
All Rows

Untraversed Relationship(s):

CERTTEST

Given the information from the Relationships tab of an Access Definition, and the associated Show Steps report as shown in the exhibit, what is the reason that the ITEM 552.S table is listed as UNTRAVERSED?

- A. Options (2) must be enabled for the relationship between DETAILS and ITEM 552.S.
- B. The DETAILS table is designated as a Reference Table so all relationships are ignored for this table.
- C. Options (1) must be disabled for the relationship between DETAILS and ITEM 552.S.
- D. No relationship exists between ITEM 552.S and any other table.

Answer: B

Question No : 18 - (Topic 1)

When you specify the default minimum retention period for protecting Archive Files on a managed storage system from deletion, when will the files be deleted?

- A. When the expiration date on the Archive File has been reached, Optim issues a request to the managed storage system to delete the file.
- B. After the minimum retention period expires, the file can be deleted from Optim.
- C. After the minimum retention period expires, the file can be marked deleted by the managed storage system.
- D. After the retention period is reached, the file will be automatically deleted by Optim.

Answer: C

Question No : 19 - (Topic 1)

What will cause a failure during an Archive Process?

- A. An Optim Connector ODBC definition does not exist for the Archive Collection.
 - B. An Archive File Collection already contains more than 12 Archive Files.
 - C. An invalid Archive File is automatically added to an Archive File Collection.
 - D. An Archive Process will always complete unless the ignore Errors?check box is selected
- An Archive Process will always complete unless the ?gnore Errors?check box is selected

Answer: C

Question No : 20 - (Topic 1)

You can specify the default minimum retention period for protecting Archive Files on Centera from deletion. How is the minimum retention period calculated?

- A. from the time Centera copies the file
- B. from the time the Archive Process copies the file to Centera
- C. from the time that the Archive Process copies the file to the local file system

D. from the time Centera copies the file from the local file system

Answer: B

Question No : 21 - (Topic 1)

A new relationship in the Status column of the Relationship tab of the Access Definition panel indicates a relationship is being displayed for the first time. Which two events will cause the relationship to be displayed as new? (Choose two.)

- A. A new Optim Primary Key has been defined for the relationship
- B. A new relationship between tables on the list is defined
- C. The indexes used by the database relationship have been modified
- D. A table is added to the list
- E. A column has been added to a table in the relationship chain

Answer: B,D

Question No : 22 - (Topic 1)

When you create a new Column Map, which of the following is NOT a valid source?

- A. A table in an Extract File
- B. A constant value
- C. A table in an Archive File
- D. A table in a database

Answer: B

Question No : 23 - (Topic 1)

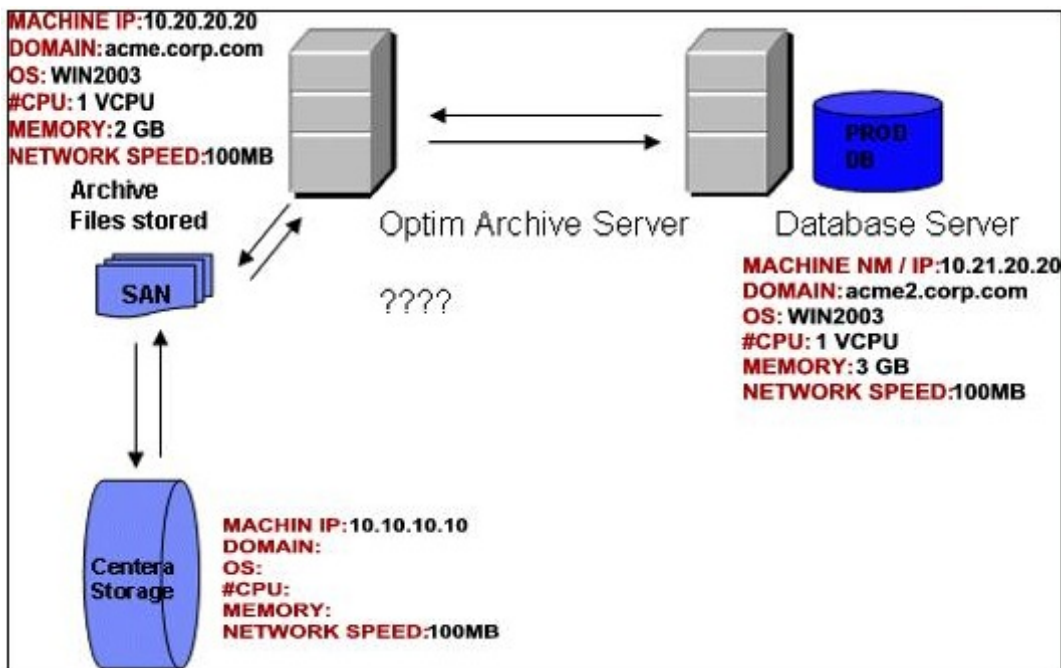
Although Optim creates files on fixed media, you can also direct certain file type(s) to secondary media, e.g., tape, content addressed storage, or a hierarchical storage management(HSM) system. Which types of file(s) may be directed to secondary media?

- A. Extract, Archive, and Archive Index Files
- B. Extract and Archive Files
- C. Archive Files only
- D. Archive Index Files only

Answer: C

Question No : 24 - (Topic 1)

Click the Exhibit button.



Which Optim high level architecture area is missing from the exhibit for an archiving project requiring a Collection of Archive Files for data reporting and viewing?

- A. Optim Server
- B. Extended Data Source Manager
- C. WebSphere Application Server
- D. ODM/Optim Connect

Answer: D

Question No : 25 - (Topic 1)

Why would you use the Optim File Maintenance Facility?

- A. To remove rows from registered Archive Files and compress Archive and Extract Files.
- B. To update Archive File Indexes and Register Archive Files that have been moved from their original location.
- C. To remove rows from registered Archive and Extract Files and compress Archive and Extract Files.
- D. To remove rows from registered Archive Files, Extract Files, and database load files, and compress Archive, Extract, and database load Files.

Answer: A

Question No : 26 - (Topic 1)

In addition to a license, which of the following is necessary to run ODM in a production environment?

- A. Optim Connect Server software
- B. Report writer software
- C. Optim Connect Studio software
- D. Oracle HSODBC

Answer: A

Question No : 27 - (Topic 1)

Which statement about disk storage requirements for Archive Index Files is correct?

- A. The disk storage requirements are always less than the requirements for the associated Archive Files.
- B. The diskstorage requirements are always specified in the Optim Directory.
- C. The disk storage requirements are often the same or more than the associated Archive Files.
- D. The disk storage requirements are the same as the associated Archive Files.

Answer: C

Question No : 28 - (Topic 1)

Regarding the ODM/Optim Connect, which statement is true?

- A. ODM/Optim Connect is used to make all extended data sources seem like Oracle views.
- B. ODM/Optim Connect is used to expose Optim Archive files to applications.
- C. Archive file security is ignored if you use ODM/Optim Connect.
- D. Optim Extract files exposed by ODM/Optim Connect can be queried with normal ANSI SQL statements.

Answer: B

Question No : 29 - (Topic 1)

Which statement is correct with respect to setting expectations around archive access and reporting?

- A. Access to archive data performs just like a database.
- B. ODM/Optim Connect must be used to access the archives.
- C. Access using ODM/Optim Connect provides nearline access to archived data.
- D. Archive data access should rarely be required.

Answer: C

Question No : 30 - (Topic 1)

In a batch file, you can direct the processing that follows the PROCMD processing, by using the process return code, with one of the statements shown below: (1) For Windows: IF ERRORLEVEL n GOTO x (2) For UNIX or Linux: IF EXITCODE n GOTO x Which Optim command line processing function causes Optim to return the process code based on the success or failure of the process that can subsequently be used to direct the processing of other steps?

- A. OUTPUT
- B. RETURNCODE
- C. EXITCODE
- D. ERRORLEVEL

Answer: A

Question No : 31 - (Topic 1)

A customer wants to Decommission their mainframe. Which scenario will Optim address?

- A. They want to continue to use the CICS z/OS application to access the data.
- B. Initially, their data was entered into their z/OS DB2 database. They have now decided to use Oracle on an AIX machine. They want to convert the DB2 packages to Oracle stored procedures.
- C. They have data stored in both VSAM and DB2 on the z/OS platform and want to give up both their DB2 z/OS license and their hosted z/OS environment.
- D. They want to store a copy of the application with the archives, in case they have to restore the data.

Answer: C

Question No : 32 - (Topic 1)

You are licensed for the Optim Test Data Management solution without the Data Privacy Option. What is the correct list of functions that you can use within a Column Map?

- A. SUBSTR, RAND, IDENTITY, SERIAL, PROP, CONCAT, SEQ
- B. RAND, SHUFFLE, PROP, AGE, CONCAT, SUBSTR, TRANS COL
- C. LOOKUP, PROP, IDENTITY, CURRENCY, SEQ, RAND
- D. SHUFFLE, SUBSTR, SERIAL, PROP, SEQ, LOOKUP

Answer: A

Question No : 33 - (Topic 1)

Which of the following is NOT an attribute of a Column Map?

- A. Column Map names are a two part name
- B. You can create a new Column Map from the Definitions submenu.
- C. Columns with the same name and compatible data types are not automatically matched.
- D. If a match is not found for a Destination or Source 2 column, the status is NOT USED or REQUIRED.

Answer: C

Question No : 34 - (Topic 1)

When setting up Optim Connect Studio, which of the following is true?

- A. Only one binding can be defined for each machine.
- B. Optim Connect Studio does not support renaming a binding.
- C. Parallel processing and Query Processor parameters are defined on the Server tab.
- D. Registration of the product is done using Optim Configuration.

Answer: B

Question No : 35 - (Topic 1)

Once an Archive Collection has been completed and Archive Files have been added, which statement describes how ODM processes the Archive Collection?

- A. ODM processes Archive Files in alphabetical order
- B. ODM processes Archive Files in the order they are listed in the collection
- C. ODM processes Archive Files by the date entered in the collection
- D. ODM processes Archive Files in the order that you specify in your query

Answer: B

Question No : 36 - (Topic 1)

How do you start the Optim Server when it is installed on Windows?

- A. It must be started as a service and initiated by root.
- B. It must be started manually as a process by any user.
- C. It must be started by a user with the ability to log on as a batch job.
- D. It must be started automatically when the machine is started.

Answer: C

Question No : 37 - (Topic 1)

Optim relationships are used by all Optim tools. If multiple relationships exist between a

pair of tables, which two statements are true? (Choose two.)

- A. Optim will not allow you to create duplicate relationships between tables.
- B. Optim will view two relationships between tables as possible duplicates and ignore one.
- C. Optim will view two relationships between tables as possible duplicates but will still use both if selected.
- D. Optim allows duplicate relationships but will ignore them if they are in fact duplicate.
- E. Optim will keep cycling until all relevant rows have been found.

Answer: C,E

Question No : 38 - (Topic 1)

After the Relationship Index Analyzer has completed, which two actions can be performed from the pop-up dialog window? (Choose two.)

- A. Create All Indexes
- B. Notify DBA Via E-mail
- C. Create Index
- D. Create Database Relationship
- E. Open Access Definition

Answer: A,C

Question No : 39 - (Topic 1)

When performing a Delete Request, you notice that Optim is doing a table scan even though you have specified a Key Lookup in the Access Method of the Table Access Strategy panel for the Delete Request. Why might Optim be doing a scan even though you have specified to use a key to access the table?

- A. The wrong index was chosen for the Optim Primary Key for the table.
- B. The table has a very large amount of data and the database engine has chosen a different access strategy than what you have specified.
- C. You do not have authority in the database to specify a key to use.
- D. Compare Row Contents option was not selected prior to running the Delete Request.

Answer: A

Question No : 40 - (Topic 1)

You discovered a slow performance issue during an archive process with delete deferred. By using the Statistical Report and the Relationship Index Analysis, you were able to determine that there was a missing index on one of the tables. The index has been added to the database, and the Statistical Report reflects that the index is being used for a key lookup. Performance has improved somewhat. Which two actions will help you to further increase performance of the archive? (Choose two.)

- A. Force a scan on this table.
- B. Increase your commit frequency.
- C. Use more than one database connection for the archive process.
- D. Increase the Key Lookup Limit for this table.
- E. Turn the Compare Rows option off.

Answer: C,D

Question No : 41 - (Topic 1)

You are having an issue with your Optim Server (running on Linux) and IBM Support has asked you to enable tracing. Where would you go to enable tracing on the Optim Server?

- A. By checking the enable Tracing checkbox in the Optim Configuration applet in Control Panel
- B. By editing the pstserv.cfg or pstlocal.cfg file to enable tracing
- C. By enabling tracing using the Optim Command Line Utility with the keyword TRACING=1
- D. By using the hidden capabilities within the Windows GUI as explained by IBM Support

Answer: B

Question No : 42 - (Topic 1)

A table contains two columns, CUSTNAME and STATE. You have created the following character expression to mask CUSTNAME: SUBSTR(CUSTNAME,1,3) CONCAT 'EE' + SUBSTR(STATE,1) || SUBSTR(CUSTNAME,5,2) Given the values shown below for CUSTNAME and STATE: CUSTNAME=SANDERS STATE=GA What reflects the value of CUSTNAME after the character expression has been applied?

- A. ANDEEARS
- B. SANEEGER
- C. ANDEEGER
- D. SANEEAER

Answer: B

Question No : 43 - (Topic 1)

Which of the following are included in an Access Definition?

- A. Selection Criteria, Grouping Specifications
- B. Table Maps, Column Maps
- C. Column Lists, Report Specifications
- D. Privacy Functions, Sort Criteria

Answer: A

Question No : 44 - (Topic 1)

You have created an Access Definition containing multiple tables. The tables each have primary keys and additional non-unique indexes that have been added over the years. While defining this archive request you have the choice of defining archive indexes. Which statement is true?

- A. Archive indexes do not need to be defined since Optim has already detected and included the indexes in the archive request.
- B. Archive indexes will automatically be created to mirror the indexes that exist on the tables in the archive request.
- C. Archive indexes should be specified in the Access Definition to match all of the indexes on the tables.
- D. Archive indexes should be specified in the Access Definition that will support the query workload planned for the archived data.

Answer: D

Question No : 45 - (Topic 1)

It is considered a best practice to mask data using functions that produce consistent results (e.g., the same masked values are produced each time the data is masked). Why is this considered a best practice?

- A. Consistency makes it easier to reverse the masking process.
- B. The Optim functions that produce consistent results are the easiest to use.
- C. All Optim functions produce consistent outputs.
- D. Simplifies the daily work for the users/testers of the masked data.

Answer: D

Question No : 46 - (Topic 1)

What identifies the tables, relationship traversals, and selection criteria for the data to be archived?

- A. Access Definition
- B. Archive File
- C. Browse Utility
- D. Storage Profile

Answer: A

Question No : 47 - (Topic 1)

Which statement is true about Optim relationships?

- A. You can reference a maximum of 64 columns for any table in the relationship.
- B. You can use a Large Object (LOB) or SQL variant column.
- C. You can match a literal or constant to a literal or constant.
- D. You can create a Relationship using an SQL Variant column.

Answer: A

Question No : 48 - (Topic 1)

What is the purpose of records with primary key values of ?1? ?2? and ?3? contained in an Optim lookup table?

- A. They are seed records for every lookup table.
- B. They contain values that can only be accessed from an Optim exit/proc.
- C. They are placeholders that allow the client to quickly locate and create additional lookup tables values.
- D. They provide lookup values in cases where a lookup column contains nulls, or spaces, or zero length values.

Answer: D

Question No : 49 - (Topic 1)

Click the Exhibit button.

The screenshot shows a software interface titled "(Untitled) - Table Editor (DEMO.DEMO.SALES)". It features a menu bar with "File", "Edit", "Tools", "Options", and "Help". Below the menu is a toolbar with various icons. The interface is divided into two main sections, each displaying a table.

The first section is for the "SALES" table. It has a "Description:" field and a "Default Qualifier:" dropdown set to "DEMO.DEMO". The table has the following columns: Status, SALESMAN_ID, SALESMAN_NAME, AGE, SEX, TERRITORY, and an unlabeled column. The data rows are:

	Status	SALESMAN_ID	SALESMAN_NAME	AGE	SEX	TERRITORY	
1	Updated	NC003	Olive Oyl	21	F	NorthCentral	MA0081
2	Updated	NC005	Mick E. Mouse	40	M	NorthCentral	MA0081
3		NC012	Tooth Fairy	21	F	NorthCentral	MA0081
4		NE003	Peter Pan	50	M	NorthEast	MA0066

The second section is for the "CUSTOMERS" table. It has a "Table:" dropdown set to "CUSTOMERS". The table has the following columns: Status, CUST_ID, CUSTNAME, ADDRESS, CITY, STATE, ZIP, and YTD. The data rows are:

	Status	CUST_ID	CUSTNAME	ADDRESS	CITY	STATE	ZIP	YTD
1		00146	Popcorn Vid	Aramingo Place	Blackberry	MN	70800	
2	Updated	00411	Five Star Vi	123 Howe Lane	Bonanza Grove	MN	02101	
3	Updated	00412	Front Row	U.S. Highway 13	Bowstring	MN	29402	
4		00416	Main Street	Celadon Street	Core	MN	65000	

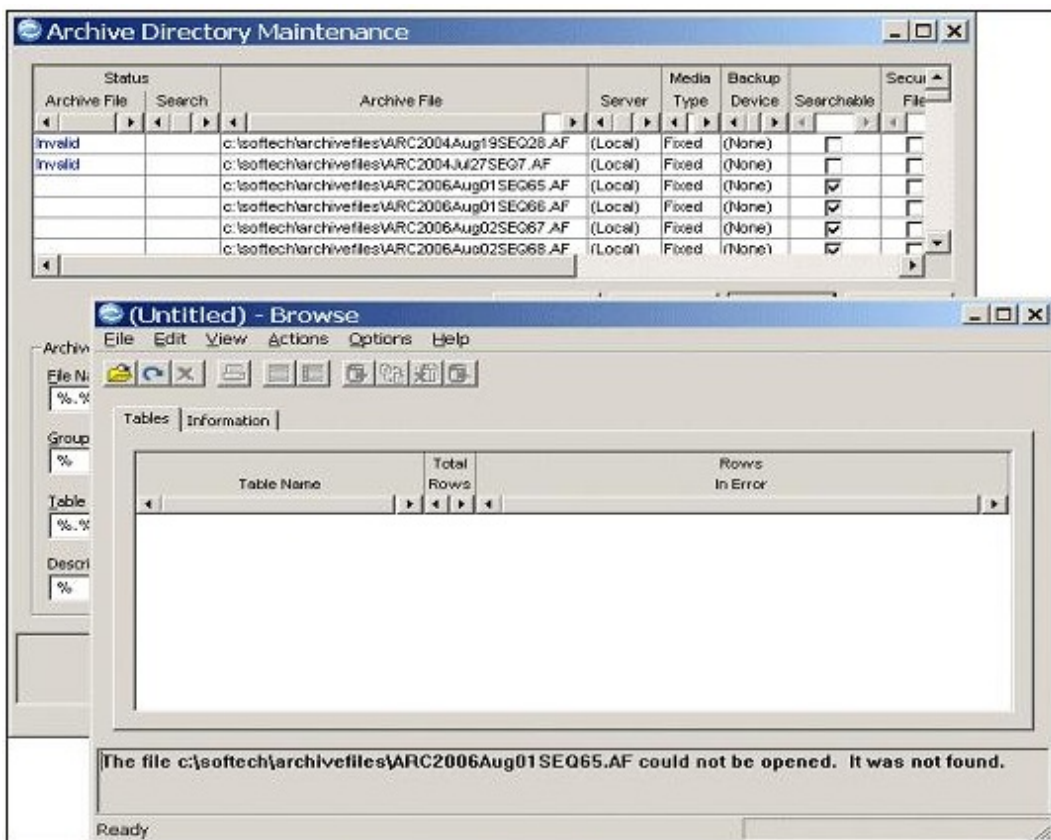
Using the Optim Editor as shown in the exhibit, you have made multiple changes on each of the updated rows in the SALES and CUSTOMERS tables. You now decide that you want to undo the last change to row 1 in SALES. What should you do?

- A. Right-click on the row and choose "Undo Row".
- B. Right-click on the row and choose "Undo Change".
- C. Right-click on the row and choose "Undo?".
- D. Right-click on the row and choose "Undo All".

Answer: C

Question No : 50 - (Topic 1)

Click the Exhibit button.



The client understands that the first two archive files shown in the exhibit are in an inaccessible status. When they try to browse the third archive file in the list, they get the error shown in the foreground window as shown in the exhibit. Which statement is correct?

- A. ARC2006Aug01SEQ65.AF is also corrupted and should just be deleted.

-
- B.** ARC2006Aug01SEQ65.AF was moved; move it back into the same directory, and you should be able to browse it.
- C.** The Optim Server needs to be started and then you should be able to browse ARC2006Aug01SEQ65.AF.
- D.** The Optim Connect daemon is not running and needs to be restarted.

Answer: B

Question No : 51 - (Topic 1)

A row in a parent table is related to rows in one of several child tables based on a value in a particular column. What is this type of Relationship called?

- A.** Compound
- B.** Data-Driven
- C.** Symbiotic
- D.** Generic

Answer: B

Question No : 52 - (Topic 1)

Which two of the following are true about a Restore Request? (Choose two.)

- A.** You can Create, Modify, or Delete a Restore Request
- B.** You cannot Modify a RestoreRequest
- C.** Restore Request cannot be saved
- D.** A Restore Request can be saved
- E.** A Restore Request is required to put data back to the database

Answer: A,D

Question No : 53 - (Topic 1)

Which Optim process(es) produce output which can be selectively restored to a database?

- A.** Archive

-
- B. Archive, Compare, and Restore
 - C. Extract and Archive
 - D. Archive, Edit, Extract, Compare, and Restore

Answer: A

Question No : 54 - (Topic 1)

In a Delete Request, Compare Row Contents has been checked on the General tab of the Delete RequestEditor. What is the impact of this option?

- A. The Delete Request will connect to all archive files which have been updated since the time of the Archive Process.
- B. Archive will delete rows which have been updated since the time of the Archive Process.
- C. Archive will only delete the rows which have been updated since the time of the Archive Process.
- D. Archive will not delete rows which have been updated since the time of the Archive Process.

Answer: D

Question No : 55 - (Topic 1)

When using Optim to decommission a database, which statement is true?

- A. All database indexes must be added to the Access Definitions used before archives are created.
- B. Column Maps must be created to mask sensitive data.
- C. All previous archives must be restored to the production database and then one archive file is created.
- D. One or more Access Definitions must be created that have every relevant table in the database.

Answer: D

To Read the [Whole Q&As](#), please purchase the [Complete Version](#) from [Our website](#).

Trying our product !

- ★ **100%** Guaranteed Success
- ★ **100%** Money Back Guarantee
- ★ **365 Days** Free Update
- ★ **Instant Download** After Purchase
- ★ **24x7** Customer Support
- ★ Average **99.9%** Success Rate
- ★ More than **69,000** Satisfied Customers Worldwide
- ★ Multi-Platform capabilities - **Windows, Mac, Android, iPhone, iPod, iPad, Kindle**

Need Help

Please provide as much detail as possible so we can best assist you.

To update a previously submitted ticket:



 One Year Free Update <p>Free update is available within One Year after your purchase. After One Year, you will get 50% discounts for updating. And we are proud to boast a 24/7 efficient Customer Support system via Email.</p>	 Money Back Guarantee <p>To ensure that you are spending on quality products, we provide 100% money back guarantee for 30 days from the date of purchase.</p>	 Security & Privacy <p>We respect customer privacy. We use McAfee's security service to provide you with utmost security for your personal information & peace of mind.</p>
---	---	--

[Guarantee & Policy](#) | [Privacy & Policy](#) | [Terms & Conditions](#)

Any charges made through this site will appear as Global Simulators Limited.

All trademarks are the property of their respective owners.

Copyright © 2004-2015, All Rights Reserved.