

100% Money Back
Guarantee

Vendor:ISEB

Exam Code:BH0-004

Exam Name:ISEB ISTQB Certificate in Software
Testing

Version:Demo

QUESTION 1

Which of the following is a purpose of the review planning phase?

- A. Log defects.
- B. Explain the documents to the participants.
- C. Gather metrics.
- D. Allocate the individual roles.

Correct Answer: D

QUESTION 2

What is beta testing?

- A. Testing performed by potential customers at the developers location.
- B. Testing performed by potential customers at their own locations.
- C. Testing performed by product developers at the customer's location.
- D. Testing performed by product developers at their own locations.

Correct Answer: B

QUESTION 3

A wholesaler sells printer cartridges. The minimum order quantity is 5. There is a 20% discount for orders of 100 or more printer cartridges. You have been asked to prepare test cases using various values for the number of printer cartridges ordered. Which of the following groups contain three test inputs that would be generated using Boundary Value Analysis?

- A. 5, 6, 20
- B. 4, 5, 80.
- C. 4, 5, 99.
- D. 1, 20, 100.

Correct Answer: C

QUESTION 4

Which of the following is a MAJOR task of test implementation and execution?

- A. Measuring and analysing results.
- B. Reporting discrepancies as incidents.
- C. Identifying test conditions or test requirements.
- D. Assessing if more tests are needed.

Correct Answer: B

QUESTION 5

Which of the following is a MAJOR task of test planning?

- A. Scheduling test analysis and design tasks.
- B. Initiating corrective actions.
- C. Monitoring progress and test coverage.
- D. Measuring and analyzing results.

Correct Answer: A

QUESTION 6

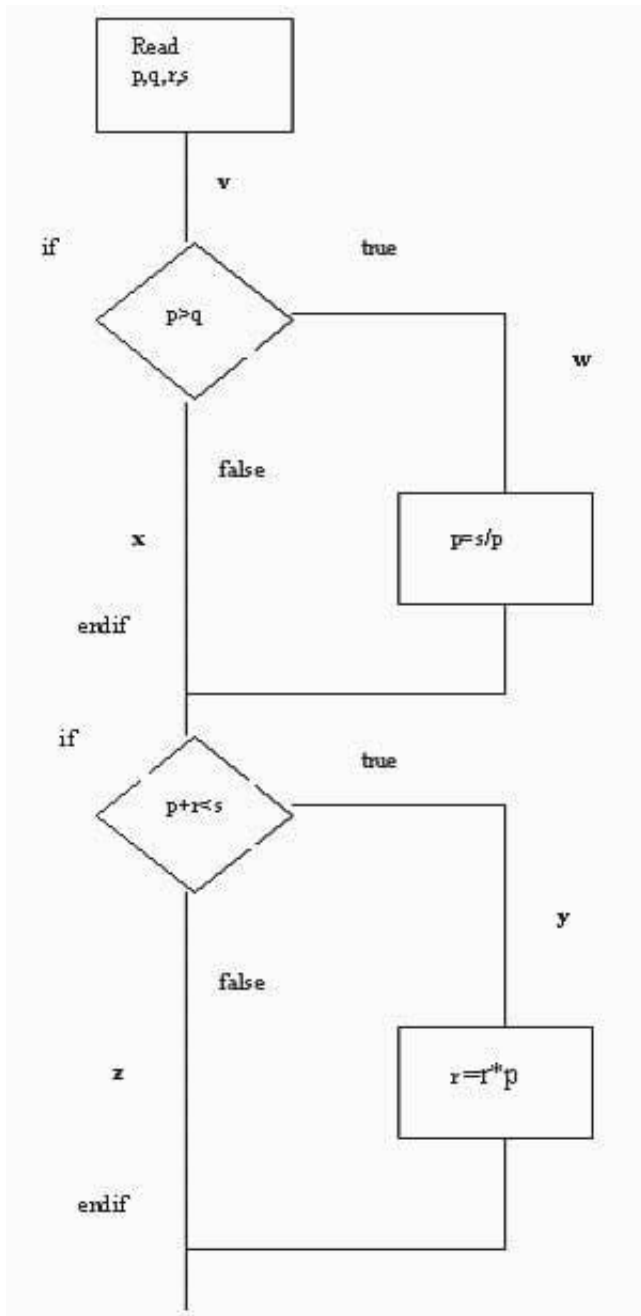
What determines the level of risk?

- A. The cost of dealing with an adverse event if it occurs.
- B. The probability that an adverse event will occur.
- C. The amount of testing planned before release of a system.
- D. The likelihood of an adverse event and the impact of the event.

Correct Answer: D

QUESTION 7

The above diagram represents the following paths through the code.



- A. vwy
- B. vwz
- C. vxy
- D. vxz

What is the MINIMUM combination of paths required to provide full statement coverage?

- A. A
- B. ABD
- C. ABCD

D. ACD

Correct Answer: A

QUESTION 8

Which of the following is a benefit of test independence?

- A. It does not require familiarity with the code.
- B. It is cheaper than using developers to test their own code.
- C. It avoids author bias in defining effective tests.
- D. Testers are better at finding defects than developers.

Correct Answer: C

QUESTION 9

Which of the following is MOST characteristic of specification based (black-box) techniques?

- A. Test cases can be easily automated.
- B. Test cases are independent of each other.
- C. Test cases are derived systematically from models of the system .
- D. Test cases are derived systematically from the delivered code.

Correct Answer: C

QUESTION 10

Given the following fragment of code, how many tests are required for 100% decision coverage?

```
if width > length then biggest_dimension = width
if height > width then biggest_dimension = height
end_if
else
biggest_dimension = length
if height > length then biggest_dimension = height
end_if
end_if
```

- A. 3
- B. 4
- C. 2
- D. 1

Correct Answer: B

QUESTION 11

Which of the following is correct?

- A. Impact analysis assesses the effect on the system of a defect found in regression testing.
- B. Impact analysis assesses the effect of a new person joining the regression test team.
- C. Impact analysis assesses whether or not a defect found in regression testing has been fixed correctly.
- D. Impact analysis assesses the effect of a change to the system to determine how much regression testing to do.

Correct Answer: D

QUESTION 12

Which of the following combinations correctly describes a valid approach to component testing:

i) Functional testing of the component in isolation. ii) Structure-based testing of the code without recording incidents. iii) Automated tests that are run until the component passes. iv) Functional testing of the interfaces between modules.

- A. i and ii.
- B. i, ii and iii
- C. iii.
- D. ii and iv

Correct Answer: B