

**100%** Money Back  
**Guarantee**

**Vendor:**Microsoft

**Exam Code:**70-981

**Exam Name:**Recertification for MCSE: Private Cloud

**Version:**Demo

## QUESTION 1

You deploy System Center 2012 Operations Manager.

You create two unsealed management packs named MP1 and MP2.

You create an override for MP1.

You create a group in MP2.

You need to apply the override for MP1 to the group in MP2.

What should you do before you apply the override?

- A. Create a new class in MP2.
- B. Seal MP1.
- C. Seal MP2.
- D. Create a new class in MP1.

Correct Answer: C

When you create a group, you save it to an unsealed management pack. However, an element in an unsealed management pack, such as a group, cannot reference an element in a different unsealed management pack, such as an override

or a view.

If you are going to use a group to target an override or scope a view, you must either save the group to the same unsealed management pack as the override or view, or you must seal the management pack that contains the group. If you

save the group to the same unsealed management pack as the override or view, you can only use that group for overrides and views that are also contained in that unsealed management pack.

If you seal the management pack that contains the group, you can reference that group from other unsealed management packs.

However, you cannot easily change any group settings in the sealed management pack or add new groups to the sealed management pack.

<http://www.code4ward.net/main/Blog/tabid/70/EntryId/130/Implications-when-using-groups- from- a-sealed-MPfor-overrides.aspx>

---

## QUESTION 2

Your network contains an Active Directory forest named contoso.com. The forest contains a System Center 2012 Operations Manager infrastructure.

Your company, named Contoso Ltd., has a partner company named A. Datum Corporation. The A. Datum network contains an Active Directory forest named adatum.com. Adatum.com does not have any trusts. A firewall exists

between the

A. Datum network and the Contoso network. You configure conditional forwarding on all of the DNS servers to resolve names across the forests.

You plan to configure Operations Manager to monitor client computers in both of the forests. You need to recommend changes to the infrastructure to monitor the client computers in both of the forests.

What should you include in the recommendation? (Each correct answer presents part of the solution. Choose two.)

- A. Allow TCP port 5723 on the firewall.
- B. Deploy a gateway server to adatum.com.
- C. Create a DNS zone replica of adatum.com.
- D. Allow TCP port 5986 on the firewall.
- E. Create a DNS zone replica of contoso.com.
- F. Deploy a gateway server to contoso.com.

Correct Answer: AB

A: Gateway, System Center Management service, 5723/TCP

B: if there is a firewall between the agents and management servers, multiple authorized endpoints must be defined and maintained in the firewall rules to allow communication between them.

To reduce this administrative overhead, Operations Manager has a server role called the gateway server. Gateway servers are located within the trust boundary of the agents and can participate in the mandatory mutual authentication.

Because they lie within the same trust boundary as the agents, the Kerberos V5 protocol for Active Directory is used between the agents and the gateway server. Each agent then communicates only with the gateway servers that it is aware

of. The gateway servers communicate with the management servers.

<http://technet.microsoft.com/en-us/library/hh212823.aspx> <http://technet.microsoft.com/en-us/library/hh298610.aspx>

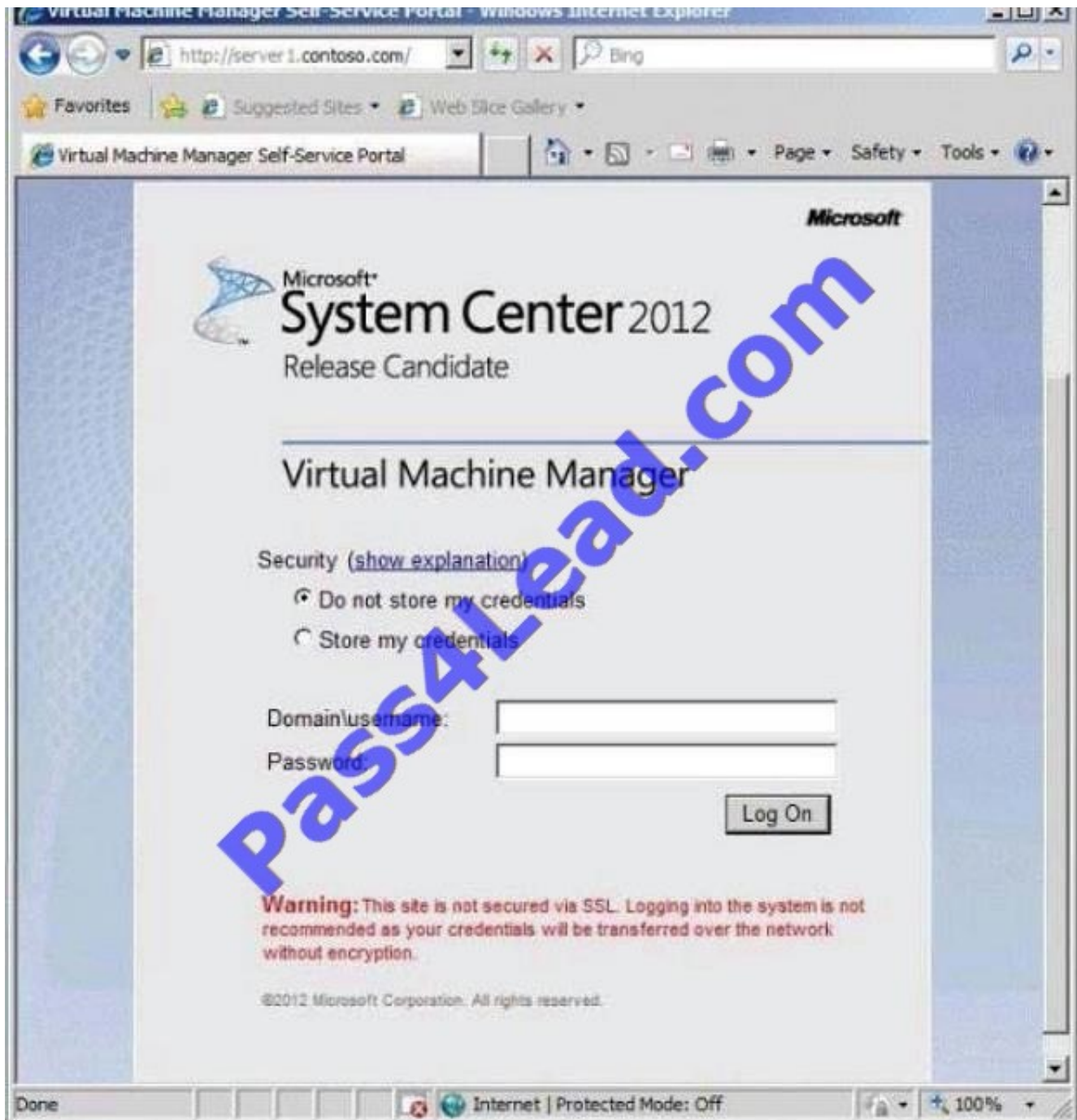
---

### QUESTION 3

Your network contains an Active Directory domain named contoso.com. Certificate autoenrollment is configured for all client computers in the domain.

You install System Center 2012 Virtual Machine Manager (VMM) on a server named Server1. You install the Virtual Machine Manager Self-Service Portal (VMMSSP) on Server1.

Users report that they receive the message shown in the exhibit when they connect to the VMMSSP. (Click the Exhibit button.)



You need to ensure that the users connect to the VMMSSP by using HTTPS. What should you do?

- A. From the Certificates console, add a Cross-Certificate download URL.
- B. From Internet Information Services (IIS) Manager, modify the binding settings.
- C. From the VMM Administrator Console, modify the Network Settings.
- D. From Internet Information Services (IIS) Manager 6.0, modify the security communication settings.

Correct Answer: B

<http://technet.microsoft.com/en-us/library/dd548288.aspx>

---

**QUESTION 4**

Which settings should User9 configure in the Add Windows Server Update Services Server dialog box on Server1 to meet the cloud manageability requirements? To answer, select the appropriate options in the answer area.

Hot Area:

## Answer Area

TCP/IP port:

	▼
80	
443	
8080	
8530	

Run As Account:

	▼
User1	
User2	
User3	
User4	
User5	
User6	

Correct Answer:

# Answer Area

TCP/IP port:

	▼
80	
443	
8080	
8530	

Run As Account:

	▼
User1	
User2	
User3	
User4	
User5	
User6	

---

## QUESTION 5

You are evaluating the deployment of System Center 2012 Service Manager.

You need to recommend which actions must be performed to meet the technical requirements for the Exchange Server servers.

Which four actions should you perform in sequence? (To answer, move the appropriate four actions from the list of actions to the answer area and arrange them in the correct order.)

Select and Place:

Actions	Answer Area
Create a service offering in Service Manager.	
Deploy the Service Manager web content server.	
Deploy the Service Manager SharePoint Web Parts to the Web Part Gallery.	
Add the Service Offering Web Part to a SharePoint webpage.	
Add the Request Offering Web Part to a SharePoint webpage.	

Correct Answer:

Actions	Answer Area
	Deploy the Service Manager web content server.
	Deploy the Service Manager SharePoint Web Parts to the Web Part Gallery.
	Add the Request Offering Web Part to a SharePoint webpage.
Add the Service Offering Web Part to a SharePoint webpage.	Create a service offering in Service Manager.

---

**QUESTION 6**

You need to recommend a solution to ensure that Customer1 will be able to establish a site-to-site VPN connection between its on-premises private cloud and its hosted private cloud.

Which three actions should you recommend performing in sequence? To answer, move the appropriate actions from the list of actions to the answer area and arrange them in the correct order.

Select and Place:

Actions	Answer Area
Create and deploy a service template.	
Add a network service.	
Add a provider.	
Create a Capability profile and assign the profile to the on-premises cloud.	
To the VMM library, add a virtual disk that runs Windows Server 2012 R2.	

Correct Answer:

Actions	Answer Area
	
Add a provider.	
Create a Capability profile and assign the profile to the on-premises cloud.	To the VMM library, add a virtual disk that runs Windows Server 2012 R2.
	Create and deploy a service template.
	Add a network service.

---



## QUESTION 7

Your network contains an Active Directory domain named contoso.com. The domain contains a domain controller named DC1 and member servers named Server1 and Server2. Server1 has System Center 2012 R2 Operations Manager

installed. Server2 has System Center 2012 R2 Orchestrator installed. Orchestrator has the System Center Integration Pack for System Center 2012 R2 Operations Manager installed.

In Operations Manager, you have a monitor named Monitor1 that triggers an alert named Alert1.

You need to ensure that when Alert1 is triggered, a custom runbook starts.

Which two actions should you perform from Orchestrator? Each correct answer presents part of the solution.

- A. Configure a filter of PrincipalName equals Alert1.
- B. Configure a filter of MonitorObjectName equals Monitor1.
- C. Add the Get Alert activity.
- D. Add the Monitor Alert activity and configure triggers for the alert.
- E. Configure a filter of Name equals Alert1.

Correct Answer: BD

Explanation: <http://technet.microsoft.com/en-us/library/hh830707.aspx>

---

## QUESTION 8

You are creating a Server Application Virtualization (Server App-V) package named Package1 of an application named Appl. Package1 will be included in a System Center 2012 R2 Virtual Machine Manager (VMM) service template.

You need to configure Package1 to ensure that you can modify the settings of App1 from the properties of the service template.

What should you do?

- A. From the Server App-V Sequencer, click Add Deployment Configuration Item.
- B. Modify the SFT file of Package1.
- C. From the Server App-V Sequencer, configure the Properties of the package.
- D. Modify the Open Software Description (OSD) file of Package1.

Correct Answer: A

---

## QUESTION 9

You need to identify which Microsoft SharePoint product or products support the planned deployment of the System Center 2012 Service Manager Self-Service Portal. Which product or products should you identify? (Each correct answer

presents a complete solution. Choose all that apply.)

- A. SharePoint 2010 for Internet Sites Enterprise
- B. SharePoint Foundation 2010
- C. SharePoint Server 2010
- D. SharePoint Server 2013

Correct Answer: ABC

---

#### QUESTION 10

You need to recommend a solution to control the provisioning of the virtual machines by the research department users. The solution must meet the requirements for managing services in the private cloud. What should you include in the recommendation? (More than one answer choice may achieve the goal. Select the BEST answer.)

- A. VMM placement rules and Service Manager service offerings
- B. VMM custom properties and Orchestrator runbooks
- C. VMM placement rules and capability profiles
- D. A separate VMM cloud for the research department users

Correct Answer: C

---

#### QUESTION 11

A company has a server that has System Center 2012 R2 Virtual Machine Manager (VMM) installed. A specific user must be able to create logical networks in VMM. You need to grant the user the required permissions. What should you do?

- A. in VMM, grant the user the Administrator role.
- B. in VMM, create a self-service role that has the Deploy action assigned.
- C. in Server Manager, add the user to the local Administrators group.
- D. In VMM, grant the user the Tenant Administrator role.

Correct Answer: A

<http://technet.microsoft.com/en-us/library/gg610588.aspx> Account requirements To complete this procedure, you must be a member of the Administrator or the Delegated Administrator user role. Delegated administrators can only associate a logical network to host groups that are included in their administrative scope.

---

## QUESTION 12

Your company has a private cloud that is managed by using a System Center 2012 infrastructure.

You plan to monitor a Microsoft .NET application named App1 that is hosted in the private cloud.

You need to import the management packs required to monitor the application.

Which management packs should you import?

A. the Windows Server 2008 Operating System (Monitoring) management pack and the Operations Manager APM Web IIS 7 management pack

B. the Windows Server 2008 Operating System (Discovery) management pack and the Windows Server 2008 Internet Information Services Management Pack

C. the Windows Server Internet Information Services 7 Management Pack and the Operations Manager APM Web IIS 7 management pack

D. the Windows Server Operating System management pack and the Windows Server 2008 Internet Information Services Management Pack

Correct Answer: C

Import the IIS 7.0 management pack (Microsoft.Windows.InternetInformationServices.2008.mp) and the Operations Manager APM Web IIS 7 management pack (Microsoft.SystemCenter.Apm.Web.IIS7.mp). The Microsoft.SystemCenter.Apm.Web.IIS7.mp management pack is included in the download package in the Management Packs folder--it is not available on the management pack catalog. For information about importing management packs, see Import a Management Pack. Additionally, ensure that IIS 7.0 websites, applications, and services have been discovered. <http://technet.microsoft.com/en-us/library/hh543994.aspx>

To Read the [Whole Q&As](#), please purchase the [Complete Version](#) from [Our website](#).

## Try our product !

**100%** Guaranteed Success

**100%** Money Back Guarantee

**365** Days Free Update

**Instant Download** After Purchase

**24x7** Customer Support

Average **99.9%** Success Rate

More than **800,000** Satisfied Customers Worldwide

Multi-Platform capabilities - **Windows, Mac, Android, iPhone, iPod, iPad, Kindle**

## Need Help

Please provide as much detail as possible so we can best assist you.

To update a previously submitted ticket:



 <p><b>One Year Free Update</b> Free update is available within One Year after your purchase. After One Year, you will get 50% discounts for updating. And we are proud to boast a 24/7 efficient Customer Support system via Email.</p>	 <p><b>Money Back Guarantee</b> To ensure that you are spending on quality products, we provide 100% money back guarantee for 30 days from the date of purchase.</p>	 <p><b>Security &amp; Privacy</b> We respect customer privacy. We use McAfee's security service to provide you with utmost security for your personal information &amp; peace of mind.</p>
---	---	--

Any charges made through this site will appear as Global Simulators Limited.

All trademarks are the property of their respective owners.