

**Exam** : **642-971**

**Title** : Data Center Networking  
Infrastructure Design  
Specialist

**Version** : DEMO

1. What advantage does InfiniBand have over Gigabit Ethernet in HPC environments?

- A. lower latency
- B. simpler cabling
- C. longer distance support
- D. more sophisticated traffic management

Correct: A

2. Which data center network-architecture change is a result of the adoption of blade and 1-RU server technologies?

- A. Layer 3 fault domains growing larger
- B. Layer 2 fault domains growing larger
- C. Layer 3 fault domains growing smaller
- D. Layer 2 fault domains growing smaller

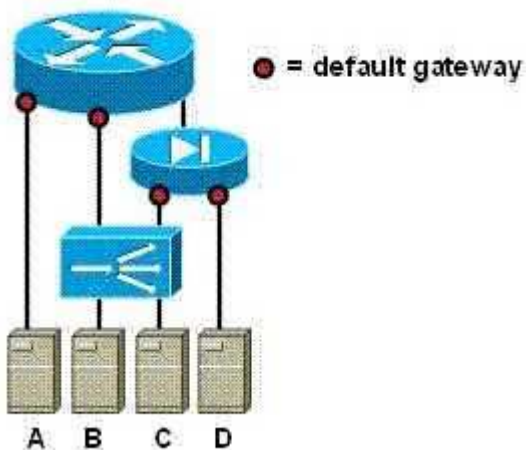
Correct: B

3. A very large blade-server deployment has high throughput requirements for both data and storage networks. Which access layer option would you recommend?

- A. blade server Ethernet switch with Cisco SFS 3000 Series Multifabric Switch
- B. blade server InfiniBand switch with Cisco SFS 3000 Series Multifabric Switch
- C. blade server Ethernet switch that is connected to Cisco Catalyst 4948 top-of-rack switch
- D. blade server Ethernet switch that is connected to Cisco Catalyst 6500 Series end-of-rack switch

Correct: B

4. Refer to the exhibit. Each letter (A-D) represents a model for placement of a default gateway. Which model allows the maximum number of application and security services?



- A. model A
- B. model B
- C. model C
- D. model D

Correct: C

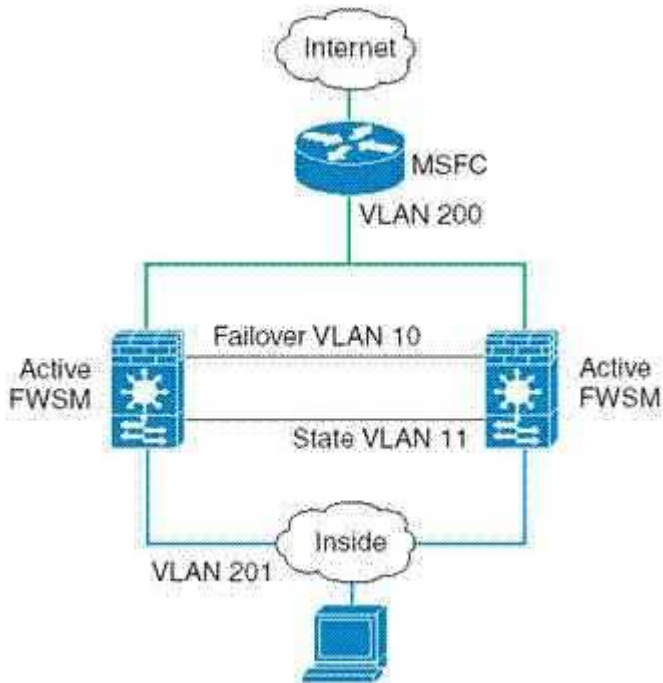
5. Which three of the following service modules can be deployed in redundant pairs with active/active failover? (Choose three.)

- A. ACE
- B. CSM
- C. NAM

- D.IDSM
- E.FWSM
- F.SSLSM

**Correct:A D E**

**6.Refer to the exhibit. What do you need to configure to prevent spanning-tree loops from occurring between the two FWSMs?**



- A.FWSMs in transparent mode
- B.ethertype ACLs to allow BPDUs
- C.FWSMs in multiple-context mode
- D.failover and state interfaces on the same VLAN

**Correct:B**

**7.How is FCIP traffic marked with DSCP values?**

- A.The Cisco MDS 9000 Series Multilayer Switch marks one DSCP value per FCIP tunnel.
- B.The Cisco MDS 9000 Series Multilayer Switch marks two DSCP values per FCIP tunnel.
- C.The aggregation layer Ethernet switch marks one DSCP value per FCIP tunnel.
- D.The aggregation layer Ethernet switch marks two DSCP values per FCIP tunnel.

**Correct:B**

**8.Which two security vulnerabilities does the FWSM application inspection engine mitigate? (Choose two.)**

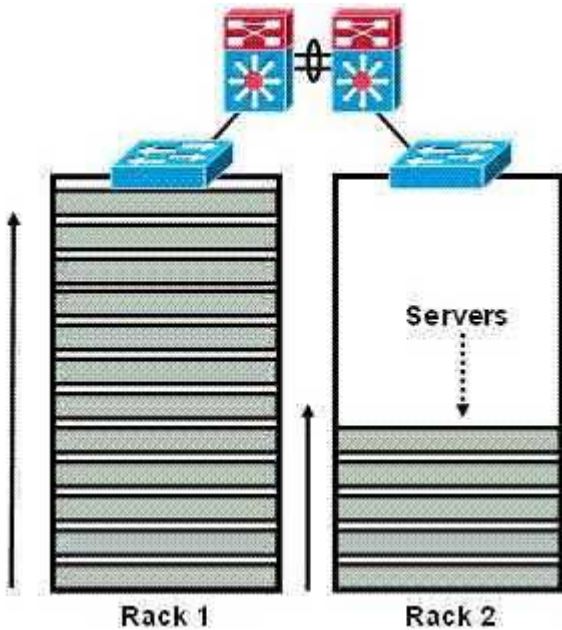
- A.DoS attacks
- B.DDoS attacks
- C.SQL injection
- D.cookie altering
- E.web server worms

**Correct:C D**

**9>Your customer plans to deploy FWSM and IDSM modules in the aggregation layer. Which design should you avoid?**

- A.Layer 3
- B.InfiniBand C.Layer 2
- loop-free D.Layer 2
- looped square E.Layer 2
- looped triangle **Correct:A**

**10.Refer to the exhibit. Your customer is filling server racks sequentially, filling one rack before beginning the next. Which two access layer designs present challenges in this environment? (Choose two.)**



- A.Layer 3
- B.Layer 2 loop-free U C.Layer
- 2 looped square D.Layer 2
- looped triangle E.Layer 2 loop-
- free inverted U **Correct:A B**

**11.You are a Cisco engineer of Pass4sure.com. You are implementing the Cisco Nexus environment for the company, so which two are requirements of FCoE in it? (Choose two.)**

- A.Spanning Tree Protocol
- B.Use of jumbo frames
- C.TCP-driven retransmissions for flow control
- D.IEEE 802.3x extensions to enable lossless Ethernet

**Correct:B D**

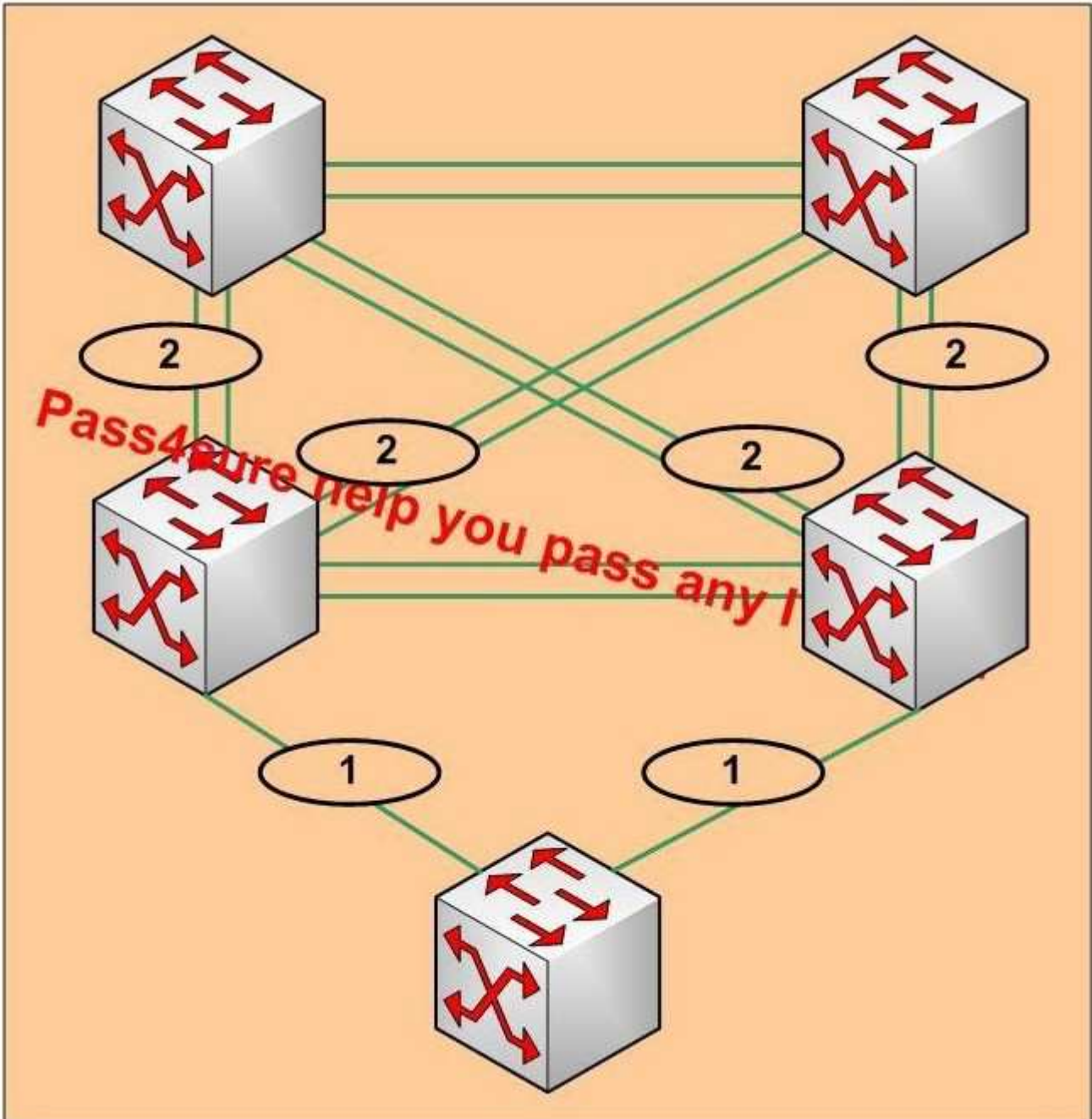
**12.You are the senior desktop administrator for Pass4sure.com. You are deploying network for the company. With your experience, which of following two Cisco service modules can be implemented in redundant pairs with active-active failover? (Choose two.)**

- A.Cisco network analysis module
- B.Cisco ACE Application Control Engine
- C.Cisco Firewall Services Module (FWSM)

D.Cisco Catalyst 6500 Series SSL Services Module (CVDM-SSLSM)

Corre(;t:B C

13-You are a Cisco engineer of Pass4sure\_com\_ You are configuring the network for the company\_ The numbers in the ovals stand for the number of ports in each PortChannel(Refer to the exhibit)- If VSS is deployed in the top four switches, as far as you know,how many ports at most that the virtualPortChannel in the core can have ?



- A.two
- B.four
- C.six
- D.eight

Corre(;t:O

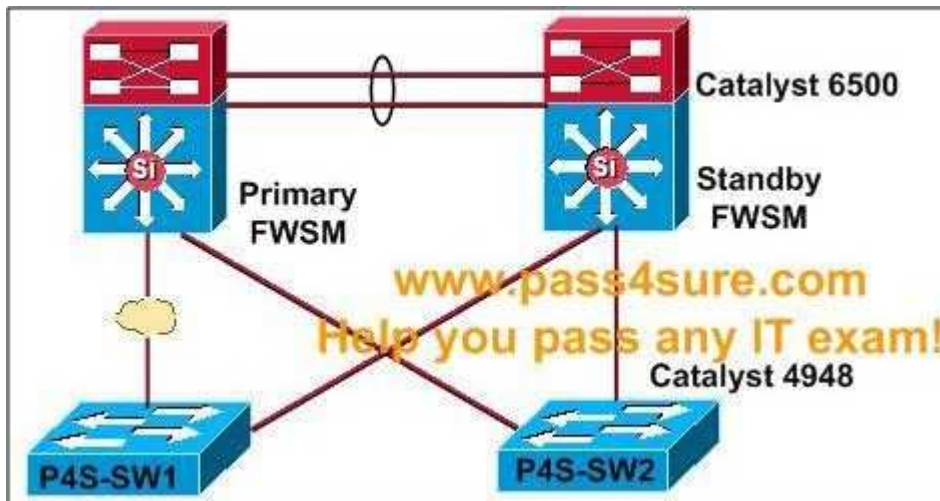
14-Which service module configuration is recommended to automatically detect and block traffic

from malicious hosts?

- A.FWSM
- B.IDSM that is deployed in IDS mode
- C.IDSM that is deployed in IPS mode
- D.FWSM that is coupled with the NAM

**Correct:C**

**15.You are the senior desktop administrator for Pass4sure.com. A customer met a trouble: A failure occurs on one of the access layer uplinks(Refer to the exhibit). With your experience, which Layer 2 topology can cause a break in connectivity between the FWSMs?**



- A.looped square
- B.looped triangle
- C.loop-free U
- D.loop-free inverted U

**Correct:C**

**16.You work as the network administrator at Pass4sure.com. And you are familiar with Cisco product, so as much as you know, which Cisco product is implemented for content routing purposes?**

- A.Cisco ACE GSS
- B.Cisco ACE Module
- C.Cisco ACE appliance
- D.Cisco Catalyst 6500 Series Switches

**Correct:A**

**17.You work as a systems administrator at Pass4sure.com. You deploy the network for the company by using the default VDC high availability options in the Cisco Nexus 7010 Switch, what will happen then?**

- A.The VDC is deleted, and no further action is performed.
- B.If dual supervisors are in use, a supervisor switchover is forced.
- C.The VDC is deleted and then re-created with the startup configuration.
- D.If a single supervisor is in use, a graceful restart is forced.

**Correct:B**

**18.You are a help desk trainee for Pass4sure.com. One of your customers use the Cisco SFS**

**family of products to provide server-side InfiniBand integration, but as far as you know, which two Cisco products should be implemented to make up the solution? (Choose two.)**

- A.Fibre Channel Host Channel Adapters
- B.InfiniBand switch modules
- C.Fibre Channel switch modules
- D.InfiniBand HCA card for IBM and Dell servers

**Correct: B D**

**19.You work as a systems administrator at Pass4sure.com. In order to realize to service multicast traffic in a data center environment, what three of following options are effective ways? (Choose three.)**

- A.deploying VRFs per address family
- B.configuring service modules in transparent or bridged mode
- C.configuring IGMP/PIM in the Cisco Catalyst 6500 Series FWSM
- D.configuring IGMP/PIM in the MSFC on a Cisco Catalyst 6500 switch

**Correct: B C D**

**20.Which problem can result from end-of-rack designs?**

- A.lower reliability
- B.airflow restriction
- C.more devices to manage
- D.complex spanning-tree design

**Correct: B**

# Trying our product !

- ★ **100%** Guaranteed Success
- ★ **100%** Money Back Guarantee
- ★ **365 Days** Free Update
- ★ **Instant Download** After Purchase
- ★ **24x7** Customer Support
- ★ Average **99.9%** Success Rate
- ★ More than **69,000** Satisfied Customers Worldwide
- ★ Multi-Platform capabilities - **Windows, Mac, Android, iPhone, iPod, iPad, Kindle**

## Need Help

Please provide as much detail as possible so we can best assist you.

To update a previously submitted ticket:



 <b>One Year Free Update</b> <p>Free update is available within One Year after your purchase. After One Year, you will get 50% discounts for updating. And we are proud to boast a 24/7 efficient Customer Support system via Email.</p>	 <b>Money Back Guarantee</b> <p>To ensure that you are spending on quality products, we provide 100% money back guarantee for 30 days from the date of purchase.</p>	 <b>Security &amp; Privacy</b> <p>We respect customer privacy. We use McAfee's security service to provide you with utmost security for your personal information &amp; peace of mind.</p>
---	---	--

## Guarantee & Policy | Privacy & Policy | Terms & Conditions

Any charges made through this site will appear as Global Simulators Limited.

All trademarks are the property of their respective owners.

Copyright © 2004-2014, All Rights Reserved.