

100% Money Back
Guarantee

Vendor: Avaya

Exam Code: 6101.1

Exam Name: Avaya Ethernet Routing Switch
Implementation Exam

Version: Demo

QUESTION NO: 1

How many Ethernet Routing Switch (ERS) 4500 switches can be connected in a single stack?

- A. 4
- B. 8
- C. 9
- D. 10

Answer: B

QUESTION NO: 2

An engineer needs to assign an IP address of 172.25.10.31 for out of band management of an Ethernet Routing switch (ERS) 8600 switch a subnet mask of 255.255.255.192.

Which command line interface (CLI) command should the engineer use?

- A. ERS8600:5# config bootconfig set ip 172.26.10 36/26
- B. ERS8800:5 # config bootconfig set ip 172.25.10 36/27
- C. ERS8600:5# config bootconfig net mgmt ip 172.25.10.36/27
- D. ERS8600:5# config bootconfig net mgmt ip 172.25.10.36/26

Answer: D

QUESTION NO: 3

What is the front panel port configuration for the Ethernet Routing Switch (ERS) 2550T-PWR?

- A. 48 10/100 BaseT ports (PoE on 48 ports)
Two combo 10/100/1000BaseT or SFP port
- B. 48 10/100BaseT ports (PoE on 24 ports)
two combo 10/100/1000BaseT or SFP port
- C. 50 10/100BaseT ports (PoE on 25 ports)
two combo 10/100/1000BaseT or SFP port
- D. 50 10/100BaseT ports (PoE on 50 ports)
two combo 10/100/1000BaseT or SFP port

Answer: B

QUESTION NO: 4

A technician is configuring Multi Link trunking (SMLT) for an Ethernet routing switch (ERS) 8600 switch cluster.

To ensure the fastest possible recovery time, which feature should be avoided?

- A. VLACP
- B. MLT
- C. 802.3 ad
- D. SLPP

Answer: A

QUESTION NO: 5

A technician wants to use the New Unit Quick Configuration feature to add new units to a stack of Ethernet Routing Switch (ERS) 5000 switches without. As well as enabling the feature, what else must be done to use the New Unit Quick Communication feature?

- A. Save a template on the base unit
- B. Save a template on the backup unit
- C. Insert a new switch in the stack
- D. Apply the feature license

Answer: C

QUESTION NO: 6

As stated in RFC 2338. (Virtual Router Redundancy Protocol) VRRP management problems can occur if the address used by the management station is used incorrectly.

Which two statements describe how to avoid management problems? (Choose two)

- A.** A VRRP interface **MUST** accept packets addressed to the IP address (es) associated with the virtual router if it is not the IP address owner (priority = 255)
- B.** A VRRP interface **MUST NOT** accepts packets addressed to the IP address (es) associated with the virtual router if it is the IP address owner. (Priority=255)
- C.** A VRRP interface **MUST NOT** accept packets addressed to the IP address (es) associated with the virtual router if it is not the IP address owner (priority = 255)
- D.** A VRRP interface **MUST** accept packets addressed to the IP address (es) associated with the virtual router if it is the IP address owner (priority = 255)

Answer: C,D

QUESTION NO: 7

A technician is configuring 802.1 Q tagging, VLACP with short timeout, untagged frames to be discarded.

Which part of the network is being configured?

- A.** layer 2 core
- B.** layer 3 core
- C.** the edge
- D.** the uplinks

Answer: D

QUESTION NO: 8

Where is the rate-limit feature of the Converged Campus architecture limited?

- A.** uplink ports on the core switches
- B.** access ports on the edge switches
- C.** inter Switch Trunk ports on the core switches
- D.** uplink ports on the edge switches

Answer: A,B,D

We need to rate limit on access to avoid over utilisation by a single host/server as well as from access to upwards so there if there is some issue (broadcast storm or else) that should not be replicated to rest of switching cloud.

QUESTION NO: 9

A technician is implementing a new network that contains eight Ethernet routing switch (ERS) 8600 switches and uses advanced features.

Where are two possibilities for generating license? (Choose two)

- A.** one individual advanced feature license for each ERS 8600 chassis
- B.** one multi-chassis license using multiple MAC addresses
- C.** one advanced feature license for the network
- D.** one premier feature license for the network
- E.** one site license per ERS 8600

Answer: C,E

QUESTION NO: 10

Consider the following deployment requirements

Support 40 100 Mb/s VoIP telephones, each with a power requirement of 6 Watt Support 40 directly connected 1000 Mb/s Ethernet workstations with UTP cable

Support four 1Gb/s Ethernet uplinks to the core switch using multimode fiber.

Which configuration is the minimum hardware required for an Ethernet Routing Switch (ERS) 8306 chassis that will support the above requirements?

- A.** Two 8348TX-PWR
- One 8393SF

-
- B.** One 8348GTx
One 8348Tx-PWR
One 8393SF
 - C.** One 8348GTx
One 8348Tx-PWF
One 8308 XL
One 8393SF
 - D.** Two 8348GTx-PWF
One 8308XX
One 8393SF

Answer: B

QUESTION NO: 11

During a power-on or cold-start sequence, at which stage can the flags to change the operational environment of the switch be set?

- A.** boot monitor prompt
- B.** image search
- C.** PC system test
- D.** boot configuration prompt

Answer: A

QUESTION NO: 12

Ethernet Routing Switch (ERS) 5500 supports a resilient stacking architecture using FAST Stack technology with this stacking capability, what is the total stacking bandwidth for a full stack of eight switches?

- A.** 400 Gbps
- B.** 640 Gbps
- C.** 720 Gbps
- D.** 1.15 Tbps

Answer: B

QUESTION NO: 13

With release 4.0 or higher software on the Ethernet routing switch (ERS) 8300, an advanced routing license is required to enable certain features.

Which two statements are true about the Advanced Routing License process and supported features for the ERS 8300? (Choose two.)

- A. the Advanced Routing License supports QoS, SMLT, VRRP and OSPF
- B. the Advanced Routing License supports SMLT, VRRP, OSPF, PIM-SM. and SLPP
- C. To protect against security breaches, the ERS 8300 allows only a primary path for the license file
- D. To protect against system flash failure, the ERS 8300 allows a primary, secondary, and tertiary path for the license file.

Answer: B,D

QUESTION NO: 14

Consider the following port conditions on an Ethernet Routing Switch (ERS) 8648GTRS
10/100/1000 Ethernet I/O module left LED -green Right LED - flashing green

What is the status of the port?

- A. The link speed is 100 Mbps. and the port is disabled.
- B. The link speed is 1000 Mbps, and the port is disabled
- C. The link speed is 100 Mbps. and the port is passing traffic.
- D. The link speed is 1000 Mbps. and the port is passing traffic.

Answer: C

QUESTION NO: 15

Set of procedures will upgrade the boot monitor on an Ethernet Routing switch (ERS) 8600 with a single 8692SF module?

- A. Copy the new image to flash
Activate new image with SF module in service
- B. Copy the new Image to flash
Boot the new image
- C. Modify the boot choice for run-time image
- D. Boot the new image
- E. Copy the new image to flash
Modify the boot choice for run-time image
Boot the new image

Answer: D

QUESTION NO: 16

When multiple VLANs are used, DHCP relay is required to get the DHCP information from the end user VLAN to the DHCP server (which would normally sit on core server VLAN)

Which statement about how to enable DHCP relay for a VLAN is true?

- A. The physical VLAN IP address is used as the DHCP relay agent
- B. the IP address of the DHCP relay agent is used
- C. the IP address of the core server VLAN is used.
- D. The virtual VLAN IP address is used as the DHCP relay agent

Answer: D

QUESTION NO: 17

A network has some Ethernet Routing Switch (ERS) 5500 switches licensed at the advanced level for Release 6.2. A technician implementing Protocol independent Multicast - Sparse Mode (PIM-SM) Which licensing requirement applies?

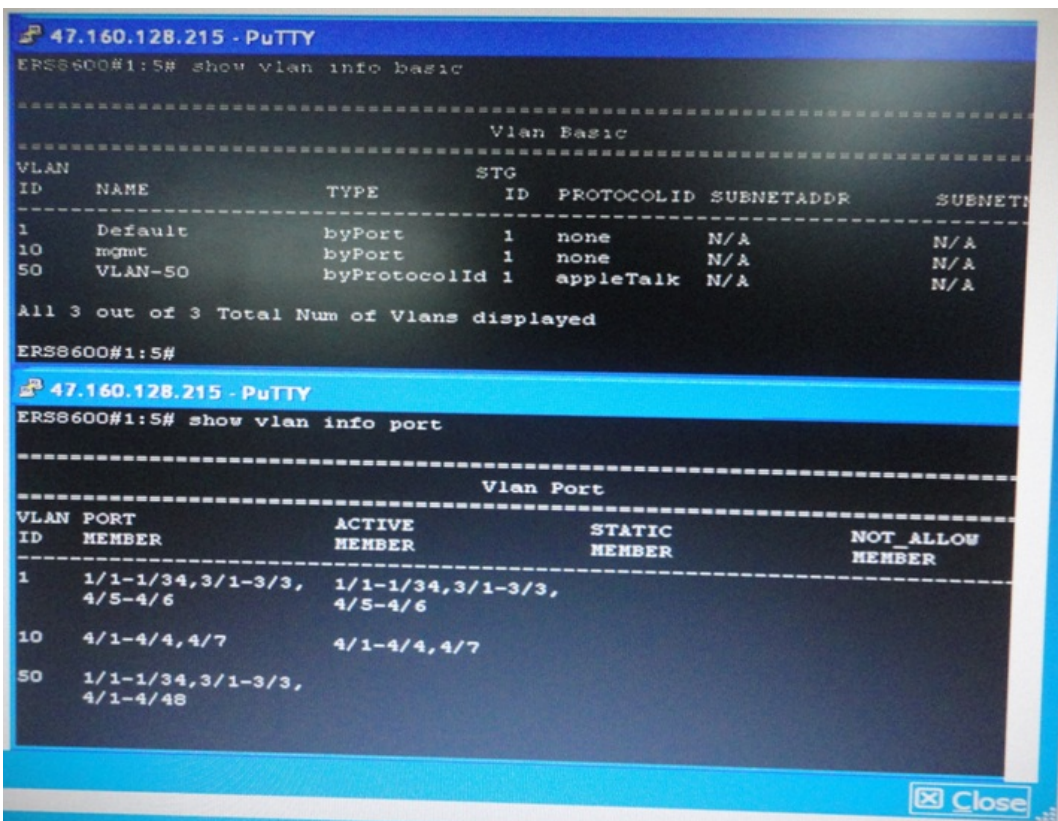
- A. the PIM-SM is already covered by the existing advanced feature license

- B. the PIM-SM can only be licensed on ERS 5510 models
- C. the PIM-SM is included in the base license with release 6.2
- D. A Premier license is needed

Answer: C

QUESTION NO: 18

Click on the exhibit button



After checking the VLAN configuration using the show vlan info basic and the show vlan info port commands, there are no ACTIVE MEMBER ports for VLM4-50.

What is causing this problem?

- A. The ports have not been configured as active for this VLAN
- B. AppleTalk Protocol VLANs do not have ACTIVE MEMBERS
- C. The default setting for this type of VLAN is potential and no AppleTalk traffic has entered any of these ports

D. There are no devices connected to these ports.

Answer: C

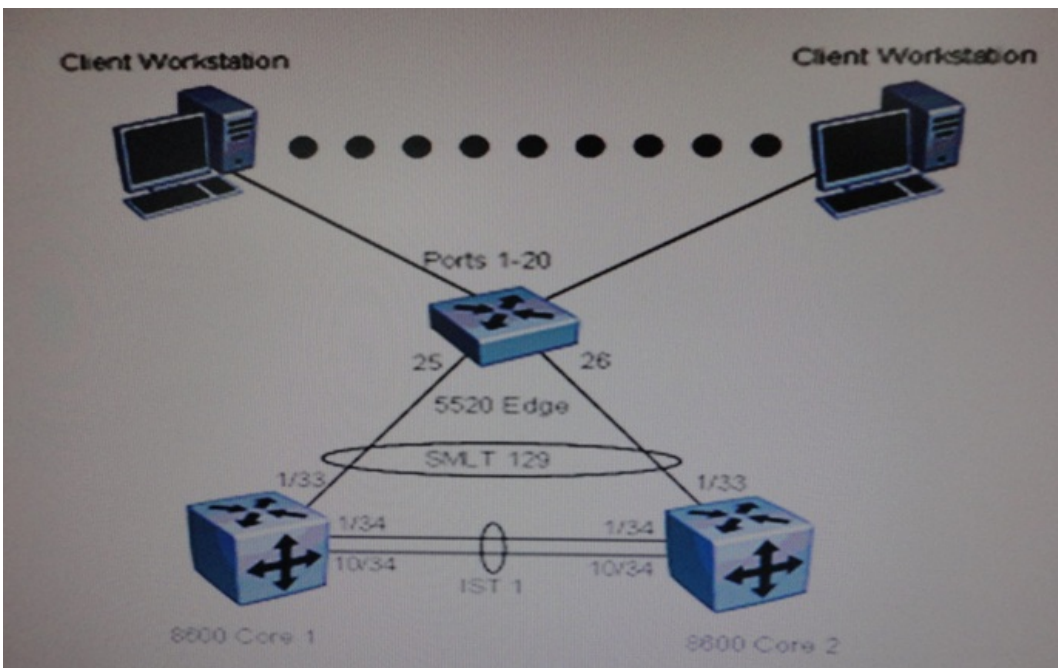
QUESTION NO: 19

What is a characteristic of Routed Split Multilink Trunking (RSMLT) configuration?

- A. RSMLT is only configured on edge SMLT connections.
- B. RSMLT uses priority values to distinguish between the primary and backup routers.
- C. RSMLT routers are implemented with VRF-Lite routers.
- D. RSMLT is always used in conjunction with routing protocols and SMLT connections.

Answer: D

QUESTION NO: 20



Which two pairs of commands will configure spanning tree on the edge switch? (Choose two)

A. 5520-24T (config) # interface fastethernet 25-26

5520-24T (config-if) # spanning-tree learning fast
B. 5520-24T (config) # interface fastethernet 25-26
5520-24T (config-if) # spanning tree learning disable
C. 5520-24T (config) # interface fastethernet 1-20
5520-24T (config-if) # spanning tree learning disable
D. 5520-24T (config) # interface fastethernet 1-20
5520-24T (config-if) # spanning-tree learning fast

Answer: A,C

As we need to disable SPT on access port as we are not expecting BPDUs

QUESTION NO: 21

An Ethernet routing switch (ERS) 4550T-PWR has been deployed with a single AC power supply and is currently supporting 20 VoIP telephones with power over Ethernet (PoE). each with a power draw of 8 Watts when offhook. The network engineer has requested the addition of 5 Wireless Access points (WAPs) to the ERS 4550T-PWR. Each WAP supports PoE and requires 12 Watts of power.

What is the outcome of the addition of the WAPs to the ERS 4550T-PWR?

- A.** The 4550T-PWR will have sufficient power to support the 20 VoIP telephones and 5 WAP devices,
- B.** The addition of a second AC power supply will be required to provide sufficient power to the ERS -4550T-PWR to Support all of-the PoE devices.
- C.** The addition of a Redundant Power Supply 15 will be required to provide sufficient power to ensure the VoIP phones and WAP function property.
- D.** the power requirement of the WAP exceeds the individual port maximum power rating of the ERS 4550T-PWR and will therefore require an external power source.

Answer: A

QUESTION NO: 22

Which steps are initial steps required to configure the Ethernet Routing Switch (ERS) 8600 in a clustered basic core configuration? (Choose three.)

-
- A. create VLANs
 - B. create the IST
 - C. enables OSPF
 - D. configure SMLT

Answer: A,B,D

We can enable OSPF later as this is for Routing

QUESTION NO: 23

An Ethernet Routing Switch (ERS) 8600 for Virtual Router Redundancy Protocol (VRRP) is being configured. Which CU command would cause this switch to be the VRRP master?

- A. ERS8600:5# config vlan 100 ip vrrp 100 priority 250
- B. ERS8600:5ff config vlan 100 ip vrrp 100 priority 1
- C. ERS860Q:5# config vlan 100 ip vrrp 100 master
- D. ERS8600:5# config vlan 100 ip vrrp 100 priority master

Answer: A

QUESTION NO: 24

A technician is configuring a Link Aggregation connection from a stack of Ethernet Routing Switch (ERS) 5500 to a core pair of ERS 8600 switches.

Which statement about the correct uplink configuration is true?

- A. Distribute uplinks across different ERS 5500 switches in the stack.
- B. Disable auto negotiation and replace it with VLACP to identify single fiber fault failure
- C. Use unique MLT IDS for each stack of edge ERS 5500 switches
- D. Enable Spanning Tree Protocol for the MLT when using it with SMLT in the core of the network.

Answer: A

QUESTION NO: 25

Winch CU command is used to validate that synchronization for High Availability mode is correct?

- A. show ha
- B. show ha-all
- C. show ha-state
- D. show ha-sync

Answer: B

QUESTION NO: 26

After issuing a show mlt list stats (CLI) or show ist Stat (ACLI) command, it is determined that the running type is normal MLT and not 1ST

What are two causes of the IST not running properly? (Choose two)

- A. The IST is not enabled on both switches.
- B. The MLT ID does not match on both switches.
- C. The peer IP address is not the address of the peer switch IST VLAN.
- D. The peer IP addresses have to be 192.168.1.1/30 and 192.168.1.2/30.

Answer: B,C

QUESTION NO: 27

A customer has purchased some Ethernet Routing Switch (ERS) 5600 switches must integrate two ERS 5600 units into existing stack of ERS 5500 switches.

What is the procedure for the integration of the new ERS 5600?

- A. with power applied to the slack, change the existing ERS 5500 base unit to "Non Base Unit" in

mixed stack operation Integrate the two new ERS 5600 to the stack with them set as “Base Unit” in mixed stack operation Reboot the stack.

B. Remove the AC from the stack, integrate the two ERS 5600 units into the existing 5600 set to “base unit” and one ERS 5600 set to “non base unit” set the existing ERS 5500 base unit to “non base unit” apply power to stack.

C. With power applied to the stack, integrate one ERS into the stack as non base unit in mixed stack operational mode. Change the existing ERS 5500 base unit to “non base unit” and set the new 5600 to “base unit”. Reboot the stack integrate the second ERS 5600 in mixed stack operational mode.

D. With power applied to the stack, integrate one ERS into the stack as non base unit in mixed stack operational mode. After the two ERS 5600 units have obtained their configuration from the ERS 5500 base unit, change the ERS 5500 to “non base unit” and set one ERS 5600 to “base unit”. Reboot the switch stack.

Answer: D

QUESTION NO: 28

What is the maximum number of Gigabit Ethernet ports on a single Ethernet Routing Switch (ERS) 8300 Input/Output module?

- A. 16
- B. 24
- C. 48
- D. 50

Answer: C

QUESTION NO: 29

Consider four software upgrade events on an Ethernet Routing Switch (ERS) 2500 series switch:

1. Upgrade the software image
2. The System Reboots
3. Backup the binary configuration to a TFTP server

4. Upgrade the boot/diagnostic code, if the new version is available

Which sequence of events will correctly upgrade the software?

- A. 3.2.4. 1
- B. 3.4.2.1
- C. 3.2.1.4
- D. 1.2.4.3
- E. 1.4.2.3

Answer: B

QUESTION NO: 30

Avaya recommends using RSMLT edge in place of VRRP with Backup Master, when available what are two valid reasons for using RSMLT edge? (Chouse two)

- A. the VRRP hold down timer cannot be set high enough to update the complete routing table when Layer 2 access requirements are high.
- B. RSMLT edge provides support for application where more than 255 redundant default gateways (VRRP limit) need to be provided.
- C. RSMLT edge allows the cluster to be configured to discard untagged frames in 1ST and SMLT ports.
- D. RSMLT edge is easier to configure and lightens the CPU load,
- E. RSML T dynamically balances the CPU load across the switch cluster.

Answer: B,D

QUESTION NO: 31

A technician has complied me configuration of an Ethernet Routing (ERS) 5520 to and now must transfer a backup copy of configuration file to server.

Which command is used to accomplish this task?

- A. 5520.24T-PWR> copy config ftp filename ers5520 config.cfg

To Read the [Whole Q&As](#), please purchase the [Complete Version](#) from [Our website](#).

Trying our product !

- ★ **100%** Guaranteed Success
- ★ **100%** Money Back Guarantee
- ★ **365 Days** Free Update
- ★ **Instant Download** After Purchase
- ★ **24x7** Customer Support
- ★ Average **99.9%** Success Rate
- ★ More than **69,000** Satisfied Customers Worldwide
- ★ Multi-Platform capabilities - **Windows, Mac, Android, iPhone, iPod, iPad, Kindle**

Need Help

Please provide as much detail as possible so we can best assist you.

To update a previously submitted ticket:



 One Year Free Update <p>Free update is available within One Year after your purchase. After One Year, you will get 50% discounts for updating. And we are proud to boast a 24/7 efficient Customer Support system via Email.</p>	 Money Back Guarantee <p>To ensure that you are spending on quality products, we provide 100% money back guarantee for 30 days from the date of purchase.</p>	 Security & Privacy <p>We respect customer privacy. We use McAfee's security service to provide you with utmost security for your personal information & peace of mind.</p>
---	---	--

[Guarantee & Policy](#) | [Privacy & Policy](#) | [Terms & Conditions](#)

Any charges made through this site will appear as Global Simulators Limited.

All trademarks are the property of their respective owners.

Copyright © 2004-2015, All Rights Reserved.