

**100%** Money Back  
**Guarantee**

**Vendor:**Nokia

**Exam Code:**4A0-C01

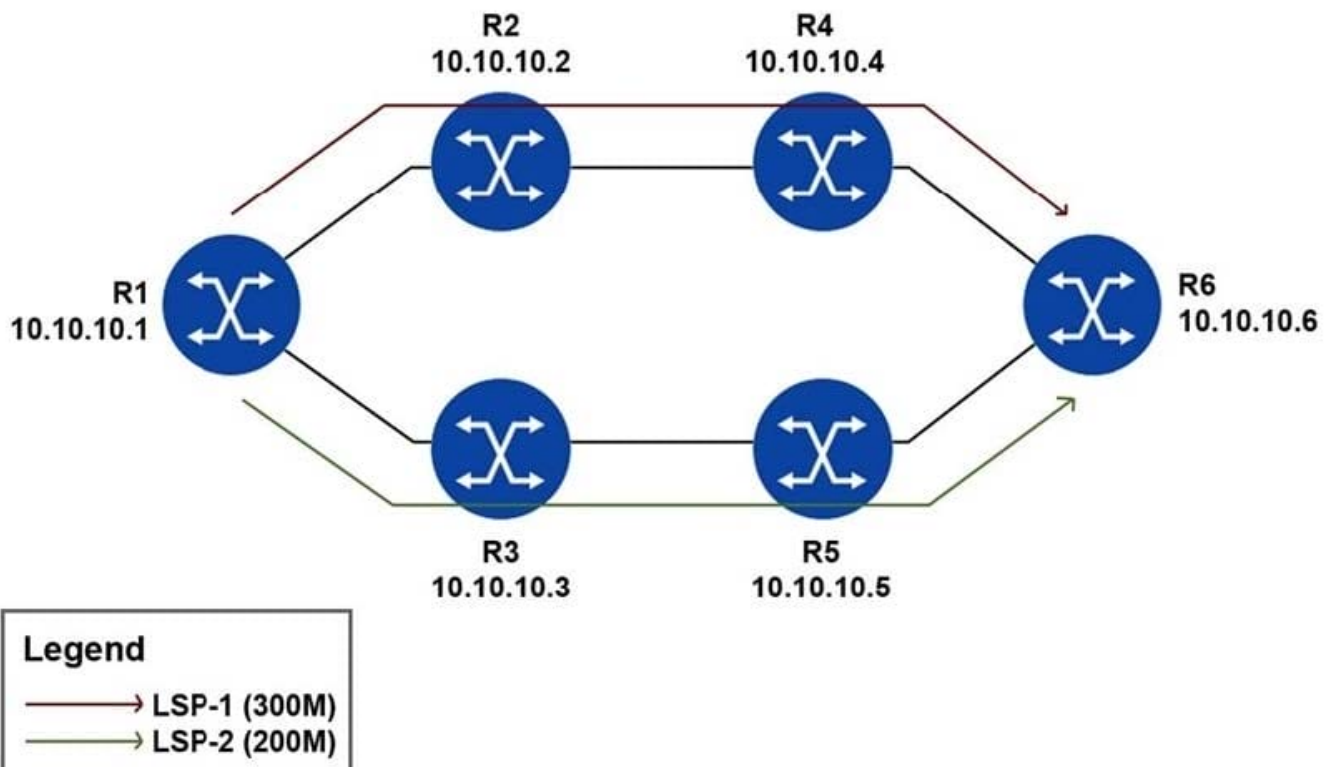
**Exam Name:**Nokia NRS II Composite Exam

**Version:**Demo

### QUESTION 1

All links have 1Gbps unreserved bandwidth initially and all LSPs have the least-fill feature enabled. After the two LSPs have been signaled as shown, two additional LSPs are configured. LSP-3 is signaled first with bandwidth of 300Mbps.

LSP-4 is signaled after with bandwidth of 400Mbps. Which paths will CSPF choose for LSP-3 and LSP-4?



- A. LSP-3 takes R1-R3-R5-R6 and LSP-4 takes R1-R2-R4-R6.
- B. LSP-3 takes R1-R2-R4-R6 and LSP-4 takes R1-R3-R5-R6.
- C. Both LSP-3 and LSP-4 take R1-R3-R5-R6.
- D. Both LSP-3 and LSP-4 take R1-R2-R4-R6.
- E. CSPF randomly chooses one of the equal cost paths for the two LSPs.

Correct Answer: C

### QUESTION 2

Static routing is to be used in a network between a corporate head office with many connected networks, and a branch office with one connection to the head office. Which of the following best describes the likely configuration?

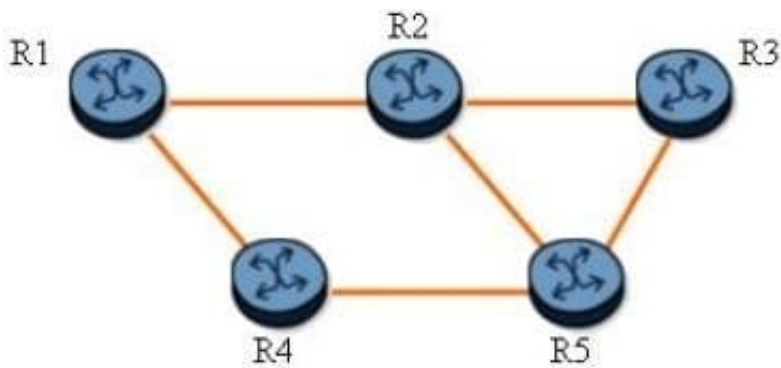
- A. The corporate head office router should have a default route and the branch site should have a more specific static route
- B. The corporate head office router and the branch office router should both have specific static routes.
- C. The corporate head office router and the branch router should both have default routes.
- D. The corporate head office router should have a specific static route and the branch office router should have a default route.

Correct Answer: D

---

**QUESTION 3**

Click on the exhibit.



The path of a fast reroute protected LSP is R1-R2-R3. Which of the following about the protected LSP path is TRUE?

- A. All routers along the path, R1, R2, and R3 can be PLRs.
- B. If the R1-R2 link fails, router R4 becomes an MP.
- C. If the R2-R3 link fails, router R3 becomes a PLR.
- D. Router R1 is the LSP head-end and can be a PLR.

Correct Answer: D

---

**QUESTION 4**

In an OSPF network, which of the following is NOT a result of manual summarization on an ABR?

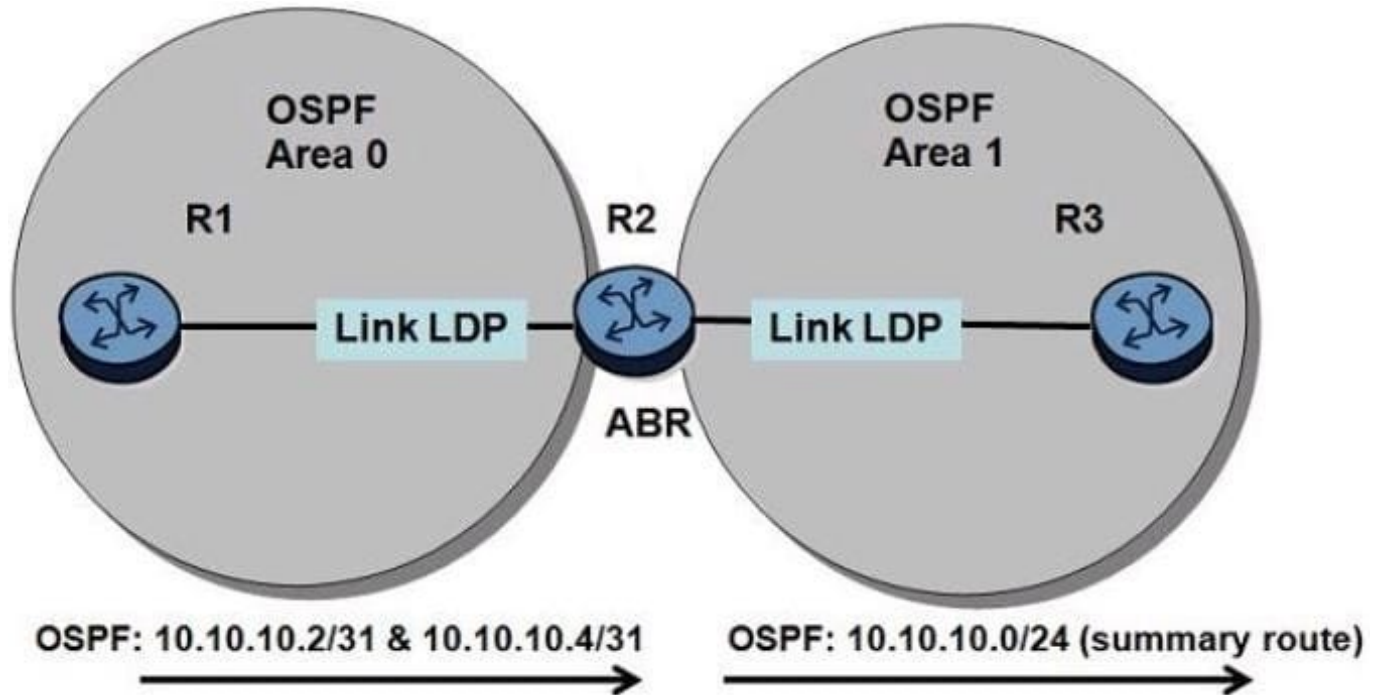
- A. It can reduce the topological database size.
- B. It can reduce the size of the route table.
- C. It can reduce the number of Summary LSAs.
- D. It can reduce the number of Router LSAs.

Correct Answer: D

---

### QUESTION 5

Click on the exhibit.



Router R2 advertises the aggregate prefix 10.10.10.0/24 into Area 1. Why would LDP aggregate-prefixmatch be enabled on router R3?

- A. To reduce the number of LDP sessions
- B. To reduce the number of LIB and LFIB entries
- C. To bypass the LDP exact prefix match rule
- D. To export summarized routes from OSPF to LDP

Correct Answer: C

---

### QUESTION 6

In MPLS, labels are distributed in the opposite direction of the data flow.

- A. TRUE
- B. FALSE

Correct Answer: A

---

### QUESTION 7

Which of the following statements is FALSE about the VPN label?

- A. The VPN label is signaled between PE devices using MP-BGP.
- B. The VPN label is swapped at each P router as a packet crosses the service provider network.
- C. The VPN label is also known as the inner label or service label.
- D. The VPN label indicates which VPRN a packet should be sent to once it reaches the egress PE.
- E. All of the above
- F. Only C and D.

Correct Answer: B

---

### QUESTION 8

Which of the following about the label stack of a VPRN is FALSE?

- A. The service label is swapped for a transport label during transport.
- B. The transport label is used to forward packets between PEs.
- C. The service label is used to identify which VPRN a packet belongs to.
- D. Labels are initially added at the ingress PE.

Correct Answer: A

---

### QUESTION 9

Which of the following is an optional parameter when configuring IS-IS protocol on a router?

- A. Configure IS-IS interfaces
- B. Enable IS-IS
- C. Configure level capabilities
- D. Specify an area address

Correct Answer: C

---

### QUESTION 10

What happens when a packet without a VLAN tag is received on a SAP provisioned with null encapsulation while an SDP vc-type is provisioned as vlan?

- A. The frame is dropped.
- B. The service ID is added as the VLAN tag.
- C. A VLAN tag of 0 is added as the provider VLAN tag
- D. The frame is forwarded with no VLAN tag

Correct Answer: C

---

#### **QUESTION 11**

An IS-IS router receives a CSNP that references an older LSP than the one in its database. What action is taken?

- A. The router sends a copy of the LSP from its database to its neighbor.
- B. The router sends a PSNP to its neighbor describing the LSP in its database.
- C. The router updates its database with the LSP and floods a copy to its other neighbors.
- D. The router sends a PSNP to its neighbor to request the LSP.

Correct Answer: A

---

#### **QUESTION 12**

Which of the following describes constraint-based routing?

- A. A mechanism that implements opaque LSAs.
- B. A mechanism that computes routes based on specified requirements.
- C. A mechanism that ensures the IGP best route is used.
- D. A mechanism that enables LDP signaling to use a route other than the IGP best route.

Correct Answer: B