

100% Money Back
Guarantee

Vendor:Alcatel-Lucent

Exam Code:4A0-106

Exam Name:Alcatel-Lucent Virtual Private Routed
Networks

Version:Demo

QUESTION 1

Complete the following statement. In a VPRN, the label signaled by RSVP-TE is used to _____.

- A. Identify the egress PE in the MPLS domain
- B. Signal the egress VPRN ID
- C. Identify the ingress PE in the MPLS domain
- D. Transport route updates between PEs

Correct Answer: A

QUESTION 2

In a VPRN, what type of logical topology is required for the BGP sessions configured in the provider core?

```
policy-statement "mp-bgp-to-rip"  
  entry 10  
    from  
      protocol rip  
    exit  
  to  
    protocol bgp-vpn  
  exit  
  action accept  
  exit  
exit  
exit
```

- A. Full mesh between all CE, PE and P devices
- B. Full mesh between PE and P devices
- C. Full mesh of P devices

- D. Full mesh of PE devices
- E. Full mesh between PE and CE devices

Correct Answer: D

QUESTION 3

Which of the following about BGP loops in a VPRN environment is FALSE?

- A. Traditional BGP loop detection mechanisms may detect a loop in the VPRN scenario, which in fact is not present.
- B. The Alcatel-Lucent 7750 SR accepts routes containing AS_PATH loops by default.
- C. When the CLI command "config>router>bgp# loop-detect discard-route" is used, the Alcatel-Lucent 7750 SR sends a notification to the remote peer and drops the BGP session.
- D. In VPRN implementations where the CE-PE protocol is BGP, it is possible for separate sites of the same customer to use the same BGP autonomous system number.

Correct Answer: C

QUESTION 4

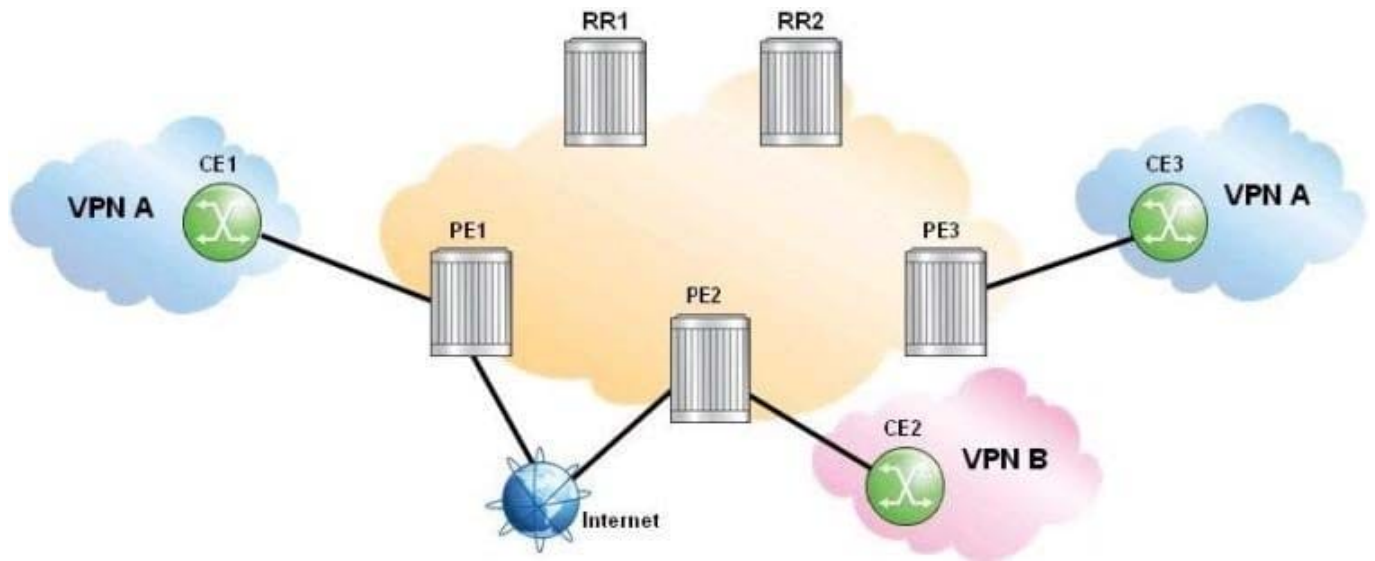
What mechanism allows routes to be shared between customers in different VPRNs?

- A. The routes to be shared are identified by common route targets
- B. The routes to be shared are identified by common route distinguishers
- C. The routes to be shared are identified by common AS numbers
- D. The routes to be shared are identified by common VPN labels

Correct Answer: A

QUESTION 5

Click the exhibit.



All sites in the displayed network require Internet access. Route reflector 1(RR1) is used for Internet routes only and route reflector 2(RR2) is used for VPN routes only. Which of the following is FALSE?

- A. BGP sessions between RR1 and PE routers support only the IPv4 address family.
- B. BGP sessions between RR2 and PE routers support only the VPN-IPv4 address family.
- C. RR2 establishes BGP sessions with PE1, PE2 and PE3.
- D. RR1 establishes BGP sessions only with PE1 and PE2.

Correct Answer: D

QUESTION 6

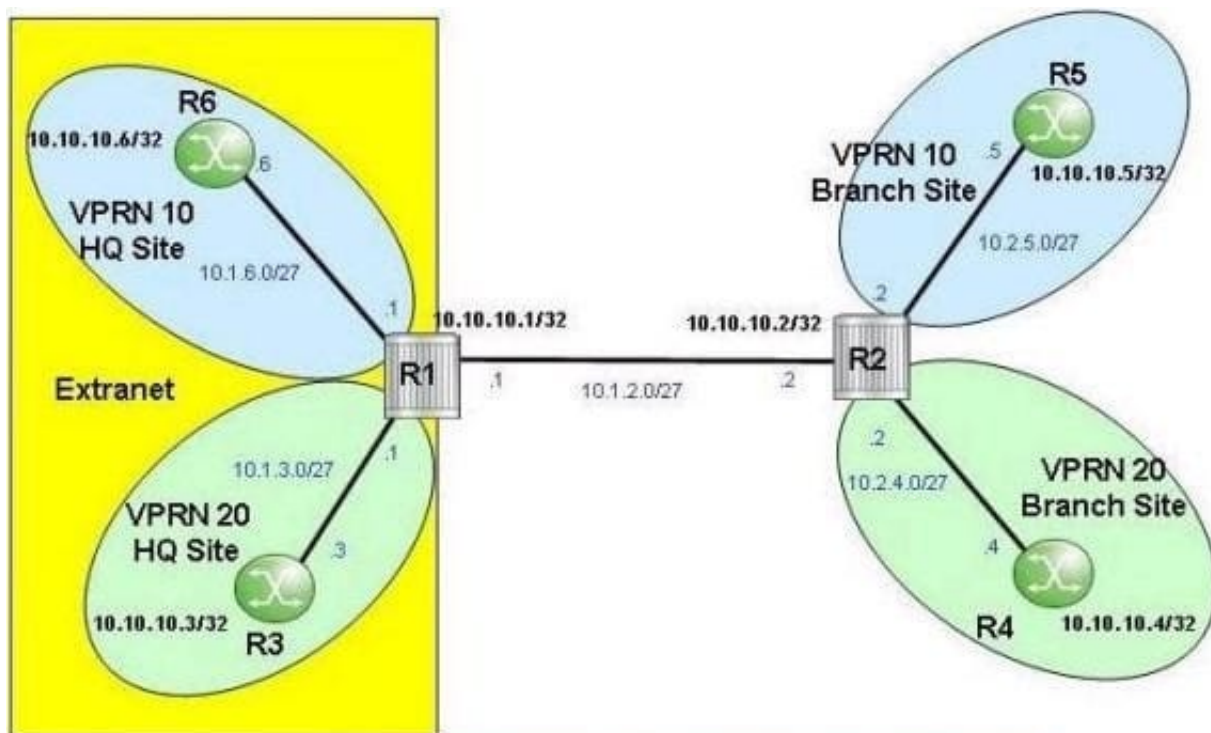
Complete the following statement. In a VPRN, the inner label is used to _____.

- A. Identify the customer network on the egress PE
- B. Establish the LSPs between PE devices
- C. Identify the egress PE in the MPLS domain
- D. Identify the customer network on the ingress PE

Correct Answer: A

QUESTION 7

Click the exhibit.



```

vprn 20 customer 20 create
  description "Green_VPN"
  autonomous-system 65530
  route-distinguisher 65530:20
  vrf-target target:65530:20

```

An extranet VPRN is configured on Alcatel-Lucent 7750 SRs. On which router(s) should the displayed configuration be applied?

- A. Router R1
- B. Router R2
- C. Routers R1 and R2
- D. Router R3
- E. Router R4

Correct Answer: B

QUESTION 8

Which of the following about inter-AS model AVPRN is TRUE?

- A. It is the most scalable of the Inter-AS models.
- B. VRF configuration is not required on the ASBRs.
- C. Most routers that support VPRN functionality do not support model A by default.

D. It is not necessary to run MPLS at the boundary between autonomous systems.

Correct Answer: D

QUESTION 9

When configuring a VPRN service on an Alcatel-Lucent 7750 SR, where should the following policy be applied?

```
A:PE1# show router 10 ospf neighbor
```

```
=====
OSPF Neighbors
=====
Interface-Name          Rtr Id          State          Pri  RetxQ  TTL
-----
toCE1-VPRN             10.10.10.241   ExchStart     1    0      36
-----
No. of Neighbors: 1
=====
```

- A. On the CE under the RIP context
- B. On the PE under the BGP context
- C. On the PE under the RIP context
- D. On the CE under the BGP context
- E. This policy is not required

Correct Answer: E

QUESTION 10

Which of the following devices would typically have VRF instances?

- A. Any CE device
- B. Any PE device
- C. Any P device
- D. Any router in the service provider core
- E. Any customer router

Correct Answer: B

QUESTION 11

Which of the following about inter-AS model C VPRN is FALSE?

- A. ASBRs exchange labeled IPv4 routes for the system addresses of PE routers.
- B. It requires a route reflector to be configured in each AS for successful operation.
- C. VPN-IPv4 routes are neither maintained nor distributed by the ASBRs.
- D. PE routers in different ASes exchange VPN-IPv4 routes directly between each other using MP-eBGP.

Correct Answer: B

QUESTION 12

When would it be appropriate to use the as-override command?

```
PE-1# show router 1 bgp neighbor
-----
Peer : 10.16.1.2          Group : BGP-neighbors
-----
Peer AS      : 65200          Peer Port    : 49620
Peer Address : 10.16.1.2
Local AS     : 65100          Local Port   : 179
Local Address : 10.16.1.1
Peer Type    : External
State       : Established     Last State   : Established
Local Family : IPv4           Remote Family : IPv4
```

- A. When sites of different VPRN customers use the same BGP AS number
- B. When sites of the same VPRN customer use the same BGP AS number
- C. When sites of different VPRN customers use different BGP AS numbers
- D. When sites of the same VPRN customer use different BGP AS numbers
- E. When the customer site AS number is the same as the provider AS number

Correct Answer: B