

100% Money Back
Guarantee

Vendor:Symantec

Exam Code:250-407

Exam Name:Administration of Altiris Client
Management Suite 7.1 / 7.x

Version:Demo

QUESTION 1

A help desk technician is contacted by a user who states that a critical application is working differently than expected. After remotely diagnosing the problem, a system administrator discovers that a key file is missing from the application directory. Which tool within Altiris Client Management Suite 7.1 / 7.x allows the administrator to resolve this issue without requiring a redeployment of the application or system?

- A. Software Management Solution
- B. Real-Time System Manager
- C. pcAnywhere
- D. Application Management

Correct Answer: C

QUESTION 2

What is required to install software with multiple dependencies?

- A. Application Metering policy
- B. Software Delivery task
- C. Package Delivery task
- D. Managed Delivery policy

Correct Answer: D

QUESTION 3

A patch administrator is preparing to deploy new patches. The administrator needs to avoid applying Microsoft updates to the wrong operating systems. How should the administrator deploy the patches?

- A. by creating a Software Update policy to distribute the updates
- B. by configuring the Import Patch Data for Microsoft task and only including applicable updates
- C. by staging the update for each operating system in the test environment
- D. by only applying updates to the Target with applicable computers when creating a Software Update policy

Correct Answer: A

QUESTION 4

A system administrator needs to add an existing software release to a specific software product. With the desired

software release selected, which method should be used to complete this process?

- A. Click the "Manage this software" link.
- B. Double-click the software release and assign it to the desired software product.
- C. Right-click the software release and select the Add to Software Product link.
- D. Right-click the software release and select the Software Catalog link and from this new page, add the software release to the desired product.

Correct Answer: B

QUESTION 5

How should an administrator automate the deployment of an application that requires input during the install?

- A. create a Visual Basic Script to apply the file and registry changes
- B. create a Visual Basic Script that simulates keystrokes to provide the required input
- C. create a Distribute Software task to run on client machines
- D. create an installer using Wise SetupCapture

Correct Answer: D

QUESTION 6

After customizing the preboot configuration files, previously created configurations need to be updated. Each file is highlighted and then the option to rebuild them is selected. After all items have been updated, the "Save" button on the policy is selected to ensure all changes are stored in the database. However, after several hours or even a day, the configuration files on the PXE servers maintain an old date instead of the new date. Why do the PXE servers have the old date?

- A. The PXE servers are missing from the policy assigned to the preboot configurations because several policies were modified at the same time.
- B. SBS Services must first be restarted to accept new policy changes from the server even though the agent has received the policy.
- C. The PXE Server configuration policy must also be updated at the same time as the preboot configurations.
- D. The preboot configuration policy changes are already saved and have been lost due to saving the policy again.

Correct Answer: D

QUESTION 7

Which protocol needs to be configured when using Real-Time System Manager to update a user's password?

- A. ASF
- B. WMI
- C. AMT
- D. WS-MAN

Correct Answer: B

QUESTION 8

The IT Security department wants to prevent all versions of a particular file sharing application from running on company computers. Where must the software resource be defined before it can be prevented from running?

- A. Software Inventory scan
- B. Software Catalog
- C. Software Library
- D. Software Update policy

Correct Answer: D

QUESTION 9

An inventory policy is set to run weekly at 18:00 on Wednesdays and is present on all computers. However, a user shuts down a laptop right after the inventory starts at 18:00 and turns it on the next morning at 08:00. When will the inventory run?

- A. Thursday morning at 08:00
- B. next Wednesday evening at 18:00
- C. Thursday evening at 18:00
- D. never

Correct Answer: B

QUESTION 10

When reviewing compliance reports for the Microsoft products, the system administrator notices that the data and bulletins have remained unchanged for two weeks. What should the administrator check to address this issue?

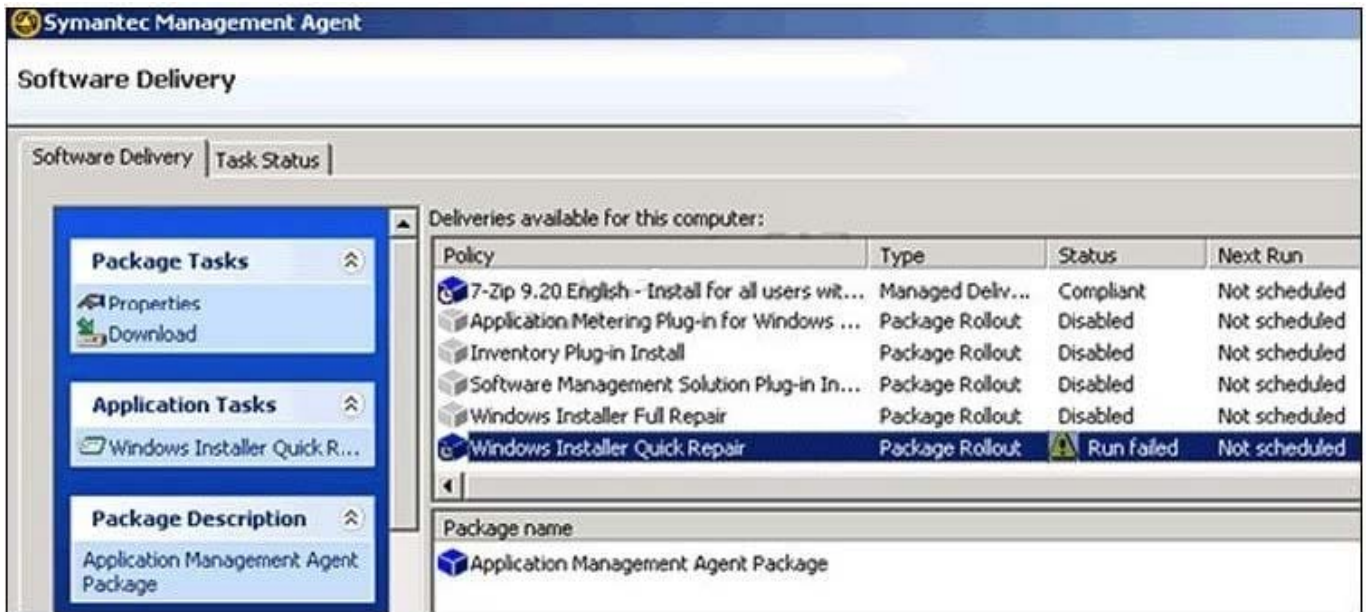
- A. Revise Software Update task
- B. Import Patch Data for Microsoft policy
- C. Patch Management Import task

D. Microsoft Compliance Update policy

Correct Answer: B

QUESTION 11

Refer to the exhibit.



A software delivery policy titled "Windows Installer Quick Repair" fails. How should a system administrator reschedule the installation of this task from the Software Delivery tab of the Symantec Management Agent?

- A. Delete the policy, re-download the task and click on Application Task to automatically re-run the task.
- B. Click on Application Task to automatically re-run the task.
- C. Click on the policy properties, select the Run History tab, right-click the run-time, and set go to automatically re-run the task.
- D. Click on the policy properties to automatically re-run the task.

Correct Answer: B

QUESTION 12

A system administrator sets up a Software Inventory policy to run every Monday between 08:00 and 10:00. After the policy has taken effect, users report that their computers are running slowly during the inventory scans. Which setting will reduce the effect of the inventory scan on users\' computers?

- A. Modify the Send Inventory Change (Deltas) Only option.
- B. Modify the System Resource Usage option.

C. Modify the Throttle Inventory Reporting option.

D. Modify the policy to run between 08:00 and 14:00.

Correct Answer: B