

100% Money Back
Guarantee

Vendor:Cisco

Exam Code:200-101

Exam Name:Interconnecting Cisco Networking
Devices Part 2 (ICND2)

Version:Demo

QUESTION 1

What are three values that must be the same within a sequence of packets for Netflow to consider them a network flow? (Choose three.)

- A. source IP address
- B. source MAC address
- C. egress interface
- D. ingress interface
- E. destination IP address
- F. IP next-hop

Correct Answer: ADE

QUESTION 2

Which of these represents an IPv6 link-local address?

- A. FE80::380e:611a:e14f:3d69
- B. FE81::280f:512b:e14f:3d69
- C. FEFE:0345:5f1b::e14d:3d69
- D. FE08::280e:611:a:f14f:3d69

Correct Answer: A

Understanding IPv6 Link Local Address Reference:

http://www.cisco.com/en/US/tech/tk872/technologies_configuration_example09186a0080ba1d07.shtml

The purpose of this document is to provide an understanding of IPv6 Link-local address in a network. A linklocal address is an IPv6 unicast address that can be automatically configured on any interface using the linklocal prefix FE80::/10 (1111 1110 10) and the interface identifier in the modified EUI-64 format. Link-local addresses are not necessarily bound to the MAC address (configured in a EUI-64 format). Link-local addresses can also be manually configured in the FE80::/10 format using the ipv6 address link-local command.

QUESTION 3

Enhanced Interior Gateway Routing Protocol (EIGRP) is a Cisco proprietary routing protocol, so it is vendor-specific. By default, EIGRP internal routes have an administrative distance value of 90. OSPF uses cost as its metric. By default, the cost of an interface is calculated based on bandwidth with the formula $\text{cost} = \frac{100000000}{\text{bandwidth (in bps)}}$. OSPF elects a DR on each broadcast and nonbroadcast multiaccess networks (like Ethernet and Frame Relay environments, respectively). It doesn't elect a DR on

point-to-point link (like a serial WAN).

Select and Place:

Drag the description on the left to the routing protocol on the right. (Not all options are used.)

is vendor-specific	www.Pass4Lead.com	EIGRP
uses cost as its metric		
uses hop count as its metric		
uses the Bellman-Ford algorithm		
elects a DR on each multiaccess network		
has a default administrative distance of 90		
		OSPF

Correct Answer:

Drag the description on the left to the routing protocol on the right. (Not all options are used.)

	www.Pass4Lead.com	EIGRP
		is vendor-specific
		has a default administrative distance of 90
uses hop count as its metric		
uses the Bellman-Ford algorithm		
		OSPF
		uses cost as its metric
		elects a DR on each multiaccess network

QUESTION 4

What is one benefit of PVST+?

- A. PVST+ supports Layer 3 load balancing without loops.
- B. PVST+ reduces the CPU cycles for all the switches in the network.
- C. PVST+ allows the root switch location to be optimized per VLAN.
- D. PVST+ automatically selects the root bridge location, to provide optimized bandwidth usage.

Correct Answer: C

Per VLAN Spanning Tree (PVST) Introduction

http://www.cisco.com/en/US/tech/tk389/tk621/tk846/tsd_technology_support_sub-protocol_home.html

Per VLAN Spanning Tree (PVST) maintains a spanning tree instance for each VLAN configured in the network. This

means a switch can be the root bridge of a VLAN while another switch can be the root bridge of other VLANs in a common topology. For example, Switch 1 can be the root bridge for Voice data while Switch 2 can be the root bridge for Video data. If designed correctly, it can optimize the network traffic.

<http://www.ciscopress.com/articles/article.asp?p=102157andseqNum=4>

QUESTION 5

What are three reasons to collect Netflow data on a company network? (Choose three.)

- A. To identify applications causing congestion
- B. To authorize user network access
- C. To report and alert link up / down instances
- D. To diagnose slow network performance, bandwidth hogs, and bandwidth utilization
- E. To detect suboptimal routing in the network
- F. To confirm the appropriate amount of bandwidth that has been allocated to each Class of Service

Correct Answer: ADF

QUESTION 6

Which statement is true, as relates to classful or classless routing?

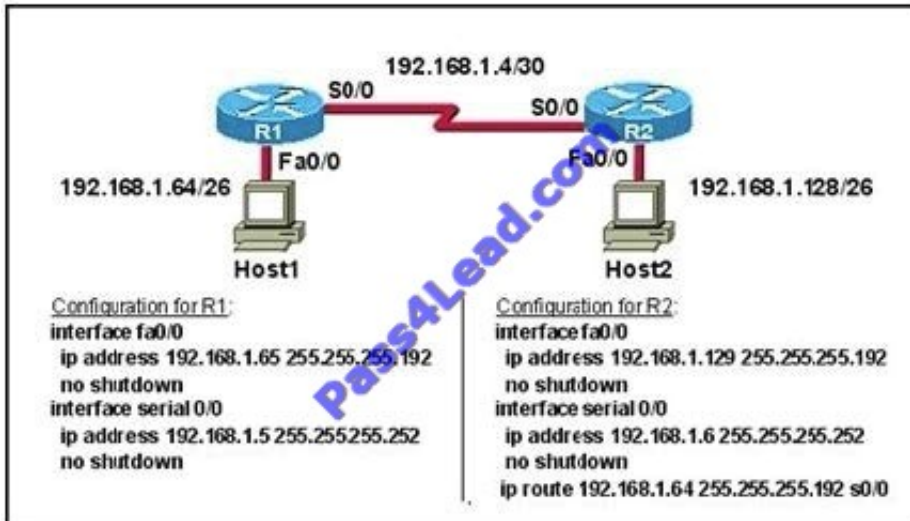
- A. Classful routing protocols send the subnet mask in routing updates.
- B. RIPv1 and OSPF are classless routing protocols.
- C. Automatic summarization at classful boundaries can cause problems on discontinuous subnets.
- D. EIGRP and OSPF are classful routing protocols and summarize routes by default.

Correct Answer: C

<http://www.ciscopress.com/articles/article.asp?p=174107andseqNum=3> RIPv1, RIPv2, IGRP, and EIGRP all auto-summarize classful boundaries by default (OSPF does not). To make discontinuous networks work, meaning you don't want classful boundaries to summarize, you need to turn off auto-summary.

QUESTION 7

Refer to the exhibit.



A technician pastes the configurations in the exhibit into the two new routers shown. Otherwise, the routers are configured with their default configurations. A ping from Host1 to Host2 fails, but the technician is able to ping the S0/0 interface of

R2 from Host1. The configurations of the hosts have been verified as correct.

What is the cause of the problem?

- A. The serial cable on R1 needs to be replaced.
- B. The interfaces on R2 are not configured properly.
- C. R1 has no route to the 192.168.1.128 network.
- D. The IP addressing scheme has overlapping subnetworks.
- E. The ip subnet-zero command must be configured on both routers.

Correct Answer: C

Whenever a node needs to send data to another node on a network, it must first know where to send it. If the node cannot directly connect to the destination node, it has to send it via other nodes along a proper route to the destination node. A remote network is a network that can only be reached by sending the packet to another router. Remote networks are added to the routing table using either a dynamic routing protocol or by configuring static routes. Static routes are routes to networks that a network administrator manually configured. So R should have static route for the 192.168.1.128.

QUESTION 8

Refer to the exhibit.

```

Switch# show spanning-tree vlan 30
VLAN0030
Spanning tree enabled protocol rstp
Root ID Priority 24606
Address 00d0.047b.2800
This bridge is the root
Hello Time 2 sec Max Age 20 sec Forward Delay 15 sec
Bridge ID Priority 24606 (priority 24576 sys-id-ext 30)
Address 00d0.047b.2800
Hello Time 2 sec Max Age 20 sec Forward Delay 15 sec
Aging Time 300
Interface      Role  Sts  Cost  Prio.Nbr  Type
-----
Fa1/1          Desg FWD   4     128.1    p2p
Fa1/2          Desg FWD   4     128.2    p2p
Fa5/1          Desg FWD   4     128.257  p2p

```

The output that is shown is generated at a switch. Which three statements are true? (Choose three.)

- A. All ports will be in a state of discarding, learning, or forwarding.
- B. Thirty VLANs have been configured on this switch.
- C. The bridge priority is lower than the default value for spanning tree.
- D. All interfaces that are shown are on shared media.
- E. All designated ports are in a forwarding state.
- F. This switch must be the root bridge for all VLANs on this switch.

Correct Answer: ACE

From the output, we see that all ports are in Designated role (forwarding state) -> A and E are correct. The command "show spanning-tree vlan 30 only shows us information about VLAN 30. We don't know how many VLAN exists in this switch -> B is not correct.

The bridge priority of this switch is 24606 which is lower than the default value bridge priority 32768 -> C is correct.

All three interfaces on this switch have the connection type "p2p", which means Point-to-point environment not a shared media -> D is not correct.

The only thing we can specify is this switch is the root bridge for VLAN 30 but we can not guarantee it is also the root bridge for other VLANs -> F is not correct.

QUESTION 9

What Cisco IOS feature can be enabled to pinpoint an application that is causing slow network performance?

- A. SNMP

- B. Netflow
- C. WCCP
- D. IP SLA

Correct Answer: B

QUESTION 10

It has become necessary to configure an existing serial interface to accept a second Frame Relay virtual circuit. Which of the following are required to solve this? (Choose three)

- A. configure static frame relay map entries for each subinterface network.
- B. remove the ip address from the physical interface
- C. create the virtual interfaces with the interface command
- D. configure each subinterface with its own IP address
- E. disable split horizon to prevent routing loops between the subinterface networks
- F. encapsulate the physical interface with multipoint PPP

Correct Answer: BCD

How To Configure Frame Relay Subinterfaces <http://www.orbit-computer-solutions.com/How-To-Configure-Frame-Relay-Subinterfaces.php>

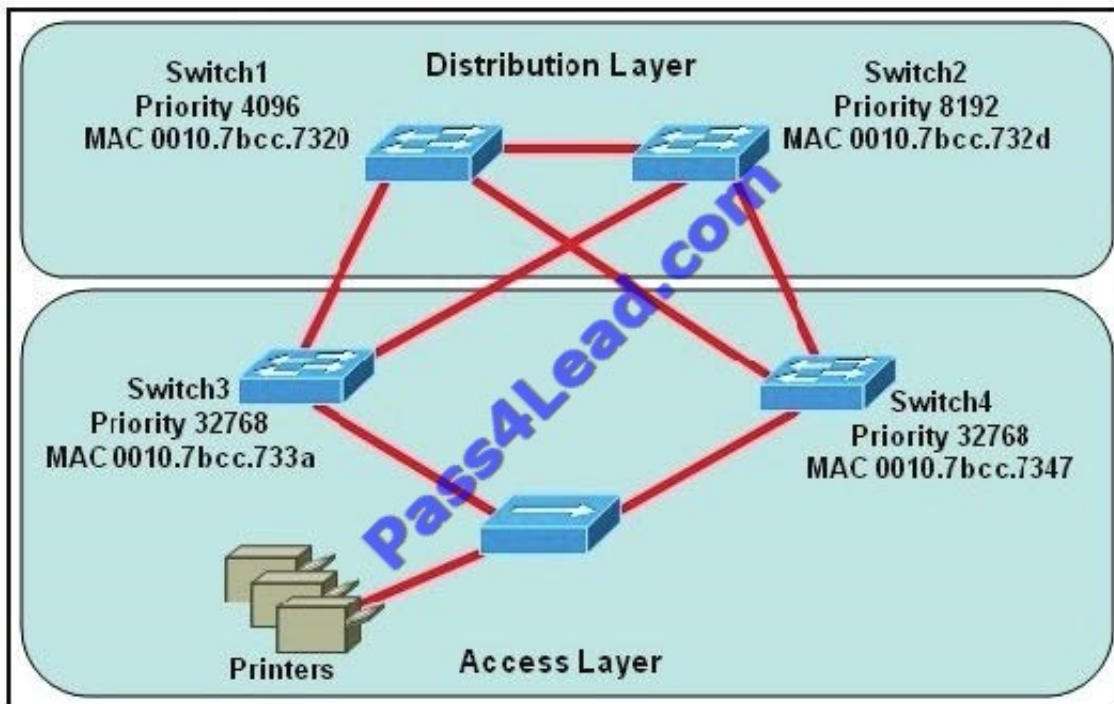
Step to configure Frame Relay subinterfaces on a physical interface:

1.
Remove any network layer address (IP) assigned to the physical interface. If the physical interface has an address, frames are not received by the local subinterfaces.
2.
Configure Frame Relay encapsulation on the physical interface using the encapsulation frame- relay command.
3.
For each of the defined PVCs, create a logical subinterface. Specify the port number, followed by a period (.) and the subinterface number. To make troubleshooting easier, it is suggested that the subinterface number matches the DLCI number.
4.
Configure an IP address for the interface and set the bandwidth.
- 5.

Configure the local DLCI on the subinterface using the frame-relay interface-dlci command. Configuration Example:
R1>enable R1#configure terminal R1(config)#interface serial 0/0/0 R1(config-if)#no ip address R1(config-if)#encapsulation frame-relay R1(config-if)#no shutdown R1(config-if)#exit R1(config-subif)#interface serial 0/0/0.102 point-to-point R1(config-subif)#ip address 192.168.1.245 255.255.255.252 R1(config-subif)#frame-relay interface-dlci R1(config-subif)#end R1#copy running-config startup-config

QUESTION 11

Refer to the exhibit



Which switch provides the spanning-tree designated port role for the network segment that services the printers?

- A. Switch1
- B. Switch2
- C. Switch3
- D. Switch4

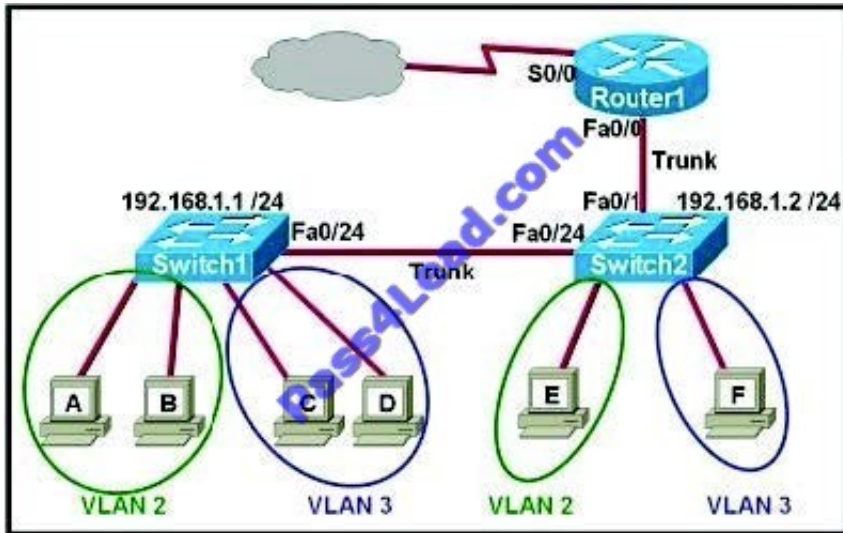
Correct Answer: C

First, the question asks what switch services the printers, so it can be Switch 3 or Switch 4 which is connected directly to the Printers. Designated port is a port that is in the forwarding state. All ports of the root bridge are designated ports. Switch 3 and Switch 4 has same priority so it will see on lowest MAC address and here switch 3 has lowest MAC address. So switch 3 segment will play a Designated port role. By comparing the MAC address of Switch 3 and Switch 4 we found that the MAC of Switch 3 is smaller. Therefore the interface connected to the Printers of Switch 3 will become

designated interface and the interface of Switch 4 will be blocked.

QUESTION 12

Refer to the exhibit.



Which two statements are true about interVLAN routing in the topology that is shown in the exhibit? (Choose two.)

- A. Host E and host F use the same IP gateway address.
- B. Router1 and Switch2 should be connected via a crossover cable.
- C. Router1 will not play a role in communications between host A and host D.
- D. The FastEthernet 0/0 interface on Router1 must be configured with subinterfaces.
- E. Router1 needs more LAN interfaces to accommodate the VLANs that are shown in the exhibit.
- F. The FastEthernet 0/0 interface on Router1 and the FastEthernet 0/1 interface on Switch2 trunk ports must be configured using the same encapsulation type.

Correct Answer: DF

http://www.cisco.com/en/US/tech/tk389/tk815/technologies_configuration_example09186a00800949fd.shtml

To Read the [Whole Q&As](#), please purchase the [Complete Version](#) from [Our website](#).

Try our product !

100% Guaranteed Success

100% Money Back Guarantee

365 Days Free Update

Instant Download After Purchase

24x7 Customer Support

Average **99.9%** Success Rate

More than **800,000** Satisfied Customers Worldwide

Multi-Platform capabilities - **Windows, Mac, Android, iPhone, iPod, iPad, Kindle**

Need Help

Please provide as much detail as possible so we can best assist you.

To update a previously submitted ticket:



 <p>One Year Free Update Free update is available within One Year after your purchase. After One Year, you will get 50% discounts for updating. And we are proud to boast a 24/7 efficient Customer Support system via Email.</p>	 <p>Money Back Guarantee To ensure that you are spending on quality products, we provide 100% money back guarantee for 30 days from the date of purchase.</p>	 <p>Security & Privacy We respect customer privacy. We use McAfee's security service to provide you with utmost security for your personal information & peace of mind.</p>
---	---	--

Any charges made through this site will appear as Global Simulators Limited.

All trademarks are the property of their respective owners.