

**100%** Money Back  
**Guarantee**

**Vendor:**Oracle

**Exam Code:**1Z0-567

**Exam Name:**Primavera P6 Enterprise Project Portfolio  
Management 8 Essentials

**Version:**Demo

## QUESTION 1

You are meeting with a customer and demonstrating the Resource Assignments GANTT view. What data will you be highlighting?

- A. Tabular-formatted data showing codes and attributes
- B. Timescaled resource assignment data
- C. Timescaled project and resource data
- D. Timescaled cost and resource data

Correct Answer: B

Explanation:

Note: See 5a below.

Customizing the Resources Assignments Gantt Chart Bars Customize the settings for the Gantt chart view on the Resources Assignments page. You can set

features for up to three bars per assignment.

To customize the resource assignments Gantt chart bars:

Note: Set at least one bar to Current Bar.

\*

Current Bar - Shows a bar that spans the early start date/actual start date to the early finish date/actual finish date for each assignment. For a Current bar, you

can select an additional option for showing the progress of activities.

\*

Late Bar - Shows the late start date to the late finish date of an assignment. A Late bar does not display if the project has not been scheduled.

\*

Plan Bar - Shows the planned start date to the planned finish date of an assignment. This bar is used for simulating the outcome of the project schedule as part

of project planning.

Etc.

References:

---

## QUESTION 2

All commands executed by toolbar icons can be accessed from three menus. Select the three menus.

- A. Action
- B. Copy
- C. Edit
- D. Paste
- E. View
- F. Remove
- G. Modify

Correct Answer: ACE

Explanation:

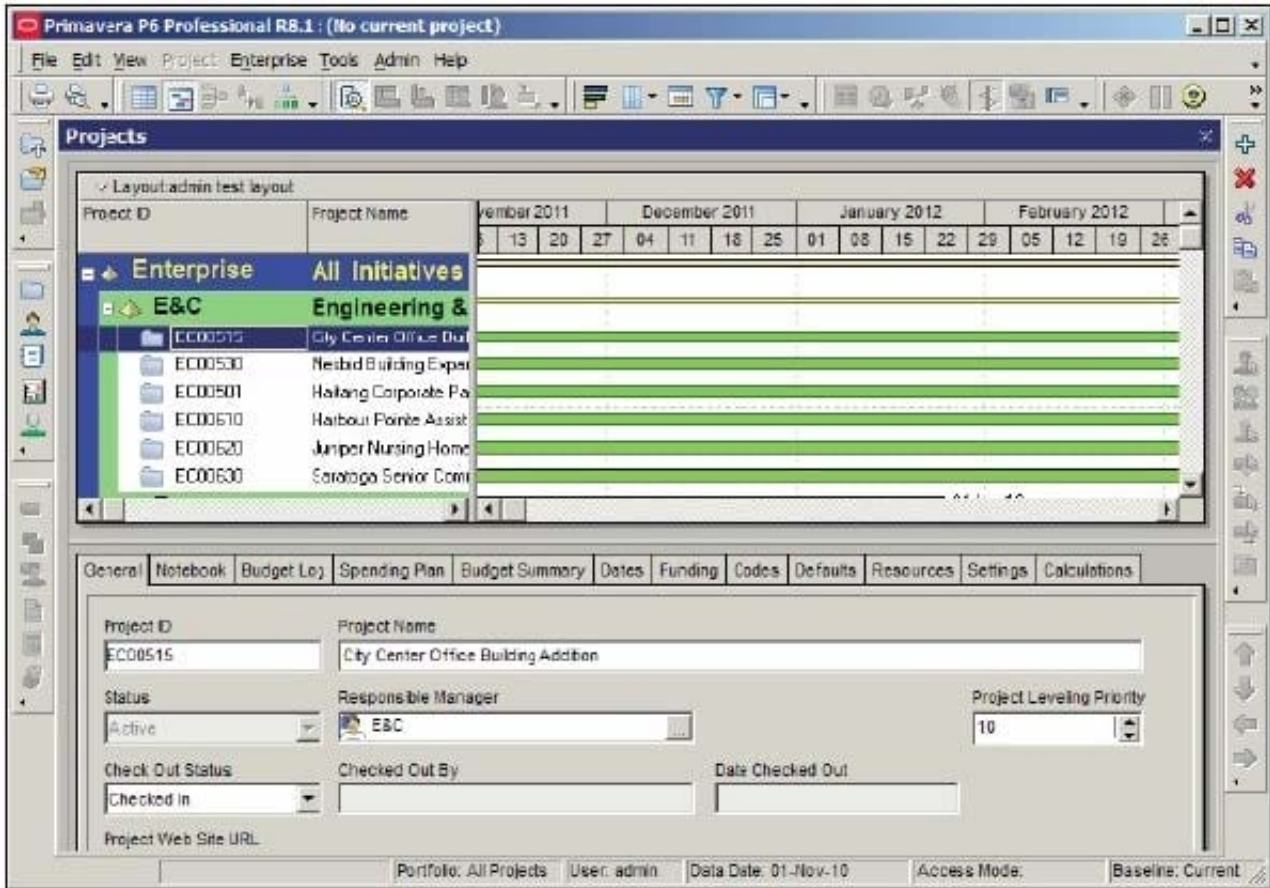
A: Note: To facilitate a streamlined, role-specific configuration of P6 Web Access, your administrator can assign you to a user interface view that corresponds to your role and work processes in your organization. The tabs, tab icons, and action menu items that you can access in each section of P6 Web Access, and the order in which they appear, depend on your user interface view settings

C: The Edit menu is a standard Windows menu that lets you do common actions such as cut, copy, and paste.

E: The View menu is quite extensive, and the items available vary as you view different modules.

Note:

When you log into P6 the first time, you should be presented with a screen similar to the following screenshot:



### QUESTION 3

Identify the true statement regarding the EPS page in P6 R8.

- A. You can copy a project on the EPS page and paste it into another EPS node.
- B. You cannot copy projects on the EPS page - this must still be done in the Client.
- C. Any user can now copy projects on the EPS page regardless of the user's Security profile.
- D. Only application administrators have the privilege to copy/paste projects.

Correct Answer: A

Explanation:

Note:

\*

Enterprise Project Structure (EPS)

The EPS is the outsider's view of your company, showing your lines of business. The EPS is laid out in a tree structure.

\*

Simply put, "enterprise" means information that is shared across all projects.

EPS / Project Name	EPS ID	Responsible Manager	Original Budget	
EPS: All Initiatives	Enterprise	Enterprise	1,175,000	EPS
EPS: Engineering & Construction	E&C	E&C		EPS
EPS: Energy Services	Energy	Energy		EPS
EPS: Manufacturing	Manufacturing	Manufacturing		EPS
EPS: Product Development	ProdDev	ProdDev		EPS
EPS: Product Program 1	ProdProg1	ProdProg1		EPS
EPS: Product Program 2	ProdProg2	ProdProg2		EPS
EPS: Corporate Programs	Corporate	Corporate		EPS
EPS: In-flight Projects	In-flight	Corporate		EPS
EPS: Proposed Opportunities	Pipeline	IT	1,000,000	EPS
EPS: Information Technology	IT	IT		EPS
EPS: Line of Business 1	LOB 1	LOB 1	10,000,000	EPS
EPS: Line of Business 2	LOB 2	LOB 2	100,000	EPS
EPS: Project Templates	Templates	Enterprise		EPS

#### QUESTION 4

You are a project manager on a fixed-bid contract. This contract has actually been positioned as a "loss leader" within your company because it is your first contract with this customer. The hope is that you can prove yourself to the customer and win additional business at higher margins down the road. The margins for this contract are very slim.

What would be the best solution to set up in P6 to give you the visibility that you need to minimize the probable financial loss?

- A. Set a Mandatory Finish constraint at each contractual milestone and track schedule performance against the constraint.
- B. Set all activities in your project plan to Physical % Complete, and use Remaining Duration to track schedule performance.
- C. Set all activities in your project plan to Units % Complete, and use Remaining units to track schedule performance
- D. Set a Must finish By date at the project level, and track schedule performance using float in the project plan.

Correct Answer: B

Explanation:

Note: Percent complete

You can also update activity status by entering the completed percentage against it. In the Activity Details screen, you can set the percentage complete for the

activity to be one of these three types:

- Duration: It simply calculates the current date versus the start date and planned duration.
  - Physical: It requires statusing both resource units (remaining duration or percent complete). This delivers a better representation of progress, but at the cost of requiring greater detail.
  - Units: It requires statusing of remaining units. The percent of delivered units compared to planned units drives progress for the activity.
- 

## QUESTION 5

Select two true statements about the Portfolio Analysis tab in Primavera P6 EPPM.

- A. Conducts a side-by-side comparison of an unlimited number of portfolios
- B. Conducts a side-by-side comparison of two projects
- C. Conducts a side-by-side comparison of two portfolios
- D. Conducts a side by-side comparison of one project displayed in different views
- E. Conducts a side by-side comparison of the same portfolio displayed in different views

Correct Answer: CE

Explanation:

Note: Creating Projects on the Portfolio Analysis Page Generally, you create projects while working on the EPS page in the Projects section of the application.

However, it is also possible to create what-if projects while analyzing portfolios. During the process of evaluating a portfolio, you will often want to capture a new

project idea. To create a project on the portfolio analysis page:

- 1) Click Portfolios.
- 2) On the Portfolios navigation bar, click Portfolio Analysis.
- 3) On the Portfolio Analysis page:

a.  
Make sure you are working with the primary portfolio (at top or left) and not the comparison set for the next steps.

b.  
In the Scenario list, select a scenario for your analysis. c. In the View list, select a portfolio view scorecard. d. In the scorecard, select a row where you want to

add a new project.

e.

Click Add Project.

4) For the first project you create, if defaults are not already set, the Add Project dialog box appears:

a.

Select a default Parent EPS element.

b.

Select a default Responsible Manager.

c.

Click Select.

5) On the Portfolio Analysis page, click Save. Tip You can change the what-if project's Project Status field value on the General detail window of the EPS page.

For example, you may later want to change a project from What If to Planned status. Note 2: A portfolio is a collection of projects. Group projects into portfolios so

you can easily view data from more than one project at a time. Reference; P6 EPPM User's Guide, Creating Projects on the Portfolio Analysis

---

## QUESTION 6

Select the true statement regarding project security profiles.

- A. Project security profiles define the weight of project codes.
- B. To receive a project security profile, a user must be defined as a resource.
- C. Project security profiles override global security profiles.
- D. To access projects, a user must be assigned a project security profile.

Correct Answer: D

Explanation:

Project profiles

Define a user's access to project-specific

information. The Project Management module does not require that each user be assigned a project profile; however, users cannot access projects unless they

are assigned a project profile or the global profile, Admin Superuser.

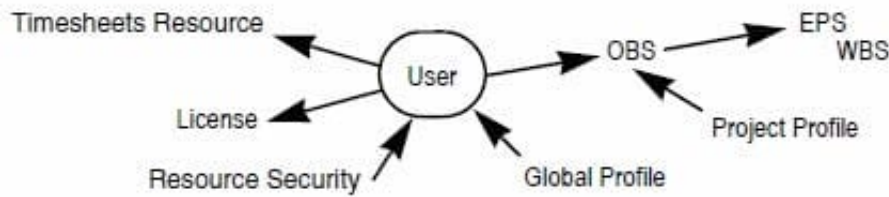
Note:

To ensure security at various levels of data, the Project Management module provides two sets of security profiles:

\* Global profiles Define a user's access to application-wide information and settings, such as the enterprise project

structure (EPS), resources, roles, and cost accounts. Each user must be assigned a global profile. (B) \*

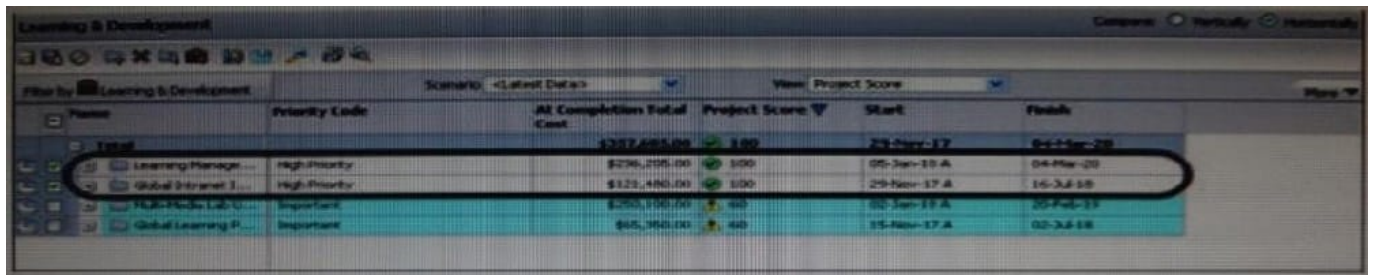
Note 1: The following diagram illustrates the relationships between a user, the OBS, EPS, and WBS.



Note 2: Users in Primavera P6 require two different profiles to control what they can do in the system; a Global Security Profile and a Project Security Profile.

### QUESTION 7

This graphic is an example of a \_\_\_\_\_.



- A. spreadsheet
- B. scorecard
- C. portfolio
- D. waterline analysis

Correct Answer: D

Explanation: Example:

Name	Original Budget	Proposed Budget	Current Budget
<b>Total</b>	<b>\$19,390,000.00</b>	<b>\$19,390,000.00</b>	<b>\$19,390,000.00</b>
<b>Engineering &amp; Cons...</b>	<b>\$19,390,000.00</b>	<b>\$19,390,000.00</b>	<b>\$19,390,000.00</b>
CITY Center Offic...	\$630,000.00	\$630,000.00	\$630,000.00
Haitano Corporal...	\$630,000.00	\$630,000.00	\$630,000.00
Harbour Pointe A...	\$4,700,000.00	\$4,700,000.00	\$4,700,000.00
Harbour Pointe A...	\$4,700,000.00	\$4,700,000.00	\$4,700,000.00
Junker Nursing ...	\$3,500,000.00	\$3,500,000.00	\$3,500,000.00
Nesoid Building E...	\$630,000.00	\$630,000.00	\$630,000.00
Saratoga Senior ...	\$4,000,000.00	\$4,000,000.00	\$4,000,000.00



Note the checkboxes to the left-hand side of each project. If you uncheck a box, then that project will be removed from the totals displayed. This will also remove that project from the accompanying portfolio view.

---

### QUESTION 8

Identify two available portfolio chart views in Primavera P6.

- A. GANTT
- B. Bubble
- C. Histogram
- D. Spreadsheet
- E. Scorecard

Correct Answer: BC

Explanation:

B: Bubble Chart is the most complex and powerful portfolio view.

C: Histograms

Note that this is not a true histogram,

which is a diagram representing a distribution of data. An example of a true histogram would be a chart showing the number of activities completed each month.

Histograms in the Portfolio Analysis view are rather a "Relative order of Magnitude" chart presented as an X-Y chart.

---

### QUESTION 9

Identify the true statement regarding currencies.

- A. Currencies are predefined at installation.
- B. Exchange rates are automatically updated monthly.
- C. P6 supports an unlimited number of currencies.
- D. US dollars is the only valid currency for financial transactions.

Correct Answer: C

Explanation:

---

### QUESTION 10

Identify the business case that would support the creation of OBS elements to align with WBS elements within individual

project plans.

- A. Legal/regulatory requirements that prohibit users from seeing data across functional areas maintaining smaller sets of project data
- B. Mitigate the risk of significantly variant project management skill levels across an organization
- C. Large projects with multiple cross-functional teams that will be responsible for updating/maintaining one set of project data
- D. Supporting data export/import process to minimize risk of degrading schedule quality

Correct Answer: C

Explanation: A work breakdown structure (WBS) is a hierarchical arrangement of the products and services produced during and by a project. The project is the highest level of the WBS while an individual activity required to create a product or service is the lowest level. Each project in the enterprise project structure (EPS) has its own WBS. When creating a project, the project manager typically develops the WBS first, assigns work products and documents to each WBS element, and then defines activities for performing the element's work. Specific earned value calculations can be specified for each WBS element, along with an organizational breakdown structure (OBS) element responsible for all work included in the WBS element.

---

#### QUESTION 11

You are a program manager reviewing portfolio performance data. You see that many issues are assigned to a "responsible manager." What does "responsible manager" mean with Primavera P6 EPPM?

- A. The person responsible for resolving the issue
- B. The person who identified the issue
- C. The element from the OBS associated with the issue
- D. the manager to which the issue has been assigned

Correct Answer: C

Explanation:

Your organization, from top-level personnel down through all levels. You can associate the responsible managers with their areas of the EPS-- either nodes or

individual projects. When you associate a responsible manager with an EPS node, any projects you add to that branch of the EPS are assigned that manager

element by default.

Note: Note: When you associate a responsible manager with an EPS Node, any projects you add to that branch of the EPS are assigned that manager element by

default. When you create a user, you have to give them Responsible Manager assignments in order for them to see projects. Your EPS and your OBS need to have a one-to-one relationship. If you give a user a Responsible Manager assignment (OBS) that is not tied to an EPS, Project or WBS level, they will not see any projects when they log into the Primavera Client application or the Web Application.

---

## QUESTION 12

You are an executive that wants to review portfolio data for a high-risk/high-priority group of projects. You go to Portfolios in Primavera P6 Web. However, the data shown is not the correct portfolio. What should you do to correct this problem?

- A. Manage the desired portfolio.
- B. Open the desired portfolio.
- C. Filter the portfolio in a dashboard.
- D. Create a user portfolio view.

Correct Answer: C

Explanation: