

100% Money Back
Guarantee

Vendor:Oracle

Exam Code:1Z0-419

Exam Name:Implementation Application Development
Framework

Version:Demo

QUESTION 1

Which two statements are true about a dvt:gauge component? (Choose two.)

- A. dvttresholdSet with dvttreshold tags can be used to define ranges of data and coloring for a gauge
- B. The style of the dial in a dial gauge is fixed
- C. A gauge component can render as a vertical status meter.
- D. Gauge data range must start from 0.

Correct Answer: AC

QUESTION 2

Which three resources can be secured by using the declarative features of ADF security? (Choose three)

- A. task flows
- B. pages that are not contained within a task flow
- C. attributes defined in entity objects
- D. specific rows of data
- E. stack traces
- F. PL/SQL procedures

Correct Answer: ABC

QUESTION 3

What should be in a managed bean, rather than a backing bean? (Choose the best answer.)

- A. code that manipulates the color of a text field on a JSF page
- B. data that is used to decide if a field is shown as mandatory or not
- C. data that is used on another page in the task flow
- D. code that opens a pop-up in the page

Correct Answer: C

QUESTION 4

Which statement is true about the role of bindings within the ADF Model layer of ADF? (Choose the best answer.)

- A. The binding is a Java API for reading and writing data directly between ADF Business Components and ADF Faces.
- B. There is a one-to-one mapping such that each data control has only one binding.
- C. There are three types of bindings: method, attribute, and table.
- D. Expression Language is used to connect a UI component to a binding.
- E. Bindings can be created only by dragging and dropping from the Data Controls window.

Correct Answer: D

QUESTION 5

How are ADF components shared among applications? (Choose the best answer.)

- A. by using a source control system to share components
- B. by selecting the Shared Library check box when adding libraries and JARs to a project
- C. by creating shared application modules and ensuring all developers use them
- D. by defining a custom JAR file and sharing it in a source control system
- E. by creating an ADF Library of components and deploying it to a shared location

Correct Answer: E

QUESTION 6

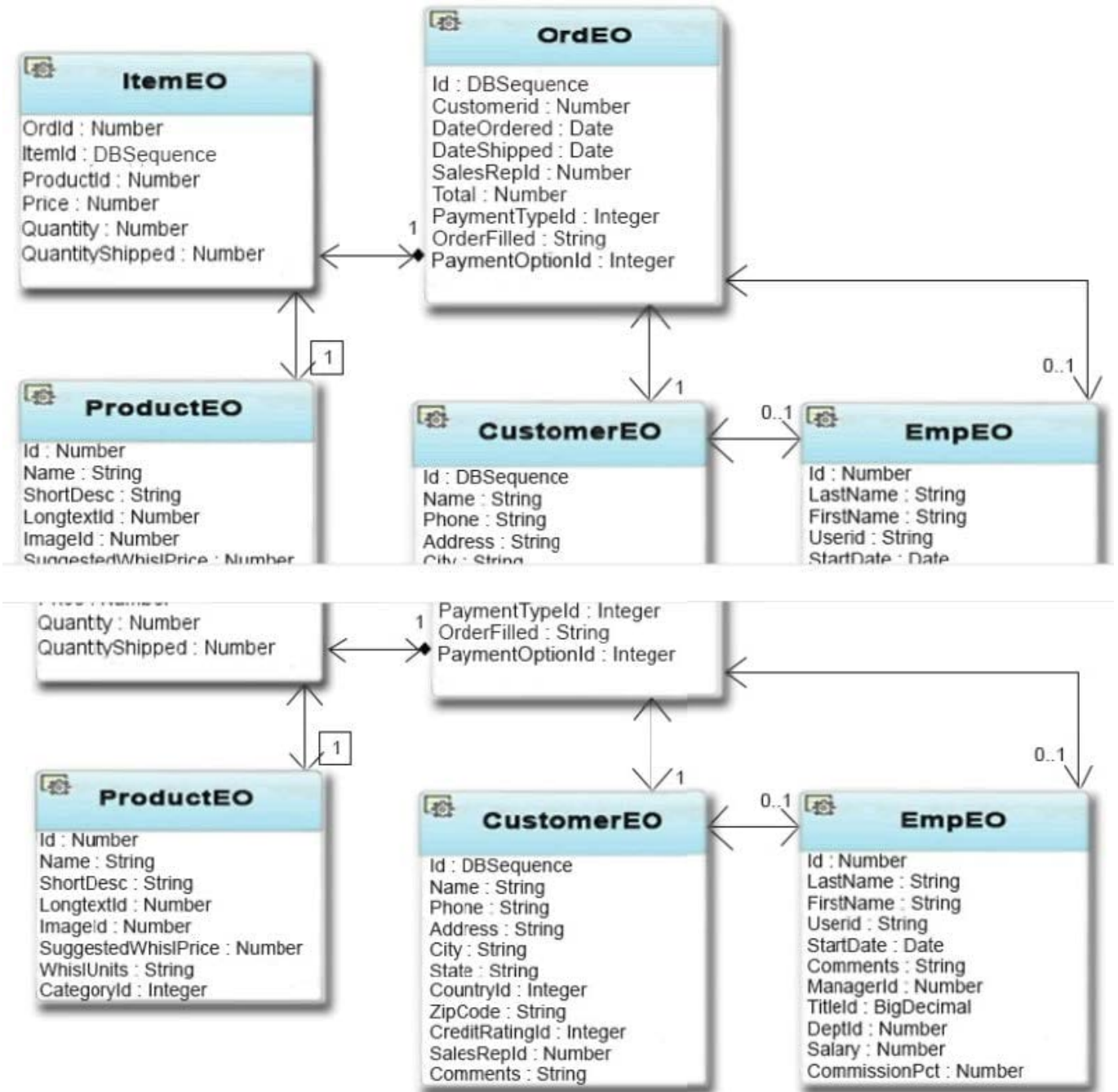
Which option is not supported by an af:table component? (Choose the best answer)

- A. turning off filtering for specific columns
- B. grouping two columns under a single title
- C. expandable area for each row
- D. nested af:table for each row
- E. automatically switching a row to edit when the user clicks a row
- F. multiple row selection

Correct Answer: C

QUESTION 7

View the Exhibit A user interface requires a view of data for a customer order to include information about the order, items in the order, and information about the customer who placed the order. The application entities and their relationships are defined as shown in the Exhibit.



Which two steps would you perform to meet this requirement? (Choose two.)

- A. Create a default view object based on OrdEO, and add ItemEO and CustomerEO as reference entities to the view object
- B. Create default view objects based on OrdEO, ItemEO, and CustomerEO, and create view links based on the defined associations
- C. Create a view object based on SQL and define the SQL to select from the Ord, Item and Customer database tables
- D. Add attributes from the ItemEO and CustomerEO entities as needed
- E. Create calculated attributes as needed from the Order, Item, and Customer database tables.

F. Set the ItemEO and CustomerEO attributes to updatable=NEVER.

Correct Answer: BD

QUESTION 8

Select three benefits that ADF Data Controls provide. (Choose three.)

- A. They abstract the UI developer from the technology used to implement business logic.
- B. They reduce the need to write managed beans.
- C. They automate Ajax updates to the UI.
- D. They enable drag-and-drop of data objects to UI component bindings.
- E. They directly connect your UI to the database tables.

Correct Answer: ABD

QUESTION 9

Consider the validation code in a Shipping entity object that is designed to ensure that the date ordered is