

100% Money Back
Guarantee

Vendor:home

Exam Code:1Y0-301

Exam Name:Deploying Citrix XenDesktop 7.6
Solutions

Version:Demo

QUESTION 1

Which step should a Citrix Engineer take to ensure that profile changes are NOT saved to a Personal vDisk when using Citrix Profile Manager?

- A. Use WMI query to set User Profile Redirection to False.
- B. Use PowerShell to set User Profile Redirection to None.
- C. Use the registry editor to set EnableUserProfileRedirection to 0.
- D. Use Citrix Profile Manager group policy to set Enable User Profile Redirection to Disabled.

Correct Answer: C Section: (none)

QUESTION 2

Which mode should a database be configured for when using a SQL mirrored solution with Provisioning Services?

- A. High-performance mode (Synchronous)
- B. High-performance mode (Asynchronous)
- C. High-safety mode with a witness (Synchronous)
- D. High-safety mode with a witness (Asynchronous)

Correct Answer: C Section: (none)

QUESTION 3

Which two steps does a Citrix Engineer need to take to enable shadowing in XenDesktop? (Choose two.)

- A. Enable Windows Remote Assistance.
- B. Run the enable-psremoting command.
- C. Install Windows Remote Management.
- D. Disable Windows User Account Control (UAC).
- E. Ensure communication on port 3389 is allowed.

Correct Answer: AE Section: (none)

QUESTION 4

Scenario: After configuring high availability for StoreFront servers on the same VLAN, users report intermittent issues accessing Receiver for Web. The NetScaler monitors show both StoreFront servers in an UP state.

What could be causing the issue?

- A. The Citrix XML monitor is misconfigured.
- B. NetScaler is using a ping monitor to check the status of the StoreFront servers.
- C. The StoreFront servers are configured for SSL, but NetScaler is using HTTP monitor.
- D. Routing issues are preventing NetScaler from reaching one of the StoreFront servers.

Correct Answer: B Section: (none)

QUESTION 5

A Citrix Engineer needs to restrict access to an application so it can only be accessed from external connections.

Where should the engineer go to configure this restriction?

- A. StoreFront: External Access
- B. Delivery Group: Access policy
- C. Citrix Studio: Citrix Security policy
- D. NetScaler Gateway: Session policy

Correct Answer: B Section: (none)

QUESTION 6

What does a Citrix Engineer need to do to encrypt all communications to and from virtual desktops?

- A. Secure XML traffic.
- B. Enable SecureICA.
- C. Implement StoreFront HTTPS.
- D. Configure Secure Ticket Authority (STA).

Correct Answer: B Section: (none)

QUESTION 7

CORRECT TEXT

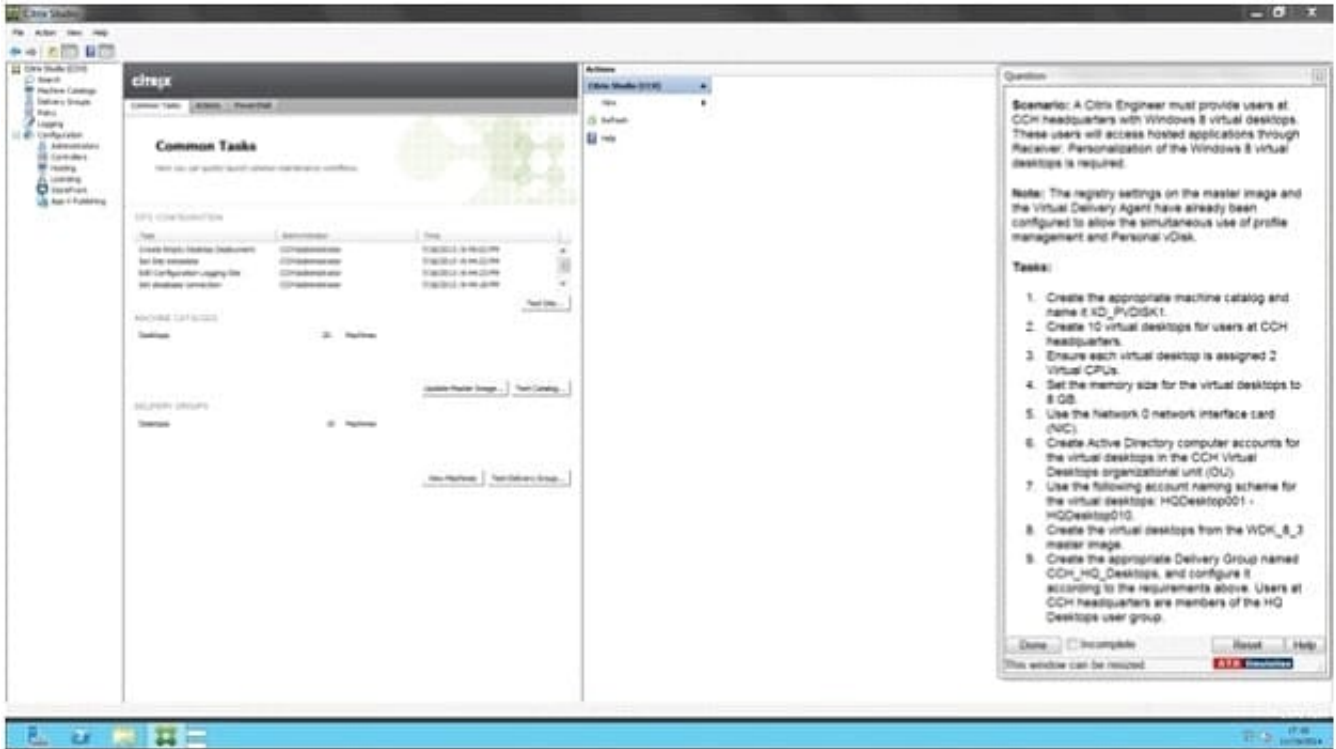
Scenario: A Citrix Engineer must provide users at CCH headquarters with Windows 8 virtual desktops.

These users will access hosted applications through Receiver. Personalization of the Windows 8 virtual desktops is required.

Note: The registry settings on the master image and the Virtual Delivery Agent have already been configured to allow the simultaneous use of profile management and Personal vDisk.

Tasks:

1.
Create the appropriate machine catalog and name it XD_PVDISK1.
2.
Create 10 virtual desktops for users at CCH headquarters.
3.
Ensure each virtual desktop is assigned 2 Virtual CPUs.
4.
Set the memory size for the virtual desktops to 8 GB.
5.
Use the Network 0 network interface card (NIC).
6.
Create Active Directory computer accounts for the virtual desktops in the CCH Virtual Desktops organizational unit(OU).
7.
Use the following account naming scheme for the virtual desktops: HQDesktop001 ?HQDesktop010.
8.
Create the virtual desktops from the WDK_8_3 master image.
9.
Create the appropriate Delivery Group named CCH_HQ_Desktops, and configure it according to the requirements above. Users at CCH headquarters are members of the HQ Desktops user group.

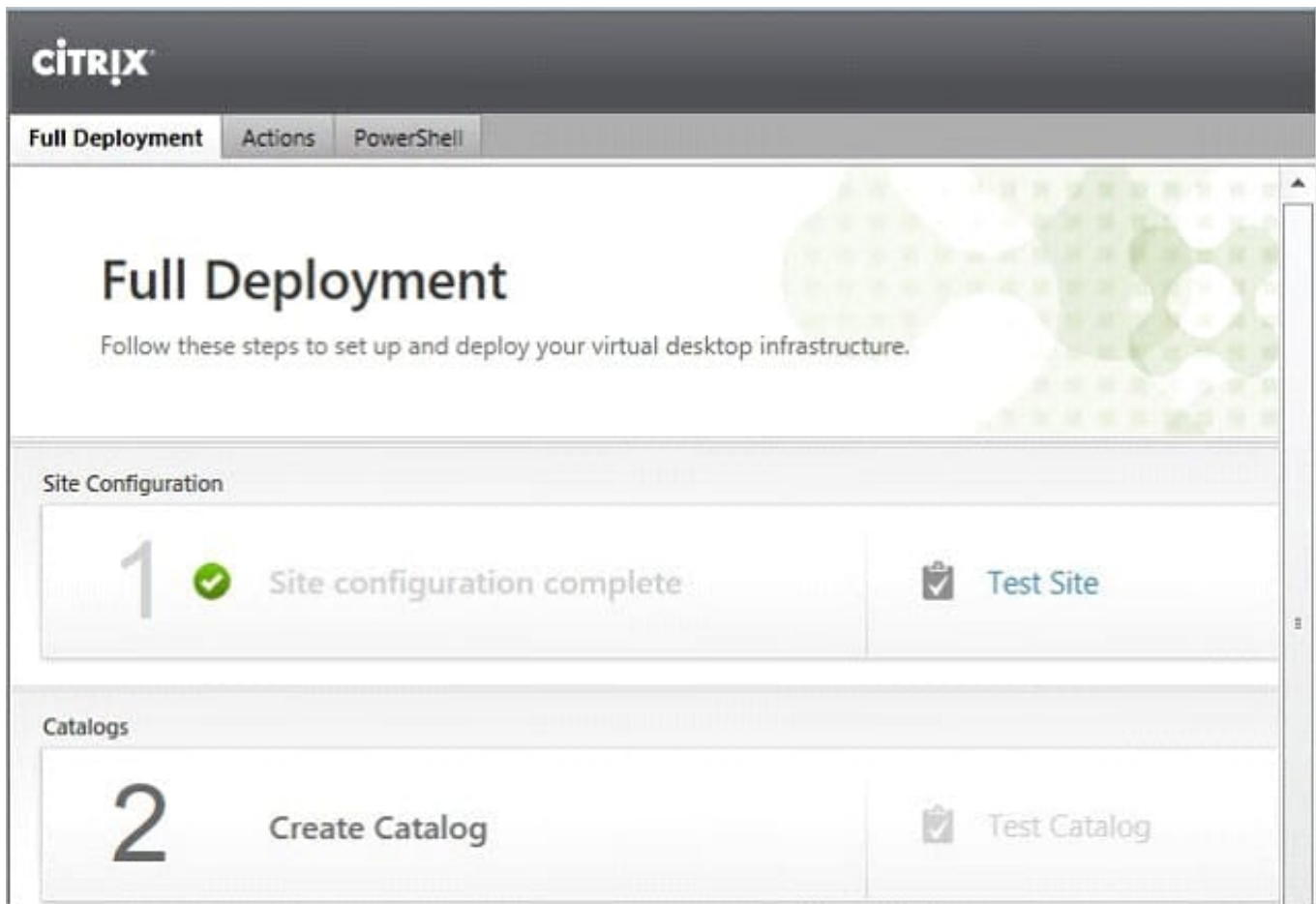


A.

Correct Answer: A Section: (none)

Answer: Find the solution with all steps below. XenDesktop 7 Machine Catalog

1. In Desktop Studio we want to create a VM catalog,



2. Choose the OS type

Operating System and Hardware

We want to help you create the correct type of Machine Catalog by asking a few questions to provide a recommendation

[Learn more](#)

Select an operating system and machine type for this Machine Catalog.

- Windows Desktop OS**
The Desktop OS Machine Catalog provides VDI desktops ideal for a variety of different users.
- Windows Server OS**
The Server OS Machine Catalog provides hosted shared desktops for a large-scale deployment of standardized machines.
- Remote PC Access**
The Remote PC Access Machine Catalog provides users with remote access to their physical office desktops, allowing them to work at any time.

3. We will be using VMs and Citrix Machine Creation Services, so the defaults are fine. 4. Use the default

Machine Management

As part of creating a Machine Catalog, the way you plan to provision machines influences the recommended Machine Catalog type.

[Learn more](#)

This infrastructure will be built using:

- Virtual machines
- Physical hardware

Desktop images are managed using:

- Machine Creation Services (MCS)
- Provisioning Services (PVS)
- Another service or technology
I will manage my desktop images with something other than Citrix technology. I have existing Master Images already prepared.

Desktop Experience

Consider the tasks your users perform and then decide which desktop experience would be best.

Which desktop experience do you want users to have?

- I want users to connect to a new (random) desktop each time they log on.
- I want users to connect to the same (static) desktop each time they log on.

Do you want to save any changes that the user makes to the desktop?

- Yes, save changes on a separate Personal vDisk.
- Yes, create a dedicated virtual machine and save changes on the local disk.
- No, discard all changes and clear virtual desktops when the user logs off.
If configured, folder redirection will not be affected.

5.

Choose the master image

6.

A great feature of XenDesktop is the ability to customize the catalog hardware at provisioning time, so you can offer different tiers of VMs from the exact same master image. No need to build up templates with the same OS and software stack, just to customize the vCPUs and memory specs.

7.

OU ?

C:\Users\Chaudhry\Desktop\1.jpg

8.

On the summary screen you need to give the catalog a name and a description.

9.

After you kick off the provisioning process you get a nice status. MCS first makes a copy of your master VM, then does its magic to create copies

10.

When the provisioning is completed you now have one machine catalog entry

11.

If you double click on the machine catalog it will bring up a search window with the individual VMs listed. You can now power them on and wait for them to show a "registered" status. If you click on an individual VM it will pull up even more details. If a user had an active session to the VM then you get a plethora more data.

WDK_8_3 master image.

Master Image

Select a Host and corresponding Virtual Machine or snapshot from the list to create a Master Image.

Select a Resource:

VDI

Select a snapshot (or a Virtual Machine):



The Master Image is built using Windows XP or Windows Vista

You should also select this option if the snapshot or Master Image is running Windows 7 with VDA 5.6

Virtual Machines

Number of virtual machines: - +

Configure your machines:

Name:	D001-Win702	
Virtual CPUs:	1	<input type="text" value="1"/> - +
Memory (MB):	2048	<input type="text" value="2048"/> - +
Hard disk (GB):	26	26

Annotations:

- Make this 10 (points to Number of virtual machines)
- Make this 2 (points to Virtual CPUs)
- Make this 8192 MB to allot 8 GB Memory (points to Memory (MB))

CCH Virtual Desktops

Machine Names – HQDesktop001 - HQDesktop010

Active Directory Computer Accounts

Each machine in a Machine Catalog needs a corresponding Active Directory computer account.

[Learn more](#)

Select an Active Directory account option:

- Create new Active Directory accounts
- Use existing Active Directory accounts

Active Directory location for computer accounts:

Domain:

- Computers
 - Member Servers
 - VDI**
 - Managed Service Accounts

Selected location:

Account naming scheme:

VDI-NS-W7-01

Summary

Machine type:	Windows Desktop OS
Machine management:	Virtual
Provisioning method:	Machine creation services (MCS)
Desktop experience:	Users connect to a new desktop each time they log on
Resources:	VDI
Master Image name:	D001-Win702 <small>A snapshot of the Master Image VM will be created</small>
Number of VMs to create:	2
Virtual CPUs:	1

Change this per the Simulation to XD_PVDISK1

Machine Catalog name:

Windows 7 x64 - 1 vCPU 2GB

Machine Catalog description for administrators: (Optional)

General purpose Windows 7 x64 VMs

Note: To complete the deployment, assign this machine catalog to a Delivery Group by selecting Delivery Groups and then Create or Edit a Delivery Group.

Studio

Creating Catalog Windows 7 x64 - vCPU 2GB...



Copying the master image.

Hide progress

CITRIX

Machine Catalog	Machine type	No. of machines	Allocated machines
Windows 7 x64 - vCPU 2GB Allocation Type: Random	Windows Desktop OS (Virtual) User data: Discard	2	0

Provisioning method: Machine creation services

Details - Windows 7 x64 - vCPU 2GB

Details Machines Administrators

Machine Catalog	Machine
Name: Windows 7 x64 - vCPU 2GB	Disk Image: Citrix_XD_Windows 7 x64 - vCPU 2GB
Machine Type: Windows Desktop OS (Virtual)	Virtual CPUs: 1
Provisioning Method: Machine creation services	Memory: 2048 MB
Allocation Type: Random	Hard disk: 26 GB
Resources: VDI	VDA version: 7.0.0.3018
Scopes: All	Operating System: Windows 7 Service Pack 1

CITRIX <Unsaved> Saved searches

Search results for '(Machine Catalog Is "Windows 7 x64 - vCPU 2GB")'

Desktop OS Machines (2)	Server OS Machines (0)	Sessions (0)					
Name	Machine Catalog	Delivery Gro...	User	Maintenanc...	Persist User...	Power State	Registration...
VDI-NS-W7-01.contoso.net	Windows 7 x6...	-	-	Off	Discard	On	Registered
VDI-NS-W7-02.contoso.net	Windows 7 x6...	-	-	Off	Discard	On	Registered

Details - VDI-NS-W7-01.contoso.net

Details Administrators

Machine	Session
Machine: VDI-NS-W7-01.contoso.net	Current User: -
Power State: On	Protocol: -
Registration: Registered	Session type: Desktop
Delivery Group: -	Time in State: -
Machine Catalog: Windows 7 x64 - vCPU 2GB	Client Name: -
Connection: vSphere51	Client Address: -
IP Address: -	Launched Via IP: -
Agent Version: 7.0.0.3018	Connected Via: -
Profile Definition: -	
StoreFronts: -	

As you can see, creating a machine catalog from a master template is quick and easy. Within Desktop Studio you can view a tremendous amount of detail about the catalog and individual VMs.

QUESTION 8

Scenario: Users at a healthcare organization experience delays when accessing a critical application because they have to log on to StoreFront first and then the application.

A Citrix Engineer needs to configure access so that users are automatically presented with the logon prompt for the

application so that they are NOT required to log on to the StoreFront site.

Which two steps should the engineer take to configure access? (Choose two.)

- A. Configure Legacy Support for the store.
- B. Create a store for unauthenticated users.
- C. Configure the application for anonymous user.
- D. Configure anonymous access for the Default Web Site in IIS.
- E. Set UseLocalUserandPassword=on in default.ica file in the StoreFront site.

Correct Answer: BC Section: (none)

QUESTION 9

Scenario: Users of a corporate StoreFront deployment subscribe to their commonly used applications. A Citrix Engineer creates a second StoreFront deployment group; however when users connect to this deployment their subscribed application preferences are NOT retained.

How could the engineer ensure that the subscriptions are visible in the second deployment?

- A. Configure subscription synchronization using PowerShell.
- B. Edit the web.config file and include the other StoreFront deployment.
- C. Ensure that the second StoreFront server group is in the trusted site zone.
- D. Use a script to copy the c:\inetpub folders between all the StoreFront servers.

Correct Answer: A Section: (none)

QUESTION 10

Which setting can be enabled to improve existing users\' logon experience when using Citrix Profile Management?

- A. Enable template profile
- B. Enable active write back
- C. Enable Profile Streaming
- D. Enable delay before deleting cached profiles

Correct Answer: C Section: (none)

QUESTION 11

CORRECT TEXT

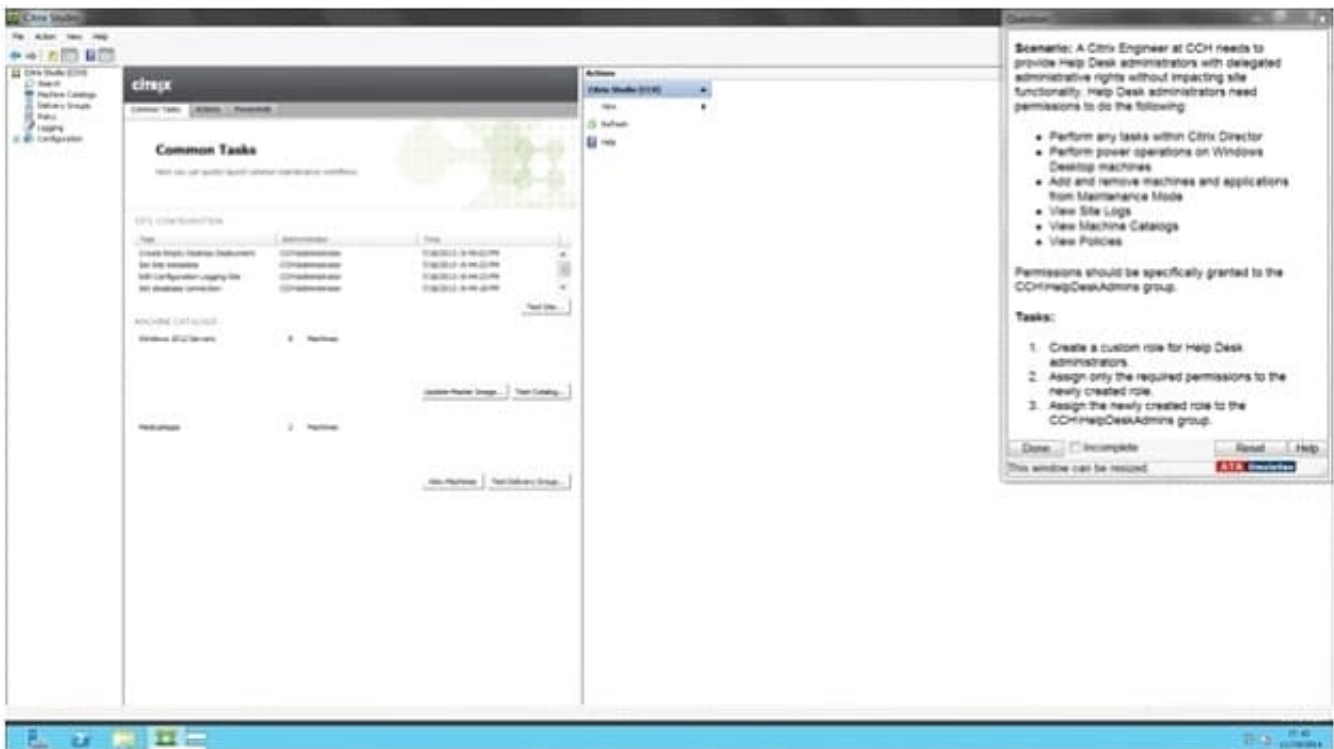
Scenario: A Citrix Engineer at CCH needs to provide Help Desk administrators with delegated administrative rights without impacting site functionality.

Help Desk administrators need permissions to do the following:

Perform any tasks within Citrix Director Perform power operations on Windows Desktop machines Add and remove machines and applications from Maintenance Mode View Site Logs View Machine Catalogs View Policies

Permissions should be specifically granted to the CCH\HelpDeskAdmins group. Tasks:

1.
Create a custom role for Help Desk administrators.
2.
Assign only the required permissions to the newly created role.
3.
Assign the newly created role to the CCH\HelpDeskAdmins group.



A.

Correct Answer: A Section: (none)

Answer: Find the solution with all steps below.

To create a custom role

In Studio, click Configuration > Administrators in the left pane, then click the Roles tab in the middle pane.

A list of existing roles appears.

In the Actions pane, click Create new Role.

Type a name and description for the role.

HelpDeskAdmins

For each object type that you want this role to have permissions for, select the object type, then select the permissions.

- **Perform any tasks within Citrix Director**
- **Perform power operations on Windows Desktop machines**
- **Add and remove machines and applications from Maintenance Mode**
- **View Site Logs**
- **View Machine Catalogs**
- **View Policies**

Click Save.

To create a scope

In Studio, click Configuration > Administrators in the left pane, then click the Scopes tab in the middle pane. A list of existing scopes appears.

In the Actions pane, click Create new Scope.

Type a name (for example, \\Sales\\) and a description (for example, \\Delivery Groups used by Sales\\) for the scope.

HelpDeskAdmins

Select object types or specific objects:

Click Save.

QUESTION 12

When deploying Provisioning Services without PXE services, which two DHCP scope options must a Citrix Engineer configure? (Choose two.)

- A. 67: Bootfile Name
- B. 44: Name Servers
- C. 61: Client Identifier
- D. 13: Host Name String

E. 66: Boot Server Host Name

Correct Answer: CD Section: (none)