

100% Money Back
Guarantee

Vendor:Citrix

Exam Code:1Y0-201

Exam Name:Managing Citrix XenDesktop 7.6
Solutions exam

Version:Demo

QUESTION 1

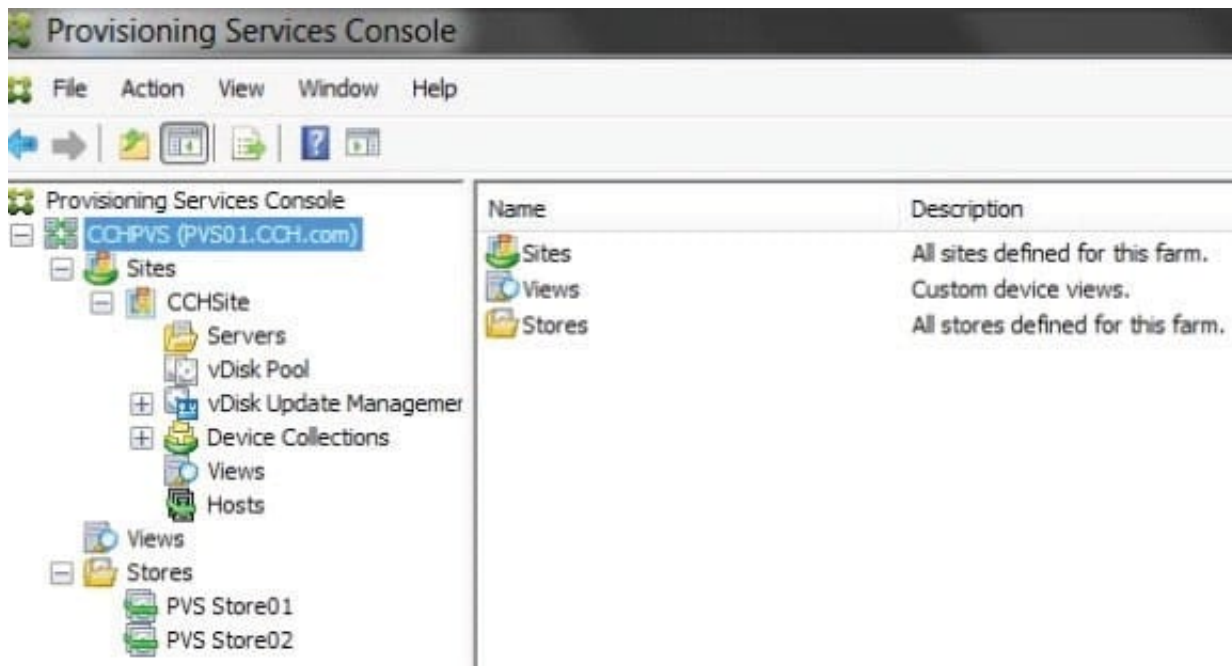
SIMULATION Scenario: Members of the HR user group at CCH need access to desktops running Windows 8. The desktops provided to HR users must be in a separate device collection named HR. As part of a pilot, a Citrix Administrator must use the Provisioning Services Console to create the device collection and initially four target devices with plans to add 20 more. The target devices named Win801T Win802. Win803 and Win804 should be assigned the CCH_Win8 vDisk and those devices should be assigned to the HR OU. XenDesktop is NOT being used for the HR team at the moment. The hypervisor information for the environment is: XenServer IP Address: 192.168.10.5 Username: root Password: Password 1 Tasks:

1.

Create a device collection named HR.

2.

Create four target devices named Win801, Win802. Win803 and Win804, and add the target devices to the HR device collection.



3. Ensure the target devices are configured to meet the requirements outlined in the scenario.

Correct Answer:

1) In Provisioning Services Console, right click on "Device" and click on Create Device Collection.

2) In the "General" type in the name "HR" and click on OK.

3) Right click on "CCHSite" node and select Streamed Virtual Machine Setup.

4) From the "Hypervisor connection" dialog window type in the Hypervisor IP address, username and password provided then click on Next.

5) From the "Virtual machine template" dialog window select the correct virtual machine template then click on Next.

- 6) From the "vDisk" dialog window select CCH_Win8 then click on Next.
 - 7) From the "Collection" dialog window select HR from the drop-down window then click on Next.
 - 8) From the "Virtual Machines" dialog window, increase the "Number of virtual machines to create" to 4 then click on Next.
 - 9) From the "Active Directory" dialog window verify "Create new accounts" is selected then click on Next.
 - 10) From the "Active Directory accounts and location" dialog windows select the HR OU; in the "Account naming scheme" field type in the "Basename#" of Win8##, select 0-9 from the drop down to the right, then click on Next.
 - 11) From the "Summary" dialog windows click on Finish.
 - 12) When the devices are finished creating click on Done.
 - 13) You can verify the new devices were created correctly in the HR Device Collection you created initially.
-

QUESTION 2

Which component CANNOT be co-located with Delivery Controller on the same server?

- A. SQL Server
- B. License Server
- C. StoreFront Server
- D. Domain Controller

Correct Answer: D

QUESTION 3

Scenario: A Citrix Administrator needs to add a new application to an existing XenDesktop Delivery Group. The application must only be available to the Human Resources (HR) user group. How could the administrator meet the requirements of the scenario?

- A. By creating a new Group Policy Object and setting security to the HR user group
- B. By editing the application in Citrix Studio and limiting the visibility to the HR user group
- C. By creating a new Citrix HDX Policy in Citrix Studio and filtering the policy to allow access to the HR user group only
- D. By creating a new application folder in Citrix Studio for the HR user group and moving the application to the new folder

Correct Answer: B

QUESTION 4

Scenario: A high number of Desktop OS machines are displaying as '\\Unregistered\\' in Citrix Studio. However, Desktop OS machines that are registered are functioning as expected. What is the likely cause of this issue?

- A. The Delivery Controller is unable to register with DNS.
- B. The Delivery Controller is NOT configured to trust XML requests.
- C. A Digital certificate is NOT installed on the Desktop OS machines.
- D. The affected Desktop OS machines are unable to register with DNS.

Correct Answer: D

QUESTION 5

Scenario: A Citrix Administrator discovers that a user is unable to connect to a Desktop OS machine. While reviewing Citrix Director, the administrator identifies that the Desktop OS machine is marked as '\\Unregistered\\'. Which two tools could the administrator use to troubleshoot this issue? (Choose two.)

- A. rsop.msc
- B. telnet.exe
- C. netsh.exe
- D. nbtstat.exe
- E. netstat.exe

Correct Answer: BE

QUESTION 6

Scenario: A user receives the following error when launching a Desktop OS machine through NetScaler Gateway:

\\Error could not connect to Application.\\'

What should a Citrix Administrator temporarily disable to analyze this error?

- A. Session Reliability
- B. Authorization policy
- C. Authentication policy
- D. Secure Ticket Authority

Correct Answer: A

QUESTION 7

Scenario: A Citrix Administrator at a medical facility needs to set up kiosks for non-corporate users to launch an application that utilizes internal authentication. The administrator needs to configure the site store.OrgA.com to allow this. How should the administrator configure the store to accomplish this requirement?

- A. Configure a new store as internal only with remote access.
- B. Add a VPN in Remote Access for store.OrgA.com to allow access.
- C. Configure the existing store as internal only with Remote Access set to None.
- D. Create an anonymous store using the Delivery Controllers belonging to OrgA.

Correct Answer: D

QUESTION 8

A user is unable to log on to the StoreFront store through Citrix Receiver. Where should a Citrix Administrator go to enable logging to troubleshoot this issue?

- A. Citrix Studio
- B. Citrix Director
- C. StoreFront Management Console
- D. Registry Editor on the StoreFront server

Correct Answer: D

QUESTION 9

Scenario: A Desktop OS machine is unresponsive. The user connected to the machine was in the process of creating a very large presentation using Microsoft PowerPoint. The presentation had NOT been saved prior to the machine becoming unresponsive.

What should a Citrix Administrator do to resolve this issue while preventing data loss?

- A. Migrate the Desktop OS machine to a different host.
- B. Restart the Desktop OS machine from Citrix Studio.
- C. Move the target device to another Provisioning Services server.
- D. Use Citrix Director to locate and terminate any rogue processes.

Correct Answer: C

QUESTION 10

Scenario: Human Resources has published training videos that all employees must watch. Employees are encountering

buffering delays and poor video quality when trying to watch the videos. Which tool could a Citrix Administrator use to identify the cause of this issue?

- A. Citrix Studio
- B. HDX Monitor
- C. CDF Control
- D. Task Manager

Correct Answer: B

QUESTION 11

Scenario: Users in an environment access hosted applications from thin clients connected to overhead projectors. Some of these users have complained about delays and interruptions in the video playing when viewing videos that require

Adobe Flash player.

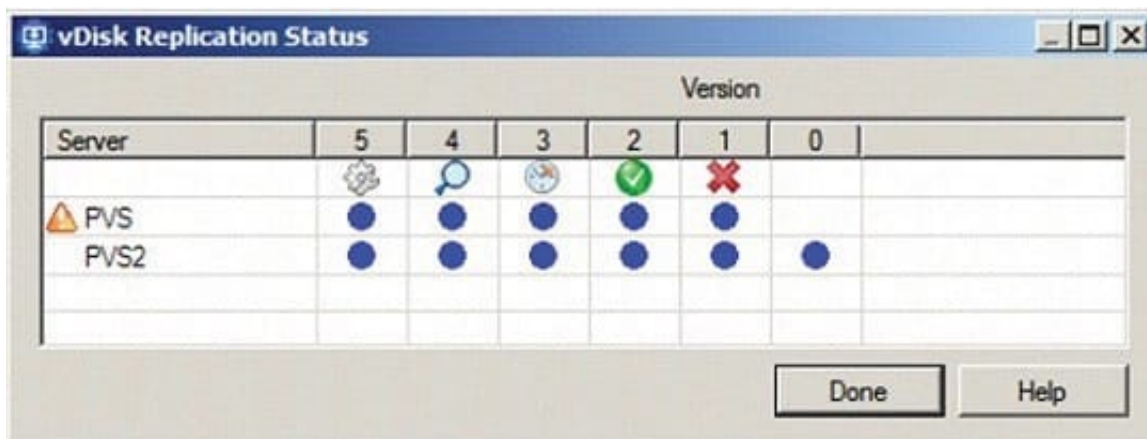
Where could a Citrix Administrator gather information to resolve this issue?

- A. Logging node in Citrix Studio
- B. Session Detail in Citrix Director
- C. Activity Manager in Citrix Director
- D. Event logs on the Delivery Controller

Correct Answer: B

QUESTION 12

Scenario: A Citrix Administrator needs to replicate a vDisk between two production Provisioning Services servers named PVS and PVS2. The Replication Status dialog box shows an orange warning signal with a message. Click on the Exhibit button to view the dialog box.



What could be the cause of this issue?

- A. The SOAP service is NOT running on the PVS server.
- B. The server time is NOT configured correctly on the PVS and PVS2 servers.
- C. The Provisioning Services server does NOT have access to one of the vDisk locations.
- D. The network card configurations on the PVS server do NOT match the configurations on the PVS2 server.

Correct Answer: C