

**100%** Money Back  
**Guarantee**

**Vendor:** Novell

**Exam Code:** 050-719

**Exam Name:** Novell Certified Administrator - Enterprise Services

**Version:** Demo

---

**QUESTION NO: 1**

You experienced a sudden power outage and your UPS unit failed. As a result, your Linux system went down without shutting down cleanly. Now your system won't boot. To fix the problem, what should you do to start fixing the problem?

- A. Boot from your CD or DVD and select Memory Test
- B. Boot from your CD or DVD and select Rescue System
- C. Boot from your CD or DVD and select Installation - Safe Settings
- D. Boot from your CD or DVD and select Installation - ACPI Disabled
- E. Boot from your CD or DVD and select Installation - Local APIC Disabled

**Answer: B**

**QUESTION NO: 2**

On a SLED 10 workstation, how many primary partitions are you limited to per hard disk?

- A. Two
- B. Three
- C. Four
- D. Five
- E. Six

**Answer: C**

**QUESTION NO: 3**

You are looking at the partition space of your partitions on your third SCSI hard disk on your SLED 10 workstation. Which device identifies the first partition on your third SCSI hard disk?

- A. /dev/sdc1
- B. /dev/sdc2
- C. /dev/sdc3
- D. /root/sdc1
- E. /root/sdc2
- F. /root/sdc3

**Answer: A**

---

**QUESTION NO: 4**

When does a SLED session begin?

- A. When a user logs in
- B. When the computer reboots
- C. Each time the screen unlocks
- D. When a user switches desktops
- E. Every time Session Manager performs a system action

**Answer: A**

**QUESTION NO: 5**

If your Identity Vault doesn't contain the classes or attributes required by other applications, what can you do?

- A. Disable the bidirectional framework.
- B. Extend the eDirectory schema to include them.
- C. Run Identity Manager and edit the metadirectory.
- D. Run the applications and select the classes or attributes you want to share.

**Answer: B**

**QUESTION NO: 6**

How should Identity Manager's seven services be installed and configured?

- A. On a single computer
- B. Only on the Novell Audit Server
- C. With as many instances of the metadirectory engine as systems on a network
- D. One or more services per computer, but not recommended to have all seven on a single computer in a production environment

---

**Answer: D**

**QUESTION NO: 7**

You work in an organization that maintains many different levels of restricted information. When someone requests access to certain information, individuals with approval rights approve or deny the request. What Identity Manager component streamlines this process?

- A. JBoss
- B. Event Cache
- C. Novell Audit Agent
- D. Role-based entitlements
- E. The Metadirectory engine
- F. Workflow-based provisioning

**Answer: F**

**QUESTION NO: 8**

You are the architect of an identity management solution for your company. What component of Identity Manager would you use to create a big picture view of the identity management solution?

- A. Designer
- B. Provisioning Module
- C. Identity Manager Architect
- D. Novell Identity Manager User Application

**Answer: A**

**QUESTION NO: 9**

Which is a startup option for Identity Vault Driver Objects?

- A. Manual: The driver must be started through iManager.
- B. SafE. The driver starts with a driver shim to allow for troubleshooting.

- 
- C. XML: The driver allows you to directly edit the XML scripts while it is running.
  - D. Subscriber: The driver only sends events from the connected system to the Identity Vault.
  - E. Extend Schema: The driver detects classes and attributes that aren't yet in eDirectory and prompts you as to whether to extend the schema to include them.

**Answer: A**

#### **QUESTION NO: 10**

How are Identity Vault objects mapped to a connected system?

- A. Each connected system is assigned a distinguished name each time Identity Manager is launched.
- B. Each object in the Identity Vault contains an association table that maps to the connected systems.
- C. Each connected system already contains a reverse-indexed table that supplies an identifier to the Identity Vault.
- D. An association table is created if matching policies detect at least 90% of the attributes are the same on the connected system.

**Answer: B**

#### **QUESTION NO: 11**

Which statements are true? (Choose 2.)

- A. There is no evaluation period offered for OES 2.
- B. Licenses can be downloaded at <http://download.novell.com/>.
- C. All OES licenses are purchased on a user-connection basis.
- D. You are authorized to install as many OES 2 servers as you need.
- E. OES 2 licenses determine the number of OES 2 servers you can install.

**Answer: C,D**

#### **QUESTION NO: 12**

---

With nothing to download or install on the user's workstation, which OES 2 service provides the solution for simple, Internet-based access to file storage?

- A. Novell iFolder
- B. Novell eDirectory
- C. Novell NetStorage
- D. Novell Storage Services
- E. Novell Key Distribution Center

**Answer: C**

### **QUESTION NO: 13**

On a SUSE Linux Enterprise Server, where is the default location for the eDirectory database?

- A. /etc/novell/dib
- B. /opt/eDirectory/dib
- C. /var/novell/eDirectory/dib
- D. /etc/opt/novell/eDirectory/dib
- E. /var/opt/novell/eDirectory/data/dib

**Answer: E**

### **QUESTION NO: 14**

After installing OES 2 on your SUSE Linux Enterprise Server, where are the init scripts used to start and stop OES 2 services located in the server's file system?

- A. /etc/rc.d/
- B. /etc/init.d/
- C. /etc/rc.d/init.d/
- D. /etc/novell/init.d
- E. /etc/opt/novell/init.d/

**Answer: B**

---

**QUESTION NO: 15**

On a SUSE Linux Enterprise Server, which log file contains messages from running processes?

- A. /var/log/warn
- B. /var/log/boot.log
- C. /var/log/boot.msg
- D. /var/log/messages
- E. /var/opt/novell/eDirectory/log/ndsd.log

**Answer: D**

**QUESTION NO: 16**

Which shell commands can be used to unload the eDirectory daemon on a SLES 10 server?  
(Choose 2.)

- A. rcedir stop
- B. rldap stop
- C. rcndsd stop
- D. rcnovell-edir stop
- E. /etc/init.d/edir stop
- F. /etc/init.d/ldap stop
- G. /etc/init.d/ndsd stop
- H. /etc/init.d/novell-edir stop

**Answer: C,G**

**QUESTION NO: 17**

Regarding eDirectory, which is an example of a typeful fully distinguished name?

- A. .BJohnson
- B. cn=BJohnson
- C. BJohnson.SLC.da
- D. cn=BJohnson.ou=SLC.o=da
- E. .cn=BJohnson.ou=SLC.o=da

**Answer: E**

---

**QUESTION NO: 18**

Which best describes context in an eDirectory environment? (Choose 2.)

- A. The parent partition.
- B. An object's position in the tree.
- C. Your current position in the tree after logging in.
- D. An object that contains properties for other objects to inherit.
- E. The position where the server holding the master replica resides.

**Answer: B,C**

**QUESTION NO: 19**

Which are recommendations when designing the upper layer of an eDirectory tree? (Choose 2.)

- A. Create multiple tree root objects.
- B. Create multiple Organization container objects.
- C. Keep the eDirectory tree name short, descriptive and unique.
- D. Have server names represent the first-level container objects in which they reside.
- E. Create first-level organizational units that represent the physical network infrastructure.

**Answer: C,E**

**QUESTION NO: 20**

When installing OES 2 on your SUSE Linux Enterprise Server 10 system, eDirectory version 8.8 SP2 is installed. What is the maximum number of objects that can exist within a single container in your eDirectory tree?

- A. 1000
- B. 2500
- C. 10,000
- D. 15,000



---

E. 50,000

F. No limit other than those imposed by your server and network hardware.

**Answer: F**

**QUESTION NO: 21**

Which first-level organizational design is recommended for most multi-site networks?

A. Flat-tree design

B. Combination design

C. Location-based design

D. Function-based design

E. Single organization design

**Answer: C**

**QUESTION NO: 22**

Which is considered the first layer in the eDirectory tree?

A. Root

B. Country object

C. Organization object

D. Security container object

E. Organizational unit object

**Answer: C**

**QUESTION NO: 23**

Which utility is used to rename an eDirectory tree?

A. iMonitor

B. iManager

- 
- C. DSMERGE
  - D. DSREPAIR
  - E. ConsoleOne

**Answer: C**

**QUESTION NO: 24**

Which can you perform using iManager? (Choose 3.)

- A. Block inheritance
- B. Create group objects
- C. Create server objects
- D. Rename the eDirectory tree
- E. Set login time restrictions of remote users

**Answer: A,B,E**

**QUESTION NO: 25**

Which parameter in an LDIF file will cause an entry to be added as a new object in the eDirectory tree?

- A. dn: insert
- B. operation: add
- C. changetype: add
- D. objectClass: add
- E. changetype: insert

**Answer: C**

**QUESTION NO: 26**

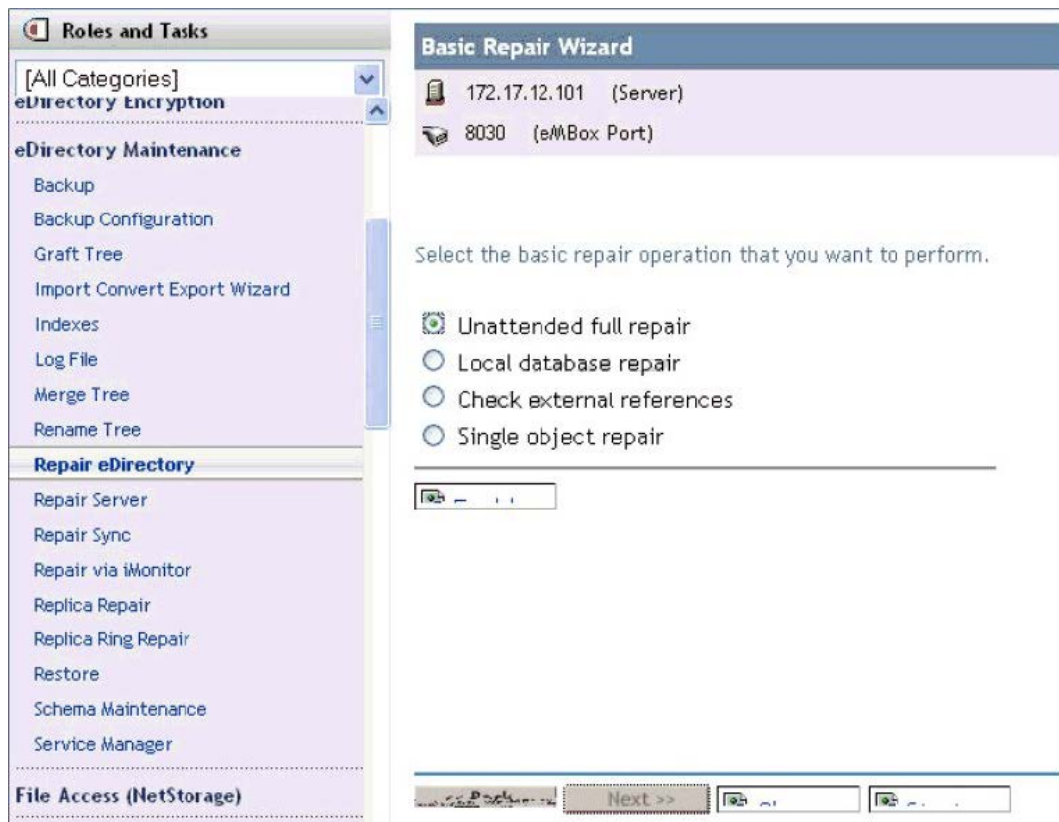
You want to import an LDIF file into your eDirectory 8.7 tree. Which utility is used to perform this import?

- A. ICE
- B. UIMPORT
- C. DSMERGE
- D. BULKLOAD
- E. DSREPAIR

**Answer: A**

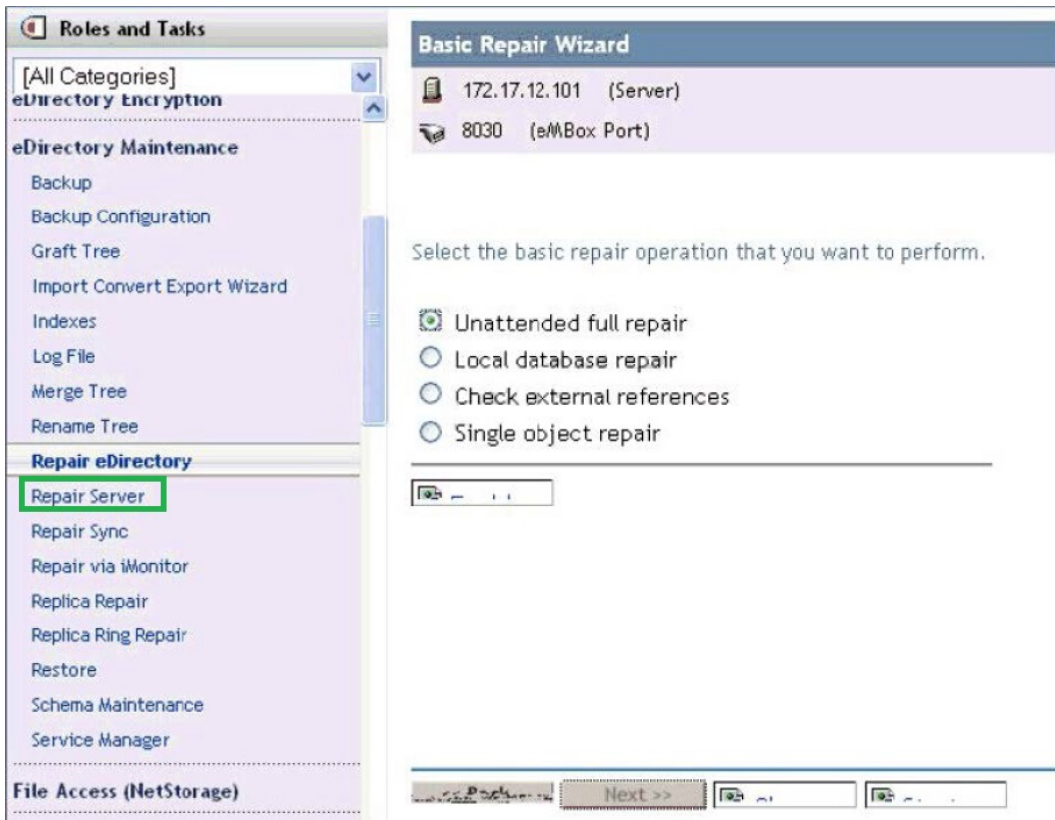
**QUESTION NO: 27 HOTSPOT**

Click the Point-and-Click button to begin.



Click on the eDirectory repair option that allows you to repair all network addresses or repair only a single server's network address.

**Answer:**



**QUESTION NO: 28**

Which will allow you to select the Rebuild Operational Schema option?

- A. Replica Ring Repair
- B. Unattended Full Repair
- C. Repair a Single Object
- D. Local Database Repair
- E. Check External References

**Answer: D**

**QUESTION NO: 29**

Which statements are true? (Choose 2.)

- A. The Admin object cannot be deleted.
- B. The Admin object is a container object.

- 
- C. The Admin object can have its security access revoked.
  - D. Other user objects can be made security equivalent to Admin.
  - E. Only one user object in the tree can have supervisory rights starting at [Root].

**Answer: C,D**

**QUESTION NO: 30**

When creating a user object, which fields are required? (Choose 3.)

- A. Context
- B. Full name
- C. Password
- D. Username
- E. Last name
- F. First name

**Answer: A,D,E**

**QUESTION NO: 31**

Which statement is true?

- A. You should disable a user object rather than delete it.
- B. If you delete a user object, you cannot recreate it using the same name.
- C. If you delete a user object and then re-create it with the same name, eDirectory rights will be preserved.
- D. If you delete a user object and then re-create it with the same name, file system rights will be preserved.
- E. If you delete a user object and then re-create it with the same name, the object must be created in a different context.

**Answer: A**

**QUESTION NO: 32**

---

Which Novell Client 2.0 for Linux shell command can be used to list active connections for the currently logged-in user?

- A. map
- B. nwmap
- C. connections
- D. nwconnections
- E. nclconnections

**Answer: D**

**QUESTION NO: 33**

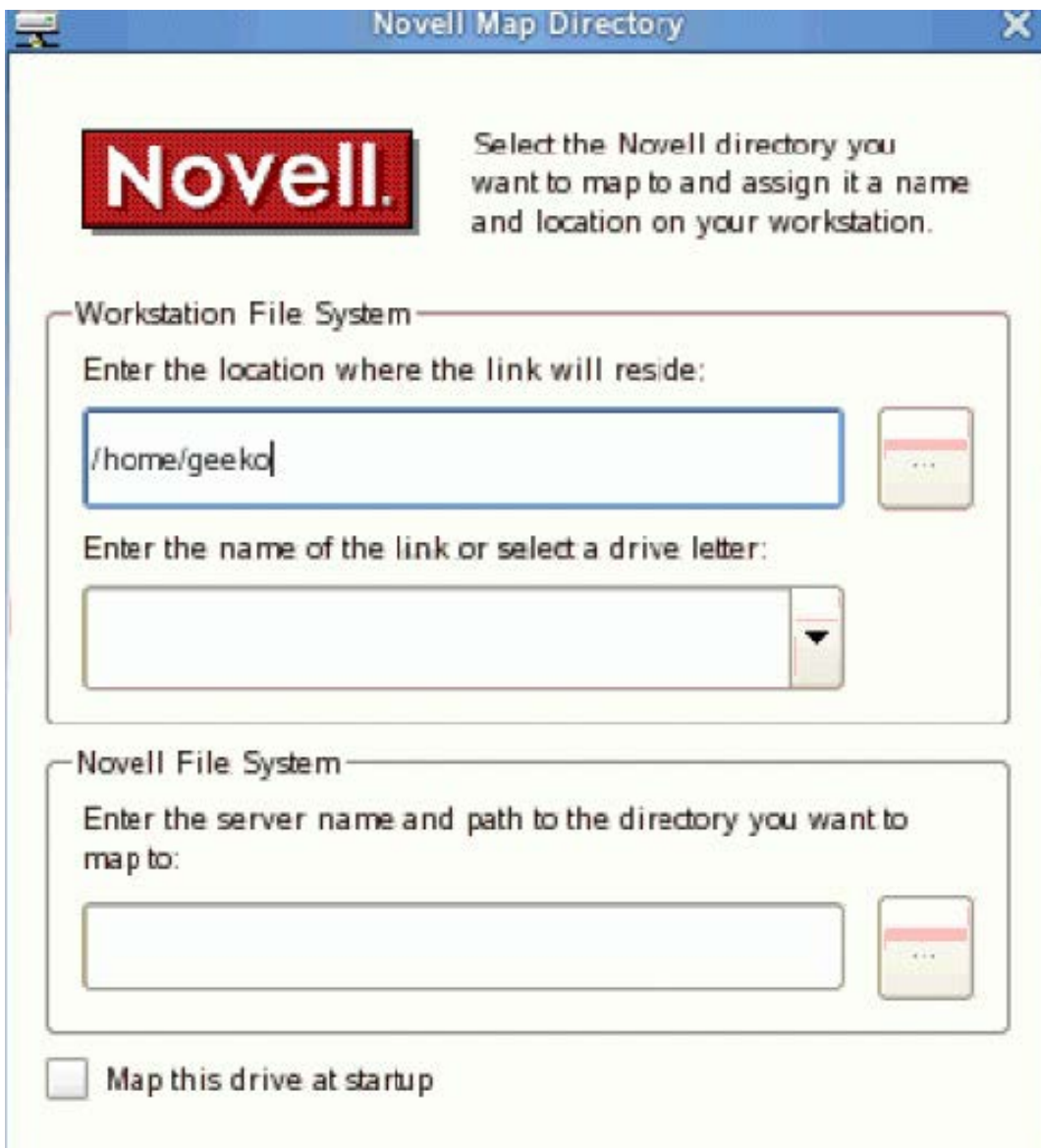
Which Novell Client 2.0 for Linux shell command can be used to load the Novell Client for Linux tray application?

- A. tray
- B. nwtray
- C. ncltray
- D. nw\_tray
- E. ncl\_tray

**Answer: E**

**QUESTION NO: 34**

Examine the Exhibit.



You are mapping a drive using the Novell Client 2.0 for Linux. What is the correct syntax to enter in the Novell File System field? (Choose 3.)

- A. //volume:
- B. //server:/path
- C. server/volume:
- D. server:volume/path
- E. server/volume:/path
- F. //server/volume/path

**Answer: C,E,F**

**QUESTION NO: 35**

To Read the [Whole Q&As](#), please purchase the [Complete Version](#) from [Our website](#).

# Trying our product !


- ★ **100%** Guaranteed Success
- ★ **100%** Money Back Guarantee
- ★ **365 Days** Free Update
- ★ **Instant Download** After Purchase
- ★ **24x7** Customer Support
- ★ Average **99.9%** Success Rate
- ★ More than **69,000** Satisfied Customers Worldwide
- ★ Multi-Platform capabilities - **Windows, Mac, Android, iPhone, iPod, iPad, Kindle**

## Need Help

Please provide as much detail as possible so we can best assist you.

To update a previously submitted ticket:



 <b>One Year Free Update</b> <p>Free update is available within One Year after your purchase. After One Year, you will get 50% discounts for updating. And we are proud to boast a 24/7 efficient Customer Support system via Email.</p>	 <b>Money Back Guarantee</b> <p>To ensure that you are spending on quality products, we provide 100% money back guarantee for 30 days from the date of purchase.</p>	 <b>Security &amp; Privacy</b> <p>We respect customer privacy. We use McAfee's security service to provide you with utmost security for your personal information &amp; peace of mind.</p>
---	---	--

[Guarantee & Policy](#) | [Privacy & Policy](#) | [Terms & Conditions](#)

Any charges made through this site will appear as Global Simulators Limited.

All trademarks are the property of their respective owners.

Copyright © 2004-2015, All Rights Reserved.