

**100%** Money Back  
**Guarantee**

**Vendor:**Cisco

**Exam Code:**010-151

**Exam Name:**Cisco Certified Technician (CCT) for  
Data Center

**Version:**Demo

**QUESTION 1**

How many 10GBASE-T port licenses are preinstalled on a Cisco Nexus 3064-32T?

- A. 16
- B. 32
- C. 48
- D. 64

Correct Answer: B

---

**QUESTION 2**

Which three components are hot swappable in a Cisco UCS Blade Server and Chassis? (Choose three.)

- A. Fabric Extender
- B. Power supply
- C. Heat sink
- D. SAS Hard Drive
- E. 2x8GB Kit DIMMs
- F. Mezzanine card

Correct Answer: ABD

---

**QUESTION 3**

Which Cisco MDS model supports the most Fibre Channel ports per chassis?

- A. MDS 9513
- B. MDS 9509
- C. MDS 9506
- D. MDS 9250i

Correct Answer: A

---

**QUESTION 4**

Which important feature on the front end is provided to the clients by multiple servers that access the same storage

devices across the SAN?

- A. recovery
- B. redundancy
- C. resiliency
- D. security
- E. storage

Correct Answer: B

---

#### **QUESTION 5**

How do you find the serial number of a Cisco UCS 5108 Blade Server chassis?

- A. Use the Cisco UCS Admin.
- B. Use the Cisco UCS Application.
- C. Use the Cisco UCS Assistant.
- D. Use the Cisco UCS Manager.

Correct Answer: D

---

#### **QUESTION 6**

What is the correct path to verify the Overall Status of Chassis 1 | Server 3?

- A. Equipment Tab > Chassis > Chassis 1 > Servers > Server 3 Status tab
- B. Equipment Tab > Chassis > Chassis 1 > Servers > Server 3 General tab
- C. Equipment Tab > Chassis > Chassis 1 > Servers > Server 3 FSM tab
- D. Servers Tab > Chassis > Server 3 General tab
- E. Status Tab > Chassis > Chassis 1 > Servers > Server 3
- F. Admin Tab > Chassis > Chassis 1 > Servers > Server 3 General tab

Correct Answer: B

---

#### **QUESTION 7**

Which type of optics module is supported by a 6-port 40 GE Cisco Nexus 7000 M2 Series I/O module?

- A. CPAK

- B. QSFP+
- C. SFP/SFP+
- D. CFP

Correct Answer: B

---

#### **QUESTION 8**

Which five things should the administrator verify after performing maintenance or replacing a blade server? (Choose five.)

- A. blade server status
- B. hard drive status
- C. host OS boot status
- D. CPU status
- E. mezzanine card status
- F. memory DIMM status
- G. fan and power status

Correct Answer:

---

#### **QUESTION 9**

Which fiber optic cable type is used most often with a Subscriber connector?

- A. dual-mode
- B. single-mode
- C. straight-mode
- D. multi-mode
- E. subscriber-mode

Correct Answer: B

---

#### **QUESTION 10**

When a host firmware package policy is created, what must it be associated with to upgrade the BIOS?

- A. blade or blade pool

- B. service profile
- C. boot policy
- D. service template

Correct Answer: B

**QUESTION 11**

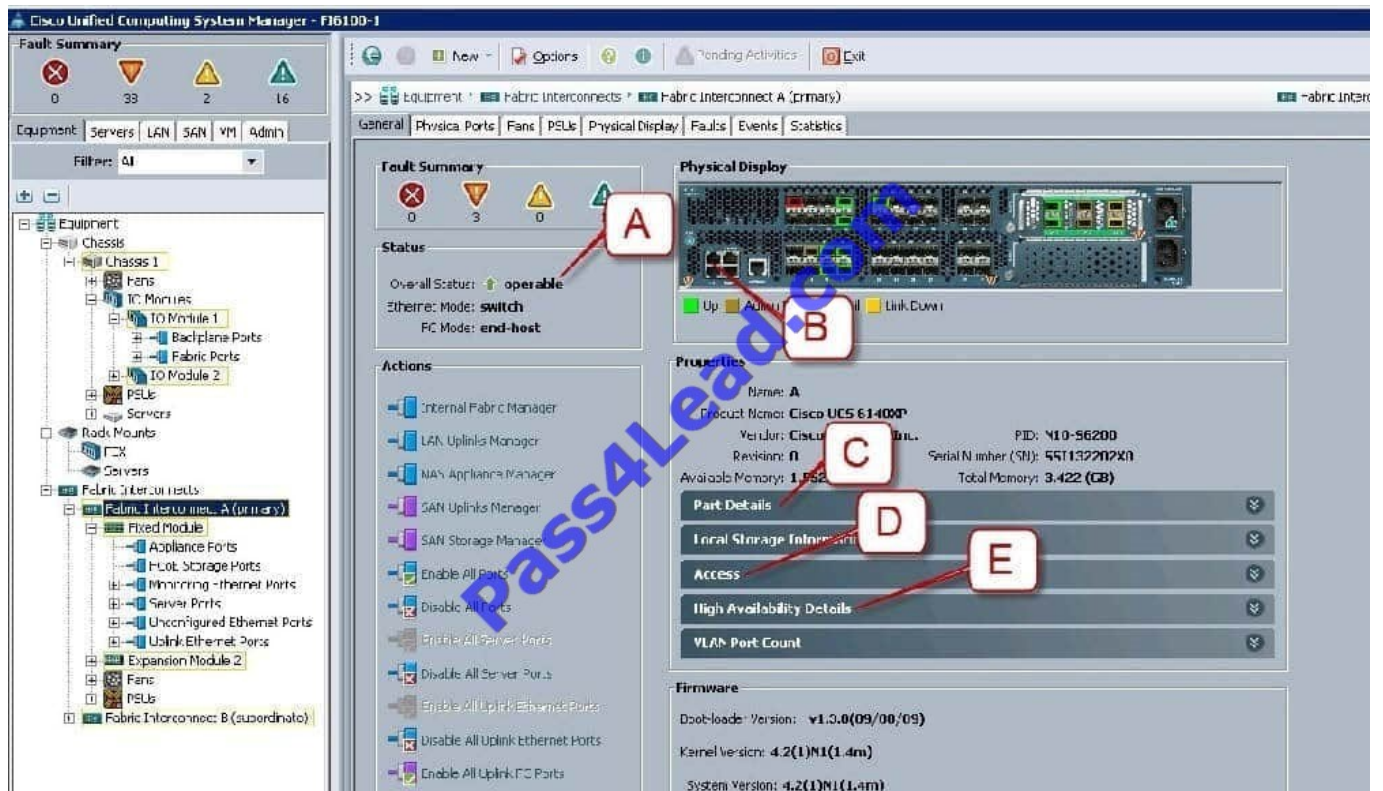
What is the maximum distance that the 40GBASE-LR4 Ethernet standard can span?

- A. 550 m
- B. 10 km
- C. 40 km
- D. 80 km

Correct Answer: B

**QUESTION 12**

Refer to the exhibit.



Where is the best place to see whether the system is ready for a Fabric Interconnect failover?

- A. A - Overall Status operable
- B. B - L1 Connection
- C. C - Part Details
- D. D - Access
- E. E - High Availability Details

Correct Answer: E

---

### QUESTION 13

After installation or replacement of a Cisco UCS C-Series Rack-Mount Server, the host does not boot. Which four options should be verified? (Choose four.)

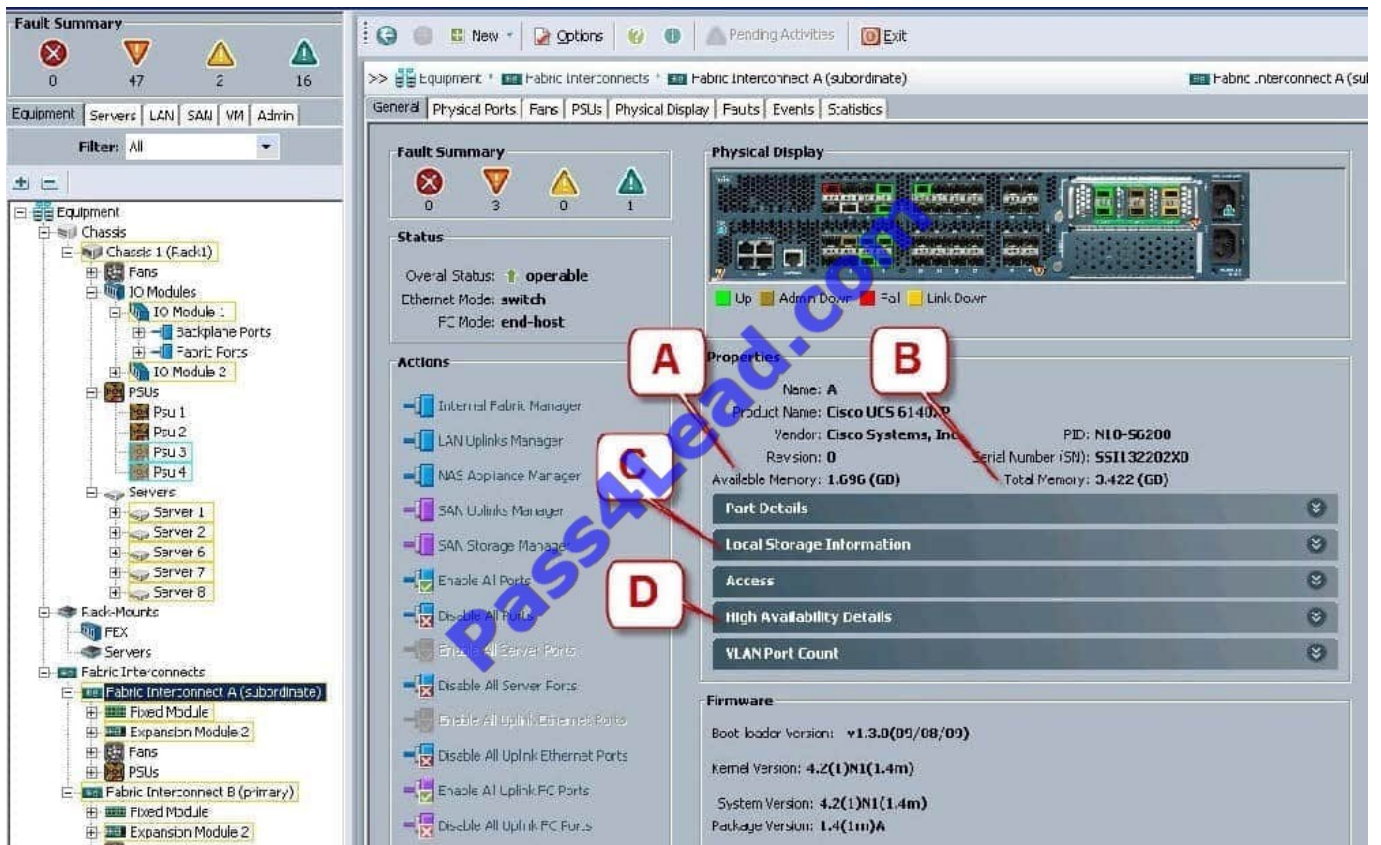
- A. Verify the power source to the equipment.
- B. Check for loose HDD cables.
- C. Reseat the DIMMs, CPU, and PCI cards.
- D. Verify that power supplies are receiving power.
- E. Reseat the mezzanine card connector.
- F. Check the CPU sockets for bent pins.
- G. Check the Cisco IMC for fan faults.

Correct Answer: ACDF

---

### QUESTION 14

Refer to the exhibit.



Where is the best place to see bootflash free space?

- A. A - Available Memory
- B. B - Total Memory
- C. C - Local Storage Information
- D. D - High Availability Details

Correct Answer: C

### QUESTION 15

Which three steps do you perform to troubleshoot when a rack server powers on with no video? (Choose three.)

- A. Check that the front I/O dangle is properly seated.
- B. Check the front I/O cable connection to the motherboard.
- C. Check for memory subsystem failure.
- D. Verify the power source to equipment.
- E. Reseat the DIMMs, CPU, and PCI cards.

Correct Answer: ABC

---

**QUESTION 16**

Which two statements about PCIe are true? (Choose two.)

- A. The PCIe link is built around dedicated unidirectional couples of serial, point-to-point connections known as lanes.
- B. You can install a PCI Express x8 adapter into an x4 slot.
- C. The PCIe standard is a bus-based system in which all the devices share the same bidirectional, 32-bit or 64-bit, parallel signal path.
- D. The PCIe 1.0 standard doubles the transfer rate compared to PCIe 2.0.
- E. A link that is composed of four lanes is called an x4 link.

Correct Answer: AE

---

**QUESTION 17**

Which three firmware components does the Host Upgrade Utility upgrade? (Choose three.)

- A. Fabric Interconnect firmware
- B. LAN on Motherboard
- C. Cisco UCS Manager
- D. CIMC
- E. System BIOS

Correct Answer: BDE

---

**QUESTION 18**

Which tool does a network administrator not need when installing hardware?

- A. cable tester
- B. wrench set
- C. cable wraps
- D. needle-nose pliers
- E. PCMCIA memory
- F. soldering iron with grounded tip

Correct Answer: F

---



**QUESTION 19**

Which three statements about FCoE are true? (Choose three.)

- A. Allows Fibre Channel and Ethernet networks to share a single, integrated infrastructure.
- B. Encapsulates Fibre Channel frames into Ethernet frames, which allows them to run alongside traditional IP traffic.
- C. Increases capital costs due to the difficulty to manage.
- D. Consolidates I/O traffic in the data center.

Correct Answer: ABD

---

**QUESTION 20**

Which action should the administrator take before physically removing a blade server for maintenance or replacement?

- A. Force the server to shut down.
- B. Disassociate the service profile.
- C. Decommission the server.
- D. Perform a graceful shutdown of the server.

Correct Answer: C

To Read the [Whole Q&As](#), please purchase the [Complete Version](#) from [Our website](#).

## Try our product !

**100%** Guaranteed Success

**100%** Money Back Guarantee

**365** Days Free Update

**Instant Download** After Purchase

**24x7** Customer Support

Average **99.9%** Success Rate

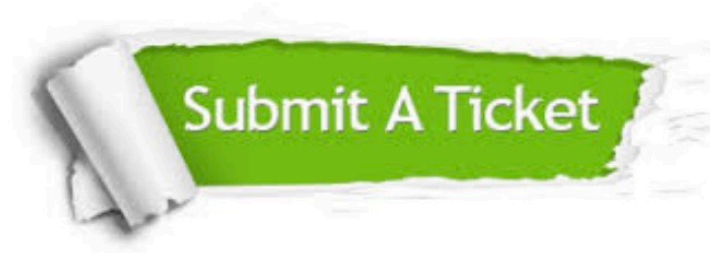
More than **800,000** Satisfied Customers Worldwide

Multi-Platform capabilities - **Windows, Mac, Android, iPhone, iPod, iPad, Kindle**

## Need Help

Please provide as much detail as possible so we can best assist you.

To update a previously submitted ticket:



 <p><b>One Year Free Update</b> Free update is available within One Year after your purchase. After One Year, you will get 50% discounts for updating. And we are proud to boast a 24/7 efficient Customer Support system via Email.</p>	 <p><b>Money Back Guarantee</b> To ensure that you are spending on quality products, we provide 100% money back guarantee for 30 days from the date of purchase.</p>	 <p><b>Security &amp; Privacy</b> We respect customer privacy. We use McAfee's security service to provide you with utmost security for your personal information &amp; peace of mind.</p>
---	---	--

Any charges made through this site will appear as Global Simulators Limited.

All trademarks are the property of their respective owners.